



THE GLASS HOUSE™

AT COCONUT PALM

OFFICE SPACE FOR LEASE

3804 Coconut Palm Drive | Tampa, FL 33619



CBRE

PROPERTY SUMMARY



PROPERTY HIGHLIGHTS

- Two-story office building totaling 40,688 SF
- Building signage available with visibility from E MLK Jr Boulevard and an average of 18,596 cars per day
- Above market parking ratio of 7.0/1,000 SF
- Easy access to E MLK Jr Boulevard, Interstate 75, Interstate 4, and U.S. Highway 301
- 15 minutes to Downtown Tampa

SPACE AVAILABLE

FLOOR	SUITE	RSF
Partial 1st	100	2,500 - 10,314*
Partial 1st	150	7,297
Partial 2nd	200	6,345

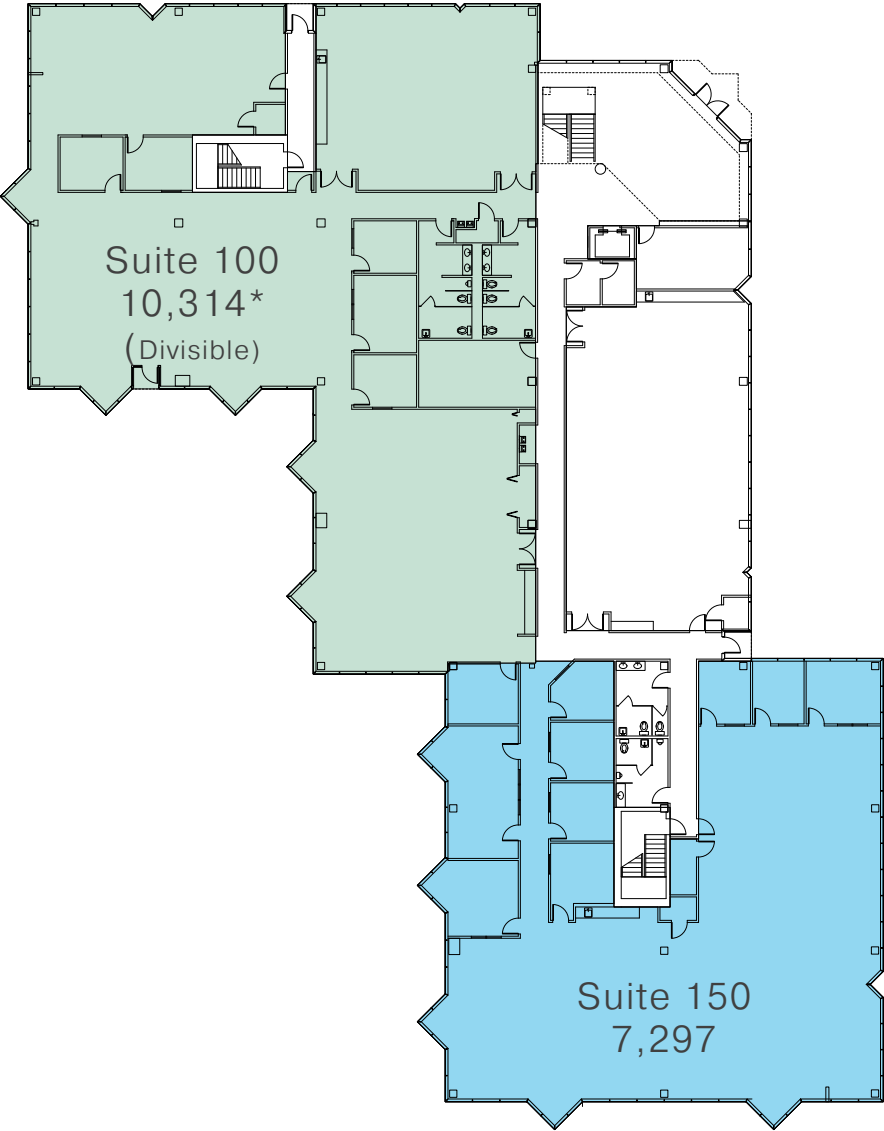
* Divisible



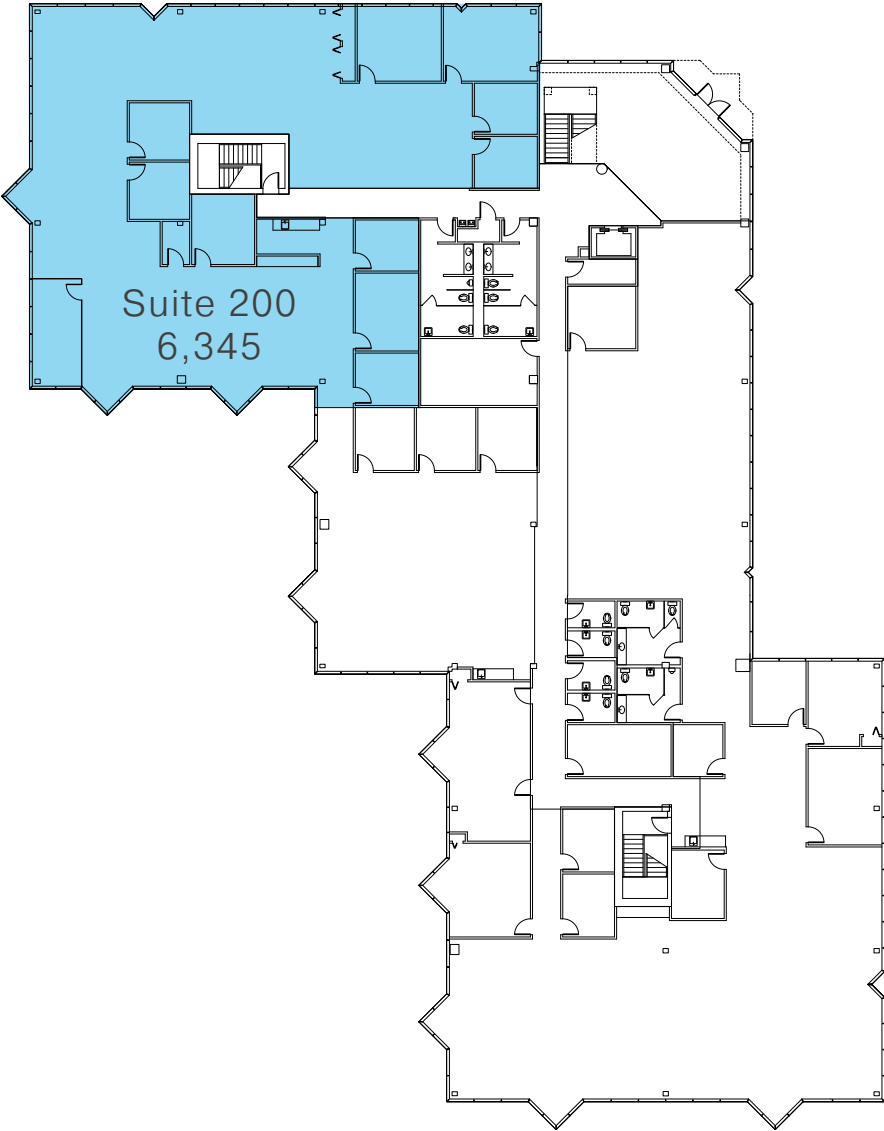
3804 COCONUT PALM DRIVE | TAMPA, FL

FLOOR PLANS

1ST FLOOR



2ND FLOOR



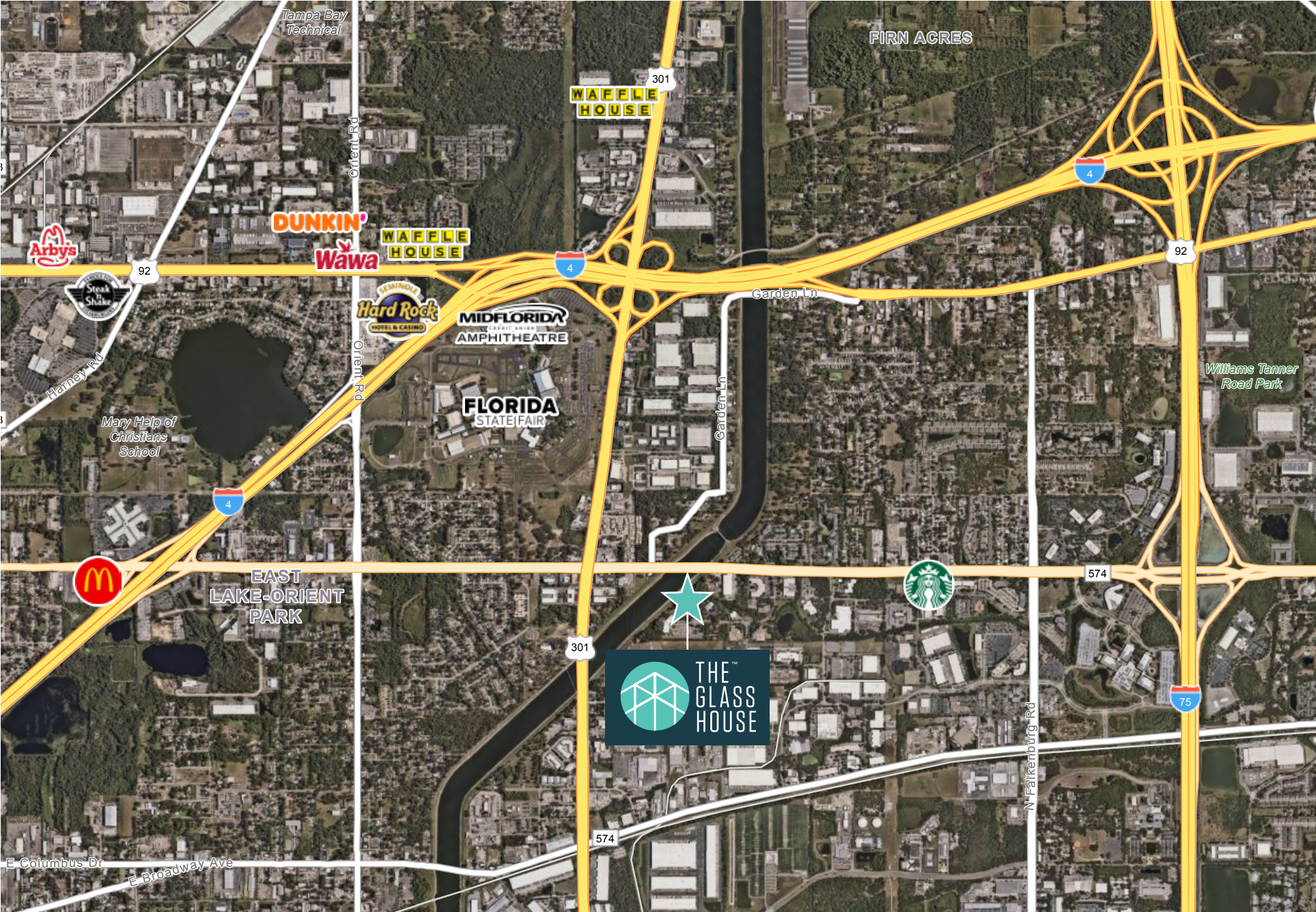
LOBBY PHOTOS



SUITE 200 PHOTOS - 6,345 SF



AERIAL MAP



CONTACT US

KYLE CHAIKIN

First Vice President

+1 813 273 8433

kyle.chaikin@cbre.com

NICOLE GRZYWACZ

Associate

+1 813 273 8445

nicole.grzywacz@cbre.com



CBRE

111 W Oak Avenue | Suite 100

Tampa, FL 33602

T +1 813 273 8400

www.cbre.com/tampa

CBRE © 2026 All Rights Reserved. All information included in this letter/proposal pertaining to CBRE, Inc.—including but not limited to its operations, employees, technology and clients—is proprietary and confidential and supplied with the understanding that such information will be held in confidence and not disclosed to any third party without CBRE’s prior written consent. This letter/proposal is intended solely as a preliminary expression of general intentions, is for discussion purposes only, and does not create any agreement or obligation by CBRE to negotiate or continue negotiations. CBRE shall have no contractual obligation with respect to the matters referred to herein unless and until a definitive, fully-executed agreement has been delivered by the parties. Prior to delivery of a definitive executed agreement, and without any liability to the other party, either party may (1) propose different terms from those summarized herein, (2) enter into negotiations with other parties and/or (3) unilaterally terminate all negotiations with the other party hereto. CBRE and the CBRE logo are service marks of CBRE, Inc. All other marks displayed on this document are the property of their respective owners, and the use of such logos does not imply any affiliation with or endorsement of CBRE.