

AVAILABLE FOR LEASE

850 DAVISVILLE ROAD
WILLOW GROVE, PENNSYLVANIA



3,717± SF UNIT FOR LEASE

WAREHOUSE SPACE W/ DRIVE-IN



**LOCATED JUST
OFF PA TPK
INTERCHANGE**

CONTACT

SCOTT MERTZ, SIOR

+1 609 413 5647

scott.mertz@naimertz.com

NAIMertz

CURRENT AVAILABILITIES

850 DAVISVILLE ROAD WILLOW GROVE, PA



SPACE AVAIL

3,717± SF
DIVISIBLE



CEILING
HEIGHT

18'6"
CLEAR



LOADING

1
DRIVE-IN

	SF	CEILING HEIGHT	LOADING	OFFICE AREA
UNIT 4	3,717	18'6"	1 DI	-



OUTSIDE STORAGE AVAILABLE

CONTACT

SCOTT MERTZ, SIOR

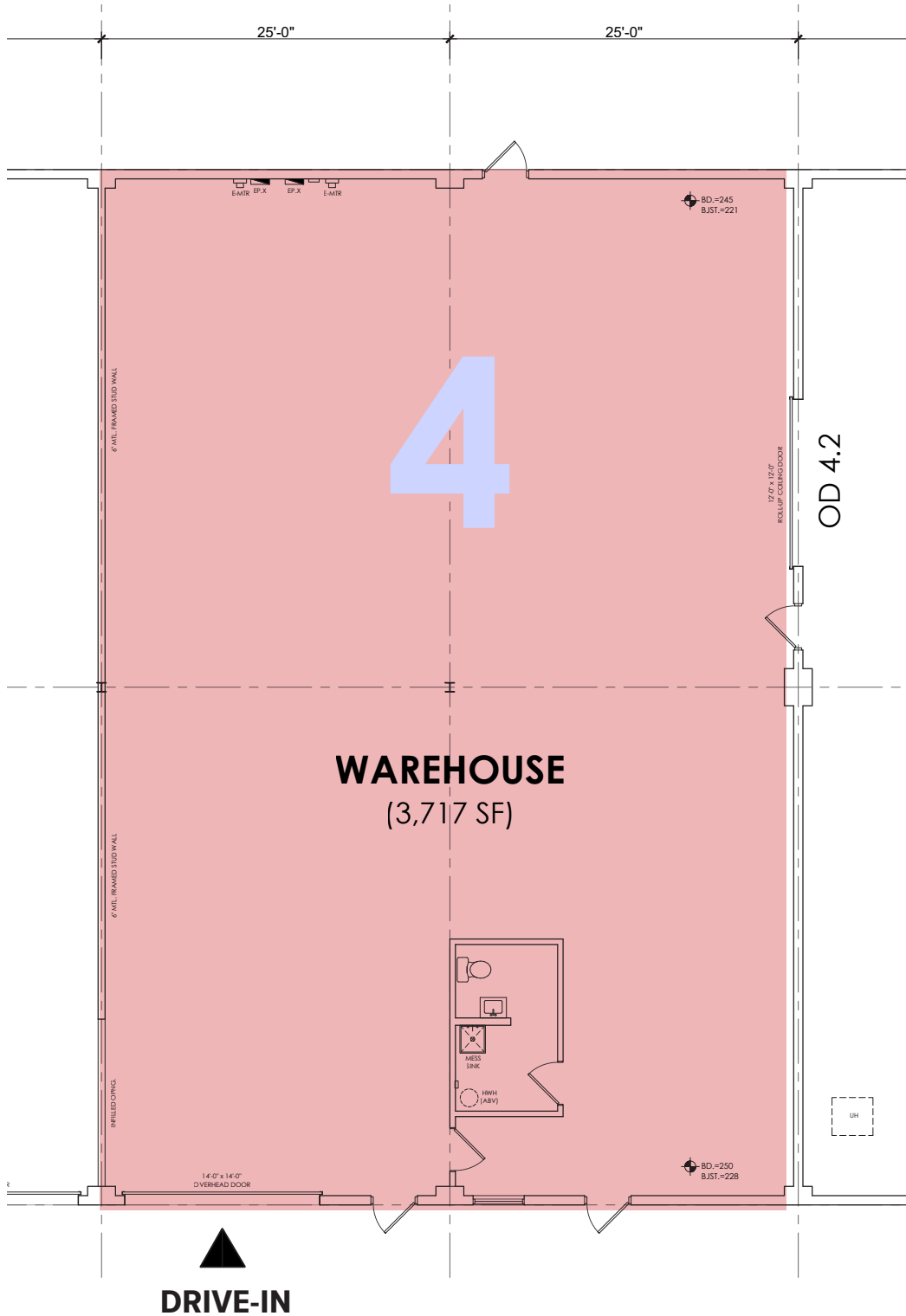
+1 609 413 5647

scott.mertz@naimertz.com



FLOORPLAN

850 DAVISVILLE ROAD WILLOW GROVE, PA



CONTACT

SCOTT MERTZ, SIOR

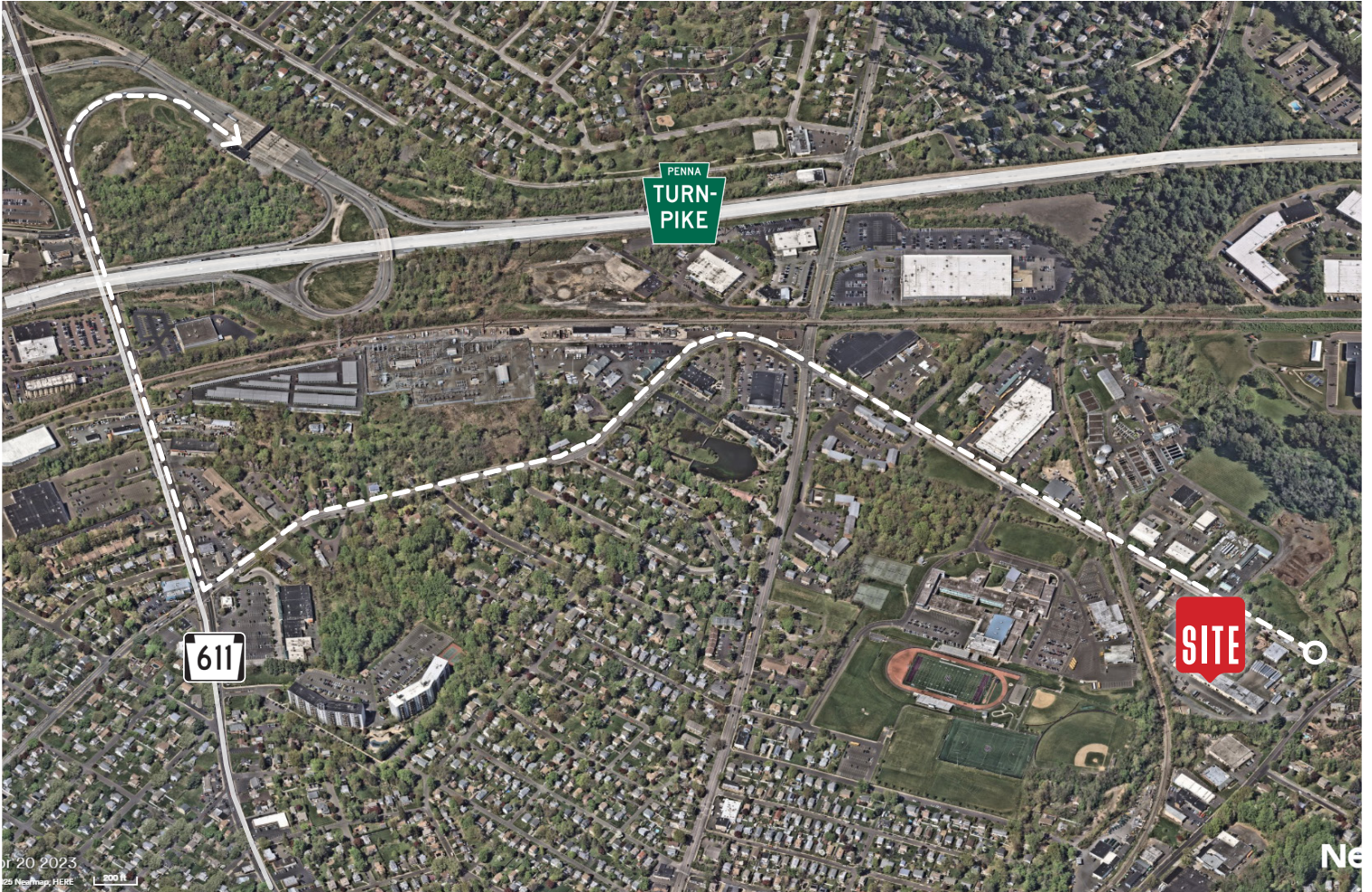
+1 609 413 5647

scott.mertz@naimertz.com

Naimertz

LOCATION INFORMATION

850 DAVISVILLE ROAD WILLOW GROVE, PA



DISTANCE TO:

Easton Road (Route 611)	1.4 mi	Route 1	11.5 mi
PA Turnpike / I-276	2.0 mi	I-95	15.0 mi
Route 309	7.0 mi	Center City Philadelphia	22.0 mi
PA Tpk NE Extension / I-476	11.4 mi	NJ Turnpike	24.3 mi

CONTACT

SCOTT MERTZ, SIOR

+1 609 413 5647

scott.mertz@naimertz.com

