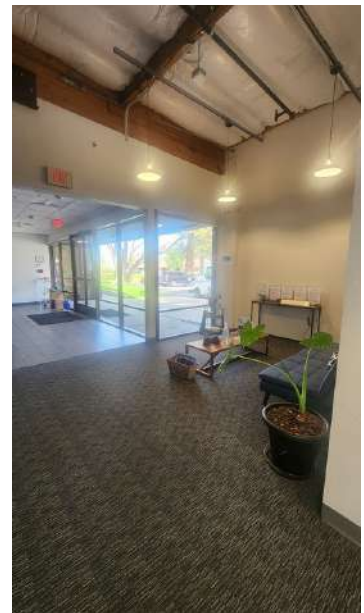


FOR SUBLEASE
495 Mercury Dr. Sunnyvale, CA
Flexible Sizes Available up to 20,480 SF
LED 7/31/2027 | Asking \$1.00 NNN



Property Highlights

- Recent renovations to interior and exterior
- Office and R&D use
- 1800 Amps @ 208 Volts
- OpEx approximately \$0.42/SF to Gross
- Open ceilings
- Walking distance to retail, dining and more!
- 3.5 / 1,000 parking ratio
- Up to 20,480 SF as needed (demisable)
- Easy access to Hwy 101 and Lawrence Expy



5201 Great America Pkwy, Suite 455
Santa Clara, California 95054
Main +1 408 656 7683 | Fax +1 408 350 8369
www.s5cre.com

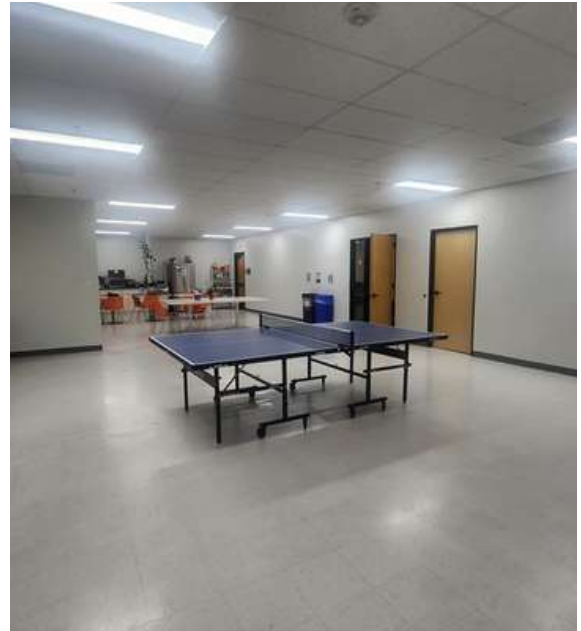
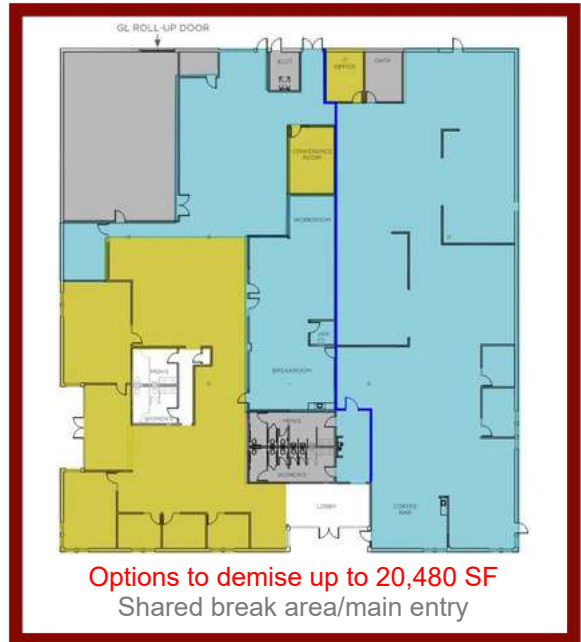
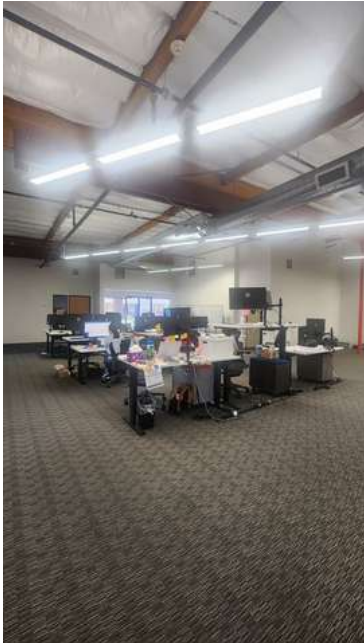
Yogi Chugh
+1 510 209 0317
yogi@s5cre.com
Lic #01735699

Shelley Sakhuja
+1 408 917 8405
shelley@s5cre.com
Lic #02166704

Nathan Rodriguez
+1 559-707-3265
nathan@s5cre.com
Lic #02214957

S5 Advisory Copyright 2022. The information contained herein was lawfully obtained from sources we consider reliable. S5 Advisory is not responsible and expressly disclaims all liability, for errors, commissions, prior sales, withdrawal from market or change in price. Seller (or Lessor, as the case may be) and broker make no representation as to the environmental condition of the property and recommend Purchaser's (or Lessee's) independent investigation.

FOR SUBLEASE
495 Mercury Dr. Sunnyvale, CA
 Flexible Sizes Available up to 20,480 SF
 LED 7/31/2027 | Asking \$1.00 NNN



Yogi Chugh
 +1 510 209 0317
 yogi@s5cre.com
 Lic #01735699

Shelley Sakhuja
 +1 408 917 8405
 shelley@s5cre.com
 Lic #02166704

Nathan Rodriguez
 +1 559-707-3265
 nathan@s5cre.com
 Lic #02214957

5201 Great America Pkwy, Suite 455
 Santa Clara, California 95054
 Main +1 408 656 7683 | Fax +1 408 350 8369
 www.s5cre.com

S5 Advisory Copyright 2022. The information contained herein was lawfully obtained from sources we consider reliable. S5 Advisory is not responsible and expressly disclaims all liability, for errors, commissions, prior sales, withdrawal from market or change in price. Seller (or Lessor, as the case may be) and broker make no representation as to the environmental condition of the property and recommend Purchaser's (or Lessee's) independent investigation.