

**1792 TRIBUTE RD
SACRAMENTO, CA**

FOR LEASE

1,373 RSF - 9,880 RSF

OFFICE AND MEDICAL SUITES AVAILABLE

ETHAN CONRAD
PROPERTIES INC.

BERMAN SKIN INSTITUTE

1792

MAJOR REMODEL COMPLETE

VIEW VIRTUAL TOUR

FOR MORE INFORMATION CONTACT:

Sandy Rodriguez

DRE: #01249030

sarodriguez@ethanconradprop.com

Todd Newburn

DRE: #01226238

tnewburn@ethanconradprop.com

916.779.1000

ETHAN CONRAD PROPERTIES, INC
1300 NATIONAL DRIVE, SUITE 100 | SACRAMENTO CA, 95834 | 916.779.1000
www.ethanconradprop.com

FEATURES:

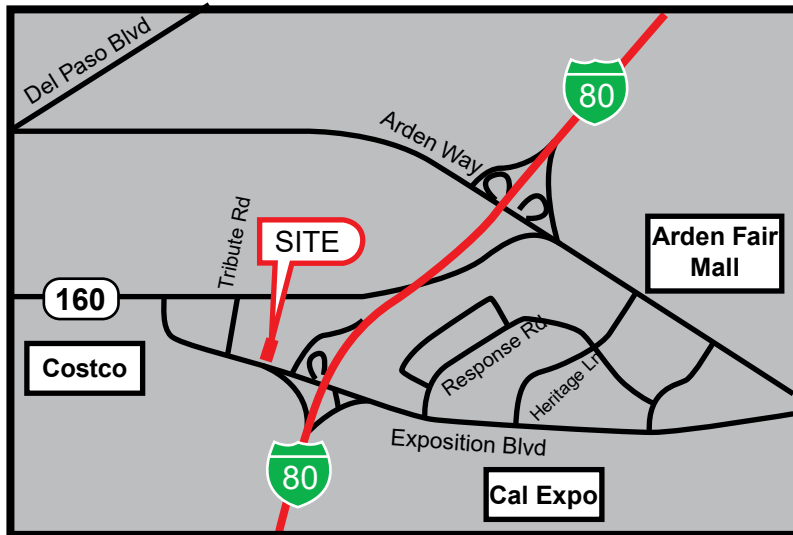
- Four-story ±45,000 RSF Class-A Office
- Building signage available
- Immediate access to Business 80 at Exposition Blvd
- Parking ratio 4:1,000 SF
- 1st floor covered garage with 25 stalls
- Walking distance to Marriott Hotels
- Numerous retail and dining amenities nearby
- Rapid access to Downtown Sacramento

PROPERTY DETAILS:

Proximate to Capitol City Freeway, Business 80, and Arden Fair Mall. Move in ready suite with flexible and efficient layout. Building top signage available.

Adjacent to CalExpo and walking distance to Costco.

Suite 300 has 50 modern cubicles, chairs, and file cabinets available. Full access to ground floor showers and lockers.



LEASE RATES:

Suite 300:	9,880 RSF	\$1.75 PSF, Full Service	VIEW VIRTUAL TOUR
Suite 470:	1,373 RSF	\$1.85 PSF, Full Service	

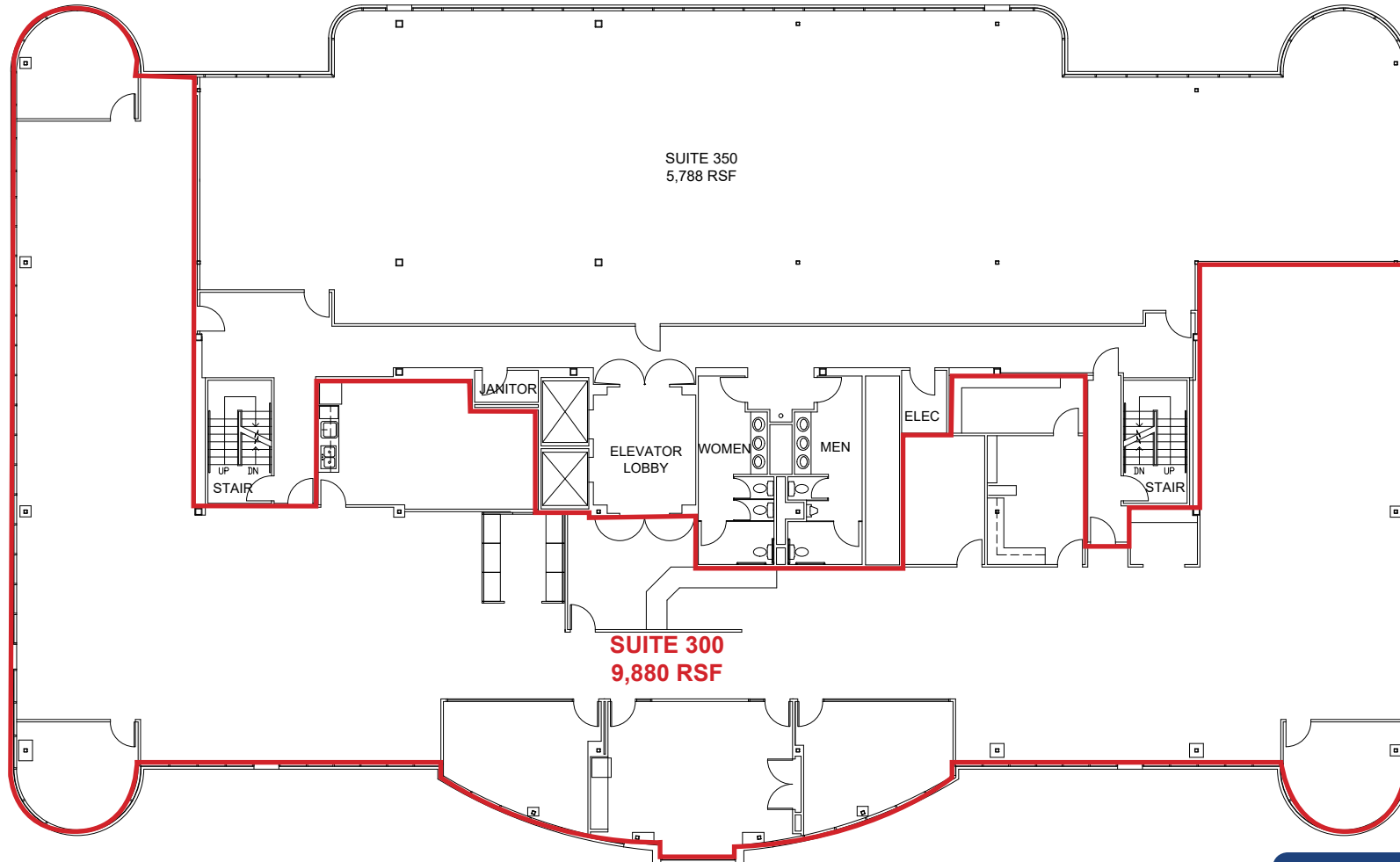
ETHAN CONRAD PROPERTIES, INC.

1300 NATIONAL DRIVE, SUITE 100 | SACRAMENTO CA, 95834 | 916.779.1000

www.ethanconradprop.com

The information contained herein has been obtained from sources we believe to be reliable. However, we cannot guarantee, warrant or represent its accuracy and all information is subject to error, change or withdrawal. An interested party and their advisors should conduct an independent investigation of the property to determine to your satisfaction the suitability of the property for your needs.

3RD FLOOR



[VIEW VIRTUAL TOUR](#)

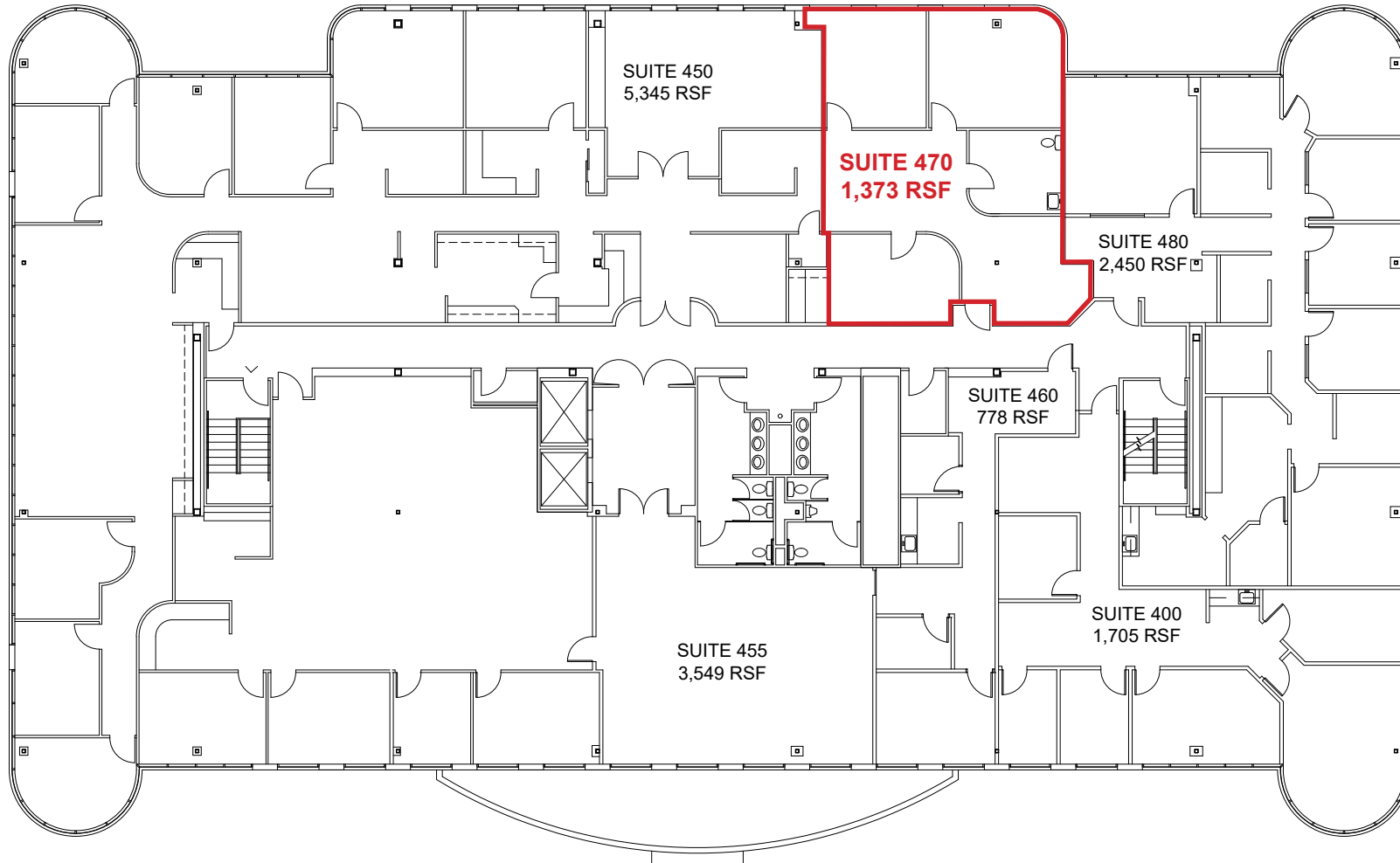
ETHAN CONRAD PROPERTIES, INC.

1300 NATIONAL DRIVE, SUITE 100 | SACRAMENTO CA, 95834 | 916.779.1000

www.ethanconradprop.com

The information contained herein has been obtained from sources we believe to be reliable. However, we cannot guarantee, warrant or represent its accuracy and all information is subject to error, change or withdrawal. An interested party and their advisors should conduct an independent investigation of the property to determine to your satisfaction the suitability of the property for your needs.

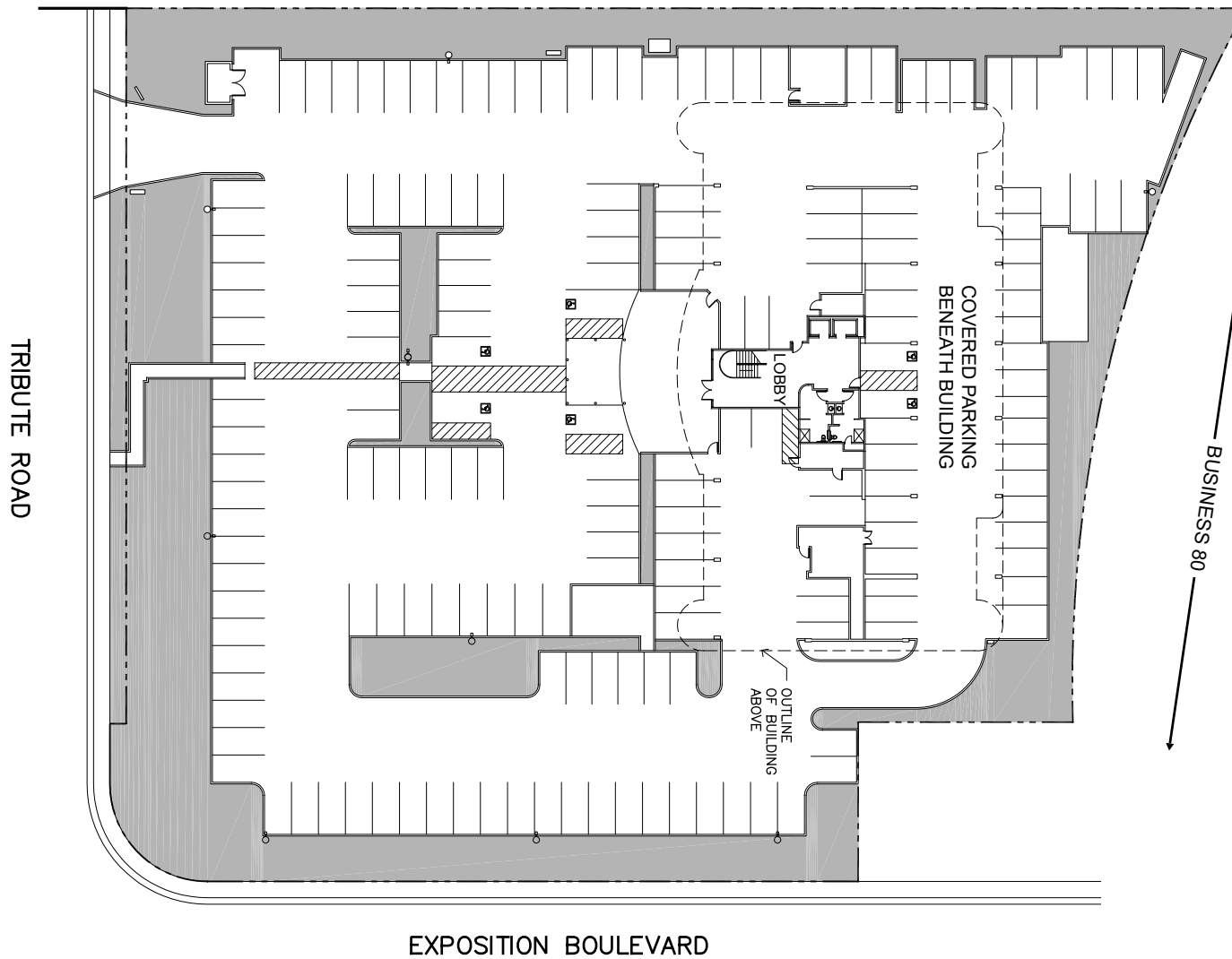
4TH FLOOR



ETHAN CONRAD PROPERTIES, INC.
1300 NATIONAL DRIVE, SUITE 100 | SACRAMENTO CA, 95834 | 916.779.1000
www.ethanconradprop.com

The information contained herein has been obtained from sources we believe to be reliable. However, we cannot guarantee, warrant or represent its accuracy and all information is subject to error, change or withdrawal. An interested party and their advisors should conduct an independent investigation of the property to determine to your satisfaction the suitability of the property for your needs.

SITE PLAN



The information contained herein has been obtained from sources we believe to be reliable. However, we cannot guarantee, warrant or represent its accuracy and all information is subject to error, change or withdrawal. An interested party and their advisors should conduct an independent investigation of the property to determine to your satisfaction the suitability of the property for your needs.

ETHAN CONRAD PROPERTIES, INC.

1300 NATIONAL DRIVE, SUITE 100 | SACRAMENTO CA, 95834 | 916.779.1000

www.ethanconradprop.com



The information contained herein has been obtained from sources we believe to be reliable. However, we cannot guarantee, warrant or represent its accuracy and all information is subject to error, change or withdrawal. An interested party and their advisors should conduct an independent investigation of the property to determine to your satisfaction the suitability of the property for your needs.

ETHAN CONRAD PROPERTIES, INC.

1300 NATIONAL DRIVE, SUITE 100 | SACRAMENTO CA, 95834 | 916.779.1000

www.ethanconradprop.com