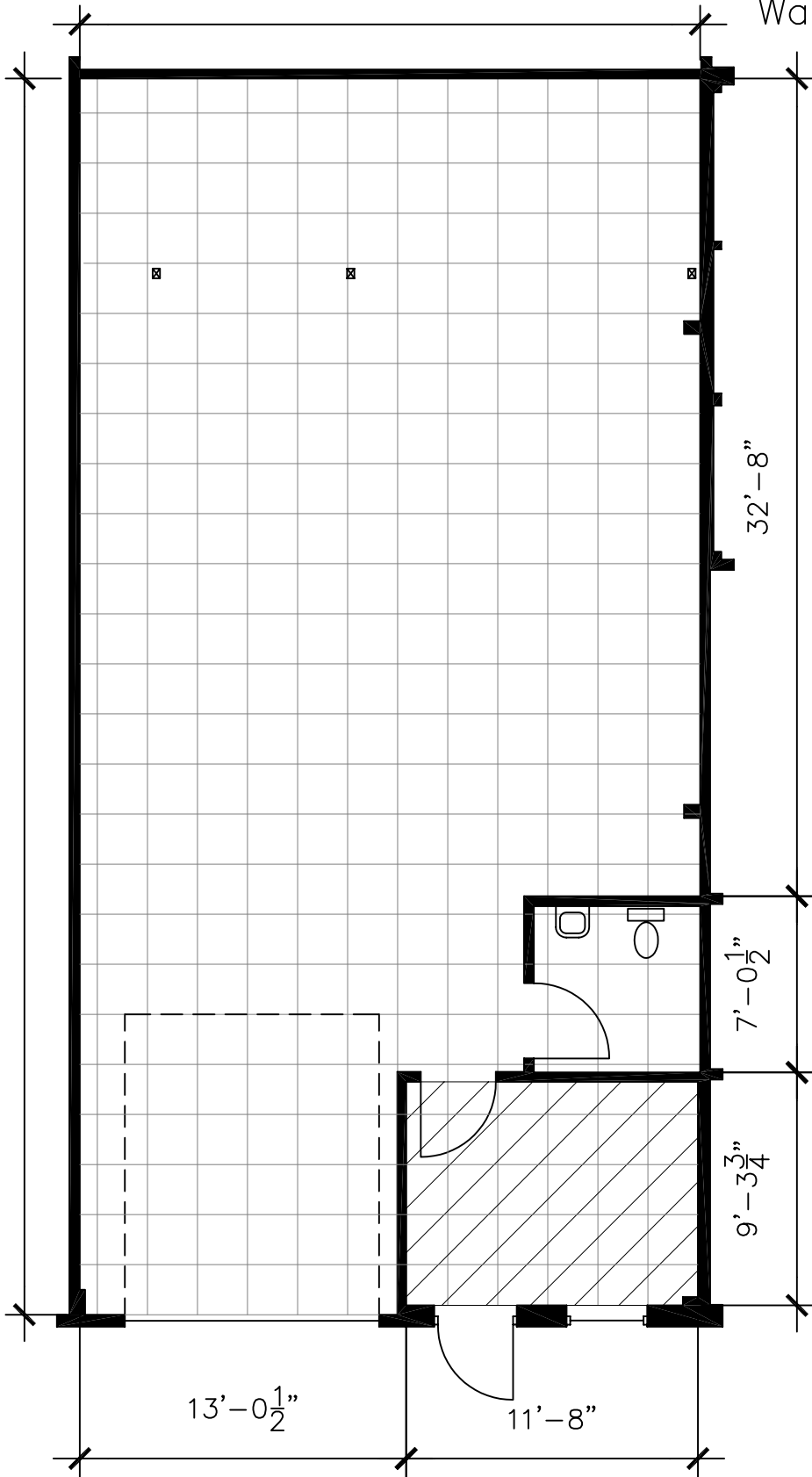


24'-9 1/2"

Office SF = 105
Warehouse SF = 1,156
Total RSF = 1,261

49'-4 1/2"

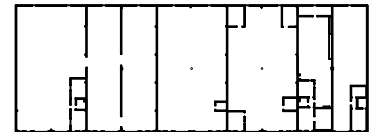


NOTE:

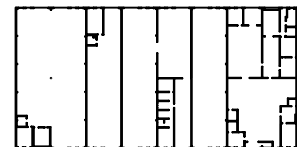
Overlying grid is 2' x 2'
Not to scale.

 Air Conditioned Area

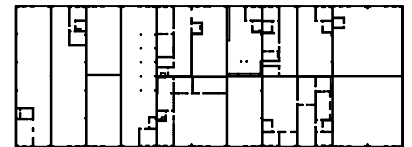
Building 5



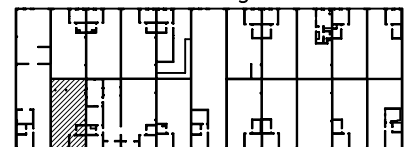
Building 4



Building 3



Building 2



W. Powell Ln. ↑

PARK LAYOUT

Drawing for:

L.H. LAYNE COMPANY
404 W. Powell, Ste. 202
Austin, Texas 78753
Ph: 252-9900 Fax: 252-9902

SUITE 210
AUSTECH BUSINESS PARK
501 W. POWELL LN.
RENTABLE AREA: 1,261 S.F.

THE MEASUREMENTS AND FLOOR PLANS ARE ACCURATE TO WITHIN 2% INTERIOR WALLS AND DEMISING WALLS ARE ASSUMED TO BE 5" THICK.

Project No.: 20306.01
Date: April 15, 2003

©2003

† DIMENSIONS †
FLOOR PLANS

4412 Spicewood Spgs. Rd., Ste 803
Austin, Texas 78759
Ph: 342-0114 Fax: 342-1965