

AIR-CONDITIONED WAREHOUSE

For Lease

Powerline Park

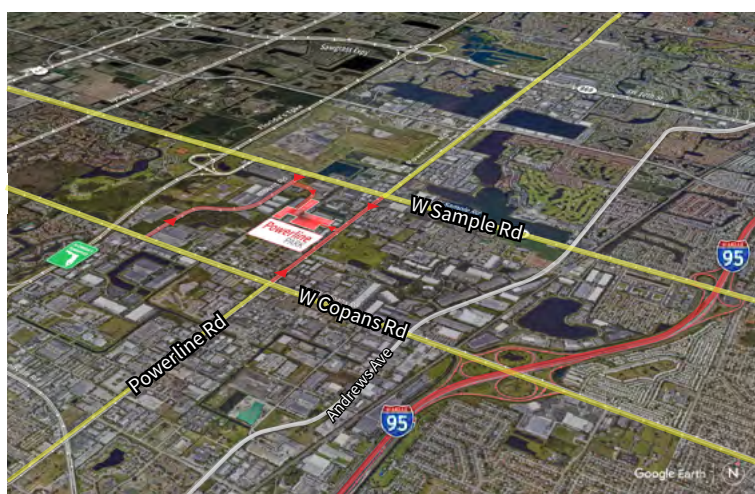
3000-11 NW 25th Avenue
Pompano Beach, FL 33069



Industrial Space For Lease
3,498 SF

Powerline Park

3000-11 NW 25th Avenue, Pompano Beach, FL 33069



Location

- Easy access off Sample Road and Powerline Road
- Excellent access to I-95 and the Florida Turnpike
- Equidistant to Fort Lauderdale/Hollywood International Airport and Palm Beach International Airport

Space Features

- 3,498 SF total
- 857 SF of office
- 2,641 SF of warehouse
- 20' clear height
- One (1) grade level door
- Air-conditioned warehouse
- Parking ratio: 2.0/1,000 sf

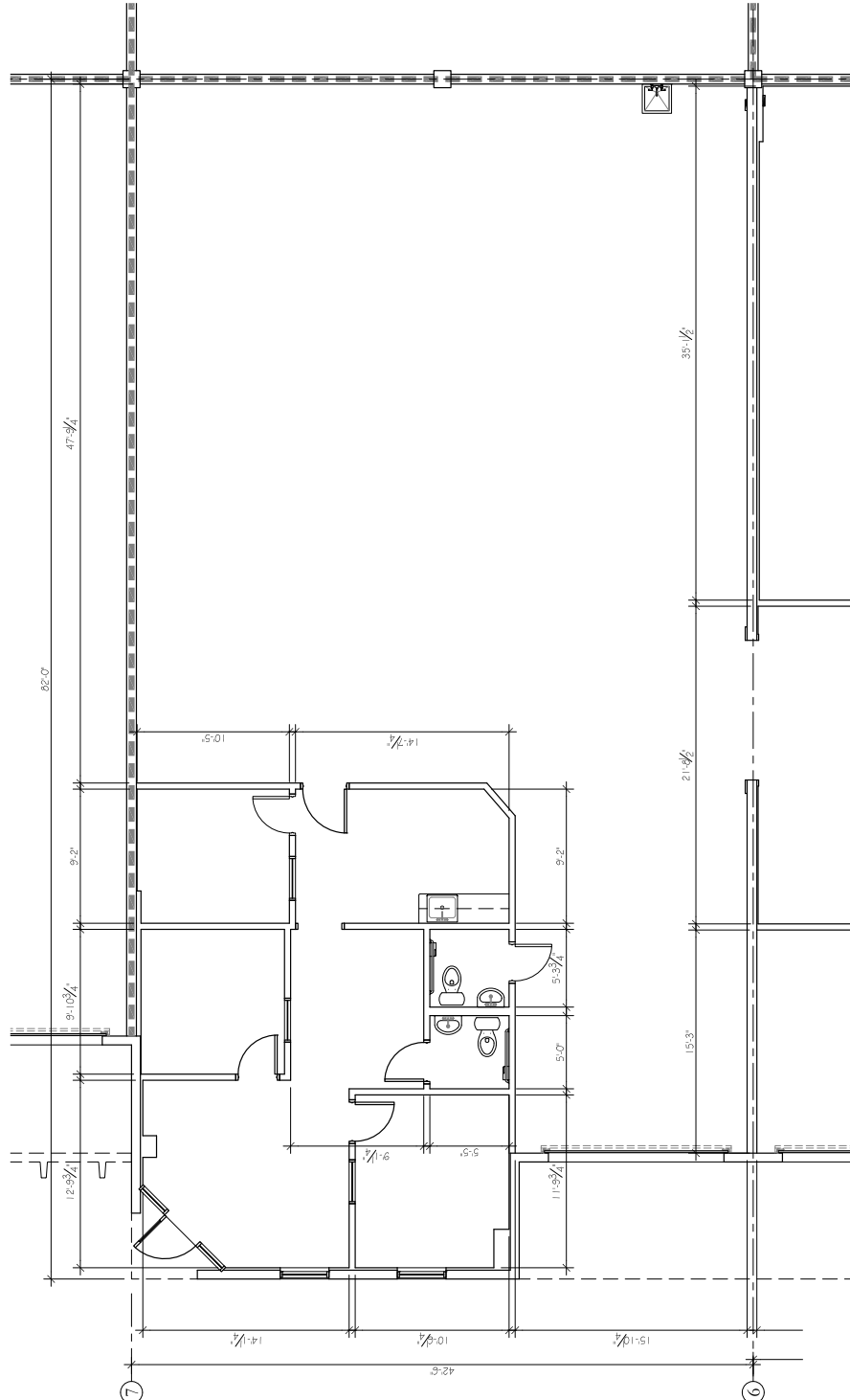
For Lease

Powerline Park

3000 NW 25th Avenue, Pompano Beach, FL 33069

Floor Plan

Total: 3,498 SF
Office: 857 SF
Warehouse: 2,641 SF



Powerline Park Site Plan

■ - Available Space



| Building | Suite | Total (SF) | Office (SF) | Warehouse (SF) | Loading | Clear Height | Available Date |
|----------|-------|------------|-------------|----------------|---------|--------------|----------------|
| 6 | 11 | 3,498 | 857 | 2,641 | 1 G | 20' | Now |

