

For Lease

2140 RUE KING EST

Sherbrooke, Québec

OBERFELD SNOWCAP

FOR MORE INFORMATION, PLEASE CONTACT:

MANON LAROSE*
Managing Director
Commercial Real Estate Services



MICHELLE MARCOTTE-BLART**
Director
Commercial Real Estate Services



*Chartered real estate broker, DA
** Commercial real estate broker

+1 (438) 990-8968
manonl@oberfeldsnowcap.com

+1 (514) 972-6163
michelle@oberfeldsnowcap.com



OVERVIEW

PROPERTY DETAILS

SQUARE FOOTAGE

Unit 210: 3,159 SF-Unit 100: 1,234 SF-Unit 102: 1,121 SF

ADDRESS

2140 Rue King Est, Sherbrooke, QC

AVAILABILITY

Immediately

NET RENT

Contact listing brokers

ADD RENT

\$8.55 PSF



Project Highlights



Ventilation Available



Ability to combine units



Along a main boulevard

AREA DEMOGRAPHICS

RADIUS : 10KM

2023 Population

131,094

Total Households

64,251

2023 Daytime Population

142,796

Average Household Income

CA\$79,583

Median Age

41.9

Average Household Expenditure

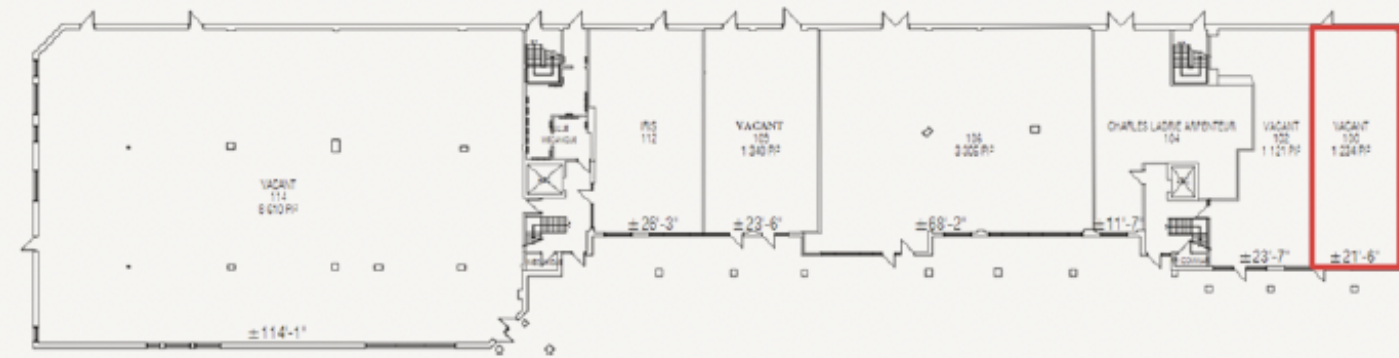
CA\$77,754



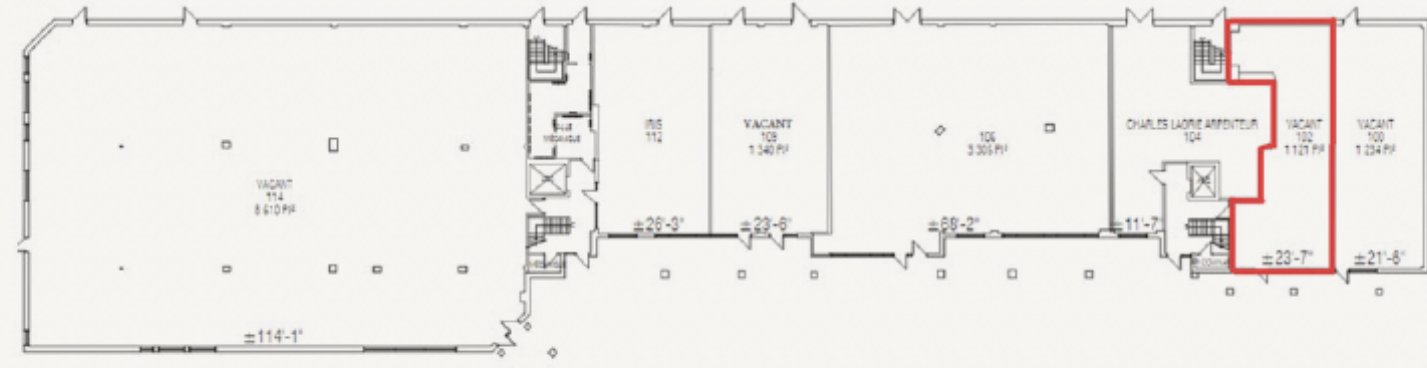
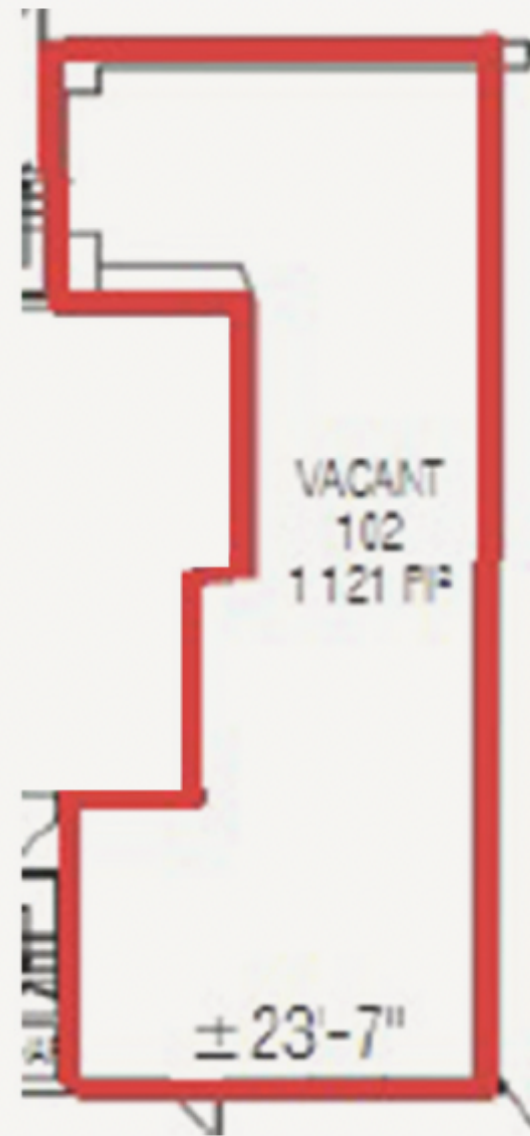
KEY FACTS

Demographic Data Source: Environics Analytics 2023

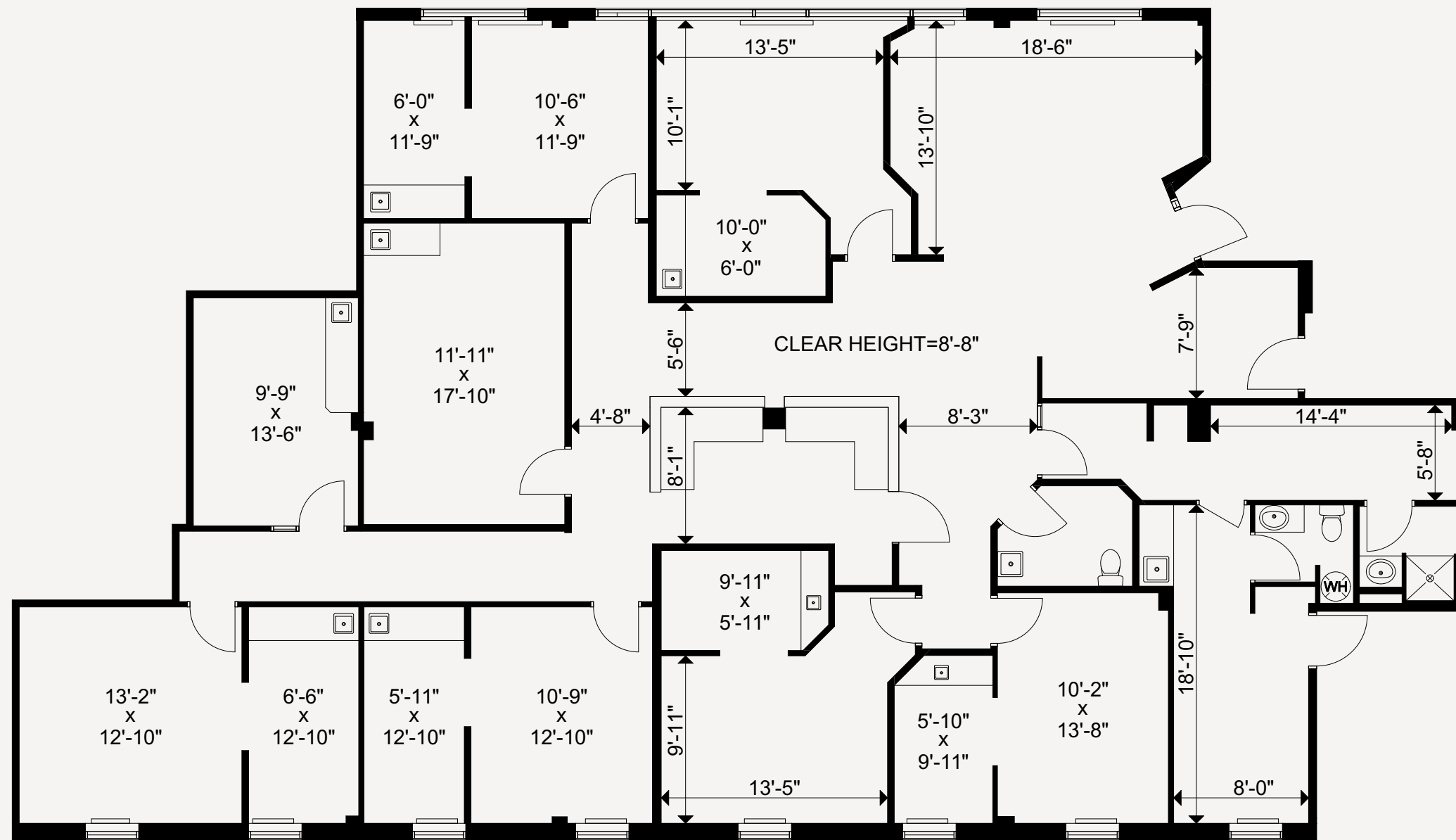
PLAN - UNIT 100



PLAN - UNIT 102



PLAN - UNIT 210



RETAILER MAP



www.oberfeldsnowcap.com

OBERFELD SNOWCAP

MANON LAROSE*

Managing Director
Commercial Real Estate Services
+1 (438) 990-8968
manonl@oberfeldsnowcap.com



MICHELLE MARCOTTE-BLART**

Director
Commercial Real Estate Services
+1 (514) 972-6163
michelle@oberfeldsnowcap.com

