

ONE DUPONT

1 Dupont Circle, NW
Washington, DC 20036

Office For Lease

2,292 - 21,016 SF



Leasing Information:
202.513.6700

Lincoln

Adam Biberaj
202.513.6736
abiberaj@lpc.com

Merrill Turnbull
202.513.6713
mturnbull@lpc.com

Tim Whitebread
202.513.6712
twhitebread@lpc.com

McKay Elliott
202.513.6724
melliott@lpc.com

Lincoln Property Company
101 Constitution Avenue, NW Suite 325 East
Washington, DC 20001

www.lpc.com

ONE DUPONT

1 Dupont Circle, NW | Washington, DC
20036

Office For Lease

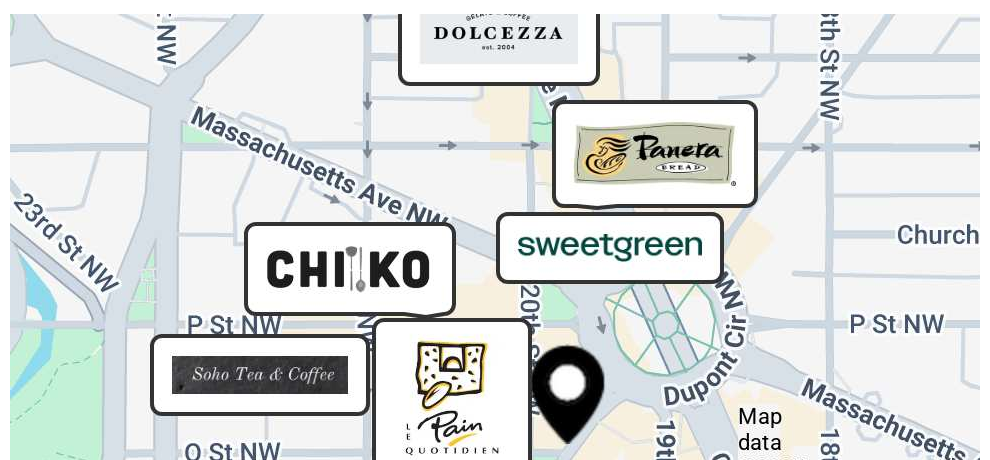
2,182 - 21,016 SF



Property Highlights

- Tax break incentives for educated and non-profit uses
- Four sides of glass
- Great views overlooking Dupont Circle
- 150-person conference center and training rooms
- On-site restaurant and fitness center
- Direct access to Dupont Metro station

Availabilities	SF	Lease Rate	Date Available
Lower Level	13,864 SF	Negotiable	Available Immediately
Suite 220	3,321 SF	Negotiable	Available Immediately
Suite 325	2,182 SF	\$44.00 FS	Available Immediately
Suite 405	3,306 SF	\$46.00 FS	Available Immediately
5th Floor	2,292 - 21,016 SF	\$47.00 FS	Available Immediately
Suite 615	2,789 SF	\$46.00 FS	Available Immediately



Adam Biberaj
202.513.6736
abiberaj@lpc.com

Merrill Turnbull
202.513.6713
mturnbull@lpc.com

Tim Whitebread
202.513.6712
twhitebread@lpc.com

McKay Elliott
202.513.6724
melliott@lpc.com

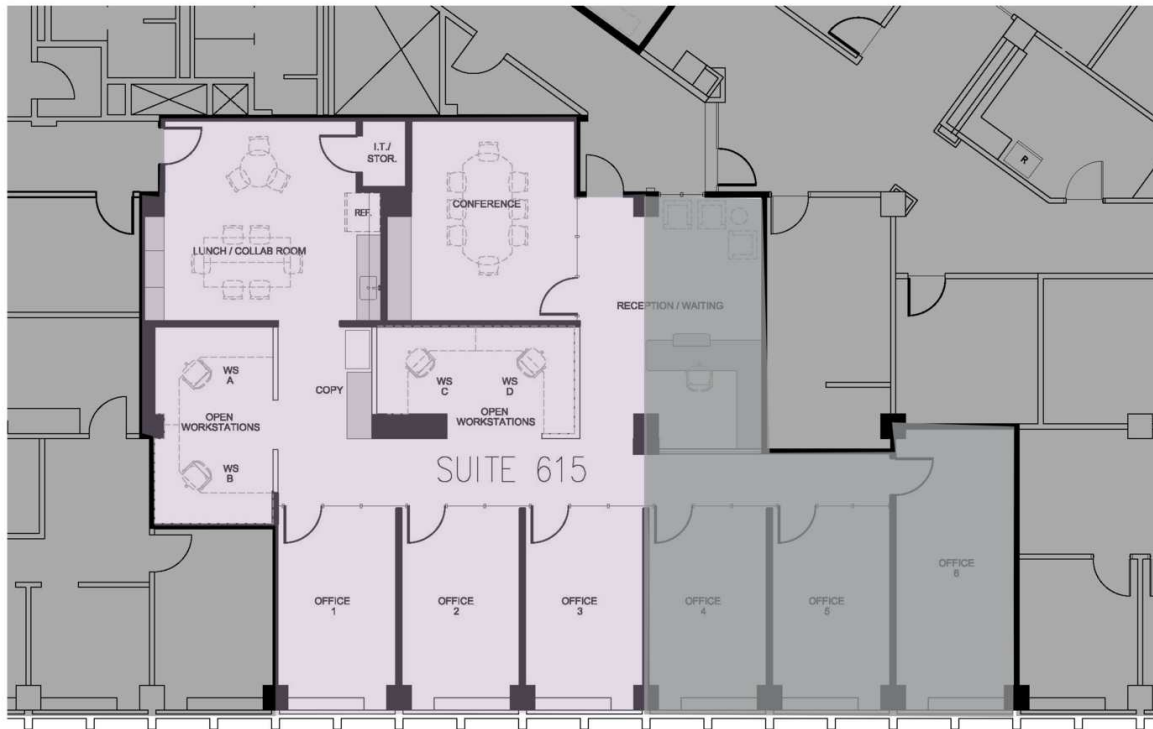
Lincoln

ONE DUPONT

1 Dupont Circle, NW | Washington, DC 20036

Suite 615

2,789 SF



20TH STREET

Suite	Size	Lease Rate	Description
■ Suite 615	2,789 SF	\$46.00 FS	Hypothetical Layout Available Immediately

Adam Biberaj
202.513.6736
abiberaj@lpc.com

Merrill Turnbull
202.513.6713
mturnbull@lpc.com

Tim Whitebread
202.513.6712
twhitebread@lpc.com

McKay Elliott
202.513.6724
melliott@lpc.com

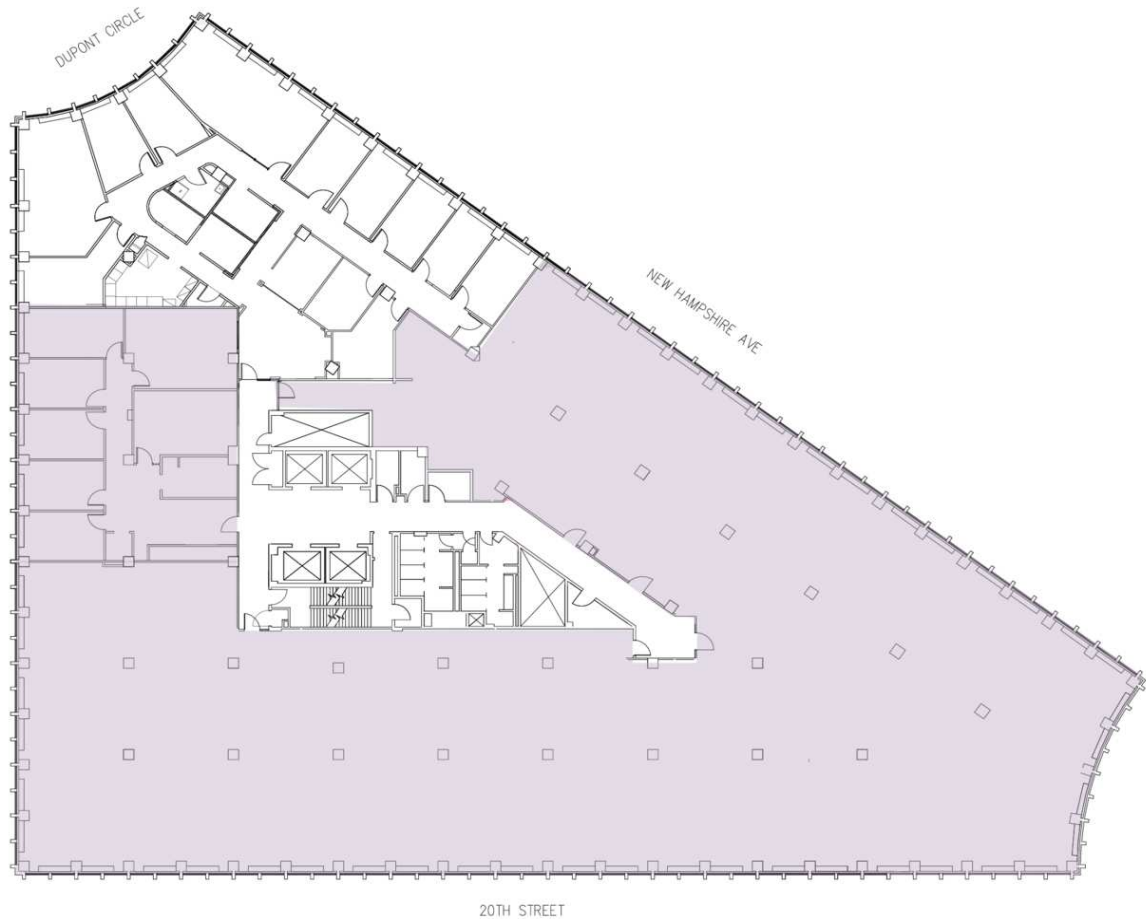
Lincoln

ONE DUPONT

1 Dupont Circle, NW | Washington, DC 20036

5th Floor

2,292 - 21,016 SF



20TH STREET

Suite	Size	Description
■ 5th Floor	2,292 - 21,016 SF	Available Immediately

Adam Biberaj
202.513.6736
abiberaj@lpc.com

Merrill Turnbull
202.513.6713
mturnbull@lpc.com

Tim Whitebread
202.513.6712
twhitebread@lpc.com

McKay Elliott
202.513.6724
melliott@lpc.com

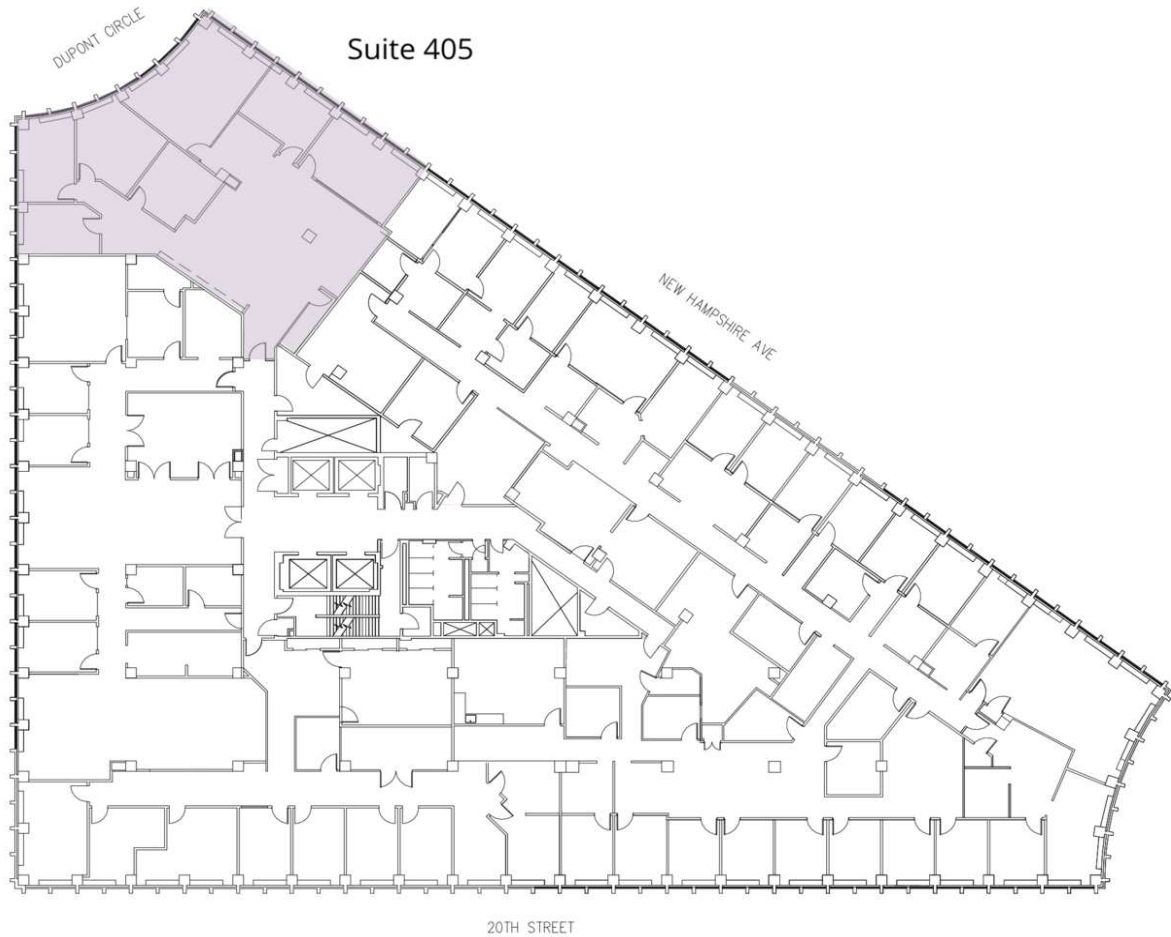
Lincoln

ONE DUPONT

1 Dupont Circle, NW | Washington, DC 20036

Suite 405

3,306 SF



Suite	Size	Description
■ Suite 405	3,306 SF	Available Immediately

Adam Biberaj
202.513.6736
abiberaj@lpc.com

Merrill Turnbull
202.513.6713
mturnbull@lpc.com

Tim Whitebread
202.513.6712
twhitebread@lpc.com

McKay Elliott
202.513.6724
melliott@lpc.com

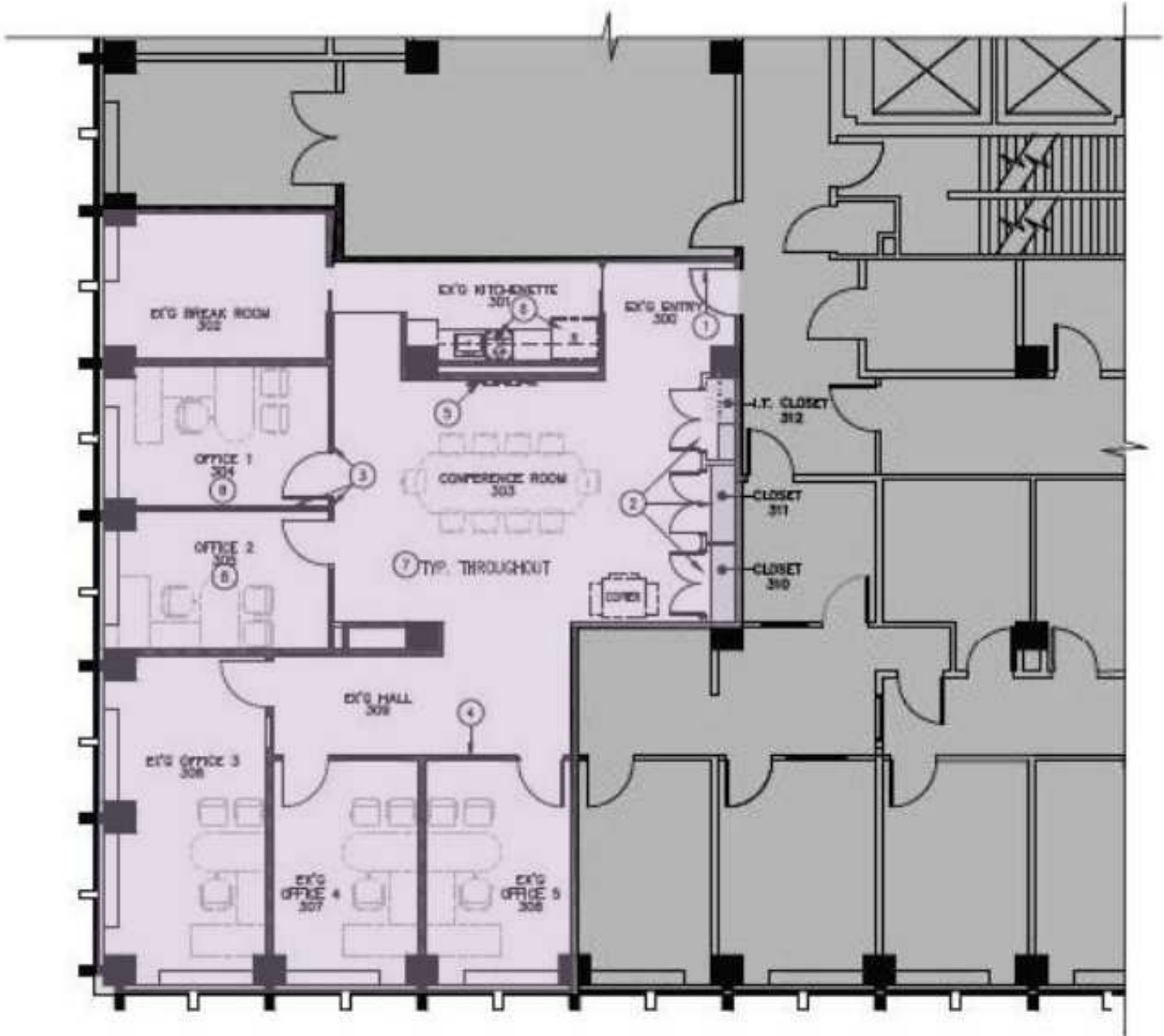
Lincoln

ONE DUPONT

1 Dupont Circle, NW | Washington, DC 20036

Suite 325

2,182 SF



Suite	Size	Description
■ Suite 325	2,182 SF	Available Immediately

Adam Biberaj
202.513.6736
abiberaj@lpc.com

Merrill Turnbull
202.513.6713
mturnbull@lpc.com

Tim Whitebread
202.513.6712
twhitebread@lpc.com

McKay Elliott
202.513.6724
melliott@lpc.com

Lincoln

ONE DUPONT

1 Dupont Circle, NW | Washington, DC 20036

Suite 220

3,321 SF



Suite	Size	Lease Rate	Description
■ Suite 220	3,321 SF	Negotiable	Available Immediately

Adam Biberaj
202.513.6736
abiberaj@lpc.com

Merrill Turnbull
202.513.6713
mturnbull@lpc.com

Tim Whitebread
202.513.6712
twhitebread@lpc.com

McKay Elliott
202.513.6724
melliott@lpc.com

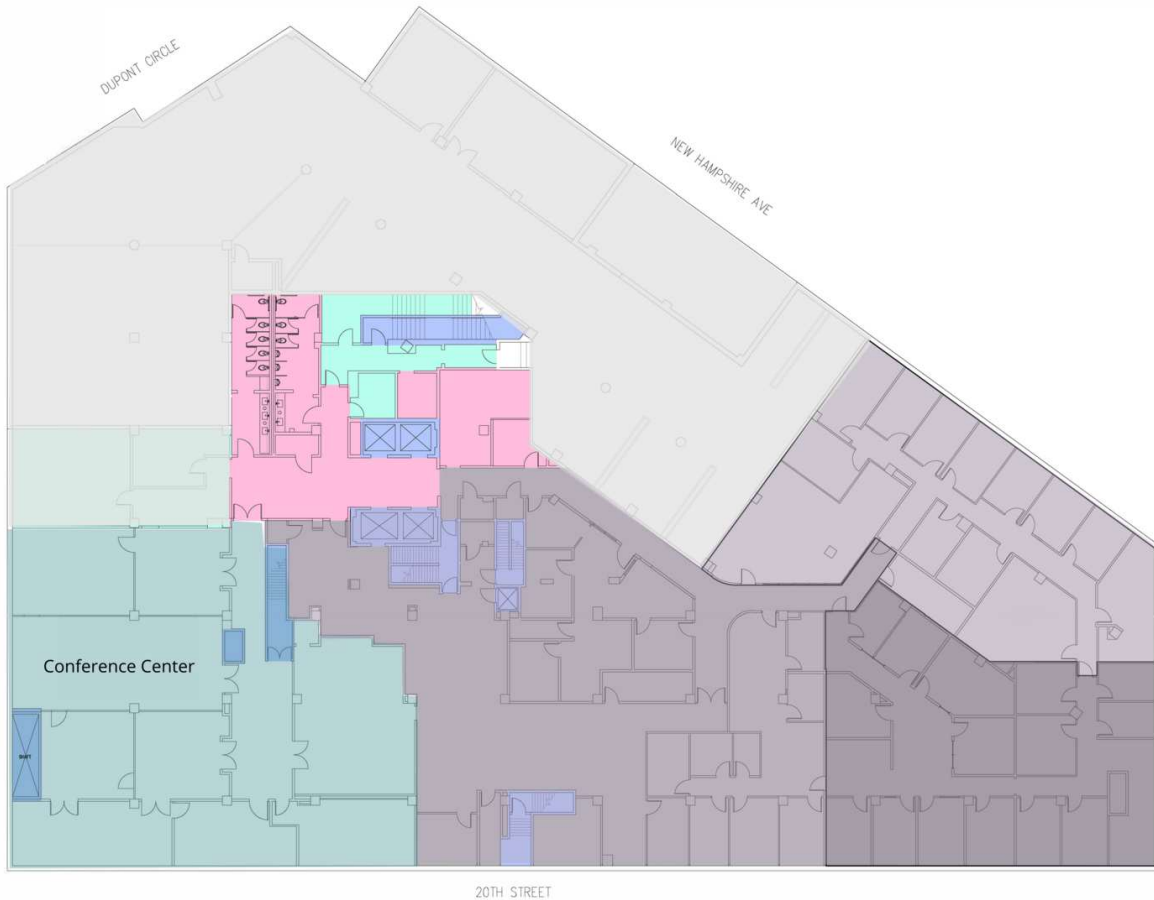
Lincoln

ONE DUPONT

1 Dupont Circle, NW | Washington, DC 20036

Lower Level

13,864 SF



Suite	Size	Lease Rate	Description
■ Lower Level	13,864 SF	Negotiable	Available Immediately

Adam Biberaj
202.513.6736
abiberaj@lpc.com

Merrill Turnbull
202.513.6713
mturnbull@lpc.com

Tim Whitebread
202.513.6712
twhitebread@lpc.com

McKay Elliott
202.513.6724
melliott@lpc.com

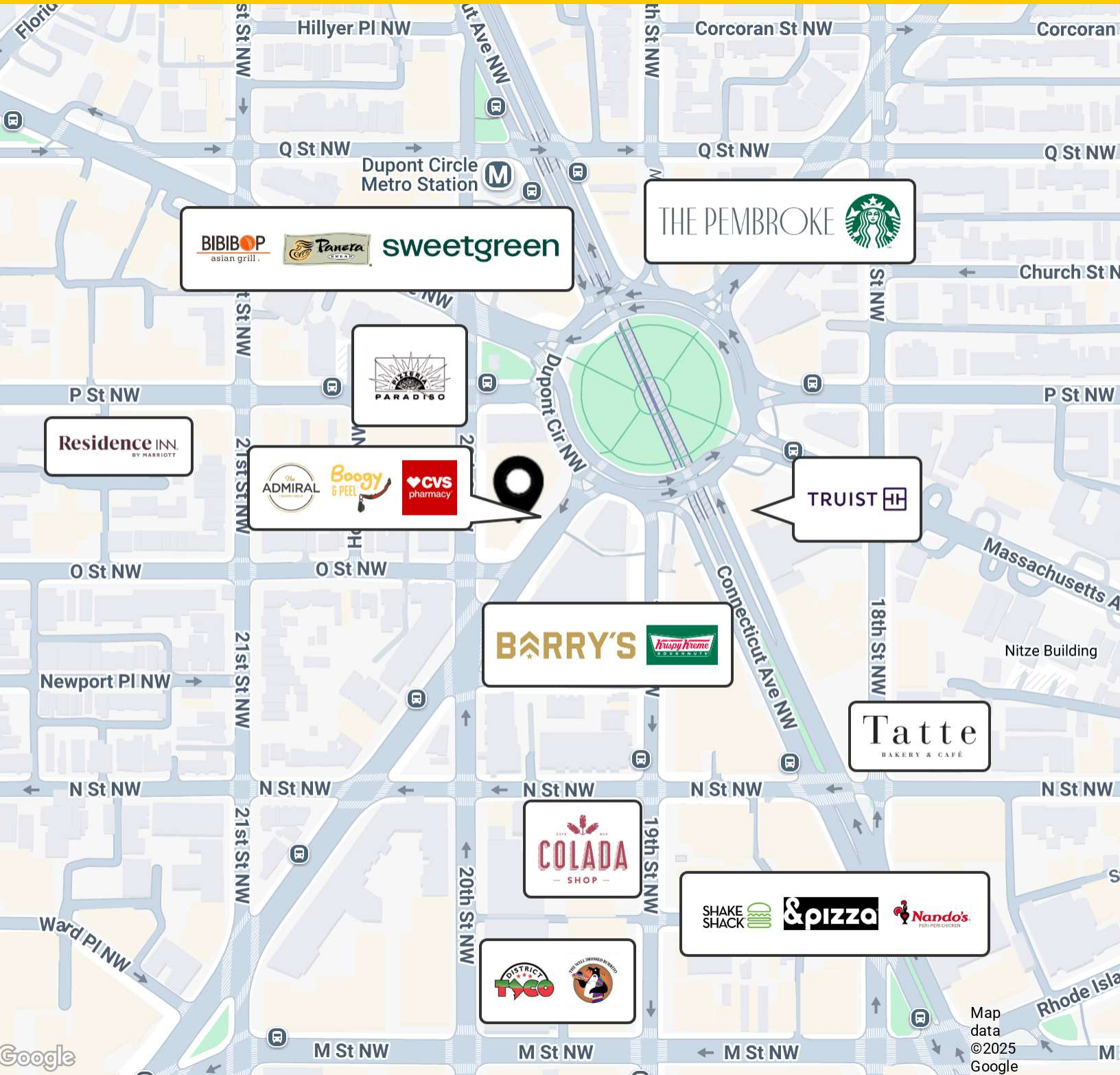
Lincoln

ONE DUPONT

1 Dupont Circle, NW | Washington, DC 20036

Dupont Amenities

2,182 - 21,016 SF



Adam Biberaj
202.513.6736
abiberaj@lpc.com

Merrill Turnbull
202.513.6713
mturnbull@lpc.com

Tim Whitebread
202.513.6712
twhitebread@lpc.com

McKay Elliott
202.513.6724
melliott@lpc.com

Lincoln

ONE DUPONT

1 Dupont Circle, NW | Washington, DC 20036

Property Amenities

2,182 - 21,016 SF



Adam Biberaj
202.513.6736
abiberaj@lpc.com

Merrill Turnbull
202.513.6713
mturnbull@lpc.com

Tim Whitebread
202.513.6712
twhitebread@lpc.com

McKay Elliott
202.513.6724
melliott@lpc.com

Lincoln



ONE DUPONT

1 Dupont Circle, NW
Washington, DC 20036

Leasing Information:
202.513.6700

Adam Biberaj
202.513.6736
abiberaj@lpc.com

Merrill Turnbull
202.513.6713
mturnbull@lpc.com

Tim Whitebread
202.513.6712
twhitebread@lpc.com

McKay Elliott
202.513.6724
melliott@lpc.com

Lincoln

Lincoln Property Company
101 Constitution Avenue, NW Suite 325 East
Washington, DC 20001

www.lpc.com