

**516 MALLOY COURT
CORONA, CA 92878**

NEW PAINT AND CARPET - TURNKEY



±12,260 SF INDUSTRIAL BUILDING FOR LEASE

CLICK HERE

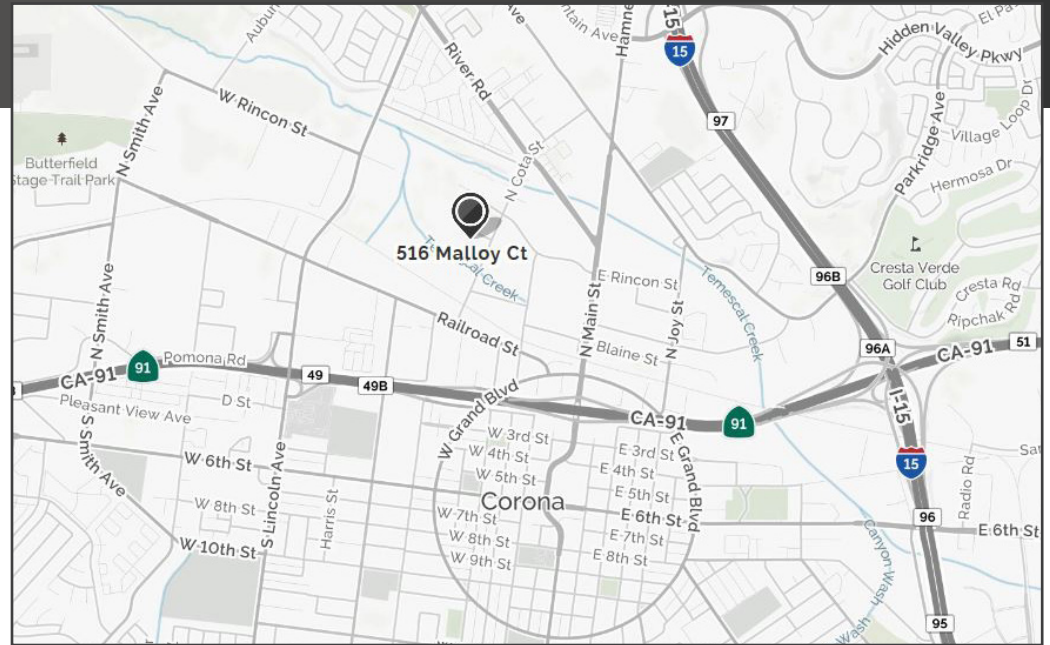


SITE FEATURES

±12,260 Square Foot Freestanding High Image Industrial Building situated on 0.74 Acres of Land located in the Rincon Business Center Phase II. Easy Access to 91 and I-15 Freeways.

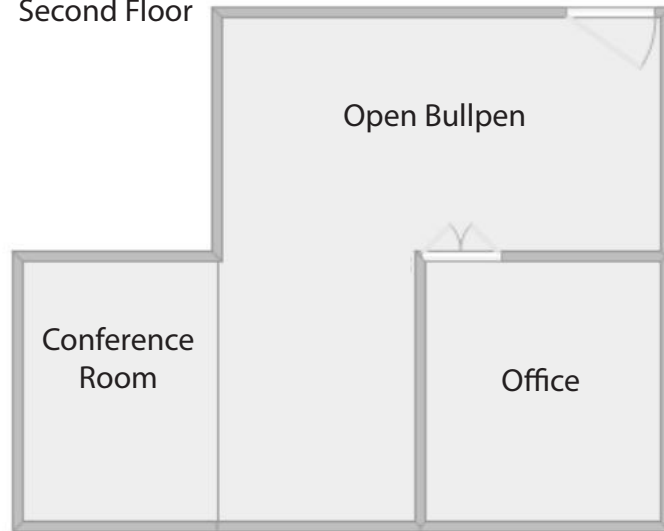
BUILDING FEATURES

- AVAILABLE SF: ±12,260 SF Industrial Building
- OFFICE SF: ±800 SF First Floor | ±740 Second Floor
- PROPERTY TYPE : Freestanding Industrial Building
- ZONING: M1
- GL DOORS: 2 (12'x14')
- CEILING HEIGHT : 24'
- PARKING: 28 Parking Stalls
- POWER: 400 Amps; 277/480V (Expandable)
- RESTROOMS: 1 Office Restroom; 1 Warehouse Restroom
- YARD: Large, Secured, Gated All-Concrete Yard
- SPRINKLED: 0.40GPM/2,000 SF
- YEAR BUILT: 2002



OFFICE FLOOR PLAN

Second Floor



[Click Here for Warehouse Virtual Tour](#)

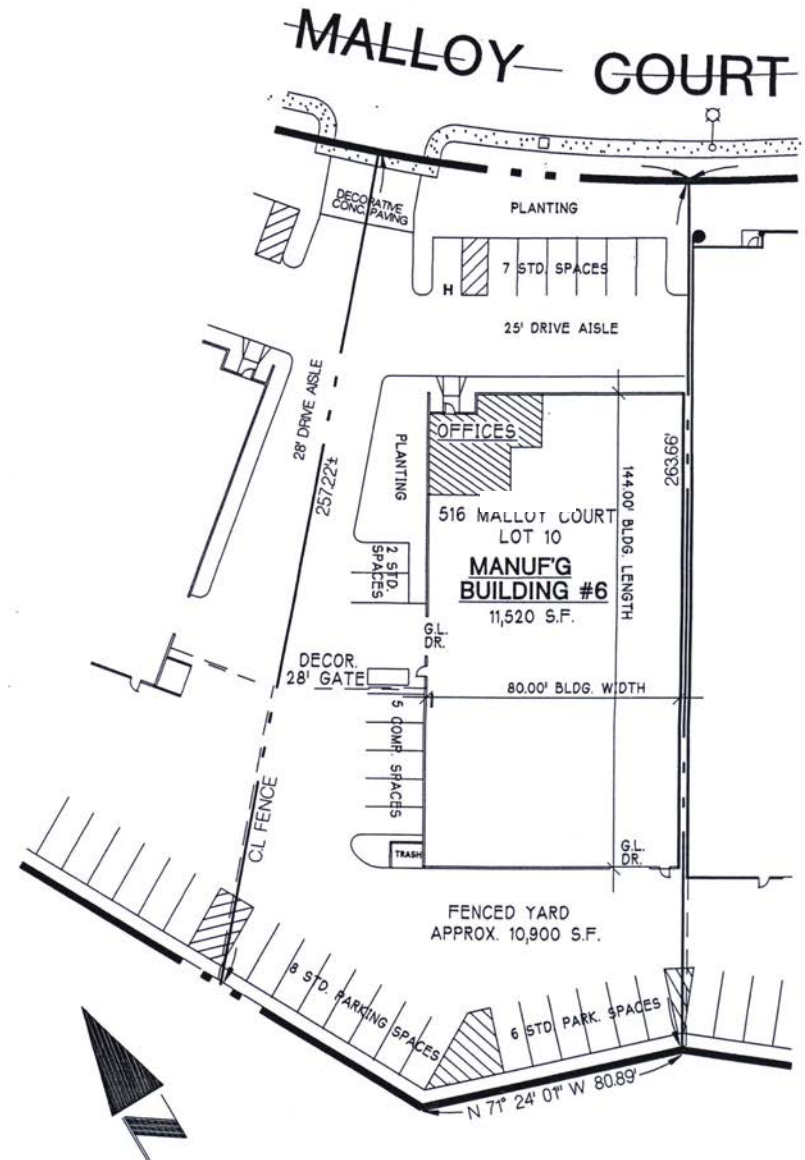


[Click Here for Second Floor Virtual Tour](#)

First Floor



[Click Here for First Floor Virtual Tour](#)





LAWRENCE C. NULL, SIOR

Senior Vice President
951.276.3616
lnull@lee-associates.com
DRE #00822133

JUSTIN NULL, SIOR

Vice President
951.276.3634
jnull@lee-associates.com
DRE #01899025