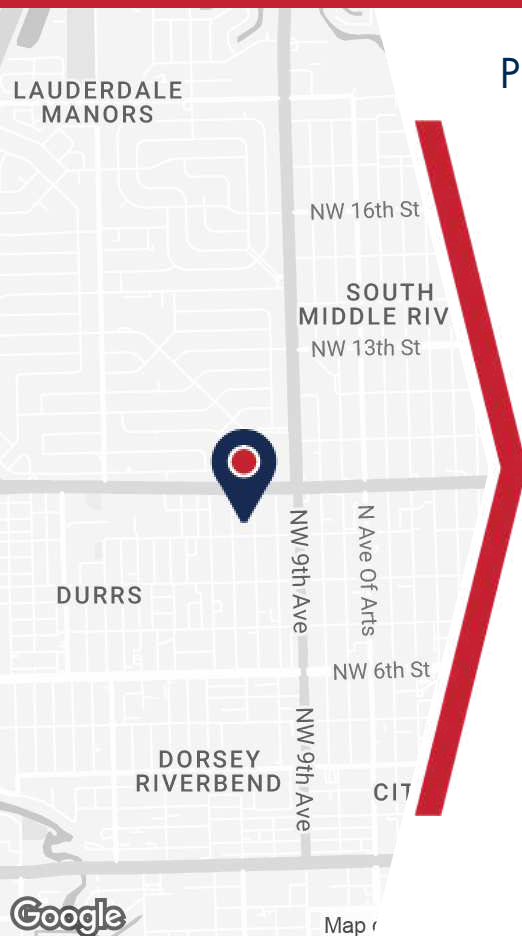


990 NW 11TH AVE

FORT LAUDERDALE, FL 33311



PROPERTY DETAILS

- #990 - 7,902 Total SF
- ±1,600 SF Office
- ±2,000 SF Mezzanine, not included in Total SF
- Fenced Parking Lot
- 24' Clear Height
- 3-Phase Power
- Two (2) 8' x 10' Dock-High Doors
- One (1) 12' x 14' Grade-Level Door
- One (1) 6' x 10' Forklift Door
- Zoning: B-3, Fort Lauderdale

ABOUT PROPERTY



PRICE

\$21.00 SF/yr (MG)



YEAR BUILT

1981



AVAILABLE SF

7,902



PARKING

Fenced Lot



LOCATION

Fort Lauderdale, FL

For more information:

Jordan Beck

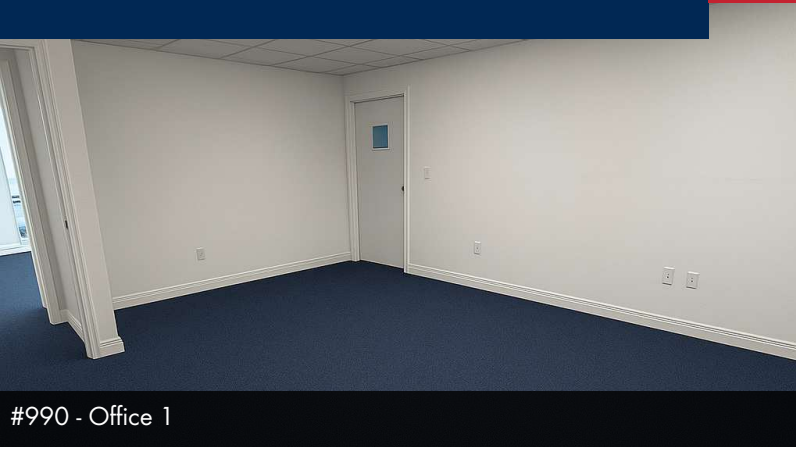
954.652.2033 | Jbeck@Bergercommercial.Com
bergercommercial.com

Calder Alfano

954.652.2041 | Calfano@Bergercommercial.Com



Information furnished regarding this property is from sources deemed reliable, but no warranty or representation as to the accuracy thereof and it is submitted subject to errors, omissions, prior sale, lease or withdrawal without prior notice.



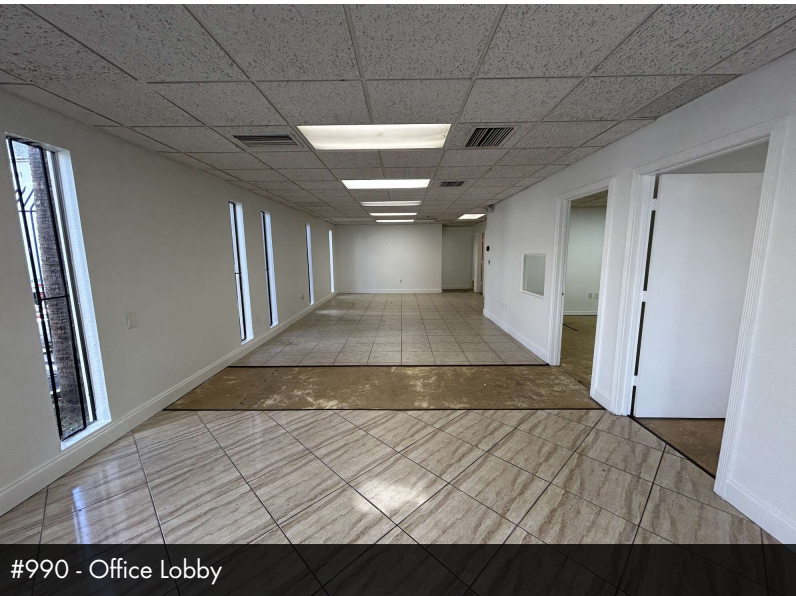
#990 - Office 1



#990 - Office 2



#990 - Warehouse



#990 - Office Lobby



#990 - Loading

For more information:

Jordan Beck

954.652.2033 | Jbeck@Bergercommercial.Com
bergercommercial.com

Calder Alfano

954.652.2041 | Calfano@Bergercommercial.Com



COMMERCIAL BROKERAGE AND PROPERTY MANAGEMENT



Map data ©2025 Google

For more information:

Jordan Beck

954.652.2033 | jbeck@Bergercommercial.com
bergercommercial.com

Calder Alfano

954.652.2041 | Calfano@Bergercommercial.com



COMMERCIAL BROKERAGE AND PROPERTY MANAGEMENT