

1645-1655 HAUSMAN RD
ALLENTOWN, PA 18104

FOR
LEASE



HAUSMAN PLAZA

Position your business at Hausman Plaza, a commercial strip center located on a highly visible corner along Route 309 and Hausman Road in the heart of the Lehigh Valley. This well-located retail and office center offers outstanding exposure, strong daily traffic counts, and convenient access to major commuter routes including Route 22, Interstate 78, and the PA Turnpike. With five suites currently available, Hausman Plaza presents a rare opportunity for retailers, service providers, medical users, and office professionals to establish a presence in one of the region's most active commercial corridors. The center benefits from ample parking, excellent signage opportunities, and a diverse mix of potential uses.

AVAILABLE
SPACE:
742 SF - 2,385 SF

\$16-\$28/SF NNN



Location Highlights:

- Prime corner location on Route 309, minutes from Route 22, I-78 and PA Turnpike
- Excellent visibility and signage opportunities
- Strong traffic counts and consumer flow
- Centrally located within the Lehigh Valley's major retail and residential growth corridor

kw
KELLERWILLIAMS
REAL ESTATE
Each office is individually owned and operated

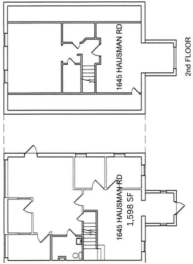
James Balliet
President
O 610-435-1800
C 610-972-6808
James@JBPropertyGroup.com
JBPropertyGroup.com

 **James Balliet**
PROPERTY GROUP

Michael G. Makhoul
Realtor
O 610-435-1800
C 610-390-3839
Mike@JBPropertyGroup.com
JBPropertyGroup.com

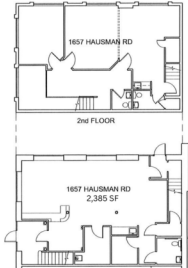
1645 Hausman Rd- 1,598 SF
 Office/Retail Space - \$22/SF NNN
 Current Build-Out - Veterinary Office

Flexible layout well-suited for medical, wellness, retail, or service-oriented businesses.



1657 Hausman Rd- Lower Level & Upper Level
 2,385 SF - Office Space - \$25/SF NNN

Spacious two-story office layout perfect for professional services, medical, or administrative users.



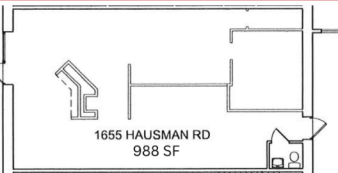
1653 Hausman Rd
742 SF - Garage Space - \$16/SF NNN



Ideal for contractors, storage, light service operations, or specialty users seeking functional workspace.

1655 Hausman Rd
988 SF - Retail Space - \$28/SF NNN
Current Build-Out - Hair Salon

Turn-key salon or boutique retail opportunity with strong storefront visibility.



1647 Hausman Rd- 1,066 SF
Office/Retail Space - \$22/SF NNN
Current Build-Out - Medical Office



High-visibility retail storefront ideal for boutique retail, food concepts, or service providers.



James Balliet
President
O 610-435-1800
C 610-972-6808
James@JBPropertyGroup.com
JBPropertyGroup.com



Michael C. Makhoul
Realtor
O 610-435-1800
C 610-390-3839
Mike@JBPropertyGroup.com
JBPropertyGroup.com

Hausman Plaza

Retail/Office/Garage

Space Available

