

LOS ANGELES CORPORATE CENTER

1255 Corporate Center Drive | Office Space For Lease

MONTEREY PARK, CALIFORNIA

Owned by

OMNINET



**Kidder
Mathews**

FOR LEASE

Los Angeles Corporate Center

1255 CORPORATE CENTER DRIVE | MONTEREY PARK, CALIFORNIA

AVAILABILITIES

Suite	RSF	Rate	Description
200	1,081	\$2.95/RSF per month, FSG	Two window offices, one interior office, break room and open space



LINDA LEE
626.873.1802
linda.lee@kidder.com
LIC N° 01278768

BILL BOYD
626.873.1801
bill.boyd@kidder.com
LIC N° 00816177

SCOTT UNGER
626.873.1803
scott.unger@kidder.com
LIC N° 01855517

KIDDER.COM

This information supplied herein is from sources we deem reliable. It is provided without any representation, warranty, or guarantee, expressed or implied as to its accuracy. Prospective Buyer or Tenant should conduct an independent investigation and verification of all matters deemed to be material, including, but not limited to, statements of income and expenses. Consult your attorney, accountant, or other professional advisor.

PROFESSIONAL ownership and management - Omninet Capital

CLASS A office space

LARGE floor plates

CORPORATE identity

EV charging stations

DIRECT access to the 10, 710, and 60 freeways

EASY access to mass transit

CENTRALLY located to numerous restaurants and retail amenities

ENERGY STAR certified

4/1,000 free parking

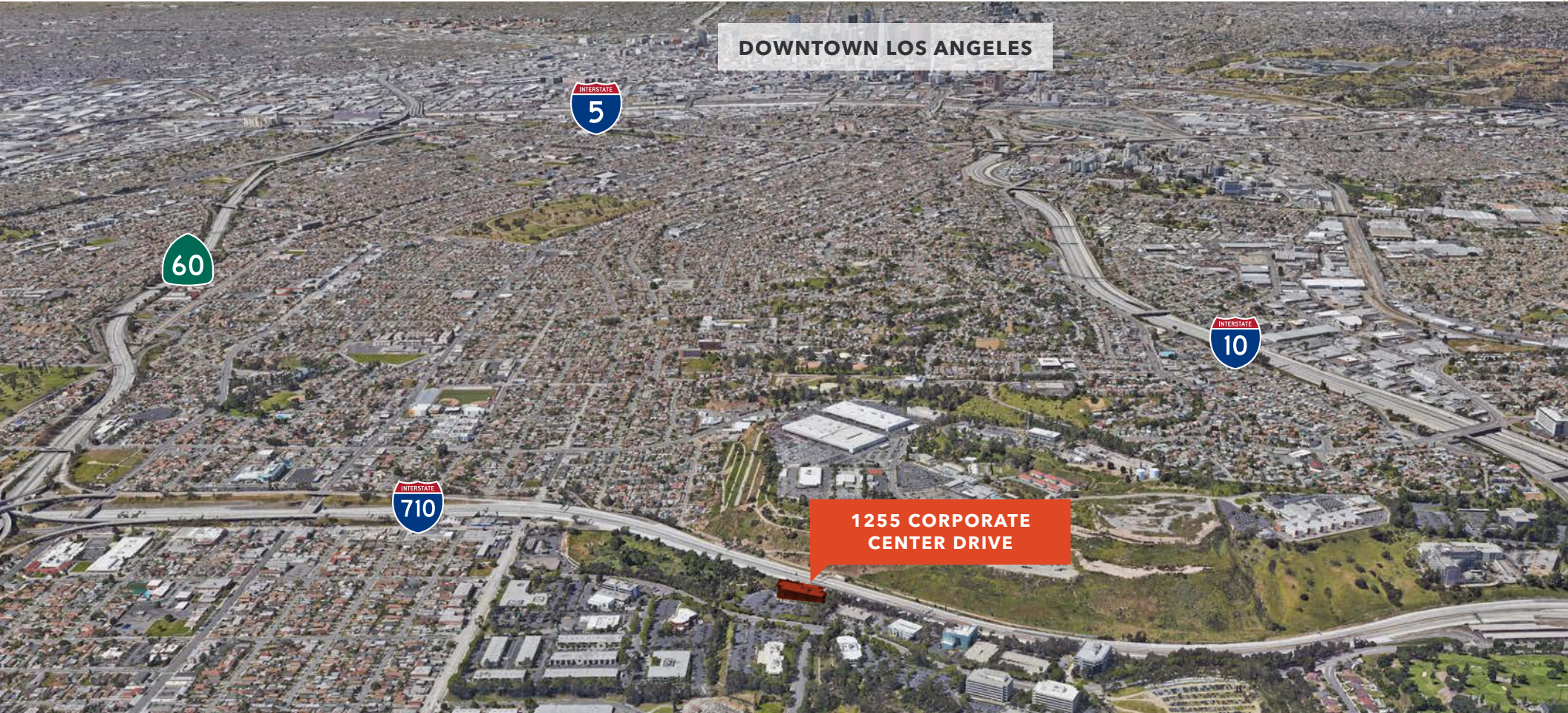
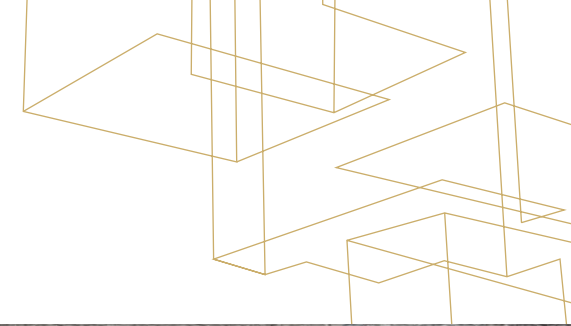
OMNINET



FOR LEASE

Los Angeles Corporate Center

1255 CORPORATE CENTER DRIVE | MONTEREY PARK, CALIFORNIA



DOWNTOWN LOS ANGELES

**1255 CORPORATE
CENTER DRIVE**

LINDA LEE
626.873.1802
linda.lee@kidder.com
LIC N° 01278768

BILL BOYD
626.873.1801
bill.boyd@kidder.com
LIC N° 00816177

SCOTT UNGER
626.873.1803
scott.unger@kidder.com
LIC N° 01855517

KIDDER.COM

This information supplied herein is from sources we deem reliable. It is provided without any representation, warranty, or guarantee, expressed or implied as to its accuracy. Prospective Buyer or Tenant should conduct an independent investigation and verification of all matters deemed to be material, including, but not limited to, statements of income and expenses. Consult your attorney, accountant, or other professional advisor.

OMNINET



**Kidder
Mathews**

FOR LEASE

Los Angeles Corporate Center

1255 CORPORATE CENTER DRIVE | MONTEREY PARK, CALIFORNIA



LINDA LEE
626.873.1802
linda.lee@kidder.com
LIC N° 01278768

BILL BOYD
626.873.1801
bill.boyd@kidder.com
LIC N° 00816177

SCOTT UNGER
626.873.1803
scott.unger@kidder.com
LIC N° 01855517

KIDDER.COM

This information supplied herein is from sources we deem reliable. It is provided without any representation, warranty, or guarantee, expressed or implied as to its accuracy. Prospective Buyer or Tenant should conduct an independent investigation and verification of all matters deemed to be material, including, but not limited to, statements of income and expenses. Consult your attorney, accountant, or other professional advisor.

OMNINET

km Kidder Mathews

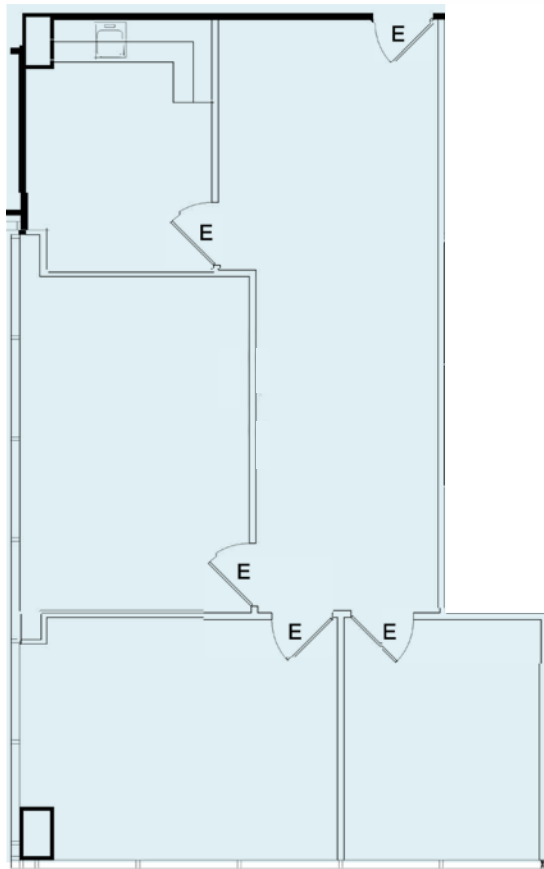
FOR LEASE

Los Angeles Corporate Center

1255 CORPORATE CENTER DRIVE | MONTEREY PARK, CALIFORNIA

Suite 200

TWO WINDOW OFFICES, one interior office, break room and open space



1,081

SQUARE FEET

\$2.95/RSF

PER MONTH FSG

LINDA LEE

626.873.1802

linda.lee@kidder.com

LIC N° 01278768

BILL BOYD

626.873.1801

bill.boyd@kidder.com

LIC N° 00816177

SCOTT UNGER

626.873.1803

scott.unger@kidder.com

LIC N° 01855517

KIDDER.COM

This information supplied herein is from sources we deem reliable. It is provided without any representation, warranty, or guarantee, expressed or implied as to its accuracy. Prospective Buyer or Tenant should conduct an independent investigation and verification of all matters deemed to be material, including, but not limited to, statements of income and expenses. Consult your attorney, accountant, or other professional advisor.

OMNINET



**Kidder
Mathews**