



PORT EVERGLADES AREA
46,865 SF FOR SUBLEASE

1700

ELLER DRIVE

Fort Lauderdale, FL
33316





ABOUT THE BUILDING

- 46,865 SF for Sublease in Port Everglades area
- 1,780 SF office
- 36' clear height
- 1/1,000 SF parking ratio
- ESFR sprinkler system
- 400 amps of 3-phase 480v power

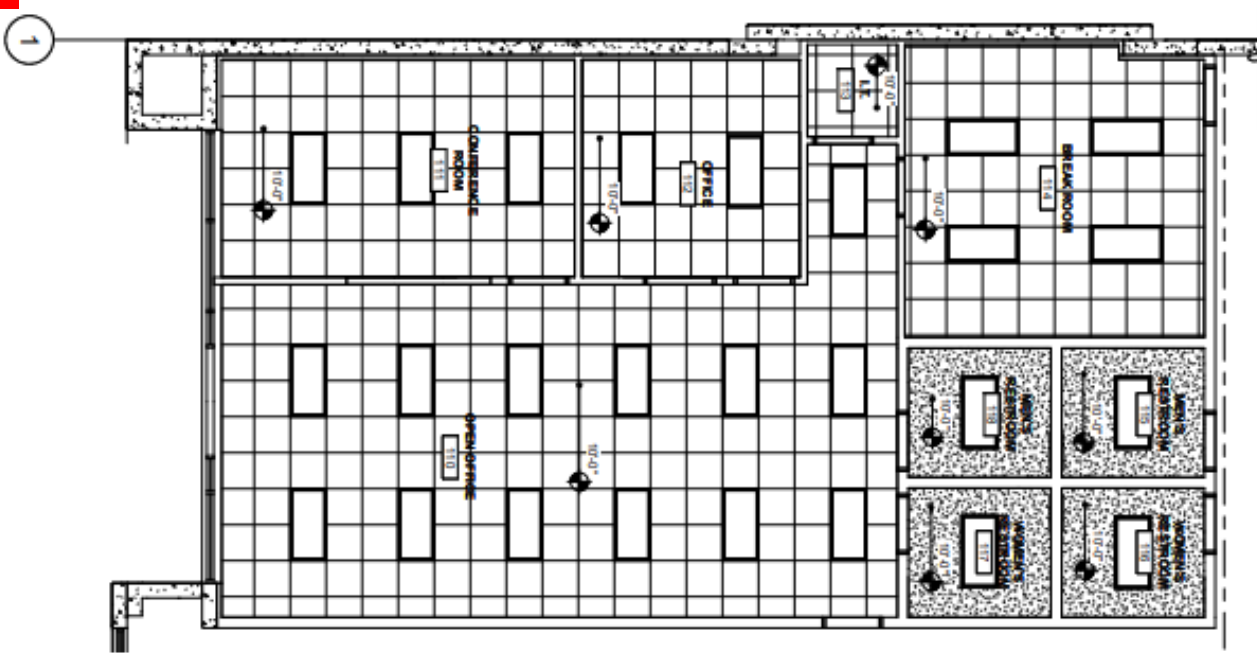


- 185' private truck court
- 6 dock doors, 1 with pit leveler
- 1 oversized drive-in ramp
- Lease Rate: \$17.95 NNN, \$8.06 OpEx

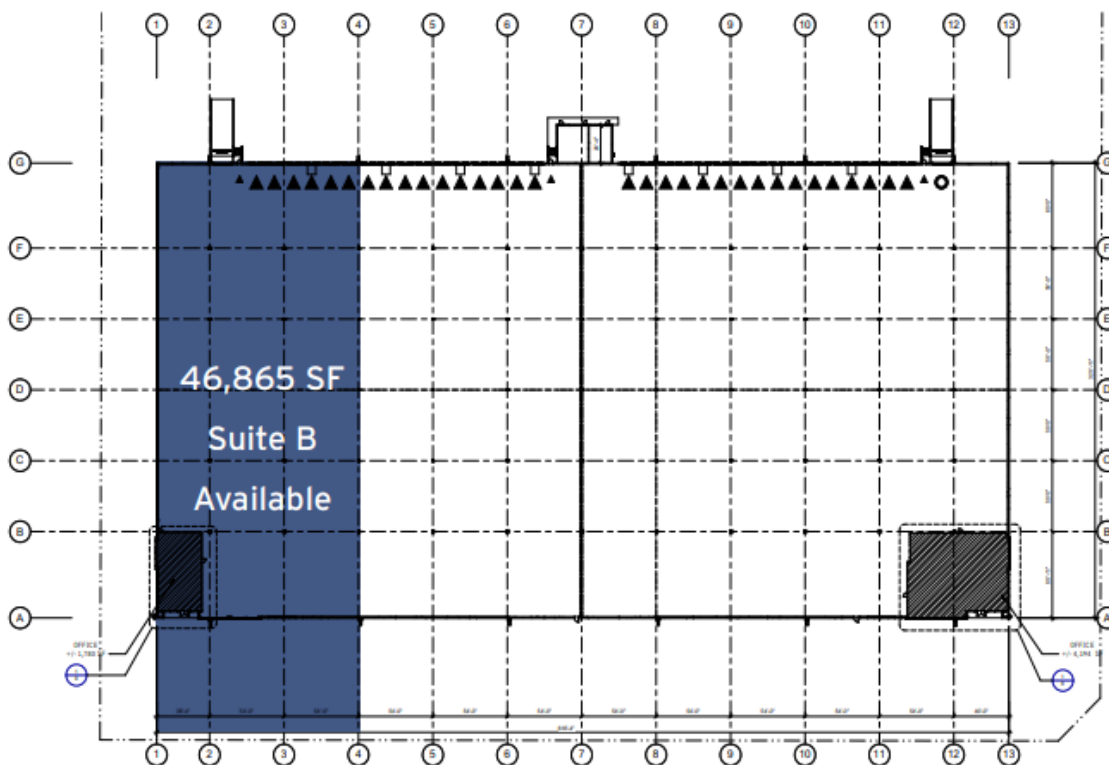
SITE PLAN



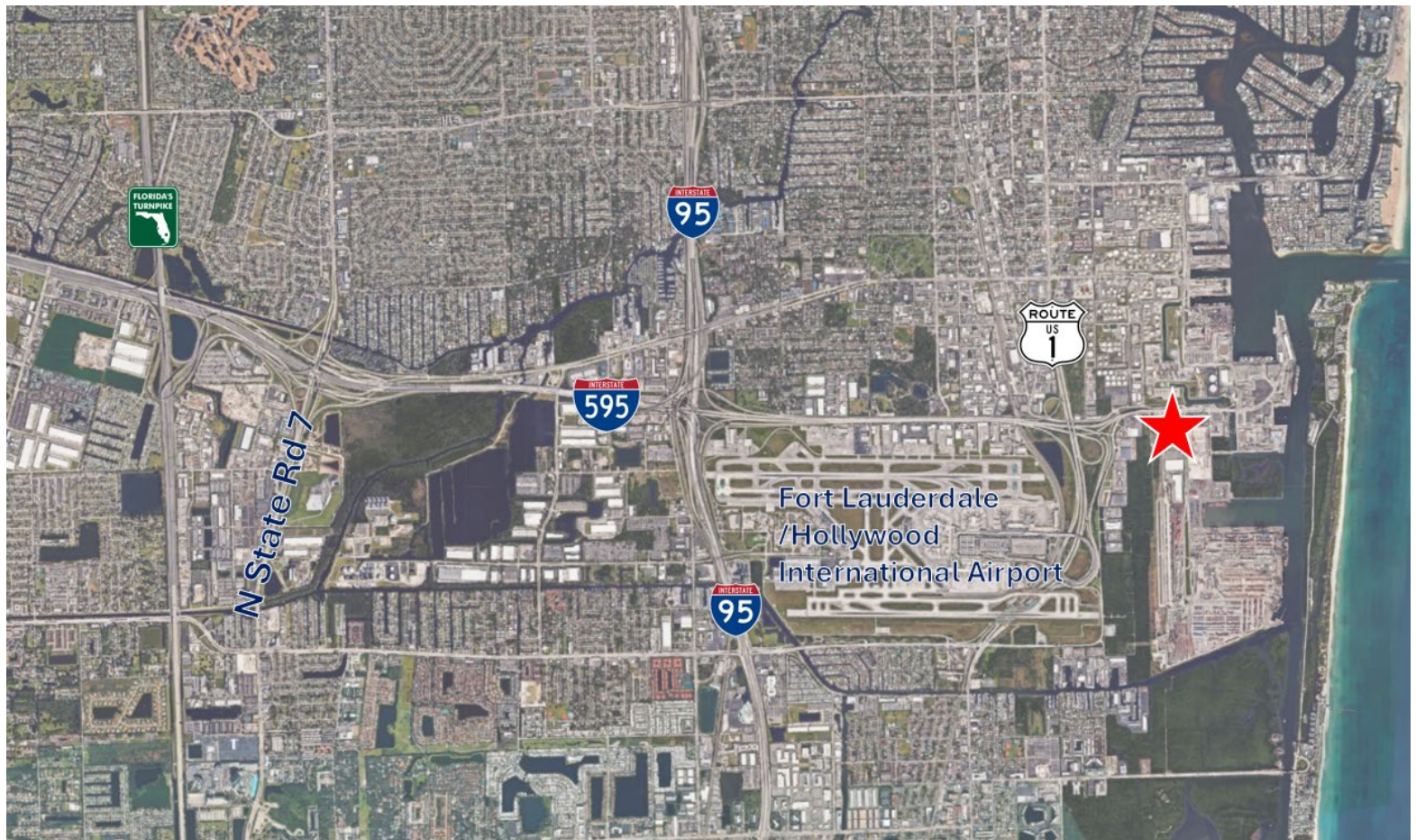
OFFICE FLOOR PLAN



BUILDING FLOOR PLAN



LOCATION OVERVIEW



CONTACTS

Chris Metzger, SIOR

+1 954 415 9155

Chris.metzger@cushwake.com

Matthew G. McAllister, SIOR

+1 561 901 5216

Matthew.mcallister@cushwake.com

