



For sublease

4023-4033 Tampa Rd., Oldsmar FL 34677



Sublease highlights:

- Furniture available
- 3.00/1,000 SF parking
- 20' clear height
- 30 day occupancy
- Negotiable rate
- Lease term through 9/30/2026

Availabilities:

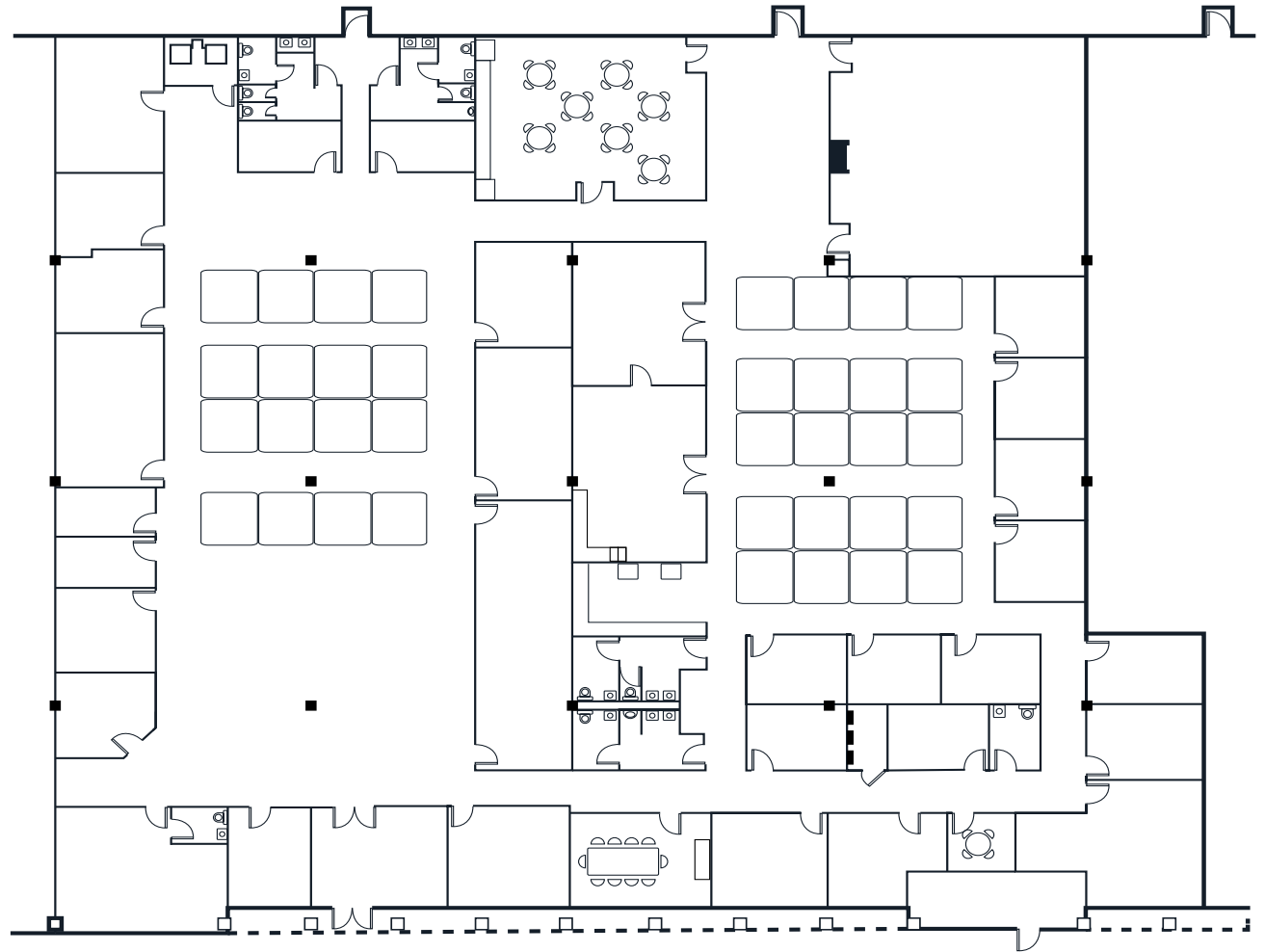
4023 Tampa Rd.	Suite 2200/2400	21,400 SF
4033 Tampa Rd.	Suite 100/102	4,541 SF
4033 Tampa Rd.	Suite 103	10,315 SF



Suite 2200/2400
21,400 SF available

Space features:

- 36 workstations
- 18 private offices
- 3 conference rooms
- 2 training rooms
- Large cafe
- Work room
- Lobby/reception
- Collaboration areas



Suite 2200/2400
21,400 SF available

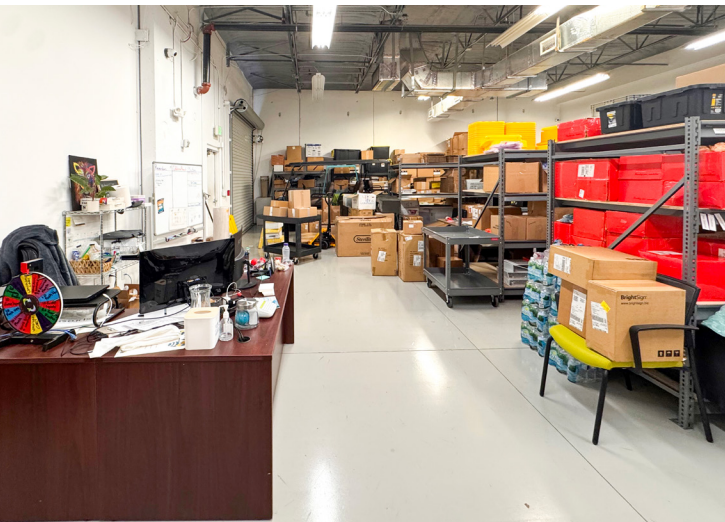
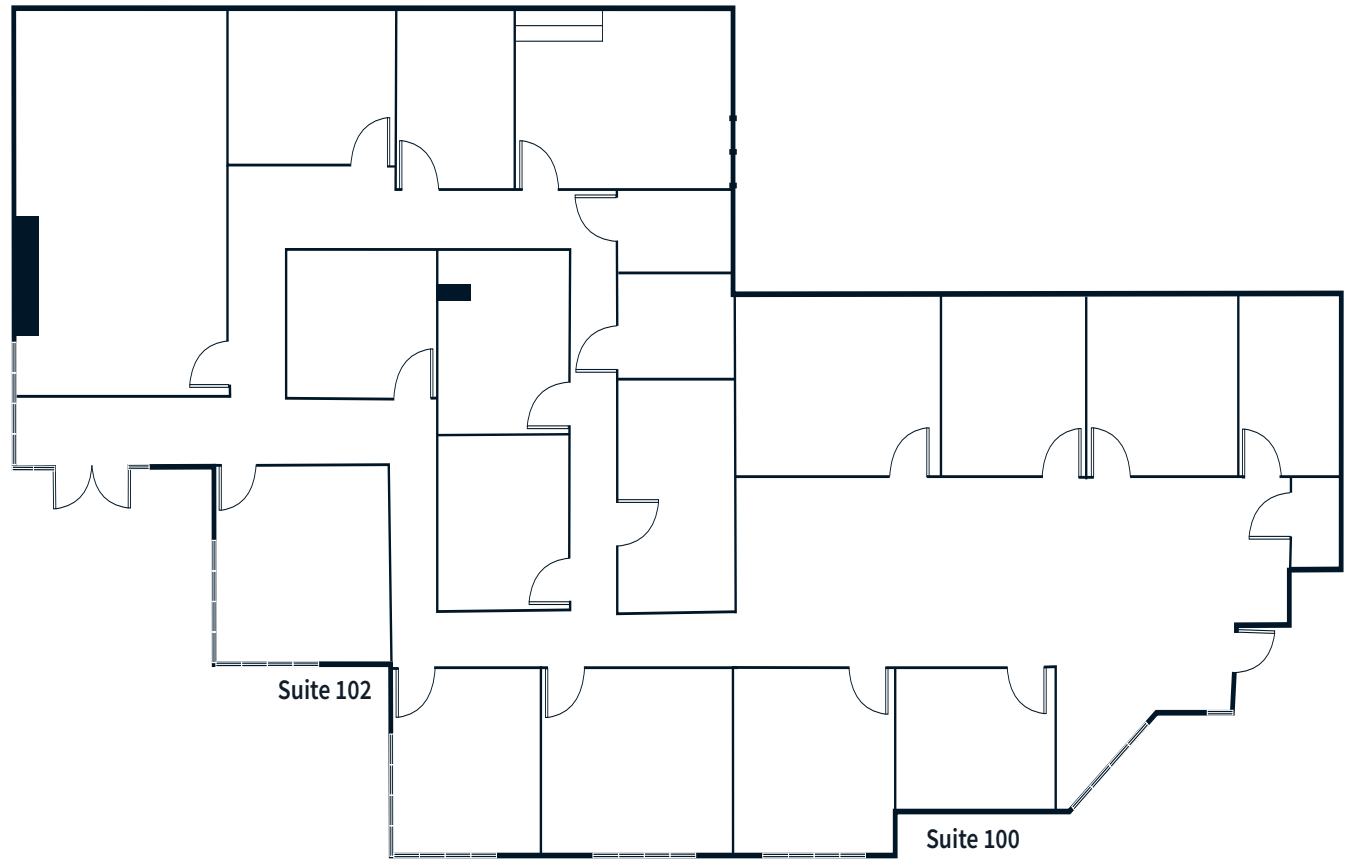


Suite 100/102

4,541 SF available

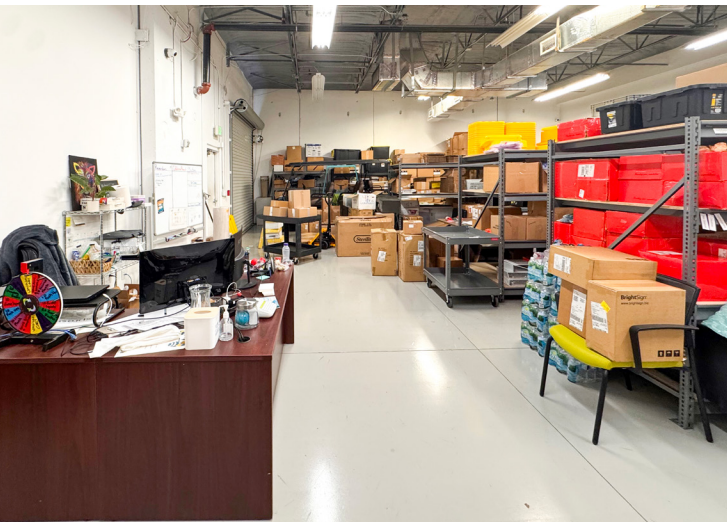
Space features:

- Open area workstations
- 15 private offices
- Conference room
- Ample cafe
- Work room
- Lobby/reception
- Warehouse with roll up door
- In-suite restrooms



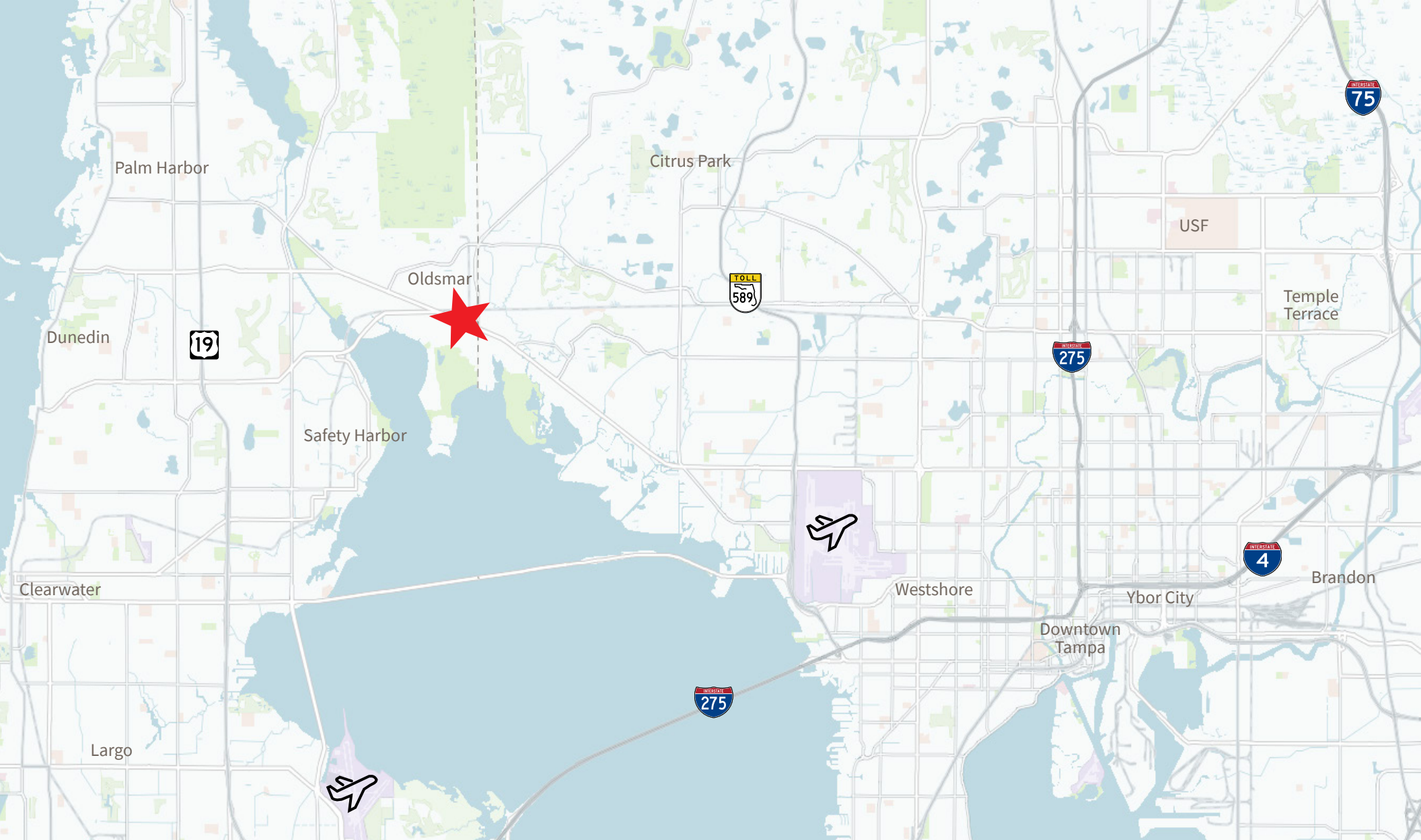
4033 Tampa Rd. / Oldsmar

Suite 100/102
4,541 SF available



Suite 103
10,315 SF available





Caleb Lewis

Exec. Managing Director

Caleb.Lewis@jll.com

+1 813 387 1289

Brad Knop

Senior Vice President

Brad.Knop@jll.com

+1 813 387 1296

Isaac Gilmore

Associate

Isaac.Gilmore@jll.com

+1 813 240 9173