

RETAIL/OFFICE SPACE • PRIVATE ENTRANCE • SPLIT SYSTEM IN PLACE • PRIME RIDGEWOOD



1829 GROVE STREET

LOCATED BETWEEN ONDERDONK AVENUE AND SENECA AVENUE

- Approx. 376 SF of retail / office space
- Private entrance on Grove Street
- One split-system HVAC
- Private bathroom
- Pantry with sink
- Efficient layout ideal for office, studio, or service-based use
- Located in a well-trafficked Ridgewood corridor
- Dry use only, with other uses considered

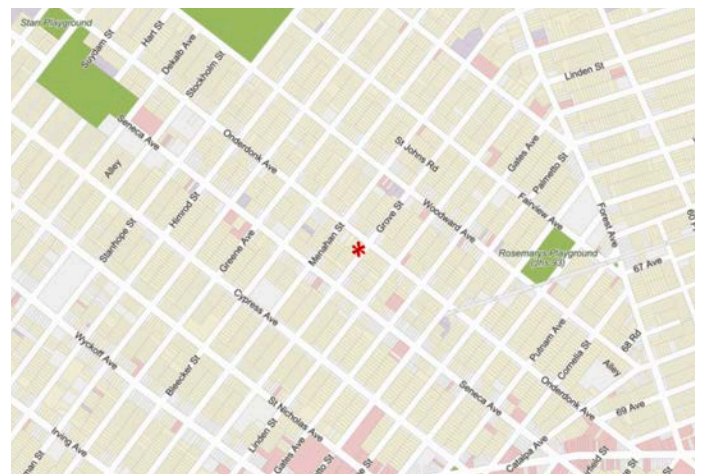
LICENSED BROKER

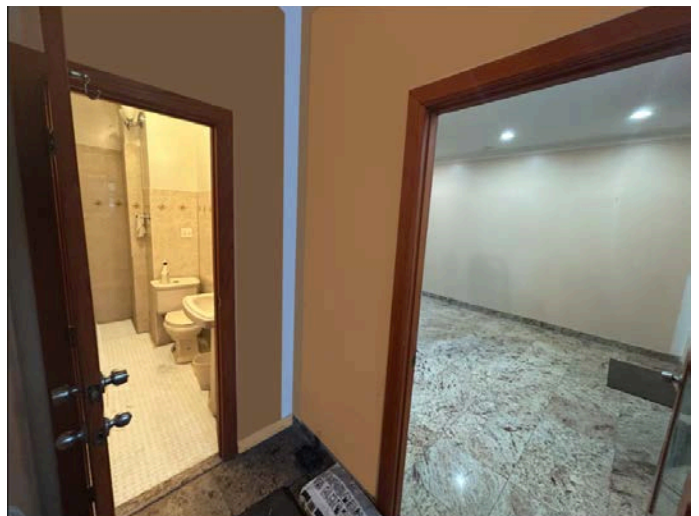
EVERGREEN REALTY & INVESTMENTS

PHONE : 646.838.1378

E- MAIL : INFO@EVRGREALTY.COM

\$2,300/MONTH





FLOORPLAN:

