



VALLEVISTA

515 MARIN STREET, THOUSAND OAKS | CA

Professionally Managed By

OWN LA

No warranty or representation is made to the accuracy of the foregoing information.
Terms of sale or lease and availability are subject to change or withdrawal without notice.

JARED SMITS
PRINCIPAL
818.444.4986
jsmits@lee-re.com
License ID #01839532

MARK LEONARD
PRINCIPAL
818.449.4414
mleonard@lee-re.com
License ID #01031863



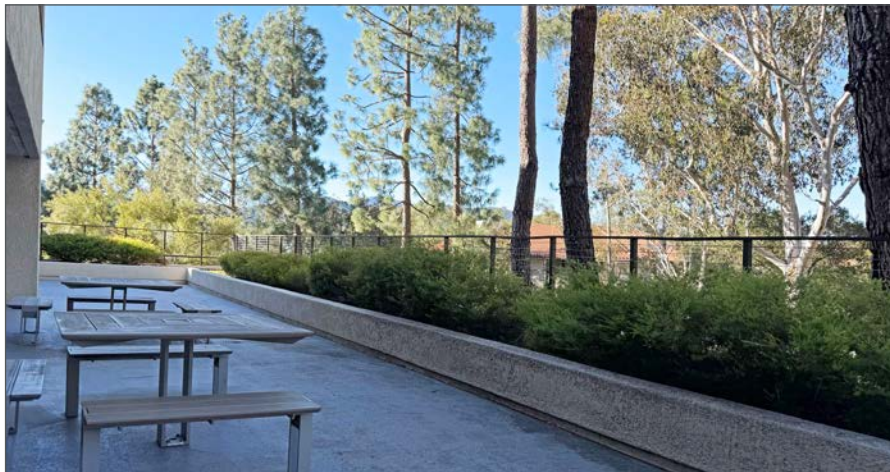
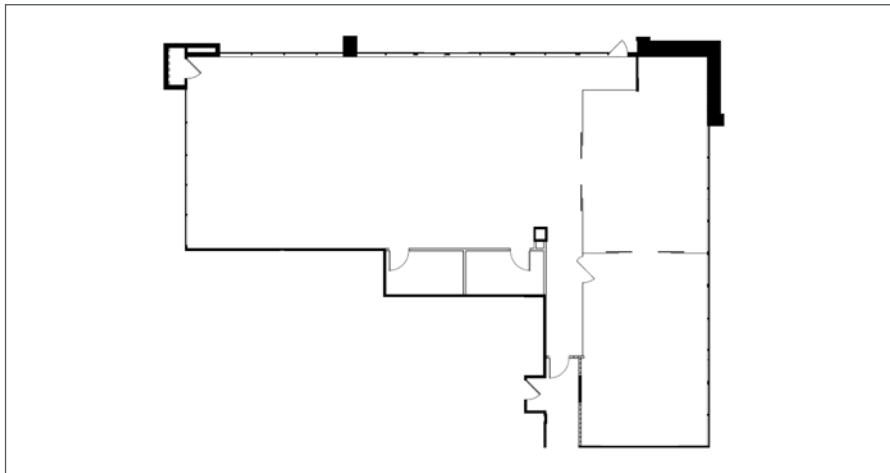
LEE & ASSOCIATES
COMMERCIAL REAL ESTATE SERVICES



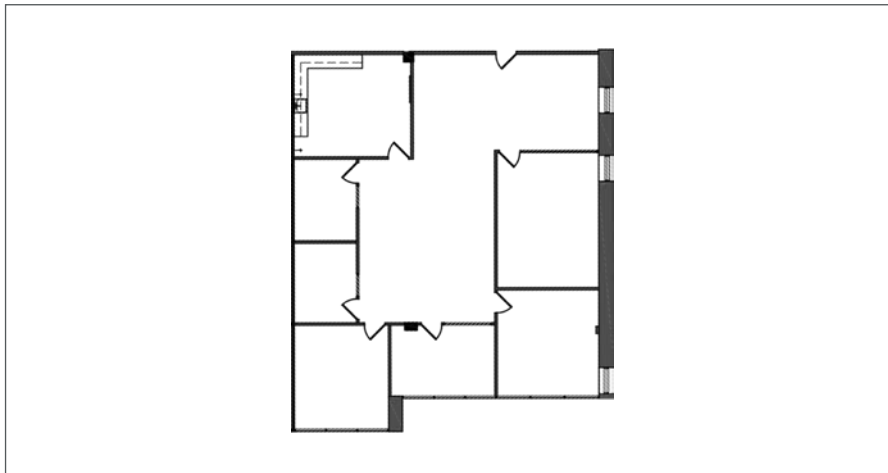
PROPERTY HIGHLIGHTS

- 4 Story Class “A” Landmark Office Building Consisting of 63,008 RSF
- New Ownership & Management
- Private Patios with Amazing Views of the Conejo Valley
- Walking Distance to The Oaks Mall, Janss Marketplace & Dozens of other Retail & Hospitality Amenities
- Fiber Available
- On Site Secured Storage Available
- Immediate Access to the 23 & 101 Freeways
- Up to 3.9/1000 Reserved Covered & Free Surface Parking Available
- Single Reserved Garage Parking Stalls at \$60/ Stall Monthly

| SUITE | SQ. FT. | RATE | DIVISIBLE | AVAILABILITY |
|-------|---------|------------|-----------|--------------|
| 304 | ±4,064 | \$2.65 FSG | No | Immediate |

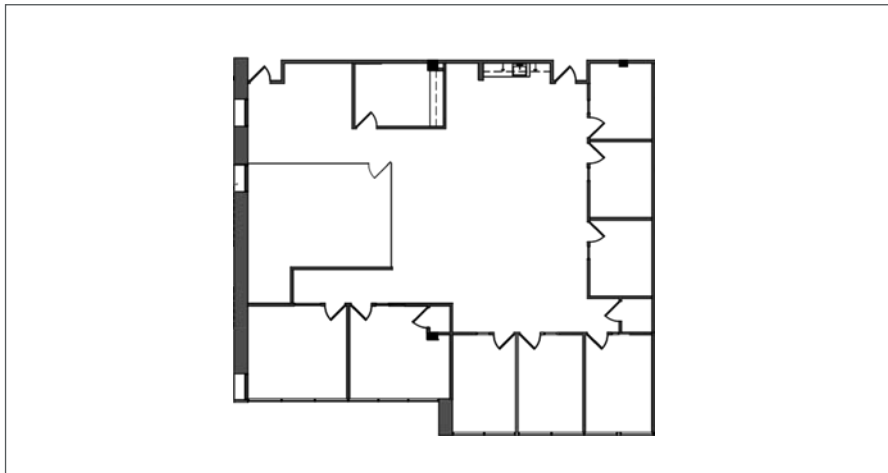


| SUITE | SQ. FT. | RATE | DIVISIBLE | AVAILABILITY |
|-------|---------|------------|-----------|--------------|
| 400 | ±2,743 | \$2.65 FSG | No | 11/01/2026 |



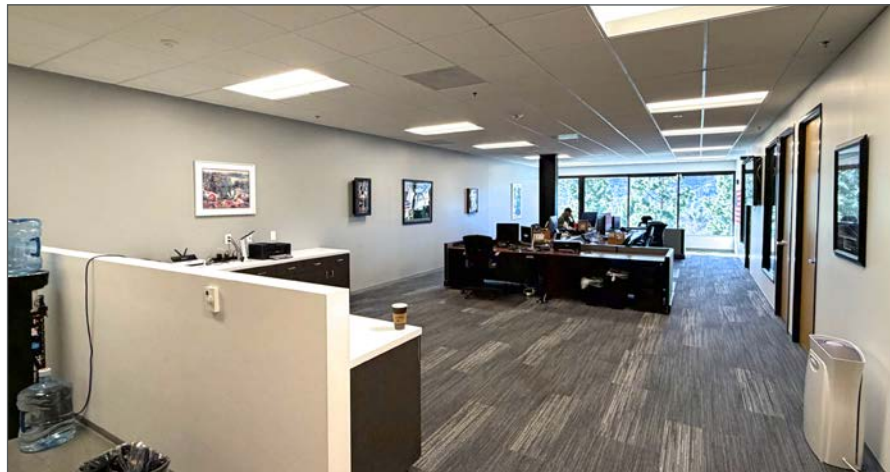
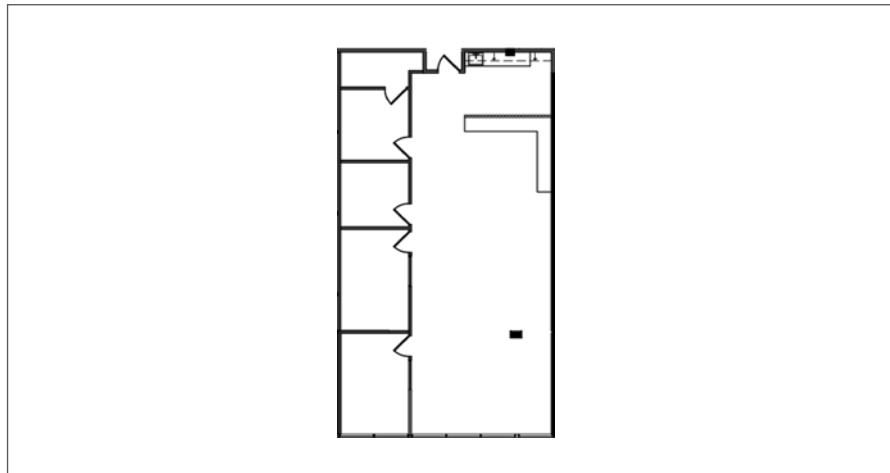
| SUITE | SQ. FT. | RATE | DIVISIBLE | AVAILABILITY |
|-------|---------|------------|-----------|---------------|
| 414* | ±3,691 | Negotiable | No | 90 Day Notice |

*Contiguous with Suite 416 for ±5,626 RSF



| SUITE | SQ. FT. | RATE | DIVISIBLE | AVAILABILITY |
|-------|---------|------------|-----------|--------------|
| 416* | ±1,935 | \$2.65 FSG | No | 03/01/2026 |

*Contiguous with Suite 414 for ±5,626 RSF





VALLEVISTA

515 MARIN STREET | THOUSAND OAKS, CALIFORNIA



For more information please contact:

JARED SMITS

PRINCIPAL

818.444.4986

jsmits@lee-re.com

License ID #01839532

MARK LEONARD

PRINCIPAL

818.449.4414

mleonard@lee-re.com

License ID #01031863



LEE & ASSOCIATES

COMMERCIAL REAL ESTATE SERVICES

Lee & Associates* - LA North/Ventura, Inc.

Corporate ID #01191898

A Member of the Lee & Associates*

Group of Companies

5707 Corsa Ave, Suite 200, Westlake Village, CA 91362

P:818.223.4388 F:818.591.1450

www.leewlv.com