

Available  
Office Space  
in  
Stone Haven  
Business Park

9480  
Utica  
Avenue  
Suite 608

FOR LEASING  
INFORMATION  
CONTACT:

Carol D. Plowman  
BRE License # 00849369  
909-373-2905

Danielle Parker  
BRE License # 01927503  
909-373-2906

3535 Inland Empire Blvd  
Ontario, CA 91764



Corporate ID# 00976995

# STONE HAVEN BUSINESS PARK

10600 - 10608 Trademark Parkway & 9480 Utica Avenue  
Rancho Cucamonga, CA 91730



## Great Business Park Environment:

- Multi-Tenant Office / Flex Spaces
- Building and Monument Signs Available
- Move-In Ready Suites
- Up to 4:1,000 Parking on Select Units
- Easy Access to Interstate 10 and 15 Freeways
- Near LA-Ontario International Airport, Ontario Mills Mall, and Victoria Gardens



Available  
Office Space  
in  
Stone Haven  
Business Park

9480  
Utica  
Avenue  
Suite 608

FOR LEASING  
INFORMATION  
CONTACT:



Corporate ID# 00976995

Carol D. Plowman  
BRE License # 00849369  
909-373-2905

Danielle Parker  
BRE License # 01927503  
909-373-2906

3535 Inland Empire Blvd  
Ontario, CA 91764



# STONE HAVEN BUSINESS PARK



10600 - 10608 Trademark Parkway N.  
9480 Utica Ave.  
Rancho Cucamonga, CA 91730

## AVAILABILITIES:

STREET ADDRESS	SUITE	±SF	RATE / SF	AVAILABILITY
9480 Utica Avenue	608	3,796	\$1.65	6/30/2026

Lease Term:

1 – 5 Years

Tenant Improvements:

Negotiable

CAM Fee:

\$0.13 / SF

# STONE HAVEN

## BUSINESS PARK

9480  
Utica  
Avenue  
Suite 608

FOR LEASING  
INFORMATION  
CONTACT:

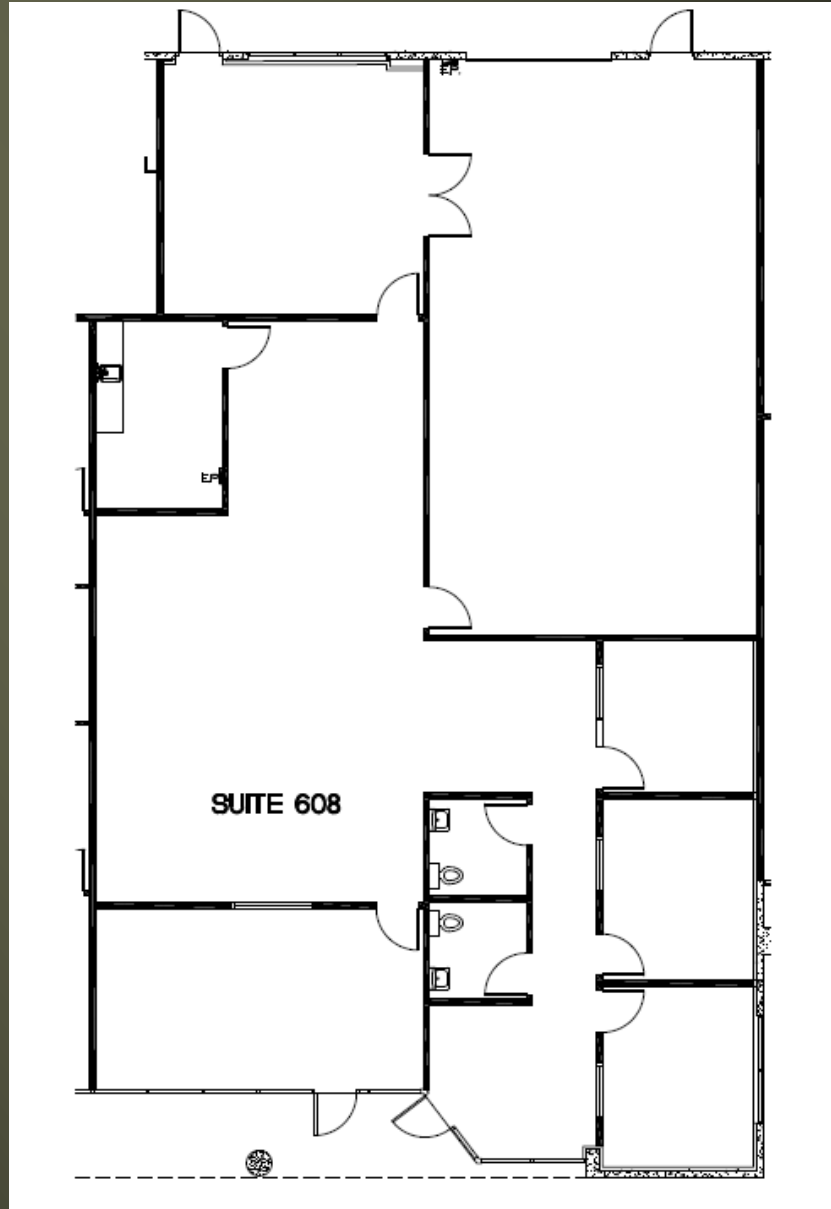


Corporate ID# 00976995

Carol D. Plowman  
BRE License # 00849369  
909-373-2905

Danielle Parker  
BRE License # 01927503  
909-373-2906

3535 Inland Empire Blvd  
Ontario, CA 91764



Suite 608  
± 3,796 SF

