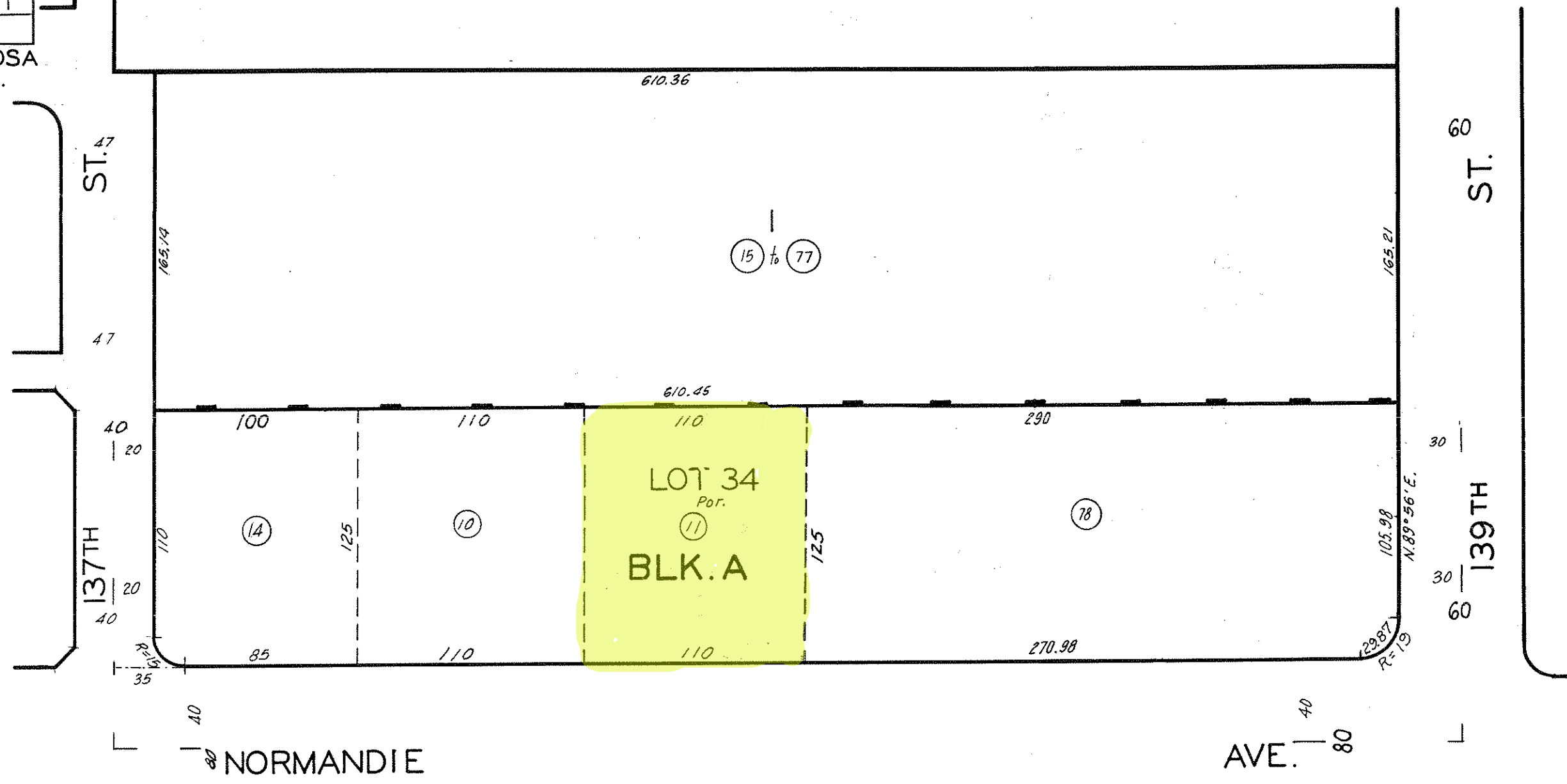


REVISED  
10-4-61  
1-16-63  
681127  
690814009  
710119  
710308  
741024  
760804  
79113321  
791221003  
800902307  
81010740Z  
94101803003001-14

1995

MARIPOSA AVE.



Street lines per M.B. 4-27-28 are considered the lot lines in this tract, although the divisions of some lots are measured from the centerlines of the streets.

\*Diagrammatic depicts approximate dimensions.

The assessment of units in the following Condominium Plans, includes all rights and interests in the common areas as set forth in deeds of record.

Condominium Plan Reference	Common Area		Subdivision	
	Tract No.	Blk.	Lots	Units of Airspace
#735210*	8-1-80	35943	--	1 --
				Sheet 2

CODE 574

CONDOMINIUM TRACT NO. 35943  
M. B. 931 - 5 - 6

STRAWBERRY PARK TRACT  
M. B. 4 - 27 - 28