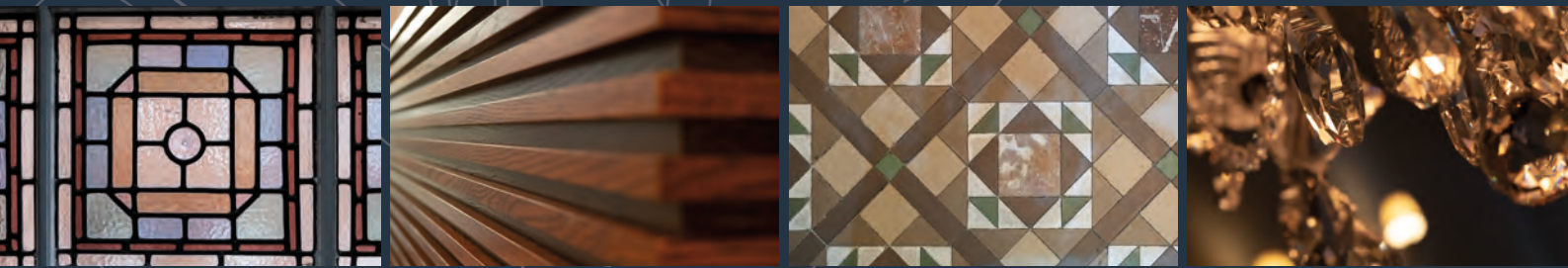




COLET COURT  
HAMMERSMITH

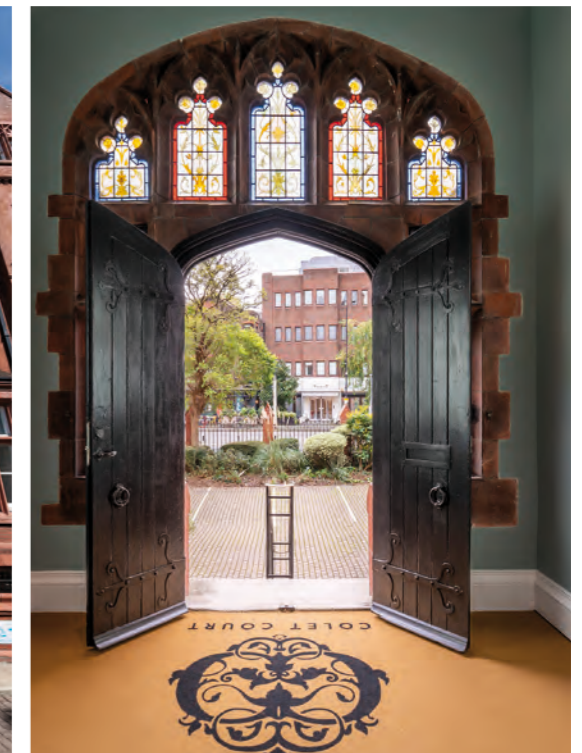
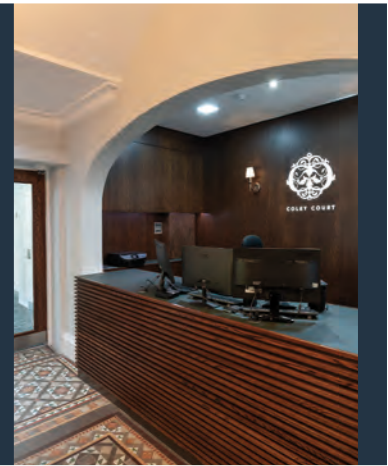


OFFICE SUITES  
WITH PERIOD FEATURES  
TO LET  
WITH CAR PARKING SPACES  
2,414 - 20,641 SQ FT



COLET COURT  
HAMMERSMITH

COLET COURT IS A REFURBISHED OFFICE BUILDING THAT WAS A FORMER 19 CENTURY SCHOOL WITH LISTED STATUS, FEATURING A VARIETY OF DIFFERENT OFFICE STYLES TO SUIT SMALL TO MEDIUM-SIZED BUSINESSES AS WELL AS LARGER COMPANIES.



# HAMMERSMITH HAS PROVEN TO BE THE IDEAL LOCATION TO LIVE AND WORK.

Colet Court is located on the north side of Hammersmith Road close to its junction with Brook Green. The Olympia Exhibition centre is a 5 minutes walk to the east and Hammersmith Broadway is 6 minutes walk to the west.

Colet Court benefits from being located in the heart of Hammersmith, a true transport hub, with access to the circle, Hammersmith & City, District and Piccadilly lines, as well as a wealth of bus routes. Road connectivity from the site is excellent with the A4 and M4 within easy reach, providing access to the West End, M25 and Heathrow Airport.



4  
Underground  
lines just a  
6 minutes walk

12  
miles to  
Heathrow  
Airport

17  
bus routes  
that service  
Hammersmith

14  
minutes to  
the West End



### By Road

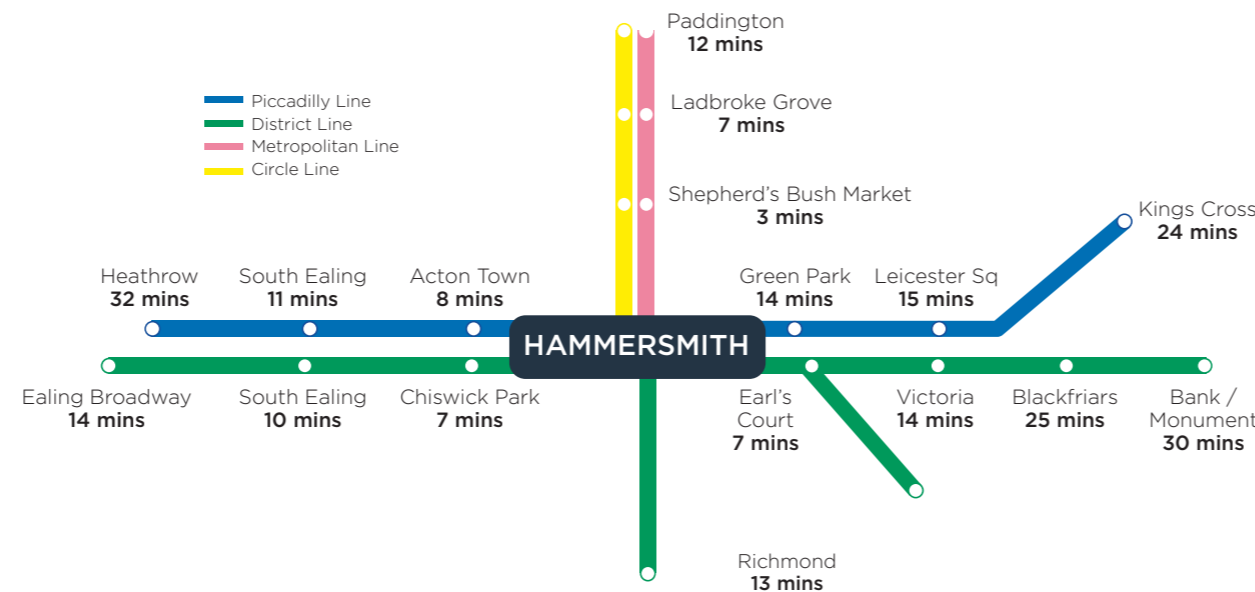
London	5 miles
Heathrow Airport	12 miles
M40 J1a	15 miles
M4 J1	2 miles
M25 J15	12 miles
M3 J1	11 miles

Source: RAC Route Planner

### By Underground

Paddington	12 minutes
Victoria	14 minutes
Green Park	14 minutes
Charing Cross	20 minutes
Waterloo	22 minutes
King's Cross	24 minutes
Heathrow Airport	32 minutes
Liverpool Street	32 minutes

Source: London Underground



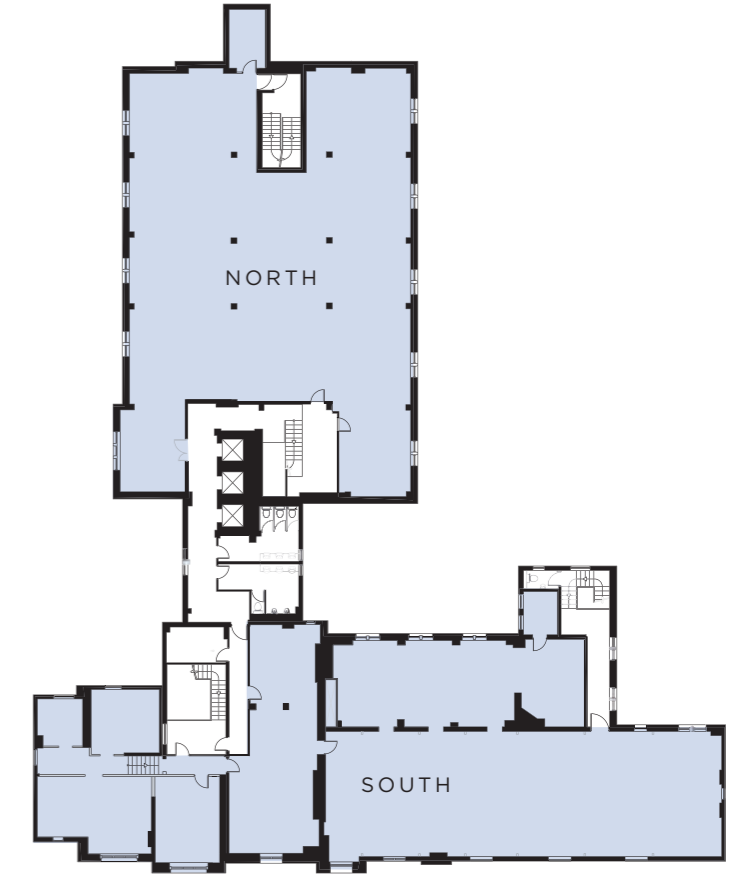
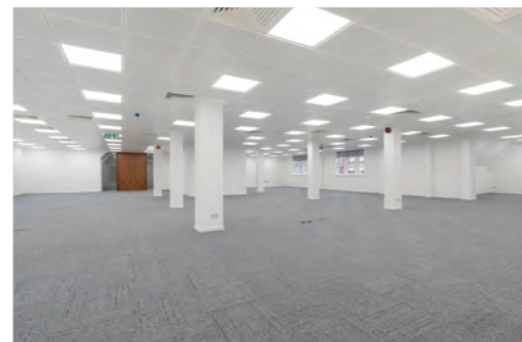
NEWLY REFURBISHED TO PROVIDE AN IMPRESSIVE SPECIFICATION



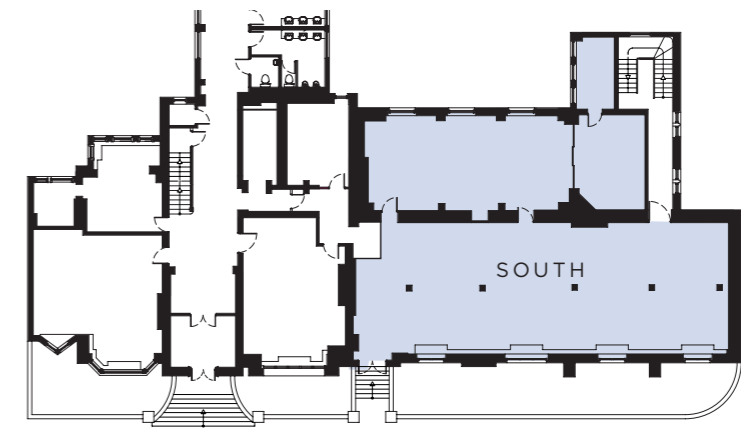
OFFICES SUITES AVAILABLE FROM 2,414 SQ FT

-   
Air conditioning
-   
Concierge style reception
-   
Fitted kitchens
-   
Floor to ceiling height 2.7m
-   
Energy efficient LED lighting
-   
Character Building
-   
EPC-D
-   
Three passenger lifts
-   
Showers with changing
-   
Onsite car parking

Second floor - North	447.5 sq m	4,818 sq ft
Second floor - South	382.1 sq m	4,114 sq ft
First floor - North	482.6 sq m	5,195 sq ft
First floor - South	380.8 sq m	4,100 sq ft
Ground floor - South	224.2 sq m	2,414 sq ft
<b>Total</b>	<b>1,917.5 sq m</b>	<b>20,641 sq ft</b>



FIRST & SECOND FLOOR PLAN



GROUND FLOOR PLAN





## COLET COURT

100 HAMMERSMITH ROAD  
LONDON W6 7JP

### TERMS

New FRI lease(s) for a term by arrangement.

### VIEWING

For further information or to arrange a viewing,  
please contact the joint sole agents.



**frost  
meadowcroft**  
**020 8748 1200**

Simon Knight  
[simonknight@brayfoxsmith.com](mailto:simonknight@brayfoxsmith.com)  
07818 012 419

Clare Lane  
[clarelane@brayfoxsmith.com](mailto:clarelane@brayfoxsmith.com)  
07866 622 013

Shaun Wolfe  
[swolfe@frostmeadowcroft.com](mailto:swolfe@frostmeadowcroft.com)  
07900 911135

Jack Realey  
[jrealey@frostmeadowcroft.com](mailto:jrealey@frostmeadowcroft.com)  
07879 228 991