

island

USE LESS.
DO MORE.

John Dalton St
Manchester



Welcome to Island

A unique leisure opportunity in the heart of Manchester's Civic Quarter with space available up to 5,350 sq ft.

Located within a new home for forward-thinking, professional services businesses who care about people, place and planet. Available from 2024.



Location



Location

Our location is unbeatable. We're in the heart of Manchester, surrounded by public squares and iconic buildings, and just minutes from everything the city centre has to offer.

Manchester Victoria and Piccadilly train stations are 10 minutes away by foot, St Peter's Square and Market Street Metrolink interchanges are 5 minutes.



- | | | |
|---|--------------------------------|--|
| 1 Spinningfields | 5 King Street retail core | 9 St Ann's Square |
| 2 Northern Quarter | 6 St Peter's Square | 10 Corn Exchange restaurants and leisure |
| 3 Albert Square | 7 Manchester Art Gallery | |
| 4 Manchester Central Convention Complex | 8 The Edwardian Radisson Hotel | |

Branding opportunities

Fascia signage

Window signage

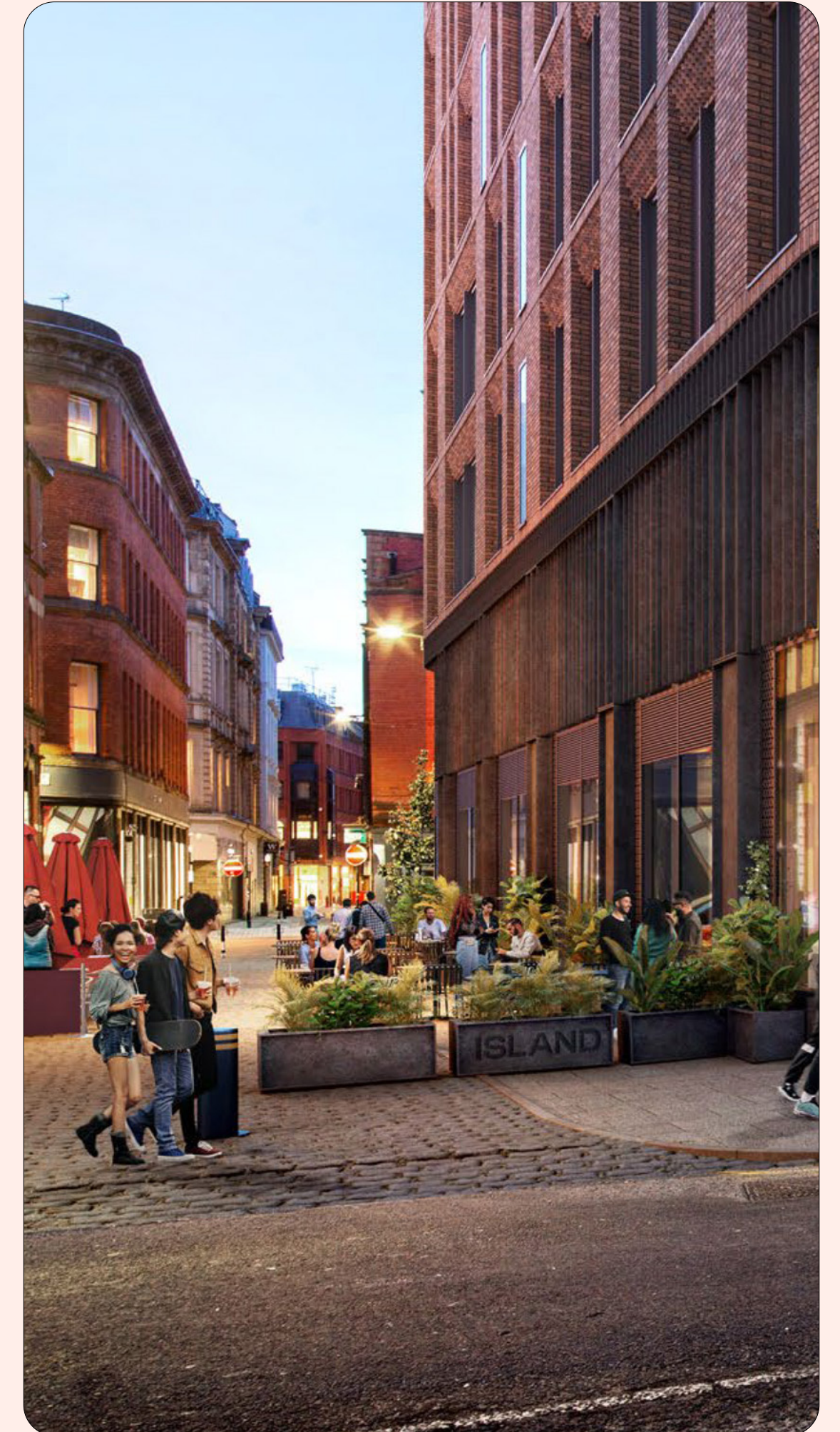
Outdoor space for occupiers

Moveable outdoor signage

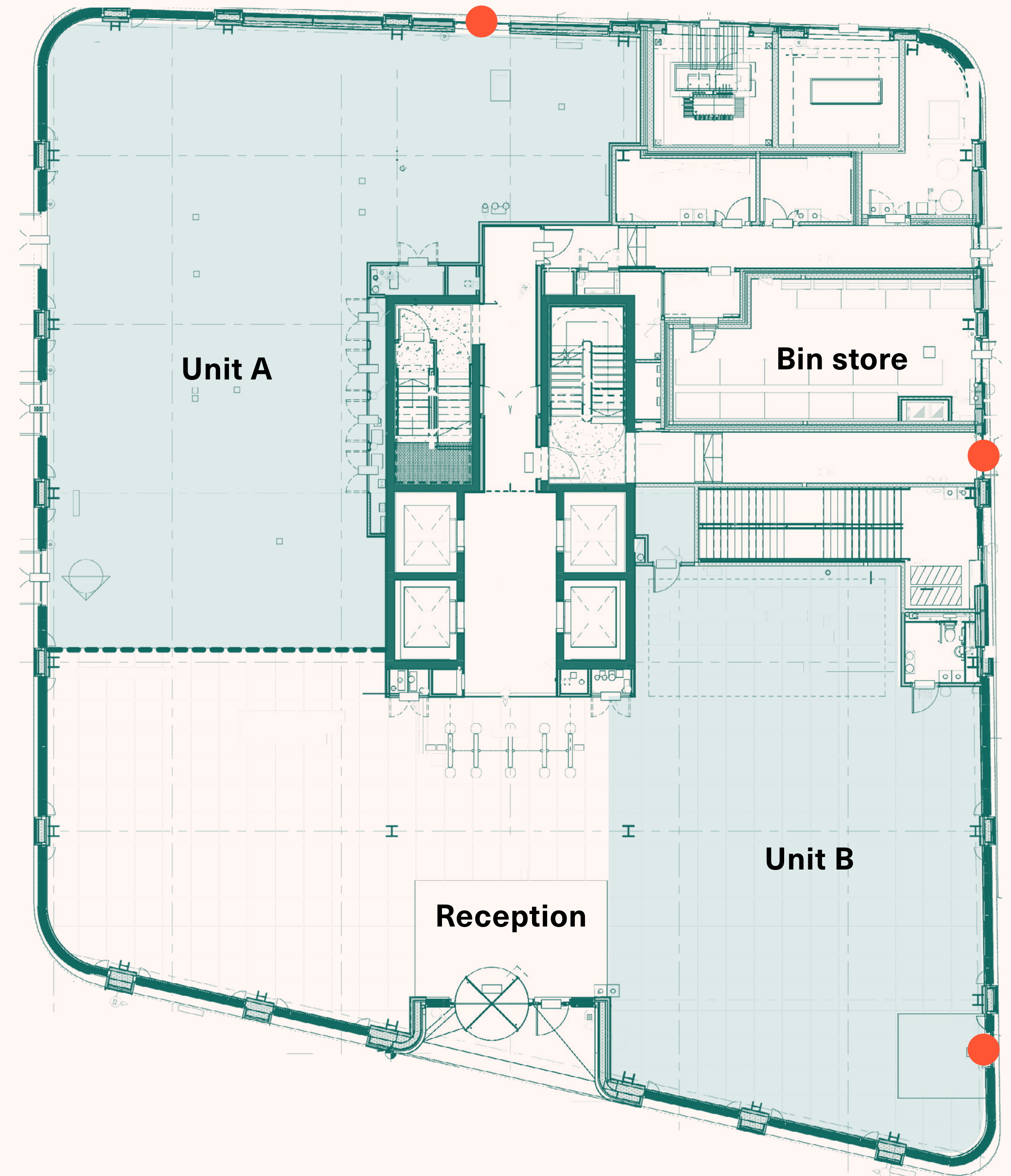
Planter signage



People focused spaces



Unit information



Servicing locations



Unit areas	M ²	Ft ²
Unit A	469M ²	5027Ft ²
Unit B	252M ²	2713Ft ²

Contact



Nicola Harrington
Director - Retail & Leisure
+44 (0)161 461 1616
+44 (0)7971 183 165
nicola@sixteenrealestate.com

Alex Haigh
+44 (0)7737 910 932
alex@sixteenrealestate.com

islandmcr.co.uk



island

H B D
PART OF HENRY BOOT GROUP

