



129, OXFORD ST.
SOHO
W1D 2HZ

FRAMEWORKS





COST-EFFECTIVE WORKSPACE ON OXFORD STREET

CUSTOM-MADE HQ FOR £350/DESK

DESIGN-LED WORKSPACE FOR
SIGNIFICANTLY LESS COST

ENTIRE FLOORS AVAILABLE WITHIN
WALKING DISTANCE OF OXFORD CIRCUS
AND TOTTENHAM COURT RD.



SUMMARY

Frameworks Oxford Street provides its members with a beautifully designed and high-quality work environment at a significantly more cost-effective price. With Oxford Street and Soho on its doorstep, the building boasts one of London's most sought-after postcodes, offering businesses excellent transport links and easy access to fantastic bars and restaurants.

DETAIL

Each office can accommodate up to 18 desks and features a private kitchenette, meeting room, WC and breakout space. Our serviced workspaces are all-inclusive with no hidden fees. Pricing includes rent, business rates and service charges along with the following facilities:

- Fully furnished offices
- Private kitchenette
- Private meeting room
- Ultra-fast internet
- Air conditioning
- Daily cleaning
- Roof terrace
- 24/7 access

AVAILABILITY

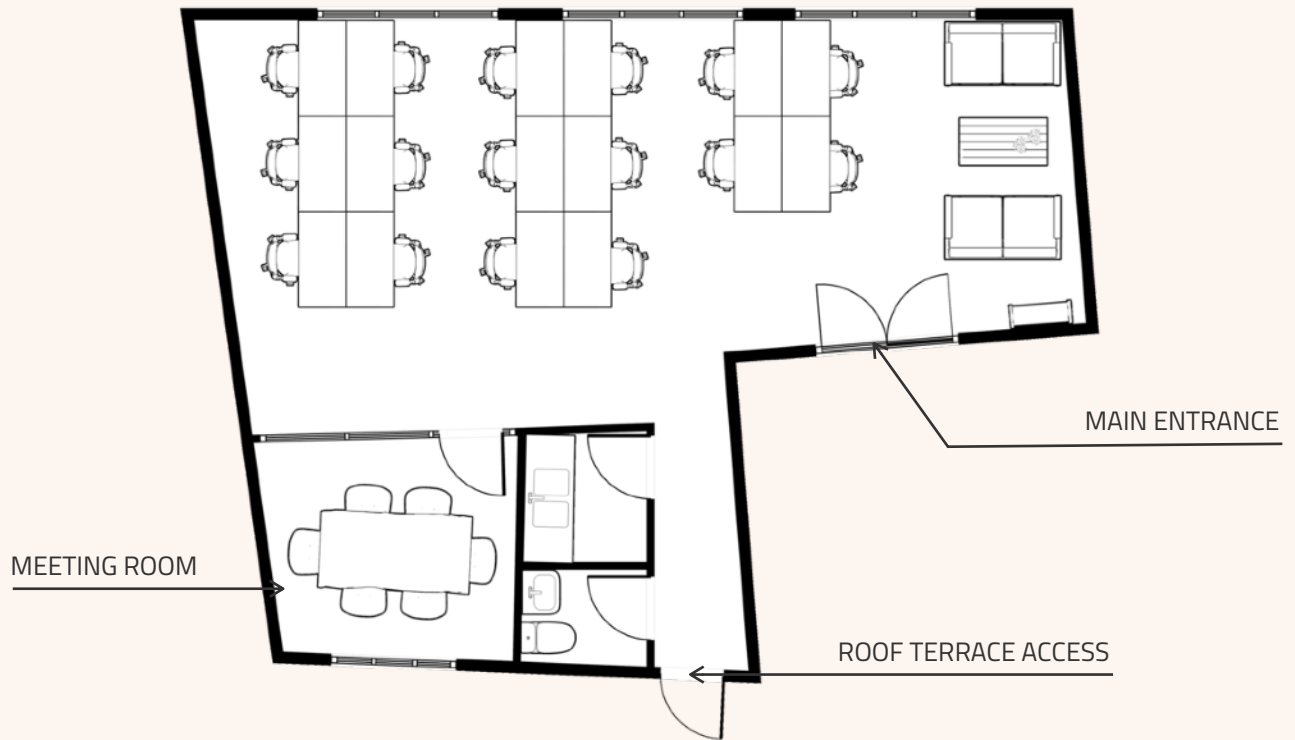
Our current availability is listed opposite. Desk numbers are indicative and can vary depending on client specification. See floor plan on the following page for more information.

Office	sqft	Desks	£/m + VAT
1	658	~ 16	-
2	646	~ 16	£8,000
3	648	~ 16	-
4	589	~ 12	£5,000



FLOORPLAN

658 SQFT
FIRST FLOOR (SHOWN)



- Layout shown features 16 desks and a meeting room.
- Space can be customised to suit client requirements.

LOCATION

The building is located between Tottenham Court Road and Oxford Circus tube stations, with mainline stations only a few stops away.

Members can benefit from being based near a wide range of brilliant eateries, bars and shops.

- ⊖ Oxford St
- ⊖ Tottenham Court Rd



CONTACT

For more details or to book a tour, please get in touch with our sales team via the following details:

P : 0203 302 6775
E : sales@frameworks.space
W : www.frameworks.space