

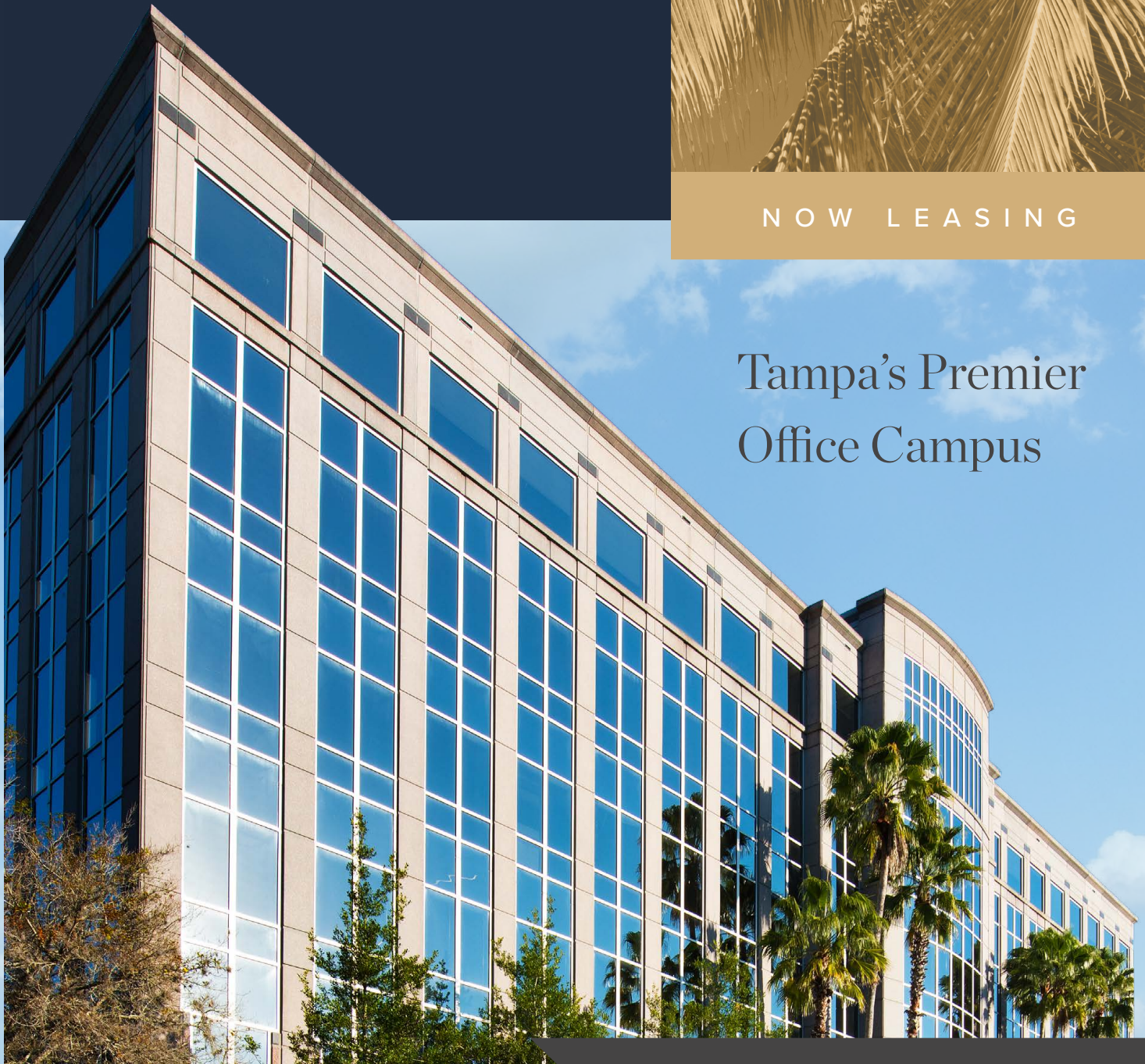


HIDDEN RIVER



NOW LEASING

Tampa's Premier
Office Campus



HIDDEN RIVER CORPORATE PARK | TAMPA, FL 33637

CBRE

Connecting With a Landlord that is Your Partner



RECENTLY COMPLETED FITNESS/WELLNESS CENTER
WITH PELOTON STUDIO

NATURE'S TABLE ON-SITE RESTAURANT

FLOOR TO CEILING VIEWS + ABUNDANT NATURAL LIGHT

**You May Have Never
Experienced an Owner
Like This** ———

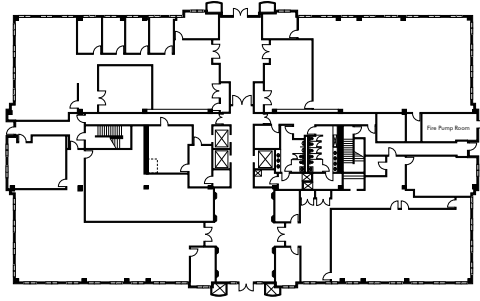
Experience Ownership that is passionate about their buildings. They work continuously to improve their buildings aesthetically and functionally.

Our commitment for each Hidden River building is to bring a focus to improvement, a respect for quality design and craftsmanship, and quality customer service coupled with responsive management.

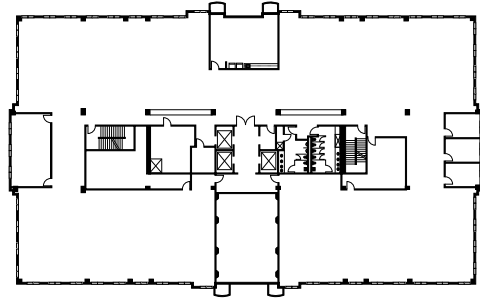
Farley White is committed to long term relationships by working with their customers and brokers to make workplace environments that are distinctive and productive. Our management team is engaged from start to finish in every lease transaction.

HIDDEN RIVER I

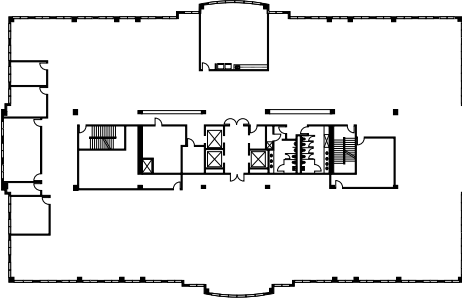
8800 Grand Oak Circle
Tampa, FL 33637



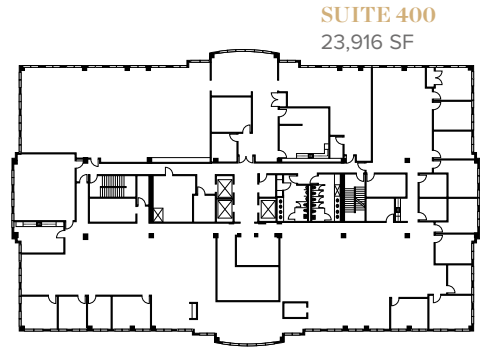
SUITE 100
18,358 SF



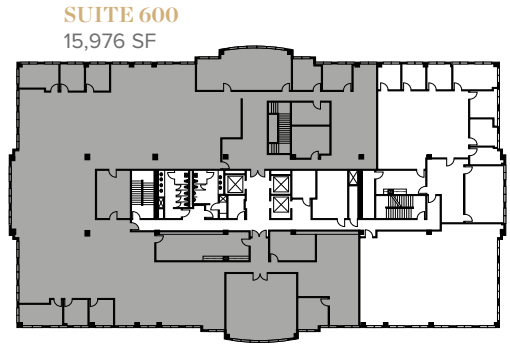
SUITE 200
22,106 SF



SUITE 300
24,165 SF



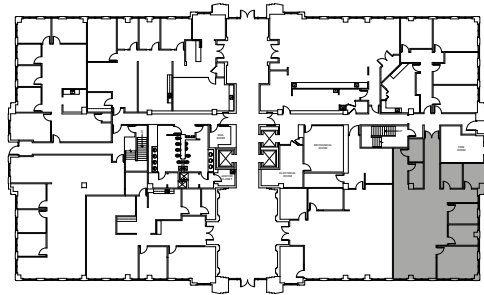
SUITE 400
23,916 SF



SUITE 600
15,976 SF

HIDDEN RIVER II

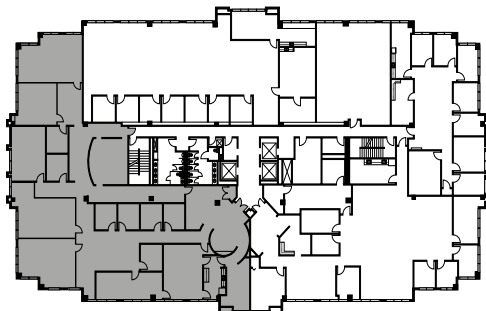
14025 Riveredge Drive
Tampa, FL 33637



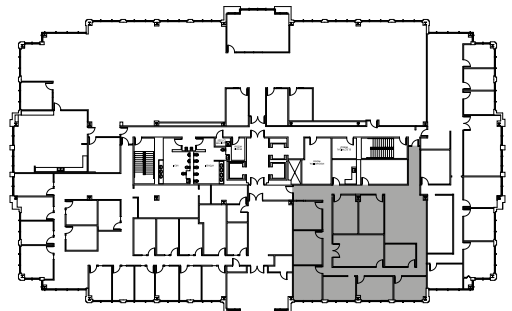
SUITE 105
2,510 SF

HIDDEN RIVER III

14055 Riveredge Drive
Tampa, FL 33637



SUITE 460
9,231 SF



SUITE 300
4,184 SF



HIDDEN RIVER III
14055 Riveredge Drive

HIDDEN RIVER II
14025 Riveredge Drive

HIDDEN RIVER I
8800 Grand Oak Circle



VIEW TOUR

Experience the Difference

EXCEPTIONAL QUALITY CLASS A++ OFFICE PARK

- Highest quality master-planned office park - considered one of the top corporate parks in Tampa
- Recognized with NAIOP's Design Honor Award for exceptional design and development

A TRUSTED LOCATION FOR SUCCESS

- 15 minutes to downtown Tampa
- 7 minutes away from University of South Florida
- Immediate proximity to all major interstate systems
- Two million people live within a 15 mile radius
- Hidden River Corporate Park includes 513 master-planned acres along the Hillsborough River and features canopied walking/jogging paths surrounded by oak trees.

Immerse
in the
Experience

For More Information

ROXANNE KEMPH

Senior Vice President
T +1 813 286 7700
roxanne.kemph@cbre.com

KELLEY MATHESON

First Vice President
T +1 813 273 8489
kelley.matheson@cbre.com

www.cbre.us/hiddenrivercorporate

CBRE

FARLEY | WHITE
INTERESTS

CBRE, Inc. | Licensed Real Estate Broker

© 2023 CBRE, Inc. This information has been obtained from sources believed reliable. We have not verified it and make no guarantee, warranty or representation about it. Any projections, opinions, assumptions or estimates used are for example only and do not represent the current or future performance of the property. You and your advisors should conduct a careful, independent investigation of the property to determine to your satisfaction the suitability of the property for your needs. Photos herein are the property of their respective owners and use of these images without the express written consent of the owner is prohibited. CBRE and the CBRE logo are service marks of CBRE, Inc. and/or its affiliated or related companies in the United States and other countries. All other marks displayed on this document are the property of their respective owners.