

# 2650 Napa Valley Corporate Dr. Napa, CA



## Office & Warehouse Space for Lease ~ ±11,608 SF

### Offices

- Five (5) Smaller Private Offices
- Three (3) Larger Private Offices
- Two (2) Large Office Cubicle Areas
- Conference Room
- Training Room w/ Skylight
- Breakroom
- Three (3) Bathrooms

### Warehouse - ±3,000 SF

- Roll-Up Door
- 18'-20' Ceiling Height

### Mezzanine/Bonus Area- ±803 SF

### Features

- PG&E Separately Metered
- Good Parking
- Near Lodging

\$1.10 SF/Mo. NNN ~ Zoning: Industrial Park Area-A (IP-A)



**Michael Moffett**

License #00946472

707.479.1976

mmoffett@cnapavalley.com

1775 Lincoln Ave.  
Napa, CA 94558

**Cathy D'Angelo Holmes**

License #01355085

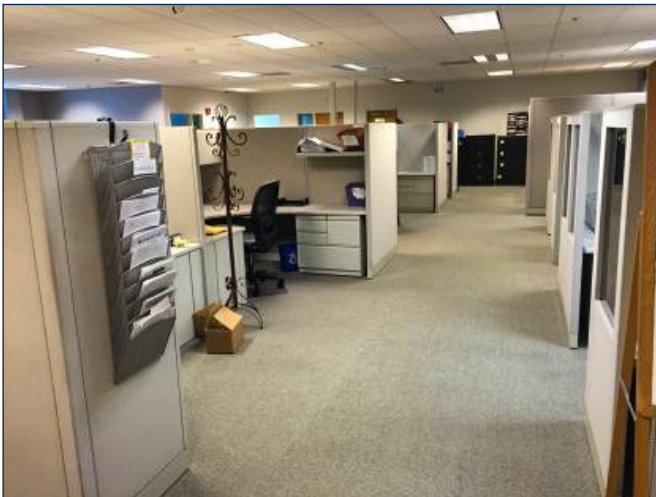
707.304.3338

cholmes@cnapavalley.com



# 2650 Napa Valley Corporate Dr. Napa, CA

## PHOTOS



**Michael Moffett**

License #00946472

707.479.1976

[mmoffett@cbnapavalley.com](mailto:mmoffett@cbnapavalley.com)

1775 Lincoln Ave.  
Napa, CA 94558

**Cathy D'Angelo Holmes**

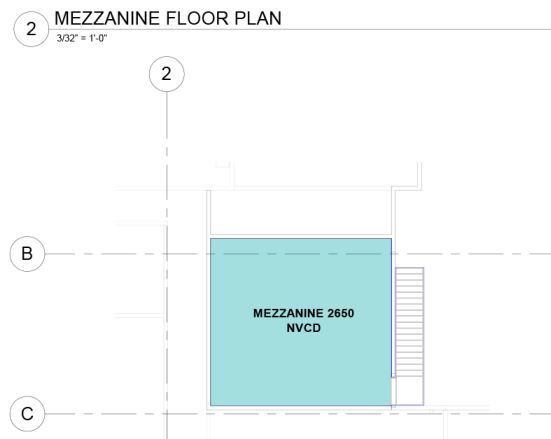
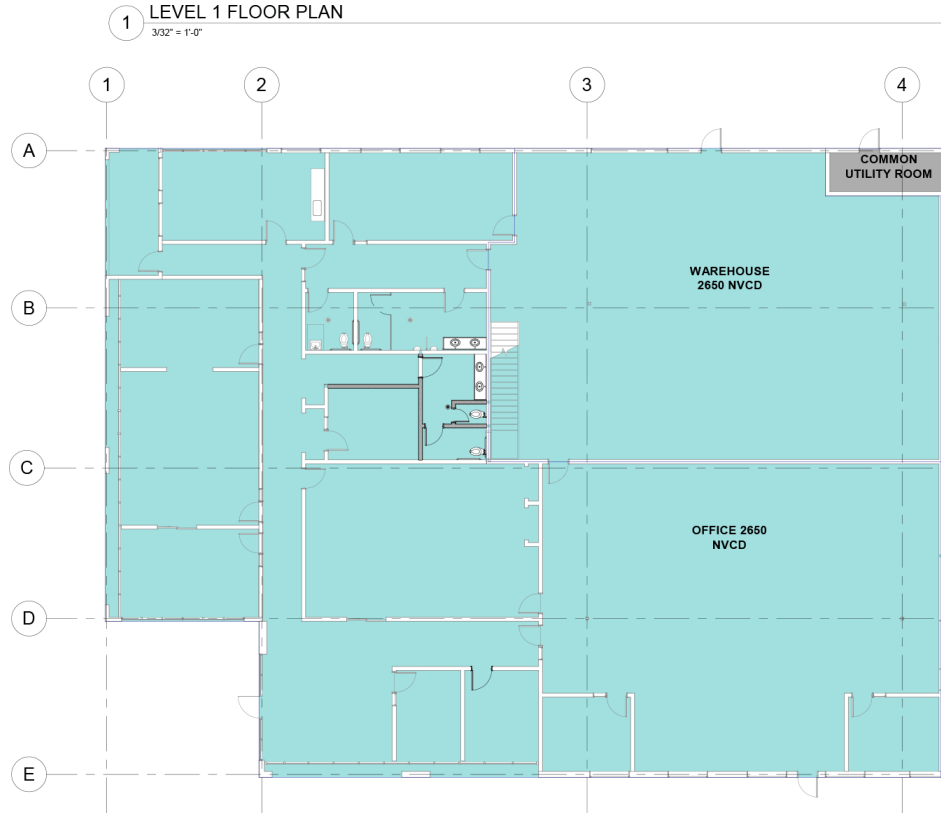
License #01355085

707.304.3338

[cholmes@cbnapavalley.com](mailto:cholmes@cbnapavalley.com)



# 2650 Napa Valley Corporate Dr. Napa, CA



**Michael Moffett**  
License #00946472  
707.479.1976  
mmoffett@cnapavalley.com

1775 Lincoln Ave.  
Napa, CA 94558

**Cathy D'Angelo Holmes**

License #01355085  
707.304.3338  
cholmes@cnapavalley.com

