

TAHARI  
REALTY

**218 EAST  
116TH STREET**

**RETAIL SPACE FOR LEASE**



**INQUIRE FOR PRICE**

**TAHARI  
REALTY**

**128 EAST  
116<sup>TH</sup> STREET**

**RETAIL SPACE FOR LEASE**

**CONTACT**

**ARYEY VILINSKY**

**917-450-9773**

**aryeh@taharirealty.com**



**TABLE OF CONTENTS**

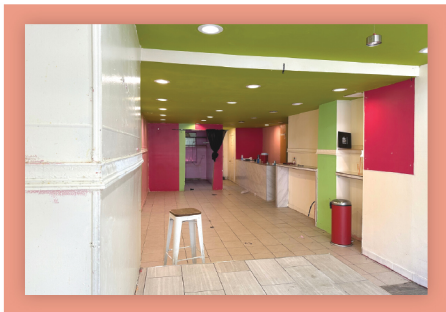
Overview and Highlights .....	2
About the Neighborhood .....	3
Area Map .....	4
Property Photos .....	5

# OVERVIEW

Tahari Realty is pleased to present 218 E 116th Street, a fully built-out retail space for lease in the lively East Harlem neighborhood of Manhattan. The space is 760 square feet and has 17 feet of frontage along East 116th Street. The space can be vented, includes a full basement, and a beautiful backyard.

# HIGHLIGHTS

- 760 square feet
- 17 feet of frontage
- High foot traffic
- Space can be vented
- Full Basement
- Beautiful Backyard



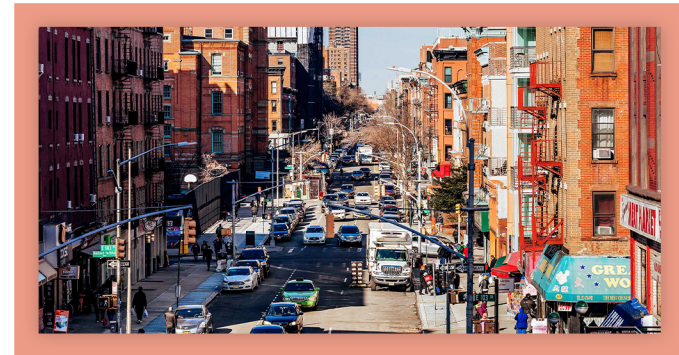
# EAST HARLEM

East Harlem, also known as El Barrio or Spanish Harlem, is a neighborhood located in the northeastern part of Manhattan, New York City. It is bounded by the East River to the east, Fifth Avenue to the west, 96th Street to the south, and Harlem River to the north. East Harlem has a rich history and a vibrant cultural identity shaped by its diverse population.

East Harlem is known for its lively atmosphere and cultural institutions. One of the neighborhood's landmarks is the famous Graffiti Hall of Fame, located at 106th Street and Park Avenue, which showcases vibrant street art. There are also several community murals throughout the area that reflect the neighborhood's cultural heritage.

East Harlem's food scene reflects its diverse population, offering a variety of cuisines. The area is known for its delicious Puerto Rican, Mexican, Dominican, and other Latin American eateries. Some popular spots include local bodegas, taquerias, and authentic Latin American restaurants.

In terms of transportation, East Harlem is well-connected to the rest of Manhattan and beyond. It is served by multiple subway lines, including the 4, 5, and 6 trains, which provide easy access to other parts of the city.



# RETAIL MAP

# PHOTOS



# 218 EAST 116<sup>TH</sup> ST

---

## CONTACT

**ARYEH VILINSKY**

**917-450-9773**

**[aryeh@taharirealty.com](mailto:aryeh@taharirealty.com)**

**[www.taharirealty.com](http://www.taharirealty.com)**

---

**TAHARI**  
REALTY

**632 Broadway FL 5  
New York, NY 10012**

---