


Office Space
For Lease
15,336 SF

3812 COCONUT PALM DRIVE

**SKYLIGHT:
YOUR BRIGHT FUTURE
IN TAMPA**

Prime office space in East Tampa



 3812 Coconut Palm Drive
Tampa, FL 33619

CBRE


SKYLIGHT

EXCEPTIONAL OFFICE SPACE DESIGNED FOR SUCCESS



Prime Location

Strategically located within Sabal Park, a prestigious corporate park in Tampa's thriving I-75 corridor



Stunning Aesthetics

Enjoy a productive and inspiring work environment with glass and natural light throughout the building



Exceptional Accessibility

Boasts close proximity to major transportation arteries: Interstate 4, Interstate 75, and US 301, making commutes and travel a breeze



Professional Environment

Situated in a well-maintained and professionally managed office park, surrounded by established businesses



Convenient Commute

Just a short 15-minute drive to vibrant Downtown Tampa



Parking

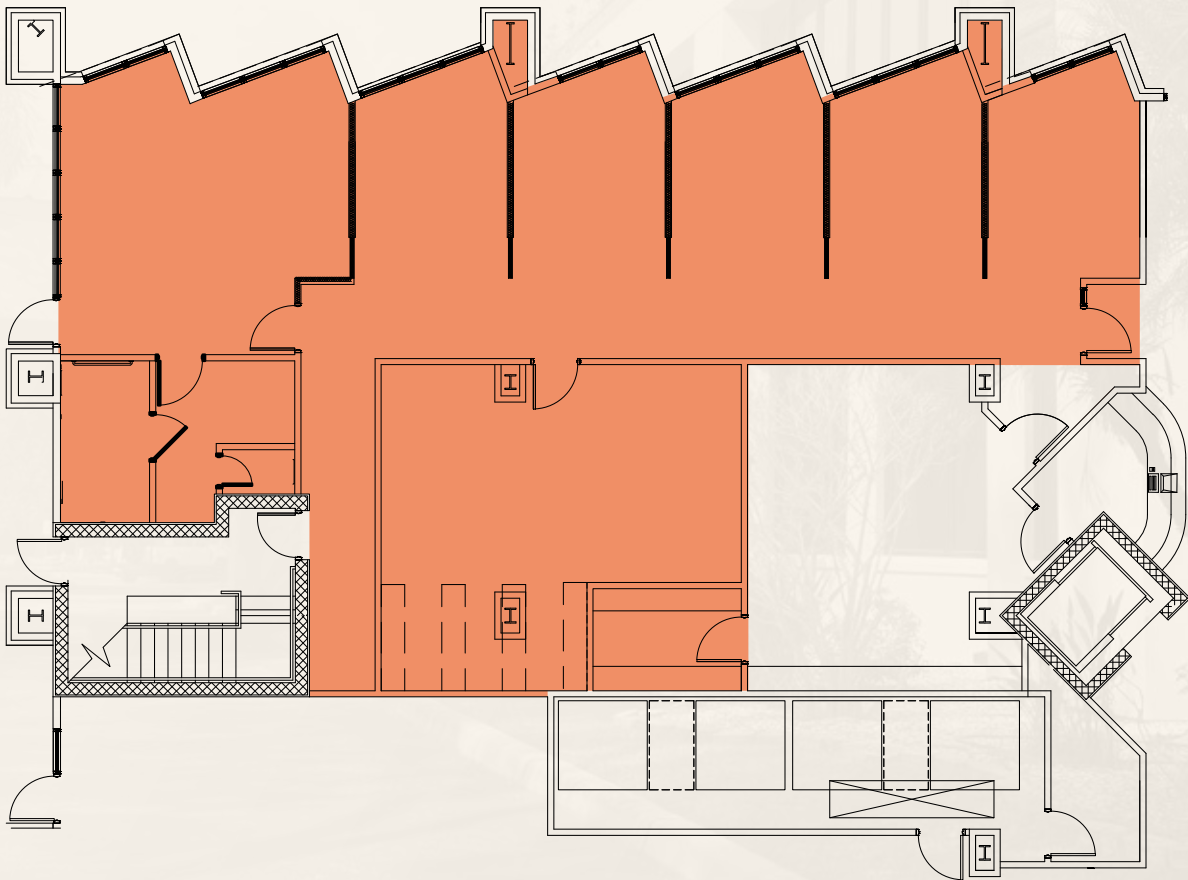
Ample 4.5 / 1,000 Parking



FLOOR PLAN SUITE 175

A Functional & Flexible Workspace.
Inside the Office of Tomorrow.

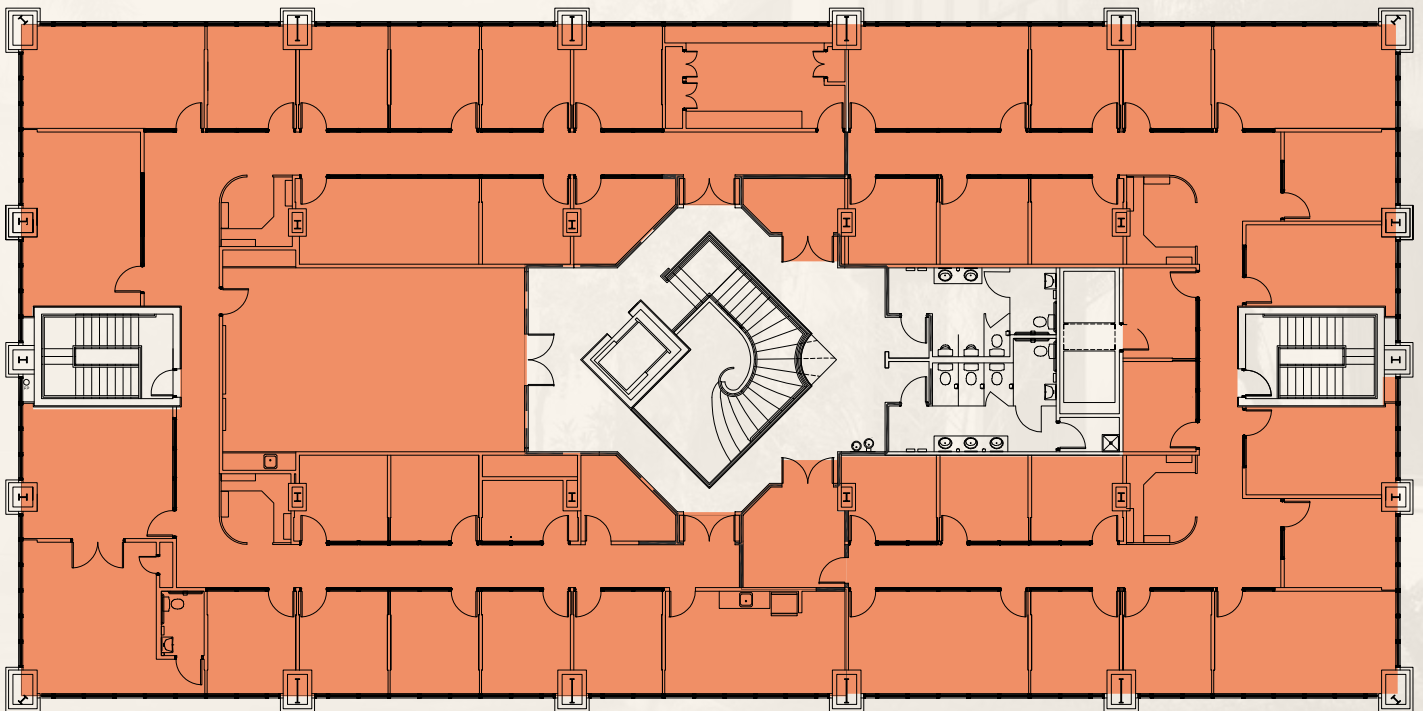
2,659 SF



FLOOR PLAN 2ND FLOOR

Available July 2026

12,677 SF



MAP YOUR SUCCESS



Prime Location

Strategically located within Sabal Park, a prestigious corporate park in Tampa's thriving I-75 corridor



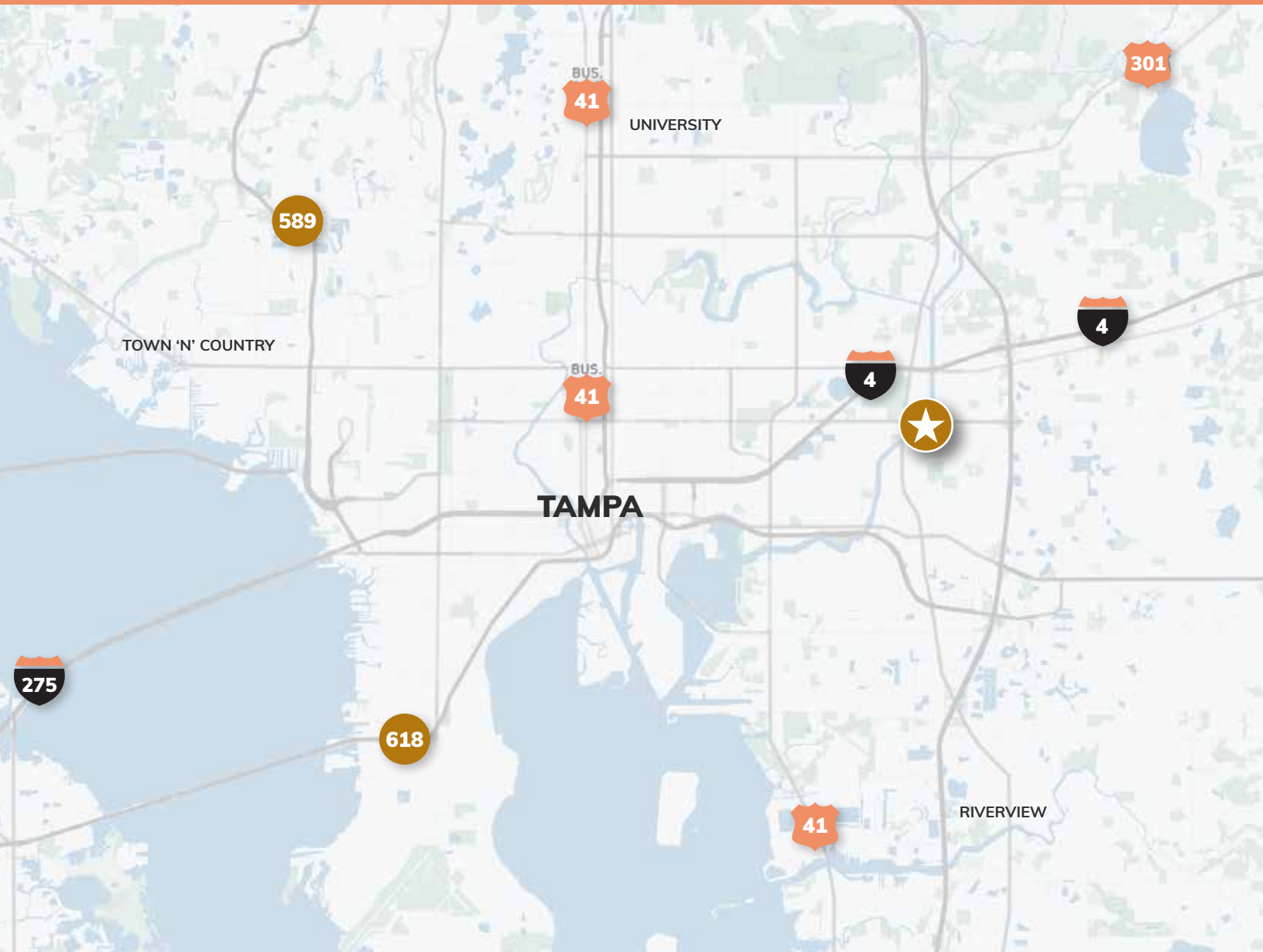
Exceptional Accessibility

Boasts close proximity to major transportation arteries: Interstate 4, Interstate 75, and US 301, making commutes and travel a breeze



Convenient Commute

Just a short 15-minute drive to the vibrant Downtown Tampa






3812 Coconut Palm Drive offers a prime location and modern amenities to help your business flourish. Enjoy ample parking, stunning views, convenient access to major roadways and a professional environment designed for success.

Kyle Chaikin

First Vice President
+1 813 273 8433
kyle.chaikin@cbre.com

Nicole Grzywacz

Sr. Transaction Manager
+1 813 273 8445
nicole.grzywacz@cbre.com

 3812 Coconut Palm Drive
Tampa, FL 33619

CBRE


SKYLIGHT