

12 CORPORATE PLAZA

NEWPORT BEACH, CA

NOW LEASING

Creative Office Space

RW REDWOOD WEST

WELCOME TO

12 CORPORATE PLAZA

- 17,985 SF, 2-Story office building remodeled in 2012
- Prime frontage off Civic Center Drive and Avocado Ave
- Exclusive Corporate Plaza address
- Ample free surface parking
- Common outdoor kitchen, balcony with panoramic ocean views, fireplace, seating area and showers
- Convenient access to 55, 405 and 73 freeways
- Walking distance to Fashion Island, Civic Center and Corona Del Mar Plaza





BALBOA ISLAND

LIDO MARINA VILLAGE

HOAG HOSPITAL

NEWPORT DUNES RESORT

NEWPORT BEACH COUNTRY CLUB

FASHION ISLAND

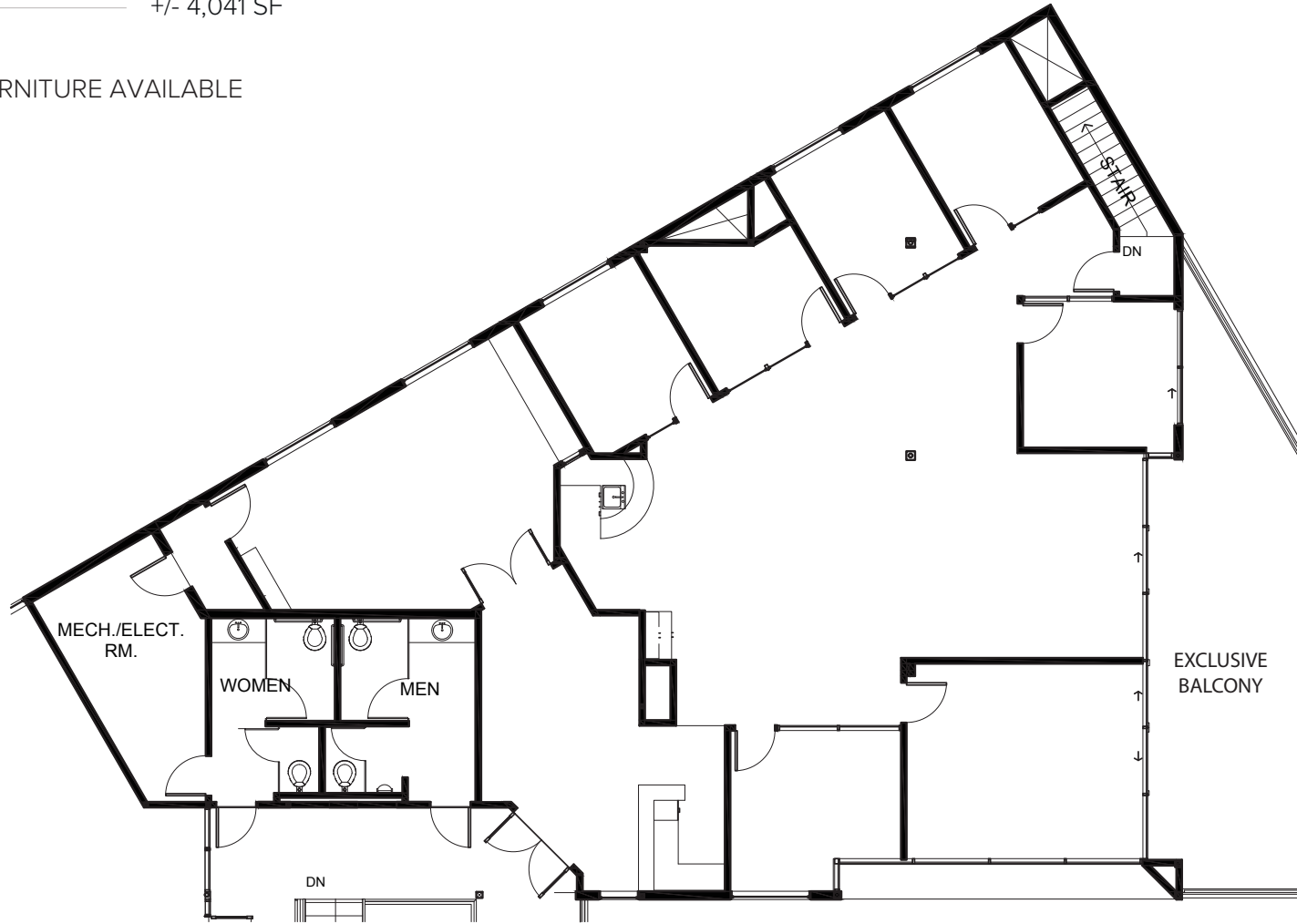
12 CORPORATE PLAZA

NEWPORT BEACH CIVIC CENTER

Suite 200

+/- 4,041 SF

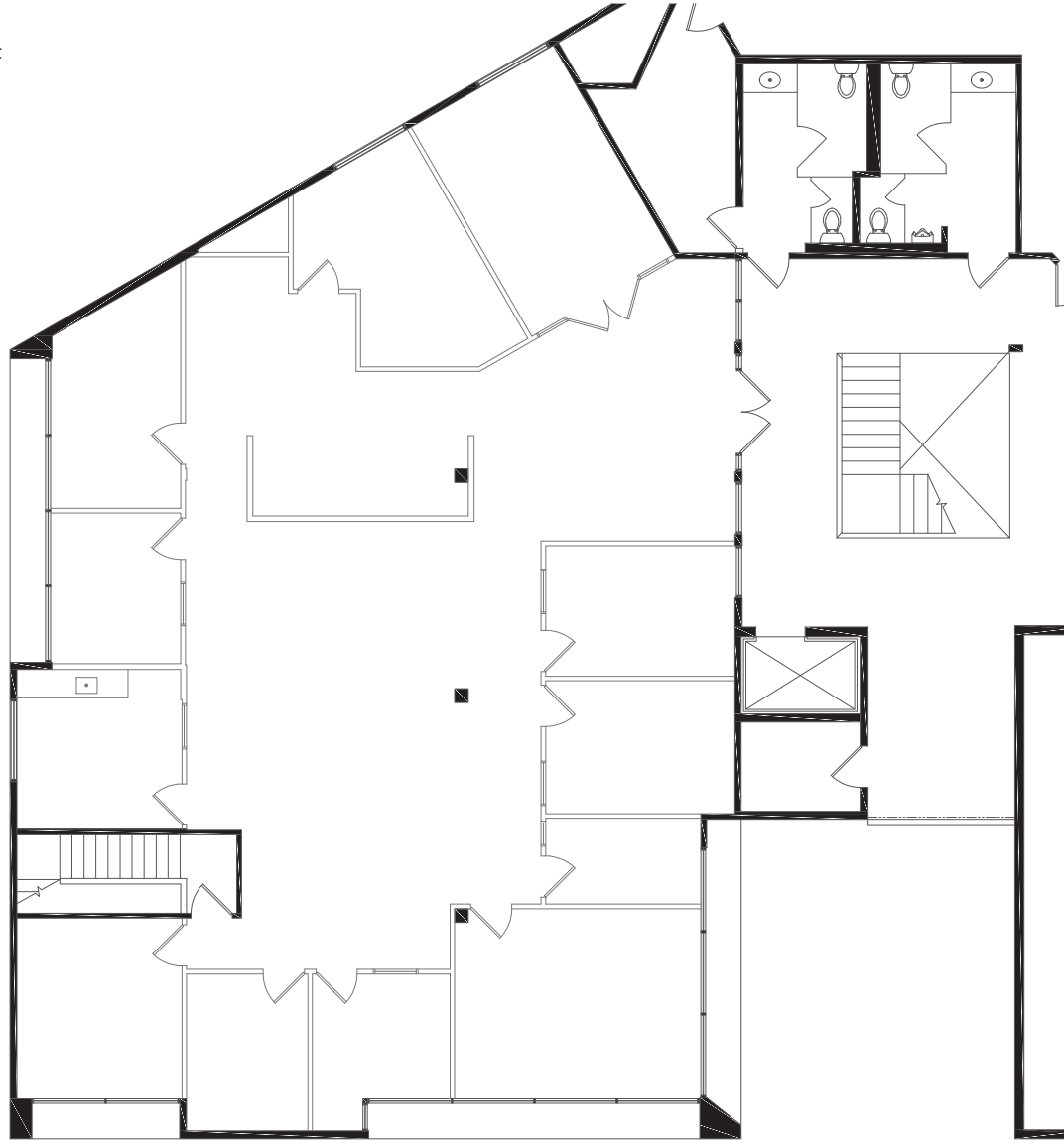
FURNITURE AVAILABLE



OCEAN AND CATALINA VIEWS

Suite 250

+/- 4,157 SF



12 CORPORATE PLAZA

NEWPORT BEACH, CA



For more information, please contact:

John Pomer

949.945.2649

john@redwoodwest.com

Lic. #01440689

Ben Gott

949.945.2648

ben@redwoodwest.com

Lic. #01724507

Christian Heffelman

949.945.2645

christian@redwoodwest.com

Lic. #02101426

NOW LEASING

Creative Office Space

RW | REDWOOD
WEST

The information contained in this document has been obtained from sources believed reliable. While Redwood West does not doubt its accuracy, Redwood West has not verified it and makes no guarantee, warranty or representation about it. It is your responsibility to independently confirm its accuracy and completeness. You and your advisors should conduct a careful, independent investigation of the property to determine your satisfaction to the suitability of the property for your needs.