

Medical Village at Lake Nona

1,170 SF

10920 Moss Park Rd
Suite 112
Orlando, FL 32832

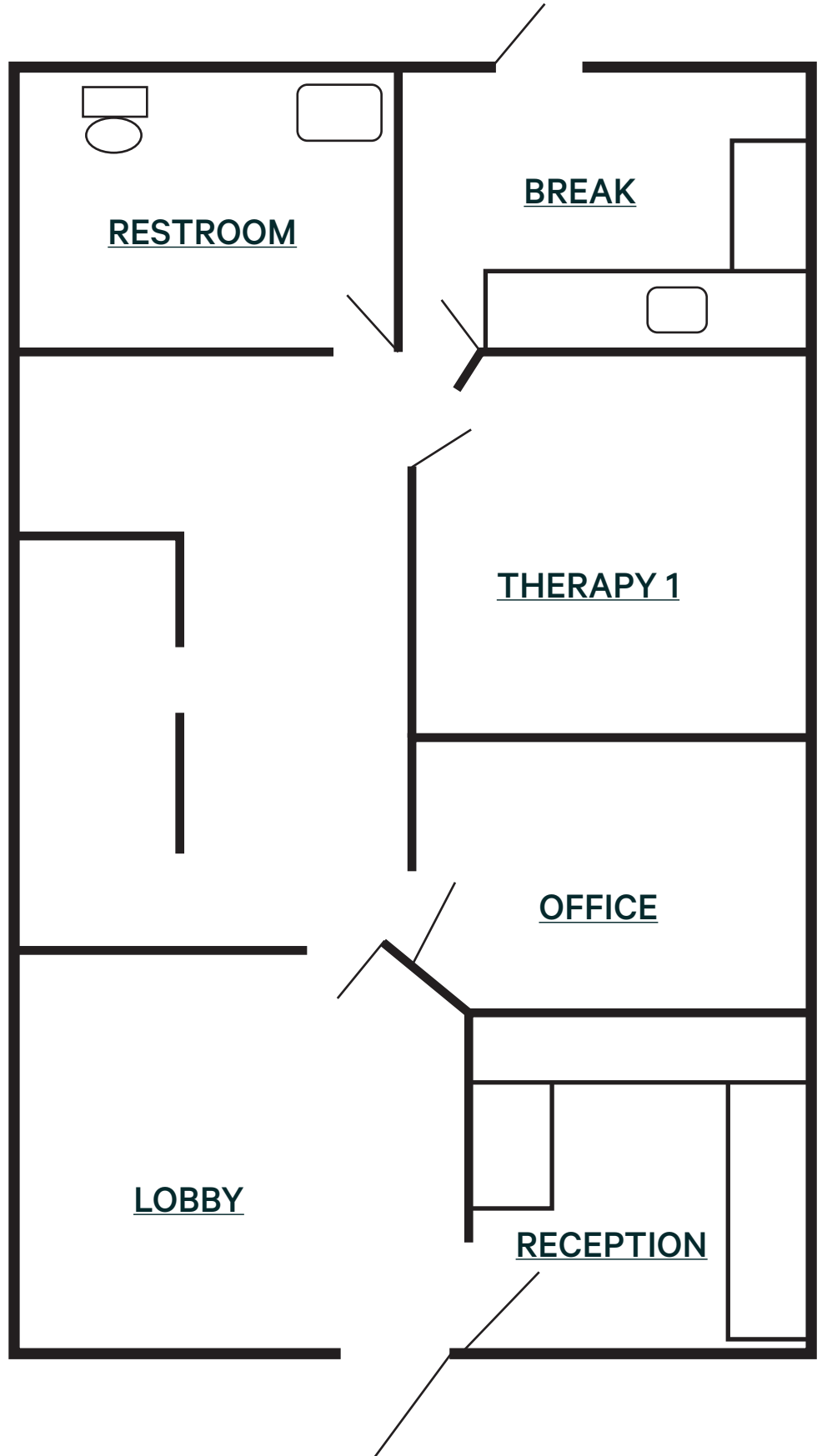


Suite 112

1,170 SF | Move-in Ready

Property Features

- + Furniture negotiable
- + Term through November 2030
- + Move-in ready, plug and play
- + Asking rate: negotiable



Medical Village at Lake Nona

10920 Moss Park Road | Orlando, FL 32832

For Sublease



Contact Us

Macy Mendez

Associate

+1 831 884 8743

macy.mendez@cbre.com

© 2026 CBRE, Inc. All rights reserved. This information has been obtained from sources believed reliable but has not been verified for accuracy or completeness. CBRE, Inc. makes no guarantee, representation or warranty and accepts no responsibility or liability as to the accuracy, completeness, or reliability of the information contained herein. You should conduct a careful, independent investigation of the property and verify all information. Any reliance on this information is solely at your own risk. CBRE and the CBRE logo are service marks of CBRE, Inc. All other marks displayed on this document are the property of their respective owners, and the use of such marks does not imply any affiliation with or endorsement of CBRE. Photos herein are the property of their respective owners. Use of these images without the express written consent of the owner is prohibited.

www.cbre.com