



**COMMERCIAL
REAL ESTATE**
the sign of a .profitable property

AVAILABLE 



WESTERN TOWN PLAZA

1730 Sepulveda Blvd., Torrance, CA 90501



JOSEPH GOBERT
(818) 514-3494 | jgobert@illicre.com
DRE#01900768

TODD NATHANSON
(818) 514-2204 | todd@illicre.com
DRE#00923779



RETAIL SPACE
TORRANCE, CA

EXCLUSIVELY LISTED BY

JOSEPH GOBERT
ASSOCIATE

(818) 514-3494 | jgobert@illicre.com
DRE#01900768

TODD NATHANSON
PRESIDENT

(818) 514-2204 | todd@illicre.com
DRE#00923779



This information has been secured from sources we believe to be reliable, but we make no representations or warranties, expressed or implied, as to the accuracy of the information. References to square foot-age are approximate. References to neighboring retailers are subject to change, and may not be adjacent to the vacancy being marketed either prior to, during, or after leases are signed. Lessee must verify the information and bears all risk for any inaccuracies.

5945 CANOGA AVENUE, WOODLAND HILLS, CA 91367 - 818.501.2212/PHONE - www.illicre.com - DRE #01834124

PROPERTY FEATURES

1730 Sepulveda Blvd., Torrance, CA 90501







APPROX. 842-3,168 SF

RETAIL SPACES AVAILABLE

- ✓ Anchored by 7-Eleven and Spires Restaurant
- ✓ Co-Tenants include: Best Dental, Modo Ink, Designers Barbershop, Ramen Izakaya Ajido, Sei-Ko-En, Complete Nail Care, XH Massage, J&J Barber Supply, Bon Acupuncture, and Cozy Down
- ✓ Over 138 surface parking spaces are available
- ✓ Highly visible shopping center
- ✓ Fully built-out cold kitchen available

AREA AMENITIES

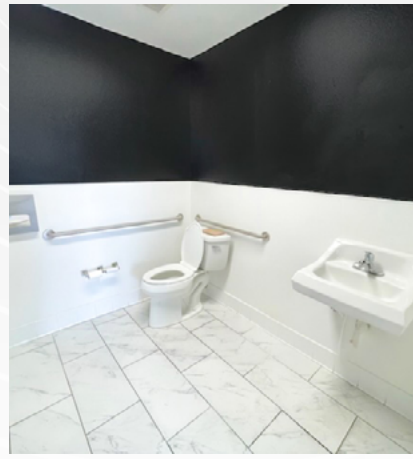
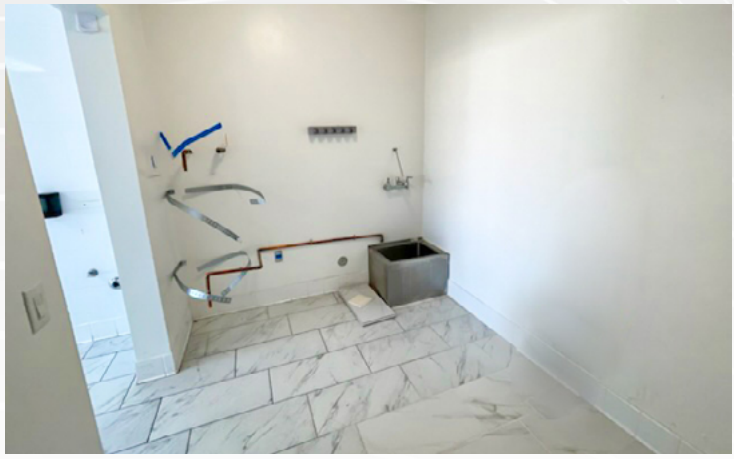
- ✓ Neighboring tenants include: Walgreens, CVS, Rite Aid, McDonald's, and Burger King within 1.5 mile radius
- ✓ ±64,429 CPD on Sepulveda Blvd. and Western Ave.
- ✓ Located on a signalized corner of a major intersection at Sepulveda and Western

— DEMOGRAPHICS		1 MILE	3 MILE	5 MILE
	Population	34,274	219,862	483,229
	Avg. HH Income	\$117,299	\$111,168	\$121,358
	Daytime Pop	33,179	209,849	457,298
	Traffic Count	± 31,450 CPD ON WESTERN AVE		

RETAIL SPACE
TORRANCE, CA

INTERIOR PHOTOS

1730 Sepulveda Blvd., Torrance, CA 90501



RETAIL SPACE
TORRANCE, CA

INTERIOR PHOTOS

1730 Sepulveda Blvd., Torrance, CA 90501



UNIT 11



UNIT 12



AVAILABLE



AERIAL MAP



**COMMERCIAL
REAL ESTATE**

JOSEPH GOBERT
ASSOCIATE

(818) 514-3494 | jgobert@illicre.com
DRE#01900768

TODD NATHANSON
PRESIDENT

(818) 514-2204 | todd@illicre.com
DRE#00923779



5945 CANOGA AVENUE | WOODLAND HILLS, CA 91367 | 818.501.2212/PHONE | www.illicre.com | DRE #01834124

This information has been secured from sources we believe to be reliable, but we make no representations or warranties, expressed or implied, as to the accuracy of the information. References to square foot-age are approximate. References to neighboring retailers are subject to change, and may not be adjacent to the vacancy being marketed either prior to, during, or after leases are signed. Lessee must verify the information and bears all risk for any inaccuracies.