



FOR LEASE 3,200 SF

# INSPACE AT OAKLAND PARK

3705 NE 4<sup>th</sup> Avenue  
Oakland Park, FL 33334



# INSPACE AT OAKLAND PARK

3705 NE 4<sup>th</sup> Avenue

## Property Features

---

**Space Available:** 3,200 SF

---

**Office Space:** TBD

---

**Clear Height:** 18'

---

**Doors:** 1 Dock High Door and 1 Drive-In Door

---

**Loading Configuration:** Cross Dock

---

**Column Spacing:** 40 ft

---

**Truck Court:** Shared

---

**Fire / Life Safety:** Wet Pipe System

---

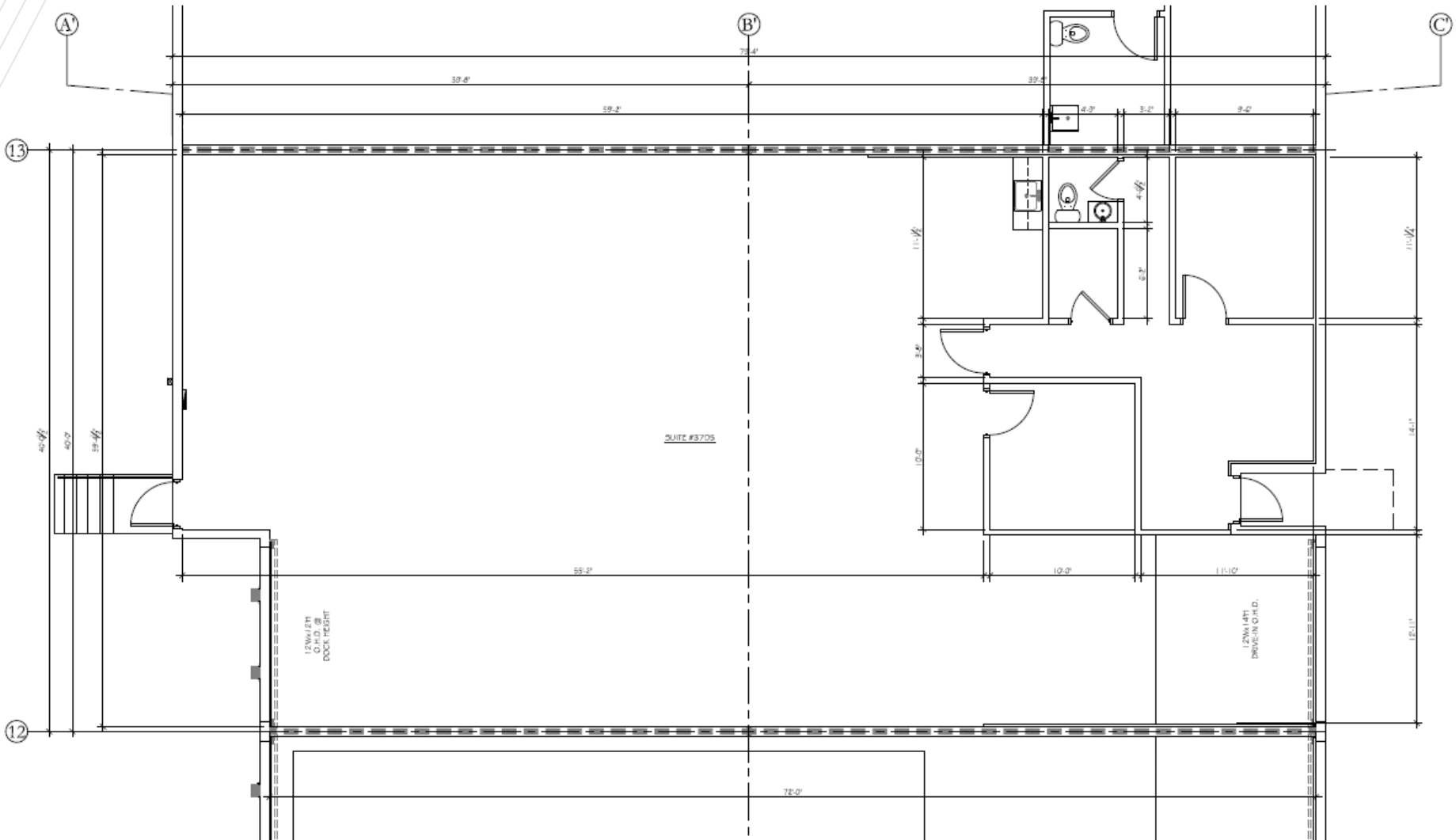
**Location:** Ideally situated with great proximity to I-95



# INSPACE AT OAKLAND PARK

3705 NE 4<sup>th</sup> Avenue

## FLOOR PLAN





**3731 NE 4th Avenue**  
Oakland Park, FL 33334



**FOR MORE INFORMATION, CONTACT:**

**MATTHEW G. MCALLISTER, SIOR**  
Executive Director  
+1 561 901 5216  
[Matthew.mcallister@cushwake.com](mailto:Matthew.mcallister@cushwake.com)

**ERIC CANTOR**  
Senior Associate  
+1 561 227 2068  
[Eric.cantor@cushwake.com](mailto:Eric.cantor@cushwake.com)

©2024 Cushman & Wakefield. All rights reserved. The information contained in this communication is strictly confidential. This information has been obtained from sources believed to be reliable but has not been verified. NO WARRANTY OR REPRESENTATION, EXPRESS OR IMPLIED, IS MADE AS TO THE CONDITION OF THE PROPERTY (OR PROPERTIES) REFERENCED HEREIN OR AS TO THE ACCURACY OR COMPLETENESS OF THE INFORMATION CONTAINED HEREIN, AND SAME IS SUBMITTED SUBJECT TO ERRORS, OMISSIONS, CHANGE OF PRICE, RENTAL OR OTHER CONDITIONS, WITHDRAWAL WITHOUT NOTICE, AND TO ANY SPECIAL LISTING CONDITIONS IMPOSED BY THE PROPERTY OWNER(S). ANY PROJECTIONS, OPINIONS OR ESTIMATES ARE SUBJECT TO UNCERTAINTY AND DO NOT SIGNIFY CURRENT OR FUTURE PROPERTY PERFORMANCE.

