

# ±10,065 SF Office/Warehouse Space

5304 Roseville Road, Suite A/B  
Sacramento, CA 95660



**CONTACT US:**

**TODD SANFILIPPO, SIOR**

Executive Vice President  
P: +1 916 847 3206  
todd.sanfilippo@cbre.com  
LIC. 01045162

**MATT SUSAC**

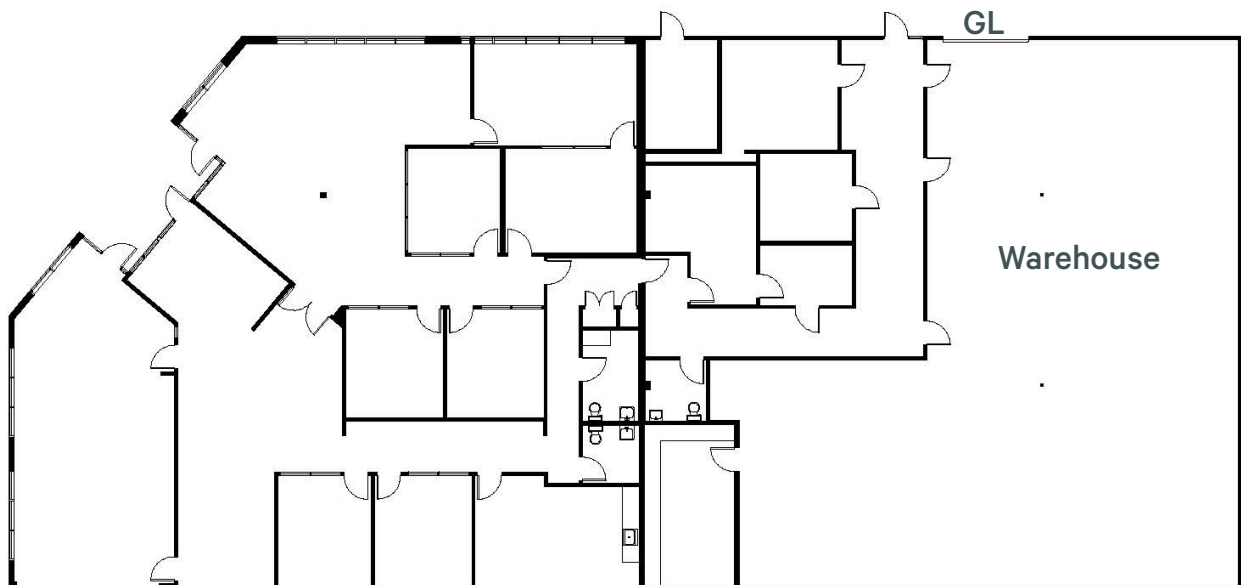
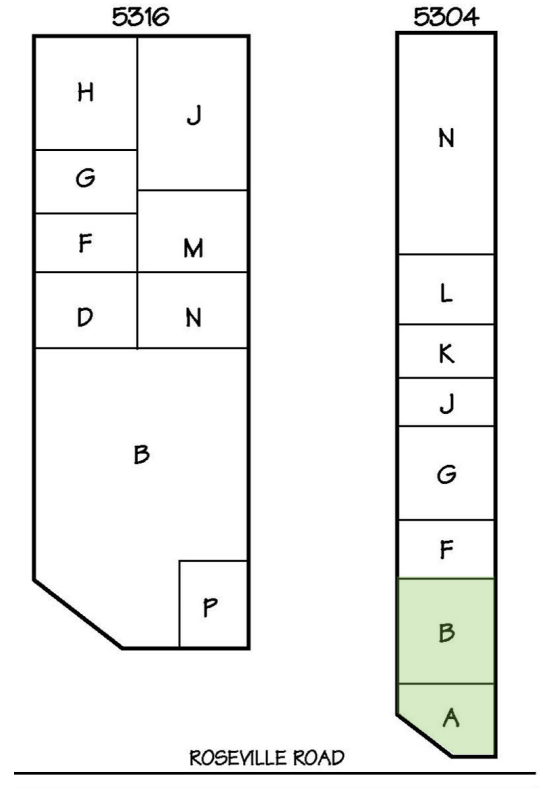
Senior Vice President  
P: +1 916 781 4832  
matt.susac@cbre.com  
LIC. 01979110

**WALTER SMYTH**

Senior Vice President  
P: +1 916 781 4843  
walter.smyth@cbre.com  
LIC. 00956946

# Property Features

- Available: ±10,065 SF
- Office: ±6,681 SF
- Warehouse: ±3,384 SF
- Clear Height: ±18'
- GL Door: 1 (±10'x14')
- Power: ±100 Amps, 110/208 Volt
- Zoning: M-1
- Livingston Trade Center is a two-building complex fronting Roseville Road. It is conveniently located minutes from I-80 and Business 80.



NOT TO SCALE. ALL DIMENSIONS ARE APPROXIMATE

# Property Photos

---





MAP IS NOT TO SCALE. ALL LOCATIONS ARE APPROXIMATE AND FOR GENERAL, ILLUSTRATIVE PURPOSES ONLY.

© 2025 CBRE, Inc. All rights reserved. This information has been obtained from sources believed reliable, but has not been verified for accuracy or completeness. You should conduct a careful, independent investigation of the property and verify all information. Any reliance on this information is solely at your own risk. CBRE and the CBRE logo are service marks of CBRE, Inc. All other marks displayed on this document are the property of their respective owners, and the use of such logos does not imply any affiliation with or endorsement of CBRE. Photos herein are the property of their respective owners. Use of these images without the express written consent of the owner is prohibited.