

FOR LEASE

NORTH BAY CENTRE

6319 Commerce Boulevard, Rohnert Park, CA 94928



The information herein has not been independently verified by the real estate brokers. Interested parties should have experts of their choice inspect and verify all information. Real estate brokers are not experts with respect to building construction, environmental, legal, tax, and other such matters.

MATT KRUPP

CA LIC #01162918

(415) 287-6228

mkrupp@meridiancommercial.com

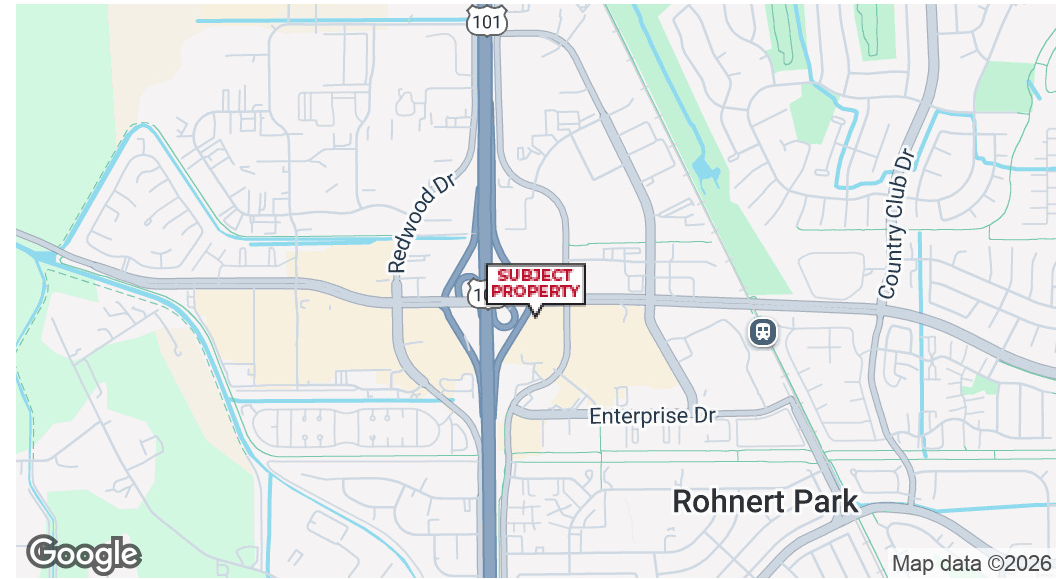


FOR LEASE

Property Summary

NORTH BAY CENTRE

6319 Commerce Boulevard, Rohnert Park, CA 94928



PROPERTY HIGHLIGHTS

- Dominant grocery anchored center
- Located at the signalized intersection of Rohnert Park Expressway and Commerce Boulevard
- Immediate Highway 101 access and visibility
- Co-Tenants include **Grocery Outlet, 24 Hour Fitness, Chipotle, Panera Bread, Little Caesars Pizza**
- Affluent demographics within a five-mile radius
- Average household income of \$155,900

OFFERING SUMMARY

Lease Rate:	\$2.25 SF/month (NNN)
Available SF:	±3,220 SF
Building Size:	±5,870 SF
Property Type:	Retail
Zoning:	CITYRP



MATT KRUPP
CA LIC #01162918
(415) 287-6228
mkrupp@meridiancommercial.com

FOR LEASE

Property Description

NORTH BAY CENTRE

6319 Commerce Boulevard, Rohnert Park, CA 94928



PROPERTY DESCRIPTION

North Bay Center is a premier Daily Needs Shopping Center in Rohnert Park and is in the most active retail corridor in the trade area. Strategically located at the signalized intersection of Rohnert Park Expressway and Commerce Boulevard, the **North Bay Center** offers easy access for customers, and immediate freeway access. **North Bay Center** boasts several prominent national retailers including **Grocery Outlet, 24 Hour Fitness, Chipotle, Panera Bread, Subway, and Little Caesars Pizza**. The property is surrounded by dense residential population, and strong day time demographics.

LOCATION DESCRIPTION

North Bay Center is located at the southwest corner of Rohnert Park Expressway and Commerce Boulevard. The property has excellent access with several ingress and egress points along Commerce Boulevard. **North Bay Center** offers immediate freeway access along Rohnert Park Expressway, and the available property has freeway visibility as well. **North Bay Center** is positioned to offer easy accessibility for not only Rohnert Park residents, but also Santa Rosa and Petaluma.

MATT KRUPP

CA LIC #01162918

(415) 287-6228

mkrupp@meridiancommercial.com

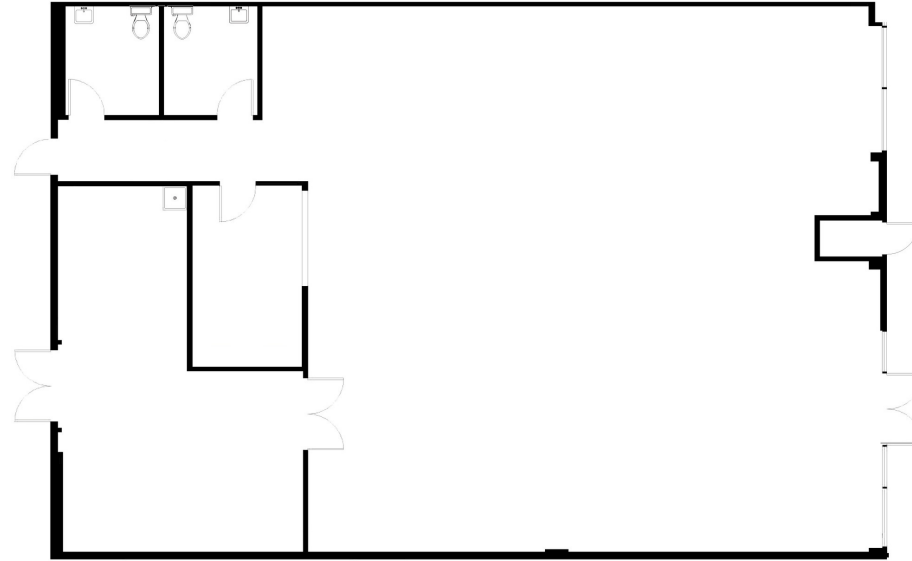


FOR LEASE

Lease Spaces

NORTH BAY CENTRE

6319 Commerce Boulevard, Rohnert Park, CA 94928



LEASE INFORMATION

Lease Type:	NNN	Lease Term:	Negotiable
Total Space:	3,220 SF	Lease Rate:	\$2.25 SF/month

AVAILABLE SPACES

SUITE	TENANT	SIZE (SF)	LEASE TYPE	LEASE RATE	DESCRIPTION
6319 Commerce Blvd	Available	3,220 SF	NNN	\$2.25 SF/month	-

FOR LEASE

Site Plans

NORTH BAY CENTRE

6319 Commerce Boulevard, Rohnert Park, CA 94928



Available Space:
Unit 6319 3,220 sf

MATT KRUPP

CA LIC #01162918

(415) 287-6228

mkrupp@meridiancommercial.com

FOR LEASE

Aerial Map

NORTH BAY CENTRE

6319 Commerce Boulevard, Rohnert Park, CA 94928



6319 Commerce Boulevard

DEMOGRAPHICS	1 MILE	3 MILES	5 MILES
Total population	14,726	60,850	87,178
Median age	39	40	39
Median age (Male)	38	39	39
Median age (Female)	40	41	40
Total households	5,886	22,188	30,758
Total persons per HH	2.5	2.7	2.8
Average HH income	\$106,583	\$125,192	\$122,633
Average house value	\$670,080	\$712,233	\$732,263

MATT KRUPP

CA LIC #01162918

(415) 287-6228

mkrupp@meridiancommercial.com



FOR LEASE

Retailer Map

NORTH BAY CENTRE

6319 Commerce Boulevard, Rohnert Park, CA 94928



Map data © 2025 Imagery © 2025 Airbus

MATT KRUPP

CA LIC #01162918

(415) 287-6228

mkrupp@meridiancommercial.com