

FOR LEASE

519 ESTUDILLO AVENUE

*±2,625 SF Office Spaces Available
Now in San Leandro, CA*

SAN LEANDRO, CA 94577



KIDDER.COM

519 ESTUDILLO AVE

*Prime Office Space Available in the
Heart of Downtown San Leandro*

Site Address: 519 Estudillo Ave, San Leandro, CA 94577

Parcel No. (APN): 77-525-23

Commercial Land Use Category

Office Building

Building area: ±5,250 SF

Lot Area: ±8,275 SF (±0.19 ACRES)

Building/Lot Ratio: 0.63

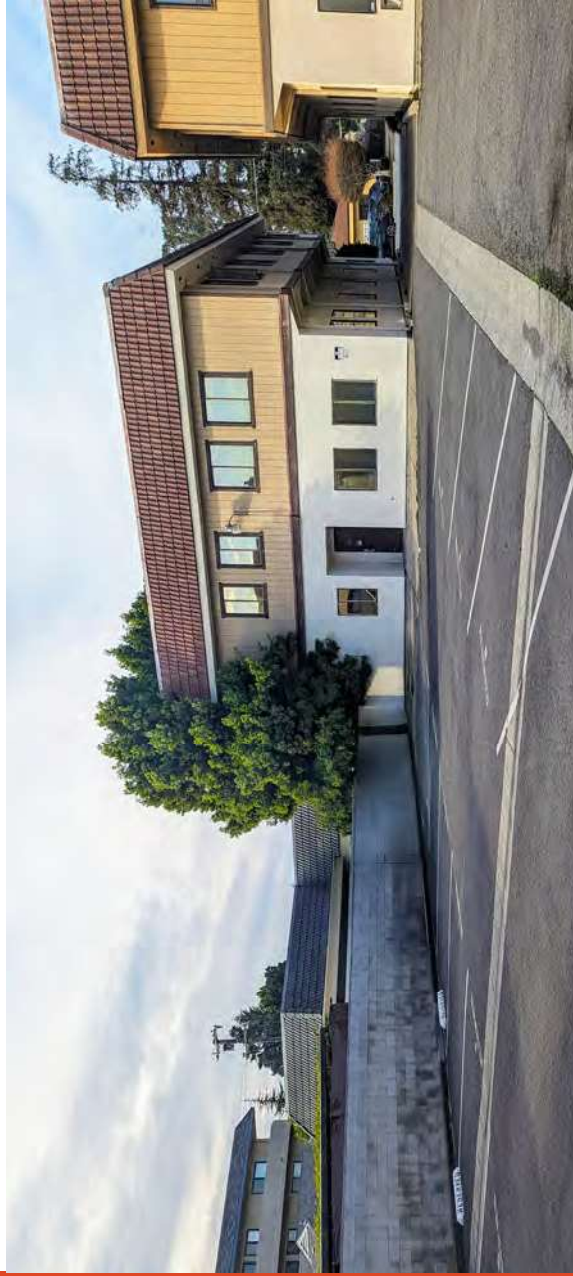
Built in 1980

1 MIN

TO SAN
LEANDRO PLAZA

7 MIN

DRIVE TO
I-880 HIGHWAY



KIDDER.COM

This information supplied herein is from sources we deem reliable. It is provided without any representation, warranty, or guarantee, expressed or implied as to its accuracy. Prospective Buyer or Tenant should conduct an independent investigation and verification of all matters deemed to be material, including, but not limited to, statements of income and expenses. Consult your attorney, accountant, or other professional advisor. All Kidder Mathews designs are the sole property of Kidder Mathews. Branded materials and layouts are not authorized for use by any other firm or person.





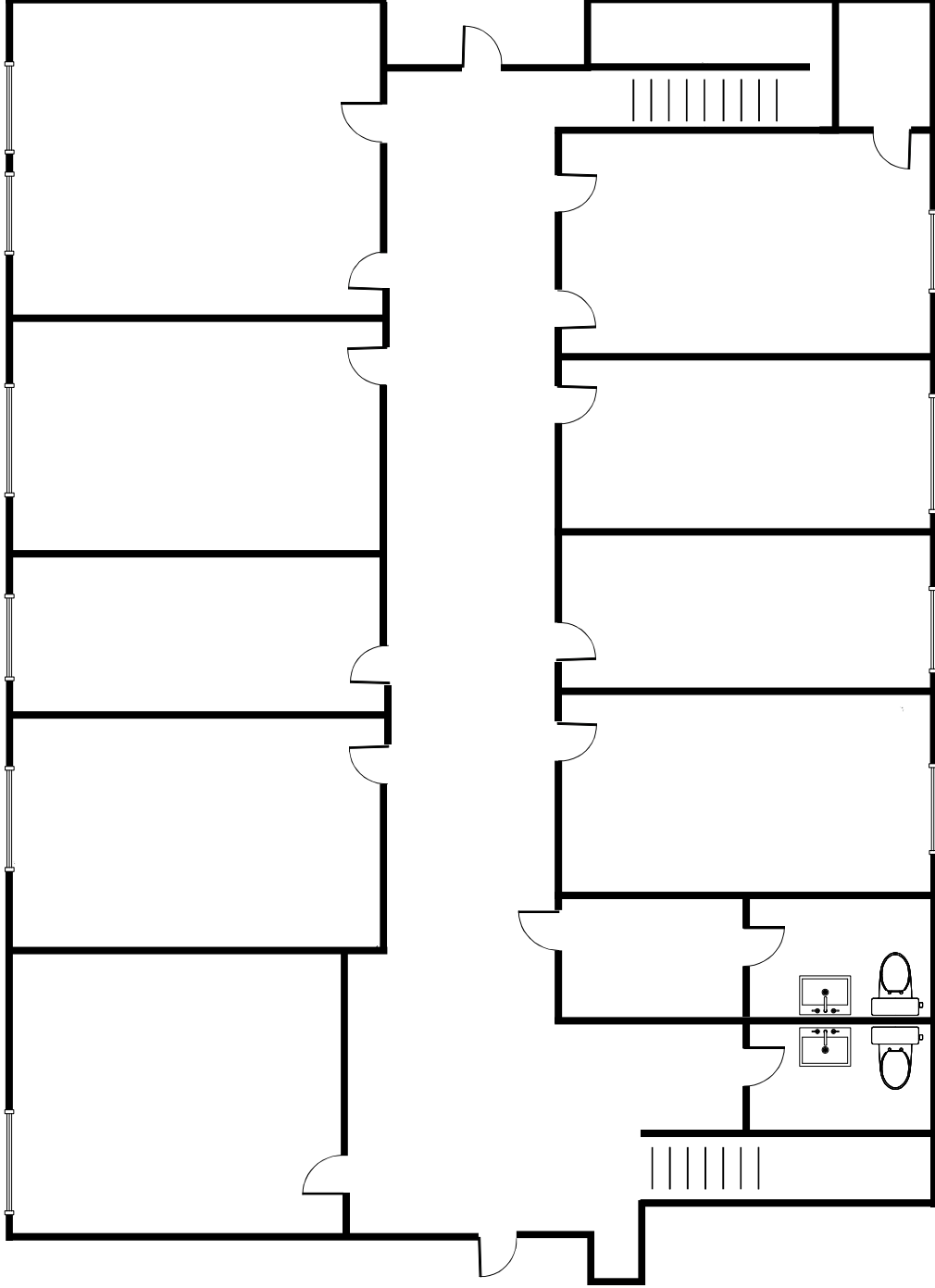
Property Highlights

The entire ground floor is now available and can be leased by a single tenant or subdivided into individual office suites, offering maximum flexibility to suit your needs. Whether you're seeking a full-floor office setup or a smaller suite, this is a unique opportunity to secure space in a desirable, central location.



519 ESTUDILLO AVE

GROUND FLOOR PLAN



+2,625 SF
AVAILABLE

RATE
CONTACT BROKER FOR PRICING

NOW
AVAILABLE

KIDDER.COM

This information supplied herein is from sources we deem reliable. It is provided without any representation, warranty, or guarantee, expressed or implied as to its accuracy. Prospective Buyer or Tenant should conduct an independent investigation and verification of all matters deemed to be material, including, but not limited to, statements of income and expenses. Consult your attorney, accountant, or other professional advisor. All Kidder Mathews designs are the sole property of Kidder Mathews. Branded materials and layouts are not authorized for use by any other firm or person.





PROPERTY DESCRIPTION

This well-positioned two-story office building offers excellent visibility and convenience in the center of downtown San Leandro. The property features large windows that provide ample natural light, generously sized office space, and a private off-street parking lot.

Each suite enjoys access to updated shared restrooms, and the second floor has recently undergone a full interior renovation, soon to be occupied by a medical home health group.

Don't miss out on this flexible and professionally updated office environment in the heart of San Leandro