



Colliers

N Market Boulevard

1415 1417 1419 1421 1425 1427 1429 1431 1433 1435

1415-1435 N Market Boulevard, Sacramento, CA

Tommy Ponder, SIOR
Executive Vice President
+1 916 563 3005
tommy.ponder@colliers.com
CA Lic. 01431506

George Vrame SIOR
Senior Vice President
+1 916 563 3041
george.vrame@colliers.com
CA Lic. 02028936

Emily Breece
Associate
+1 916 563 3091
emily.breece@colliers.com
CA Lic. 02147323

LBA Logistics 

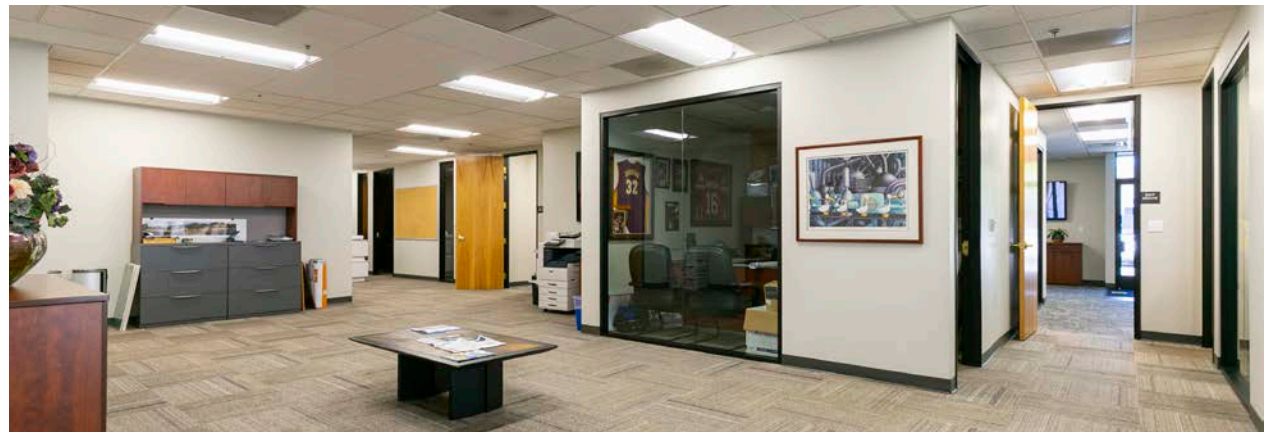
North Natomas Business Park

±195,000 SF Office/Industrial Flex Space



PROPERTY HIGHLIGHTS

- › Close proximity to several amenities
- › On-site property management
- › Convenient access to I-80 and I-5
- › 15 minute drive to Sacramento International Airport
- › 10 minute drive to Downtown
- › Zoned MP or M-1
- › Ample parking





AVAILABLE SPACE

*Click a building number to view available floor plans

1419

Suite 3: ±2,038 Total SF | ±904 SF Office | ±1,134 SF Warehouse
Suite 5: ±2,942 Total SF | ±1,226 SF Office | ±1,716 SF Warehouse

1421

±20,849 - ±50,870 SF
(adjoining yard available ±27,236 - ±54,472 SF)

1431

Suite 1: ±4,038 Total SF | ±2,785 SF Office | ±1,253 SF Warehouse

1435

Suite 1: ±3,915 Total SF | ±3,495 SF Office/Showroom | ±420 SF Warehouse



N Market Blvd.





 ±7.2 miles
 SMF International Airport



 ±1.7 miles
 Convenient highway access

- NATOMAS MARKETPLACE**
- IN-N-OUT BURGER
 - REGAL CINEMAS
 - Walmart
 - STAPLES
 - THE HOME DEPOT
 - PET SMART
 - STARBUCKS COFFEE
 - ON THE BORDER MEXICAN RESTAURANT & BAR
 - WHEELERS
 - SUBWAY
 - BED BATH & BEYOND
 - Rubio's
 - at&t
 - DELTA

- Raley's DISTRIBUTION
- Coca-Cola DISTRIBUTION
- CHIPOTLE MEXICAN BOWL
- chili's
- FIREHOUSE SUBS
- CHASE
- RED WING SHOES

- BJ's RESTAURANT BREWHOUSE
- Panera BREAD
- OLD NAVY
- TOMMY STEAK HOUSE
- BED BATH & BEYOND
- Target
- verizon
- ASHLEY

- BEST BUY
- BevMo!
- MAGNOLIA
- ROADHOUSE



LBA Logistics



<p>TOMMY PONDER, SIOR Executive Vice President +1 916 563 3005 tommy.ponder@colliers.com CA Lic. 01431506</p>	<p>GEORGE VRAME, SIOR Senior Vice President +1 916 563 3041 george.vrame@colliers.com CA Lic. 02028936</p>	<p>EMILY BREECE Associate +1 916 563 3091 emily.breece@colliers.com CA Lic. 02147323</p>
--	---	---

This document has been prepared by Colliers International for advertising and general information only. Colliers International makes no guarantees, representations or warranties of any kind, expressed or implied, regarding the information including, but not limited to, warranties of content, accuracy and reliability. Any interested party should undertake their own inquiries as to the accuracy of the information. Colliers International excludes unequivocally all inferred or implied terms, conditions and warranties arising out of this document and excludes all liability for loss and damages arising there from. This publication is the copyrighted property of Colliers International and/or its licenso(r)s. Real estate officer license corporation identification number 01908588. ©2026. All rights reserved.