

**FOR LEASE**

**924 Professional Place**

Chesapeake, VA 23320



**THALHIMER**

**TOM DANA**  
Vice President  
757 499 2894  
[ttom.dana@thalhimer.com](mailto:ttom.dana@thalhimer.com)

Town Center of Virginia Beach  
222 Central Park Avenue | Suite 1500  
Virginia Beach, VA 23462  
[thalhimer.com](http://thalhimer.com)

**1,180 SF  
AVAILABLE**

# PROPERTY HIGHLIGHTS



**SECOND FLOOR  
OFFICE SPACE**

±1,180 SF



**CONVENIENT  
LOCATION**

GREENBRIER PARKWAY  
NEAR VOLVO



**ATTRACTIVE  
MODERN STYLING**



**GREENBRIER  
OFFICE PARK**



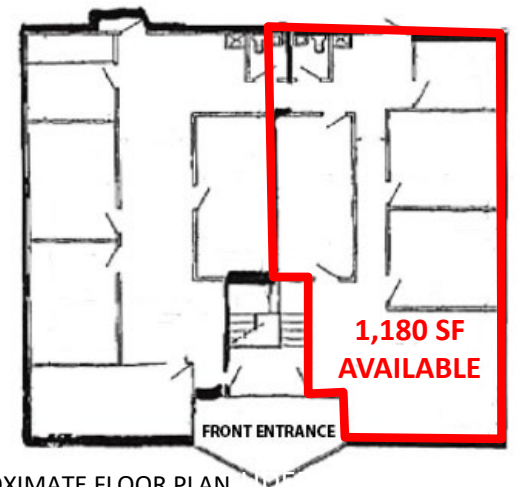
**\$3,100.00 / MONTH**

TENANT PAYS  
ELECTRIC & JANITORIAL

# PROPERTY AERIAL MAP



## GREENBRIER COMMERCE PARK





**TOM DANA**  
Vice President  
757 499 2894  
[tom.dana@thalhimer.com](mailto:tom.dana@thalhimer.com)

Town Center of Virginia Beach  
222 Central Park Avenue, Suite 1500  
Virginia Beach, VA 23452  
[thalhimer.com](http://thalhimer.com)

*Independently Owned and Operated / A Member of the Cushman & Wakefield Alliance*

*Cushman Wakefield | Thalhimer ©2025. No warranty or representation, express or implied, is made to the accuracy or completeness of the information contained herein, and same is submitted subject to errors, omissions, change of price, rental or other conditions, withdrawal without notice, and to any special listing conditions, imposed by the property owner(s). As applicable, we make no representation as to the condition of the property (or properties) in question.*