

SWC MIAMI GARDENS DR & 87TH AVE | MIAMI GARDENS, FL

PALM SPRINGS SQUARE

150,000 SF AVAILABLE FOR LEASE



PROJECT DETAILS

PALM SPRINGS SQUARE • 150,000 SF AVAILABLE • RETAIL

PROPERTY HIGHLIGHTS

- SW corner of Miami Gardens Dr & 87th Ave
- Proposed: 150,000± SF Retail
- Regional access adjacent to I-75 & FL Turnpike Interchange
- Primary retail intersection servicing NW Miami Gardens/Lakes

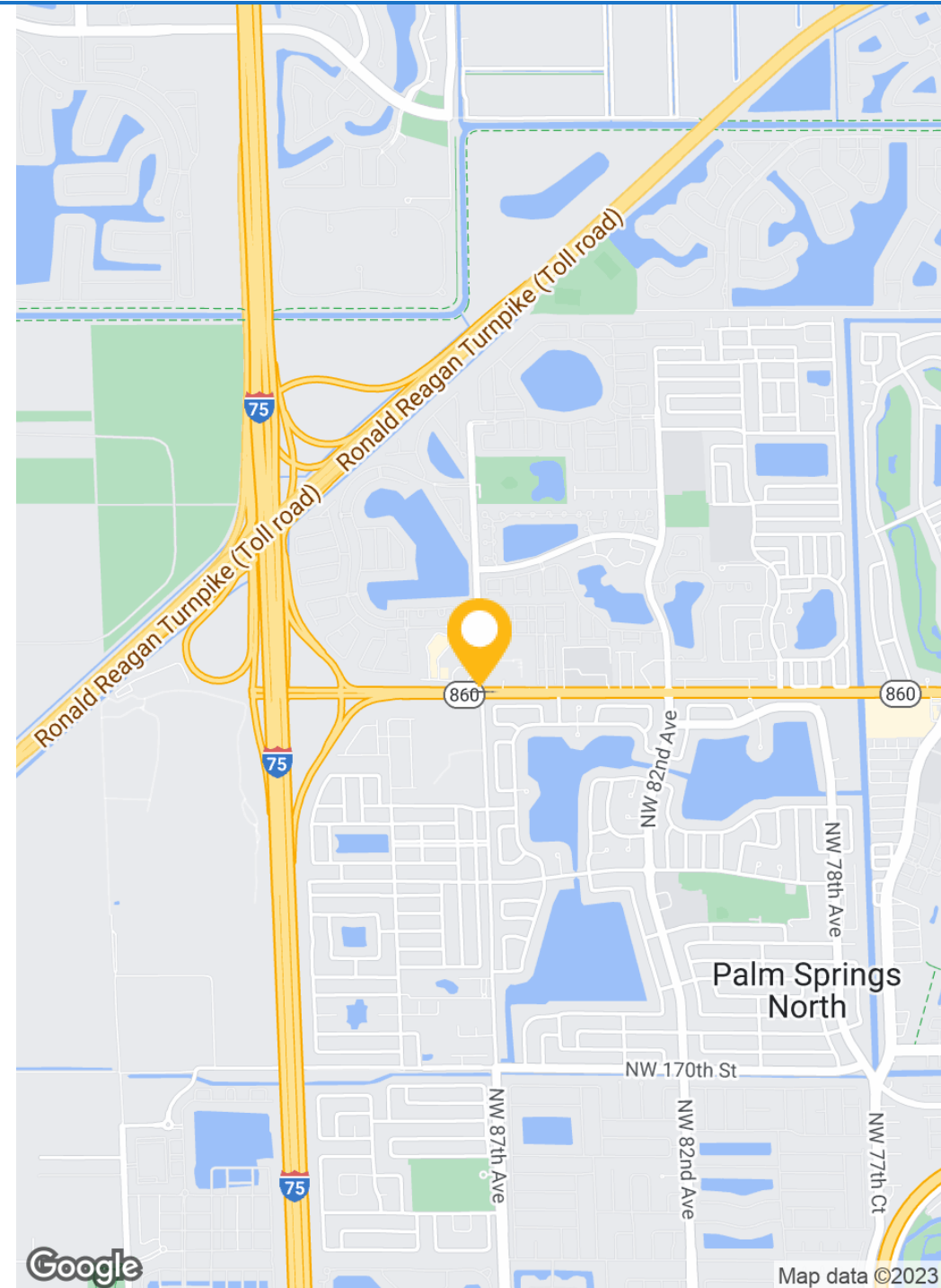
DEMOGRAPHICS

TOTAL POPULATION

1 MILE	3 MILES	5 MILES	7 MILES
18,161	135,062	384,615	673,015

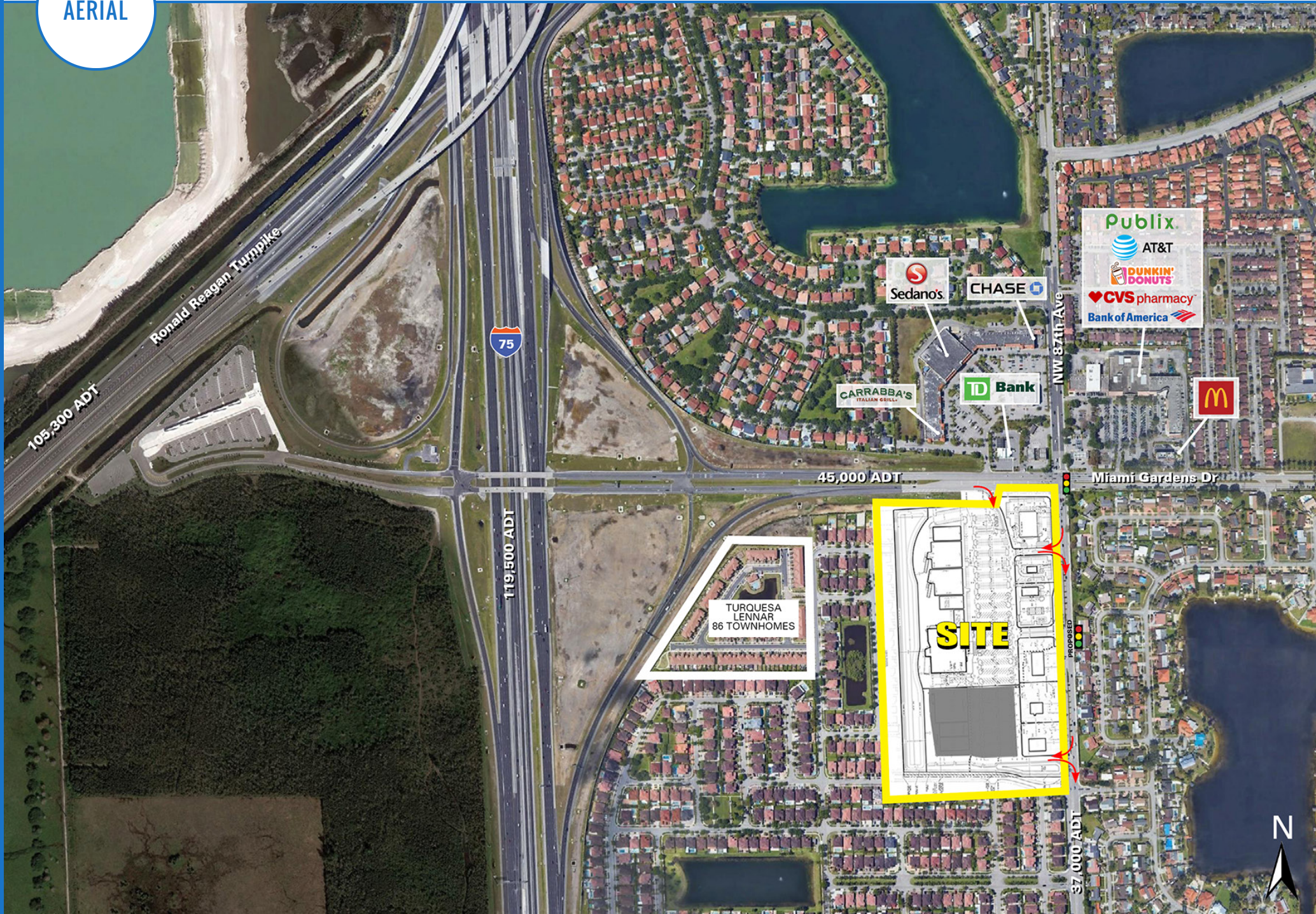
MEDIAN HH INCOME

1 MILE	3 MILES	5 MILES	7 MILES
\$88,849	\$75,297	\$66,387	\$66,066



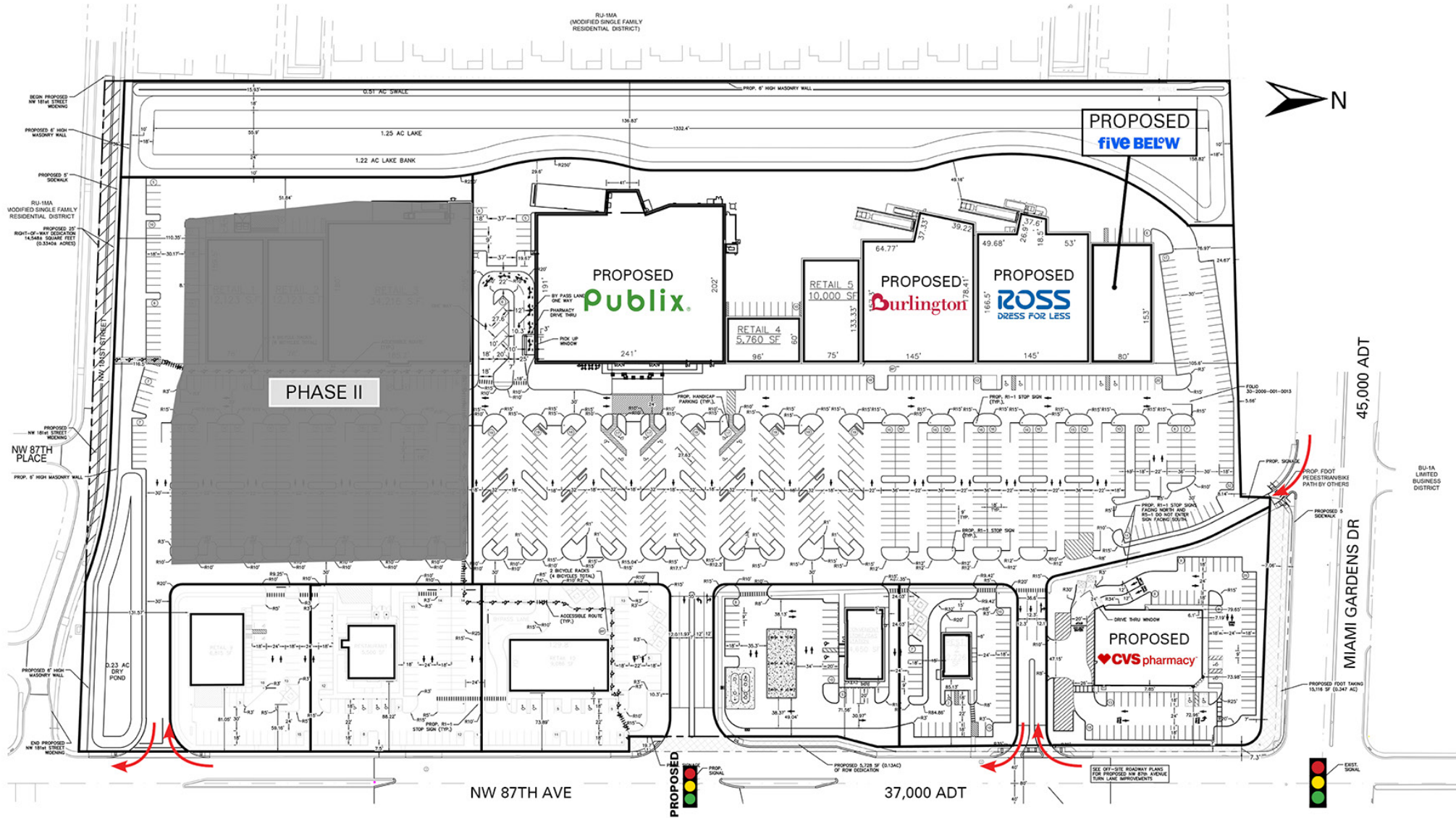
AERIAL

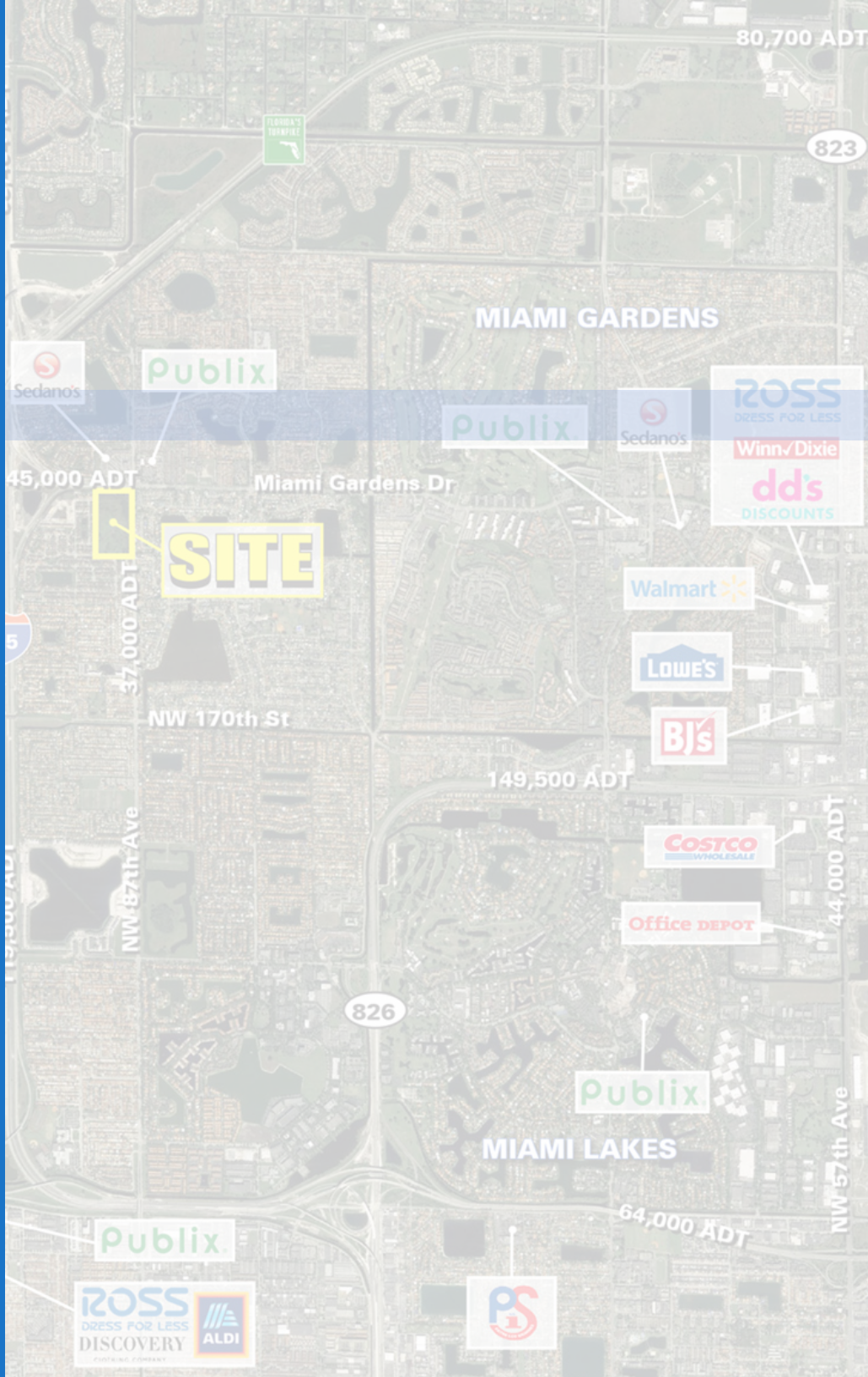
PALM SPRINGS SQUARE • 150,000 SF AVAILABLE • RETAIL



SITE PLAN

PALM SPRINGS SQUARE • 150,000 SF AVAILABLE • RETAIL





SWC MIAMI GARDENS DR & 87TH AVE | MIAMI GARDENS, FL

PALM SPRINGS SQUARE

150,000 SF AVAILABLE FOR LEASE | RETAIL

DANIEL LYNCH

561.424.3011
 DLYNCH@ATLANTICRETAIL.COM

ROSS WATERS

561.424.3014
 RWATERS@ATLANTICRETAIL.COM



WEST PALM BEACH

1001 N US HIGHWAY ONE, SUITE 600
 JUPITER, FL 33477
 561.427.6699

- ALBANY**
- ATLANTA**
- BOSTON**
- CHARLOTTE**
- LOS ANGELES**
- NEW YORK CITY**
- ORLANDO**
- PITTSBURGH**

WWW.ATLANTICRETAIL.COM

[LINKEDIN.COM/COMPANY/ATLANTIC-RETAIL-PROPERTIES](https://www.linkedin.com/company/atlantic-retail-properties)

[INSTAGRAM.COM/ATLANTIC_RETAIL](https://www.instagram.com/atlantic_retail)

REALTY RESOURCES CHAINLINKS