

# 5300 GEARY BOULEVARD

FOR LEASE | MEDICAL OFFICE SUITES AVAILABLE

**TCP**  
**TOUCHSTONE**  
COMMERCIAL PARTNERS



 **Eliopoulos** Group

**JARON ELIOPOULOS**  
415.608.6336 | jaron@tcp.com

**CAMERON TU**  
510.919.8193 | cameron@tcp.com

**VISIT ELIOPOULOSGROUP.COM**

# 5300 GEARY BOULEVARD

## PROPERTY SUMMARY

### ADDRESS

5300 Geary Boulevard, San Francisco, CA 94121

### AVAILABLE SPACE

Suite 315: +/- 553 Square Feet

Suite 215: +/- 500 Square Feet

### RENTAL RATE

Suite 315: \$2,350 / Month, Industrial Gross

Suite 215: \$2,150 / Month, Industrial Gross

### AVAILABLE

Immediately

## BUILDING ATTRIBUTES

- + Suite 315: Brand New Renovation
- + Suite 215: Professionally Cleaned and Painted
- + Recently Renovated Lobby and Common Areas
- + Recently Renovated Elevator
- + Waiting Room and Reception Area
- + Two (2) Treatment Rooms with Sinks
- + Third Treatment Room or Office Without Sink
- + Kitchenette
- + One (1) Restroom
- + Excellent Natural Light



SUITE 315



SUITE 215

# 5300 GEARY BOULEVARD



SUITE 315



# 5300 GEARY BOULEVARD



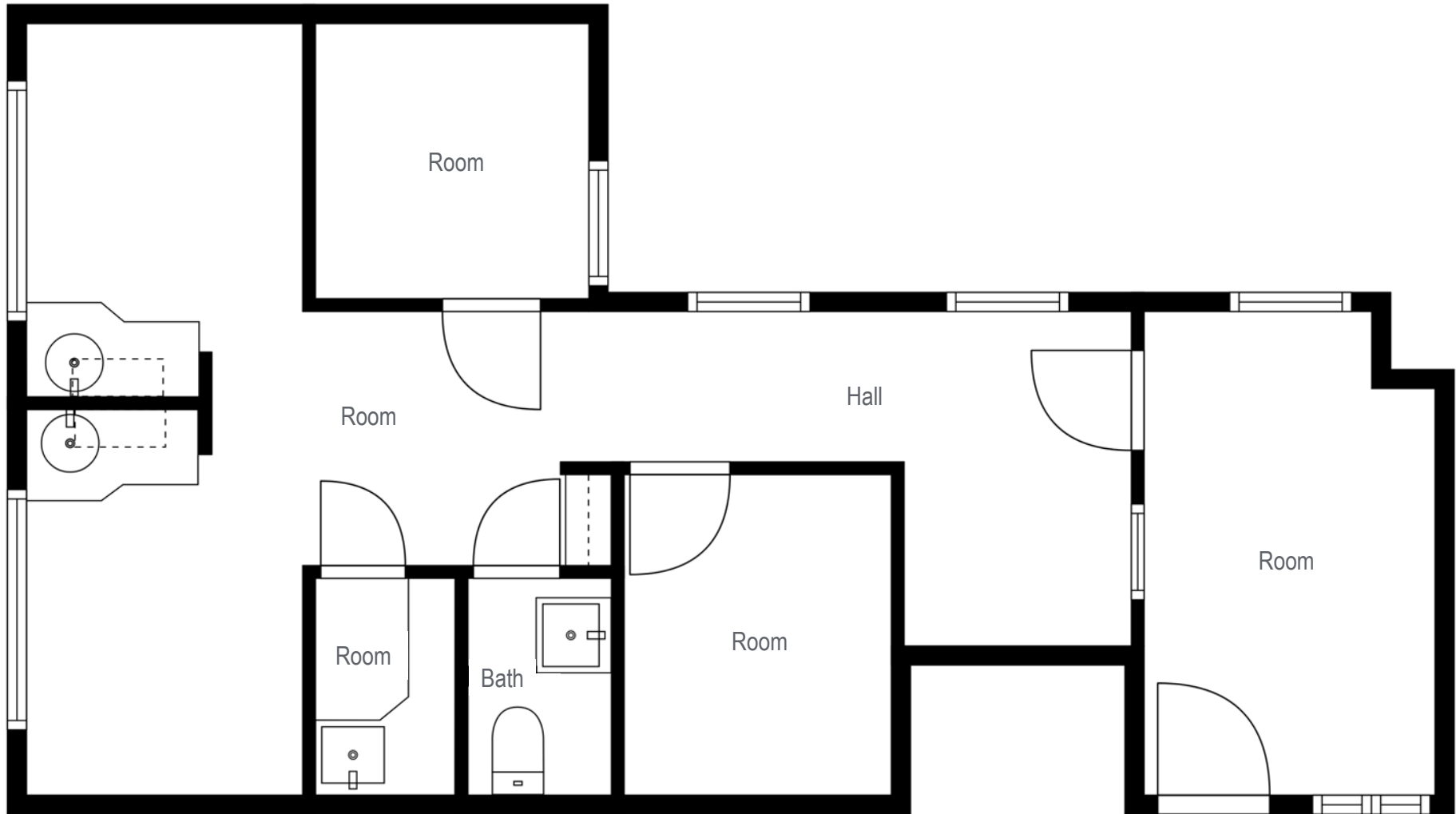
SUITE 215



# 5300 GEARY BOULEVARD

## FLOOR PLAN

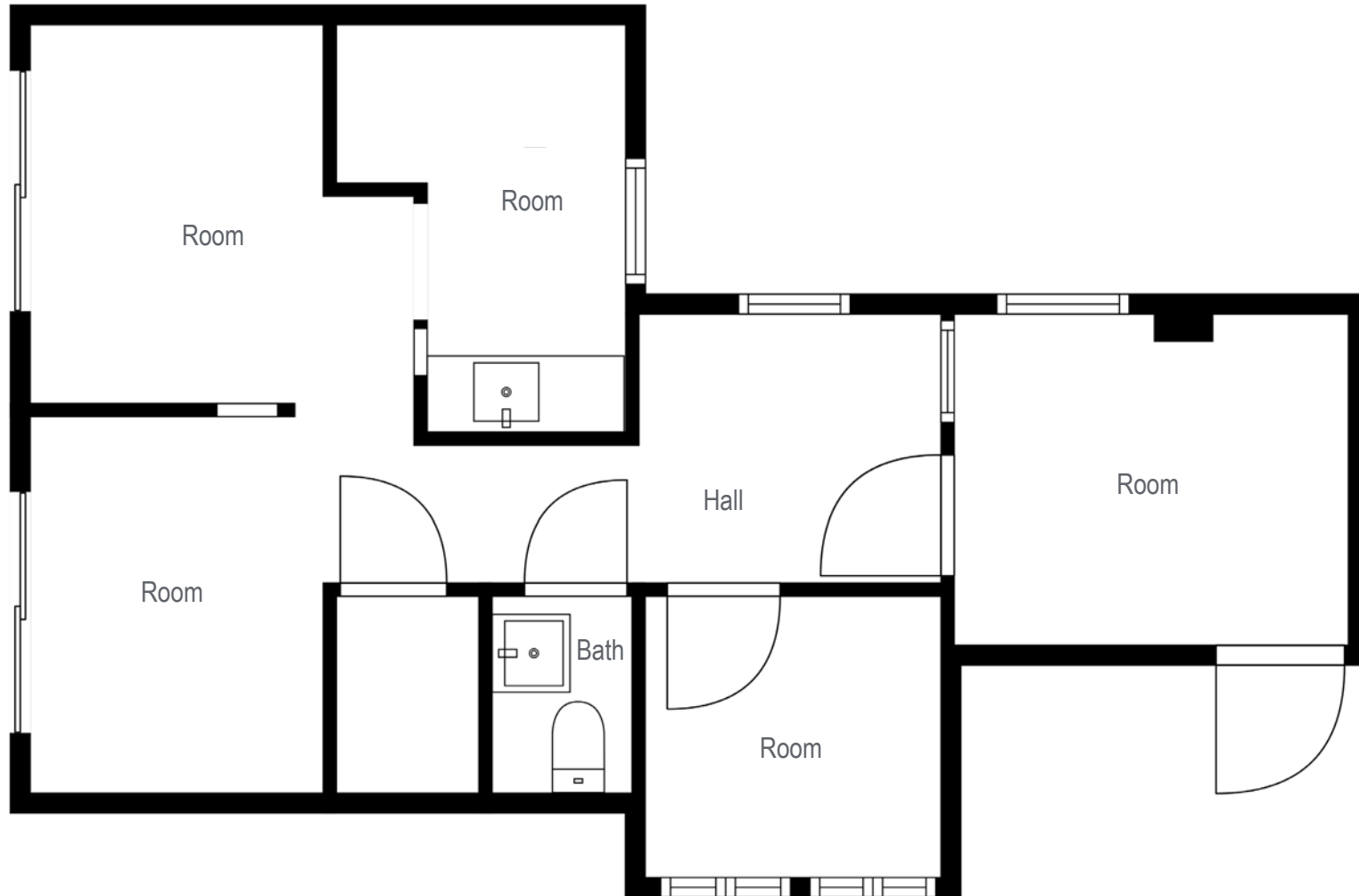
Suite 315: +/- 553 Square Feet



# 5300 GEARY BOULEVARD

## FLOOR PLAN

Suite 215: +/- 500 Square Feet



# 5300 GEARY BOULEVARD

## LOCATION OVERVIEW

Desirable Richmond District location, walkable to nearby amenities and to public transportation.



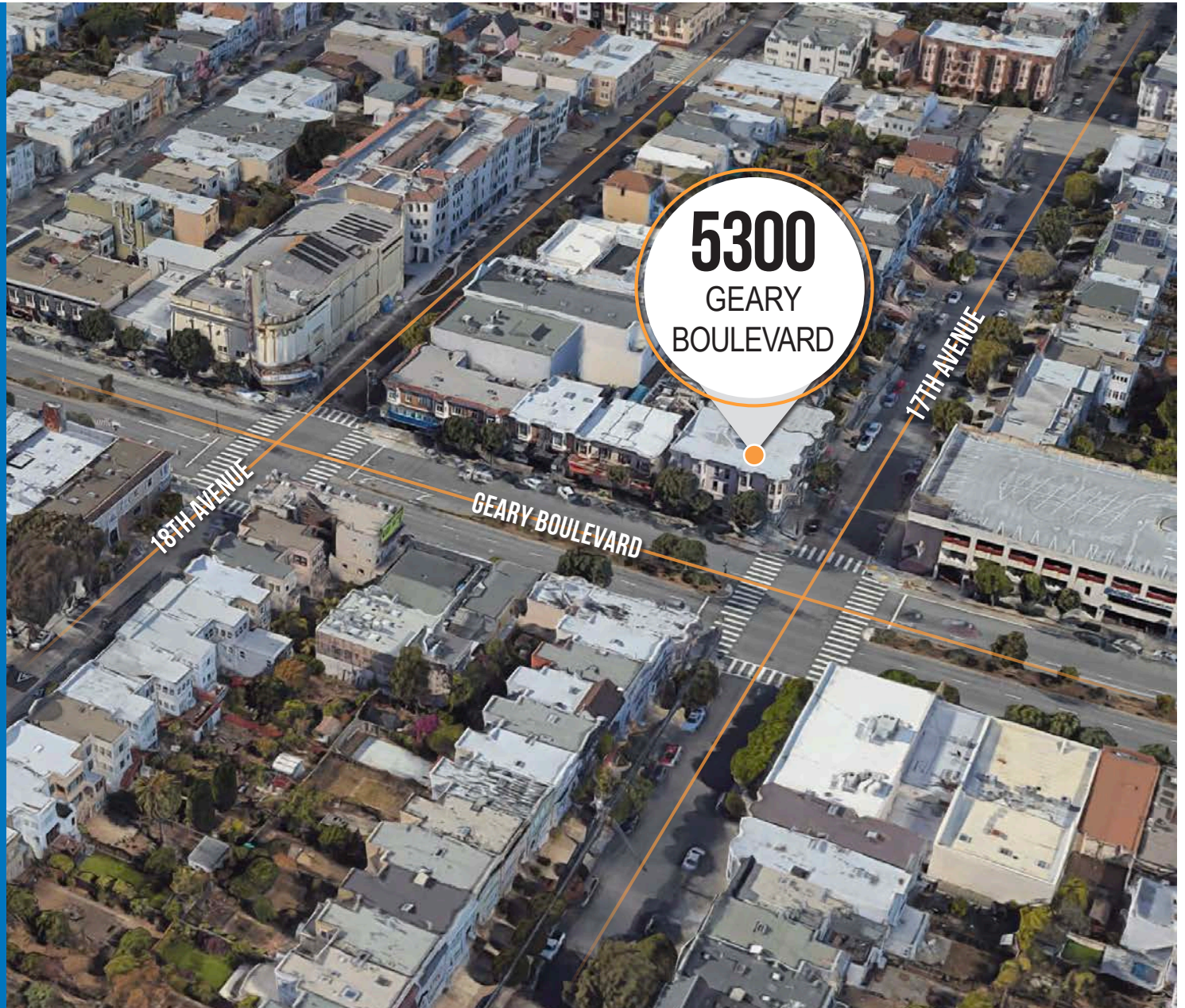
- 01 MIN to 17th Avenue Muni
- 12 MIN to Golden Gate Park
- 17 MIN to Mountain Lake Park



- 05 MIN to The Presidio
- 10 MIN to Japantown
- 18 MIN to Union Square



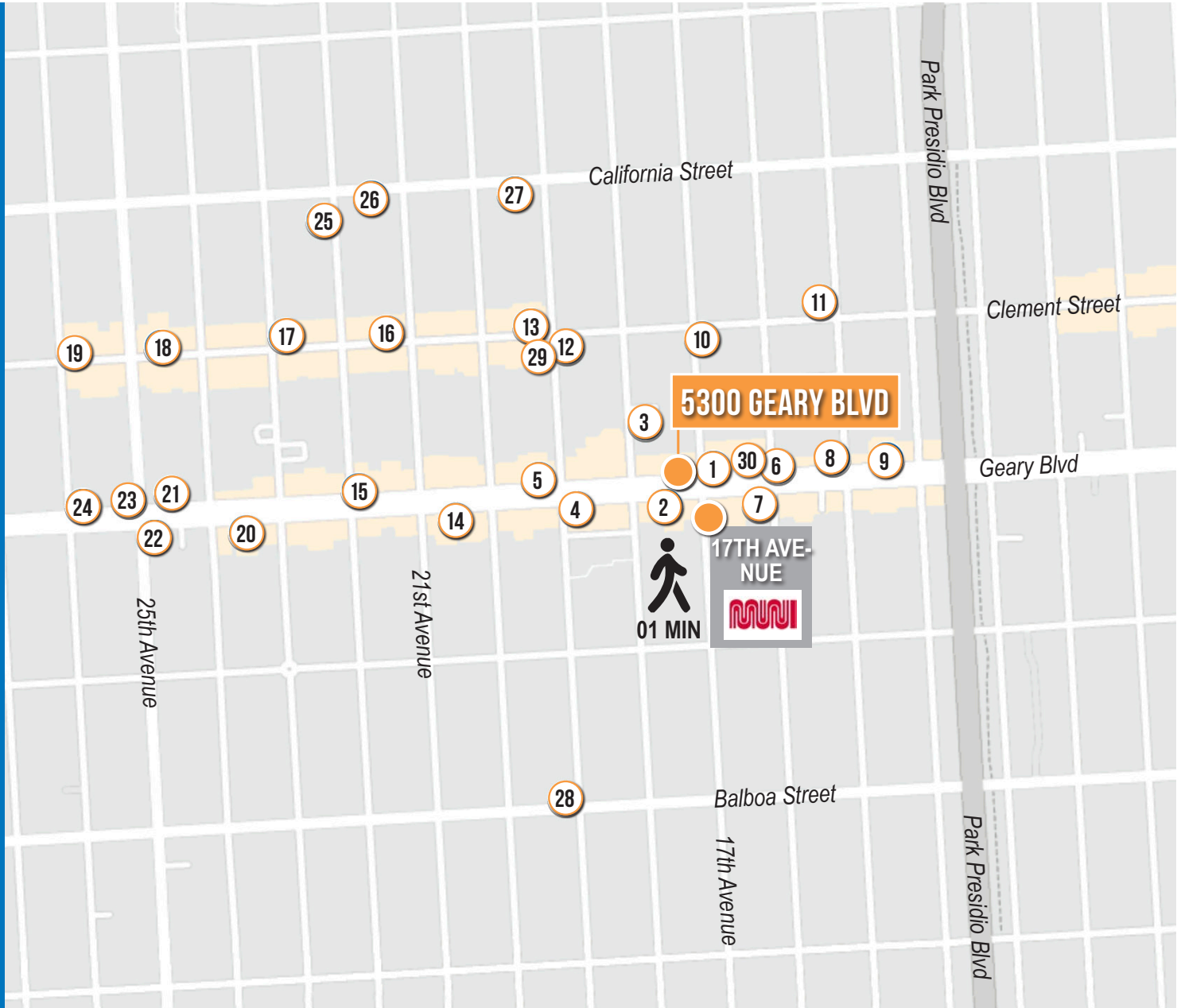
- 16 MIN to 101 On-Ramp
- 19 MIN to 80 On-Ramp
- 21 MIN to 280 On-Ramp



# 5300 GEARY BOULEVARD

## NEARBY AMENITIES

- 1..... Walgreens
- 2..... Royal Market Food & Bakery
- 3..... Richmond District YMCA
- 4..... Starbucks
- 5..... Boiling Hot Pot
- 6..... Ross Dress for Less
- 7..... Peet's Coffee
- 8..... 7-Eleven
- 9..... House of Bagels
- 10..... San Francisco Brewcraft
- 11..... Breadbelly
- 12..... Tia Margarita
- 13..... Blue Fin Sushi & Lounge
- 14..... The Blarney Stone Bar
- 15..... The UPS Store
- 16..... Home Coffee Roasters
- 17..... K-Elements BBQ
- 18..... PPQ Dungeness Island
- 19..... Hard Knox Cafe
- 20..... Tommy's Mexican Restaurant
- 21..... Bambū Desserts & Drinks
- 22..... Jiffy Lube
- 23..... Citibank
- 24..... Trad'r Sam
- 25..... Firehouse Pizzeria
- 26..... Bazaar Café
- 27..... New California Food Market
- 28..... Han Il Kwan
- 29..... Lokma
- 30..... Hong Kong Lounge



# 5300 GEARY BOULEVARD



LOKMA



PEET'S COFFEE



BREADBELLY SF



HONG KONG LOUNGE



HOME COFFEE ROASTERS

# 5300 GEARY BOULEVARD



**JARON ELIOPOULOS** DRE # 01975155  
415.608.6336 | [jaron@tcpre.com](mailto:jaron@tcpre.com)

**CAMERON TU** DRE # 02100436  
510.919.8193 | [cameron@tcpre.com](mailto:cameron@tcpre.com)

[VISIT ELIOPOULOSGROUP.COM](http://VISIT ELIOPOULOSGROUP.COM)

Corp. Lic. 01112906  
[www.tcpre.com](http://www.tcpre.com)

The information presented has been secured from sources we believe to be reliable but we make no representations or warranties, expressed or implied, as to the accuracy of the information. Lessee must verify the information and bears all risk for any inaccuracies.