

FOR LEASE

HARBOUR AUTO MALL

6480-6520 W COMMERCIAL BLVD, LAUDERHILL, FL 33319

6400 W COMMERCIAL BLVD.



SPACE HIGHLIGHTS

- 1,936 SF
- Located in Center of the Plaza
- Great for Auto Retail or Mechanic Use
- Exceptional Visibility with Building and Pylon Signage
- FIVE 10' x 12' Grade Level Overhead Doors
- Air-Conditioned Small Office/ Service Counter Area
- Lube Pit for Oil Changes
- CAM is \$8.16 PSF and Includes Water and Trash



HALEY PRESSER

Property Manager / Sales Associate
Direct: 954.485.9200 | Cell: 954.254.5396
Haley@levyrai.com

ANGIE WEAVER

Lauderdale Lakes and Lauderhill Manager
Direct: 954.485.9200 | Cell: 917.645.2339
angie@levyrai.com

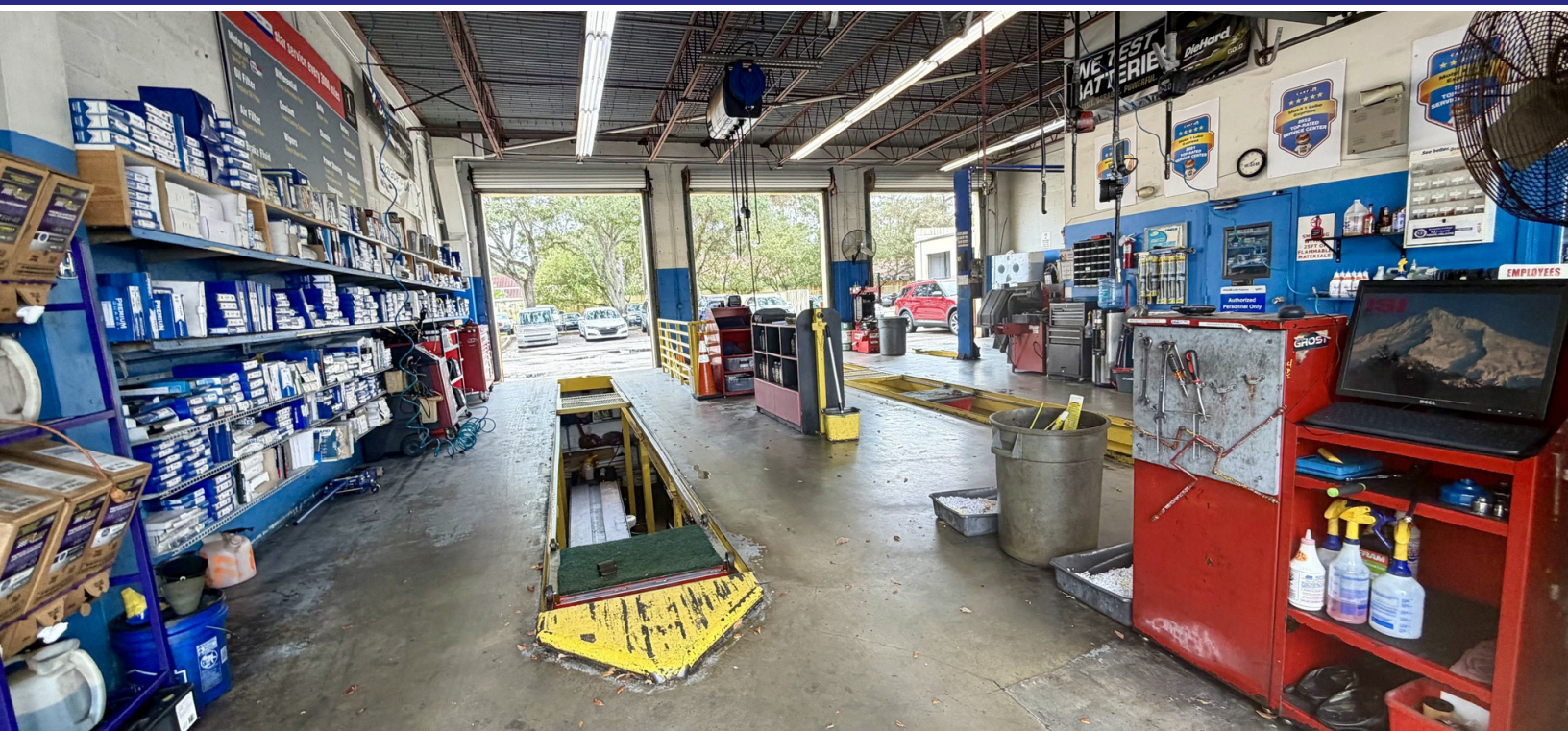


FOR LEASE

HARBOUR AUTO MALL

6480-6520 W COMMERCIAL BLVD, LAUDERHILL, FL 33319

ADDITIONAL PHOTOS



HALEY PRESSER

Property Manager / Sales Associate
Direct: 954.485.9200 | Cell: 954.254.5396
Haley@levyrai.com

ANGIE WEAVER

Lauderdale Lakes and Lauderdale Manager
Direct: 954.485.9200 | Cell: 917.645.2339
angie@levyrai.com

