

FOR LEASE

10466 Fulton Drive,
Acheson AB



PREMIUM FLEXIBLE INDUSTRIAL SPACE WITH YARD

REMAX Commercial Excel presents a prime opportunity to lease flexible industrial space in Acheson, Alberta, featuring a well-maintained building with customizable unit sizes and terms, each equipped with two overhead doors and sumps, complemented by a secure graveled yard and ample front parking.

Flexible industrial space for lease in Acheson, Alberta. This is very well maintained building with flexible size options and terms, each unit contains 2 overhead doors, and sumps. This building offers secure graveled yard and ample parking in the front.

PROPERTY DETAILS

| | |
|----------------|-----------------------|
| Available unit | C |
| Ceiling Height | 20' Clear |
| Loading | Grade (12' x 16') |
| Sumps | Yes |
| Heating | Forced Air |
| Power | 200 amp 3 phase (TBV) |
| Yard | Graveled & Fenced |
| Zoning | MI |
| Available | Immediately |
| Lease rate | \$12.00 PSF |
| Op Costs | \$6.00 PSF |

[More Details On Next Page →](#)

REMAX
COMMERCIAL
Excel

DEAN DRYSDALE,
Vice President

(780) 953-4585
deandrysdale@gmail.com

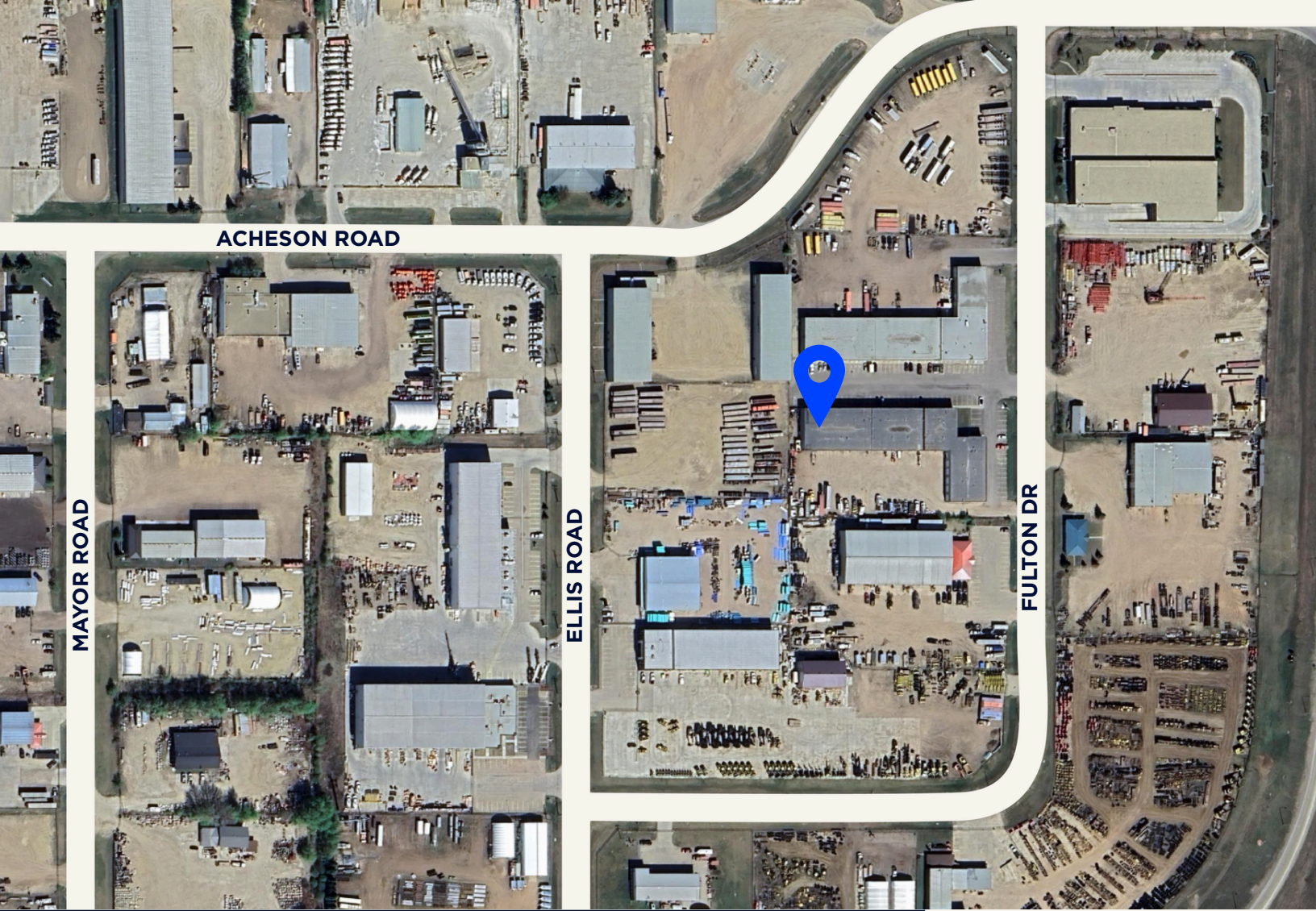
SALIM MITHA,
Associate

(780) 655 4008
salim.mitha@commercialexcel.ca

FLOORPLAN AND PHOTOS

| | | | | | | | |
|---------------------|---------------------|-----------------------|---------------------|---------------------|---------------------|---------------------|------------------|
| 2530 SF L | 2530 SF K | 5060 SF I-J | 2519 SF H | 2540 SF G | 2508 SF F | 2476 SF E | D 1367SF |
| | | | | | | | C 2121 SF |
| | | | | | | | B 2121 SF |
| | | | | | | | A 2077 SF |







CONTACT.

DEAN DRYSDALE


Vice President

 (780) 953-4585

 deandrysdale@gmail.com

SALIM MITHA

Associate

 (780) 655 4008

 salim.mitha@commercialexcel.ca

