

RETAIL SPACE FOR LEASE

439 GREAT NORTHERN ROAD

SAULT STE. MARIE, ON



James Caico

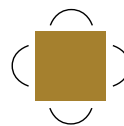
Broker of Record
Century 21 Choice Realty Inc., Brokerage
(705) 941-8978
james-caicco.c21.ca

Len Goudy

Broker of Record
Goudy Real Estate Corp., Real Estate Brokerage
(416) 830-0880
lgoudy@goudyrealestatecorp.com

CENTURY 21.
Choice Realty Inc.
BROKERAGE

121 Brock St, Sault Ste. Marie,
ON P6A 3B6 | **(705) 942-2100**



Goudy Real Estate Corp.
Real Estate Brokerage
Commercial Real Estate
Sales & Leasing

14 Bigwood Court, Toronto,
ON M1H 1Z9 | **(905) 477-3000**

The information contained herein has been provided to Goudy Real Estate Corp. and Century 21 Choice Realty Inc. by others. We do not warrant its accuracy. You are advised to independently verify the information prior to submitting an Offer and to provide for sufficient due diligence in an offer. The information contained herein may change from time to time without notice. The property may be withdrawn from the market at any time without notice.

AREA DETAILS

439 GREAT NORTHERN ROAD



DETAILS:

Position your business at the center of Sault Ste. Marie's commercial growth. Located at 439 Great Northern Road, this brand-new 18,127 sq. ft. development offers an unparalleled opportunity for a big-box retailer or a mid-to-large scale commercial user. This site is strategically co-located with the city's newest development and sits immediately adjacent to a high-traffic Pino's IGA, ensuring a built-in customer base from day one. The building offers high-visibility frontage on the city's primary commercial artery, featuring modern construction and ample on-site parking. The space is designed for versatility and can be demised to suit specific tenant requirements. Ready for immediate occupancy, this is the premier choice for national brands or large-scale service providers looking to dominate the Northern Ontario market.

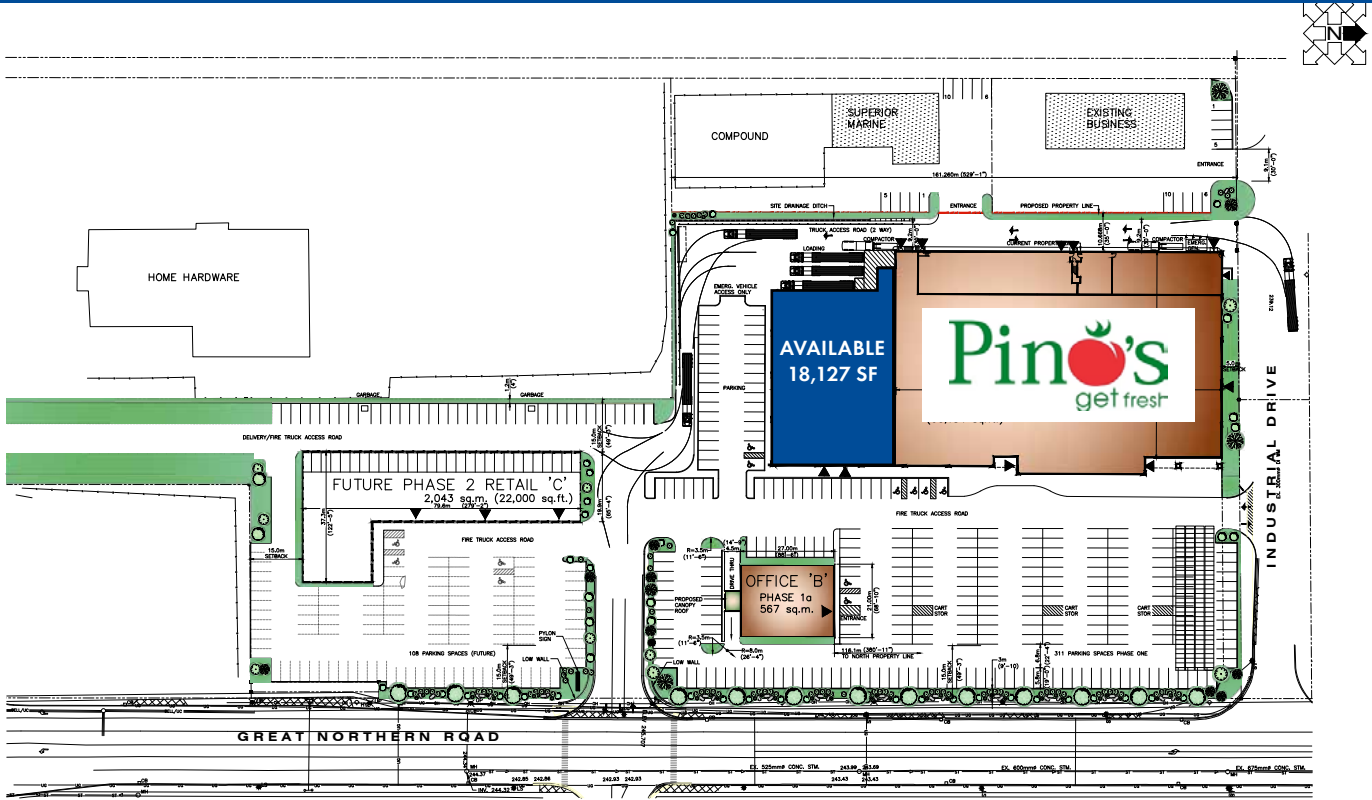
Excellent Annual Average Daily Traffic Count of 14,807 (source: sitewise)

AVAILABLE BUILDING:

18,127	Can be demised
RENT	\$40.00 PSF Year 1 + escalations over the term.
TMI	Please contact for information

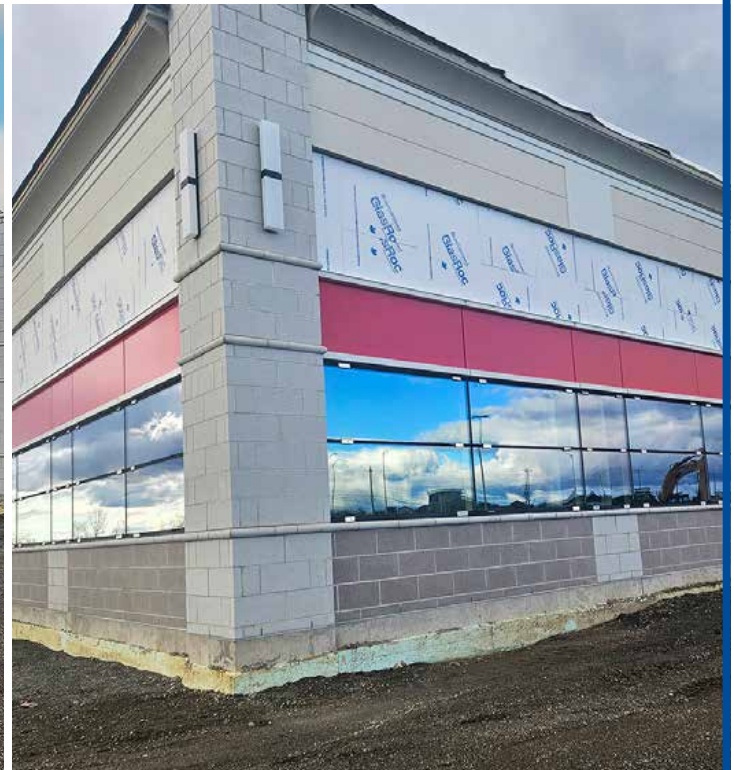
SITE PLAN

439 GREAT NORTHERN ROAD



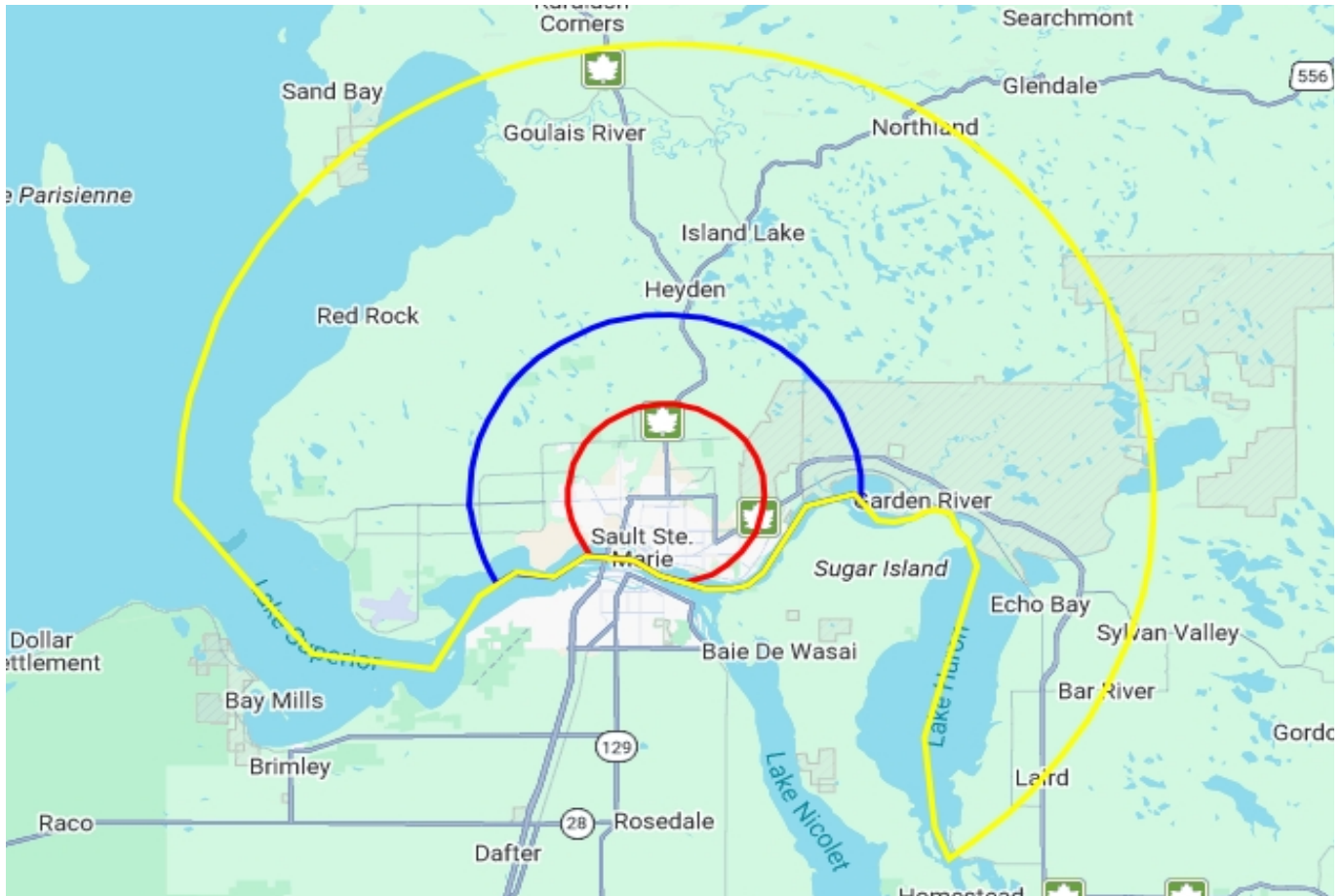
GENERAL ARRANGEMENT SITE PLAN

C5 COMMERCIAL DEVELOPMENT



DEMOGRAPHICS

439 GREAT NORTHERN ROAD



2025 Daytime Population	0 - 5 km		0 - 10 km		0 - 25 km	
		%		%		%
Total Estimated Population	61,110		78,971		87,676	
Total Daytime Population	67,819		83,528		88,554	
Daytime Population at Home	33,276	49.1%	42,557	50.9%	47,186	53.3%
0 to 14 years	7,872	11.6%	10,783	12.9%	12,111	13.7%
15 to 64 years	12,080	17.8%	15,096	18.1%	16,613	18.8%
65 years and over	13,323	19.6%	16,679	20.0%	18,462	20.8%
Daytime Population at Work	35,250	52.0%	40,979	49.1%	42,141	47.6%
Work At Usual Place	26,253	38.7%	30,141	36.1%	30,738	34.7%
Work Mobile	5,373	7.9%	6,031	7.2%	6,153	6.9%
Work At Home	3,625	5.3%	4,807	5.8%	5,251	5.9%

DEMOGRAPHICS

439 GREAT NORTHERN ROAD

2025 Demographic Snapshot	0 - 5 km		0 - 10 km		0 - 25 km	
		%		%		%
Total Population						
2020 estimated	58,056		74,544		82,309	
2025 estimated	61,110		78,971		87,676	
2030 Projected	60,621		78,576		87,770	
% Pop. Change (2020-2025)	5.3%		5.9%		6.5%	
% Pop. Change (2025-2030)	-0.8%		-0.5%		0.1%	
2025 Total Population by Age	61,110		78,971		87,676	
0 to 4 years	2,278	3.7%	3,081	3.9%	3,436	3.9%
5 to 19 years	8,569	14.0%	11,842	15.0%	13,265	15.1%
20 to 24 years	4,225	6.9%	5,408	6.8%	5,850	6.7%
25 to 34 years	8,661	14.2%	10,775	13.6%	11,760	13.4%
35 to 44 years	7,245	11.9%	9,522	12.1%	10,608	12.1%
45 to 54 years	6,547	10.7%	8,640	10.9%	9,664	11.0%
55 to 64 years	7,953	13.0%	10,271	13.0%	11,684	13.3%
65 to 74 years	7,938	13.0%	10,217	12.9%	11,485	13.1%
75 years & over	7,695	13%	9,215	12%	9,923	11%
Median Age	44.4		43.8		43.9	
2025 Total Census Families	15,807		21,075		23,601	
Average Persons Per Family	2.7		2.8		2.8	
Total Couples	12,332	78.0%	16,613	78.8%	18,824	79.8%
Without children at home	7,174	45.4%	9,344	44.3%	10,606	44.9%
With children at home	5,158	32.6%	7,269	34.5%	8,218	34.8%
Lone-parent families	3,475	22.0%	4,462	21.2%	4,777	20.2%
Children Per Census Family	0.9		0.9		0.9	
2025 Educational Attainment (15 years+)	51,969		66,872		73,789	
Less than a bachelor degree	41,030	79.0%	52,299	78.2%	57,951	78.5%
Bachelor degree & higher	10,938	21.0%	14,573	21.8%	15,838	21.5%
2025 Households	27,228		34,206		37,548	
Persons per household	2.20		2.27		2.29	
Average household income	\$ 107,726		\$ 115,638		\$ 117,977	
2025 Occupied Dwellings	27,228		34,206		37,548	
Owned dwellings	17,398	63.9%	23,000	67.2%	25,872	68.9%
Rented dwellings	9,703	35.6%	10,990	32.1%	11,229	29.9%
Dominant building type	Houses		Houses		Houses	
Dominant period of construction	1961-1980		1961-1980		1961-1980	
Dominant Demographics						
Official Home Language	English		English		English	
Dominant non-official language	Italian		Italian		Italian	

DEMOGRAPHICS

439 GREAT NORTHERN ROAD

2025 Estimates Visible Minority	0 - 5 km		0 - 10 km		0 - 25 km	
		%		%		%
2025 Household Population by visible minority groups	59,847	%base	77,663	%base	85,830	%base
Total visible minority population	2,975	5.0%	3,957	5.1%	4,019	4.7%
Chinese	335	0.6%	579	0.7%	595	0.7%
South Asian	1,133	1.9%	1,355	1.7%	1,387	1.6%
Black	640	1.1%	758	1.0%	758	0.9%
Filipino	217	0.4%	217	0.3%	217	0.3%
Latin American	219	0.4%	293	0.4%	293	0.3%
Southeast Asian	68	0.1%	83	0.1%	83	0.1%
Arab	80	0.1%	175	0.2%	175	0.2%
West Asian	89	0.1%	89	0.1%	89	0.1%
Korean	64	0.1%	155	0.2%	155	0.2%
Japanese	25	0.0%	59	0.1%	59	0.1%
Visible minority, n.i.e.	71	0.1%	112	0.1%	112	0.1%
Multiple visible minorities	35	0.1%	82	0.1%	96	0.1%
Not a visible minority	56,872	95.0%	73,706	94.9%	81,811	95.3%

2028 Projections Visible Minority	0 - 5 km		0 - 10 km		0 - 25 km	
		%		%		%
2028 Household Population by visible minority groups	59,181	%base	76,948	%base	85,371	%base
Total visible minority population	3,106	5.2%	4,138	5.4%	4,206	4.9%
Chinese	355	0.6%	611	0.8%	629	0.7%
South Asian	1,214	2.1%	1,454	1.9%	1,490	1.7%
Black	651	1.1%	770	1.0%	770	0.9%
Filipino	220	0.4%	220	0.3%	220	0.3%
Latin American	224	0.4%	301	0.4%	301	0.4%
Southeast Asian	71	0.1%	86	0.1%	86	0.1%
Arab	80	0.1%	183	0.2%	183	0.2%
West Asian	95	0.2%	95	0.1%	95	0.1%
Korean	64	0.1%	163	0.2%	163	0.2%
Japanese	27	0.0%	61	0.1%	61	0.1%
Visible minority, n.i.e.	71	0.1%	112	0.1%	112	0.1%
Multiple visible minorities	35	0.1%	82	0.1%	96	0.1%
Not a visible minority	56,076	94.8%	72,810	94.6%	81,165	95.1%