



For Lease

MOOREFIELD I, II & III

812, 808 & 804 Moorefield Park Drive,
Chesterfield County, Virginia



Moorefield I, II & III

Office Building Portfolio

- 3 office buildings totaling 145,766 SF
- New common area updates!
- Newly renovated move-in ready suites
- Amenity-rich area off of Midlothian Turnpike
- One mile west of Powhite Parkway
- Ample parking ratio at 4/1000
- New institutional ownership
- \$18.50/SF, full service



Park setting



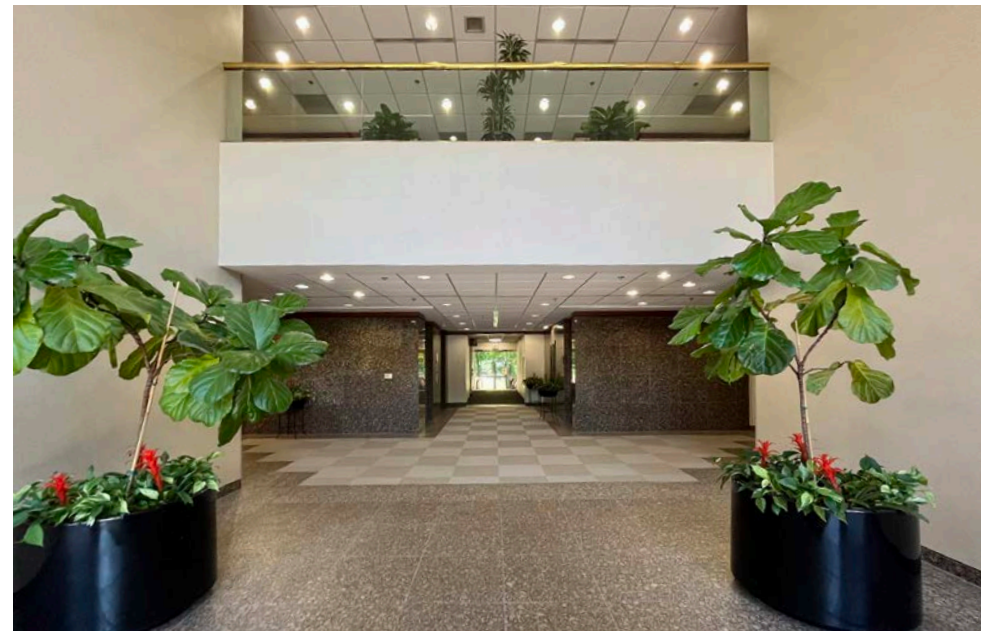
Walking paths



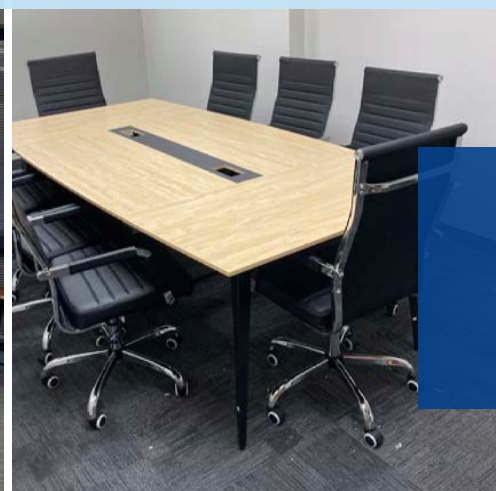
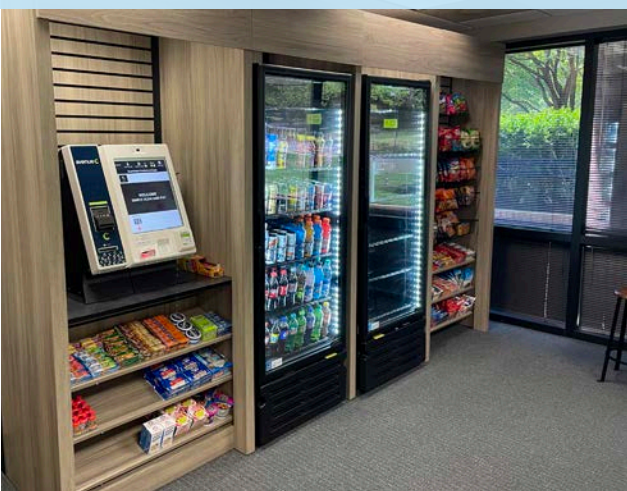
Lake views



Outdoor seating



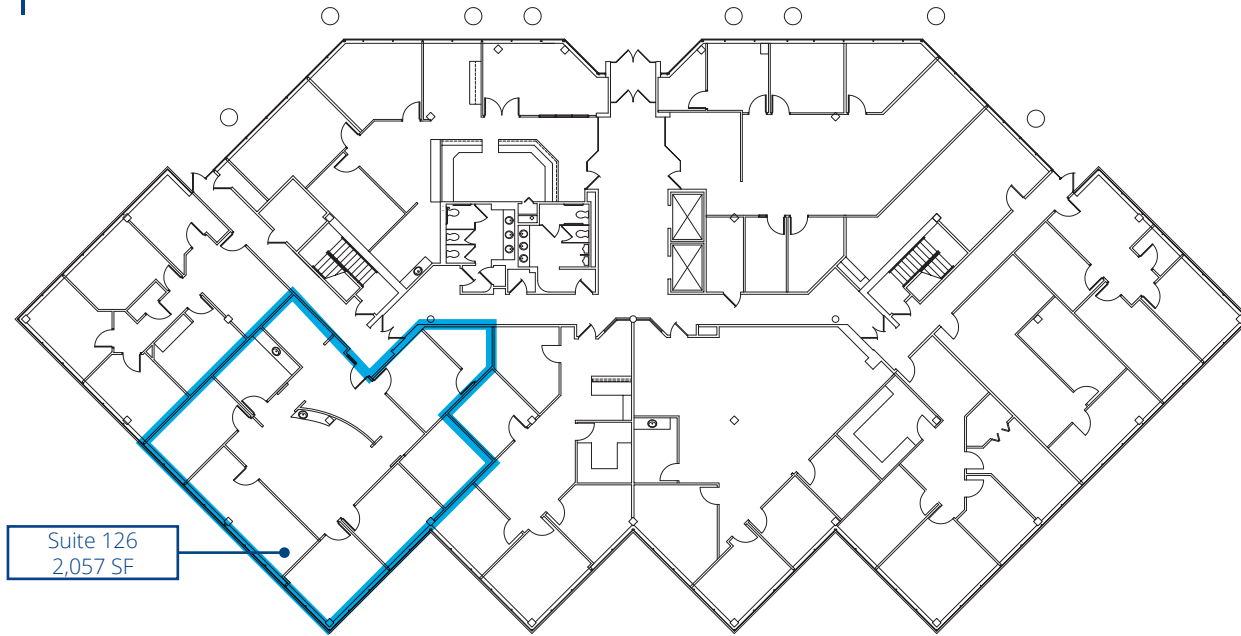
New on-site grab and go café & shared conference room



**Suites available for tenants from
1,234 SF to 7,708 SF**

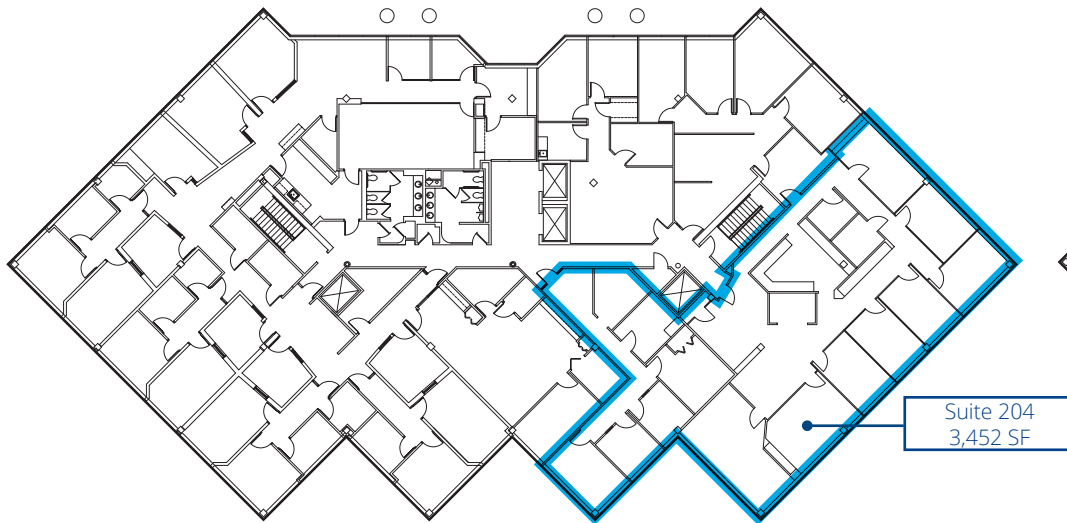
Moorefield I

First Floor

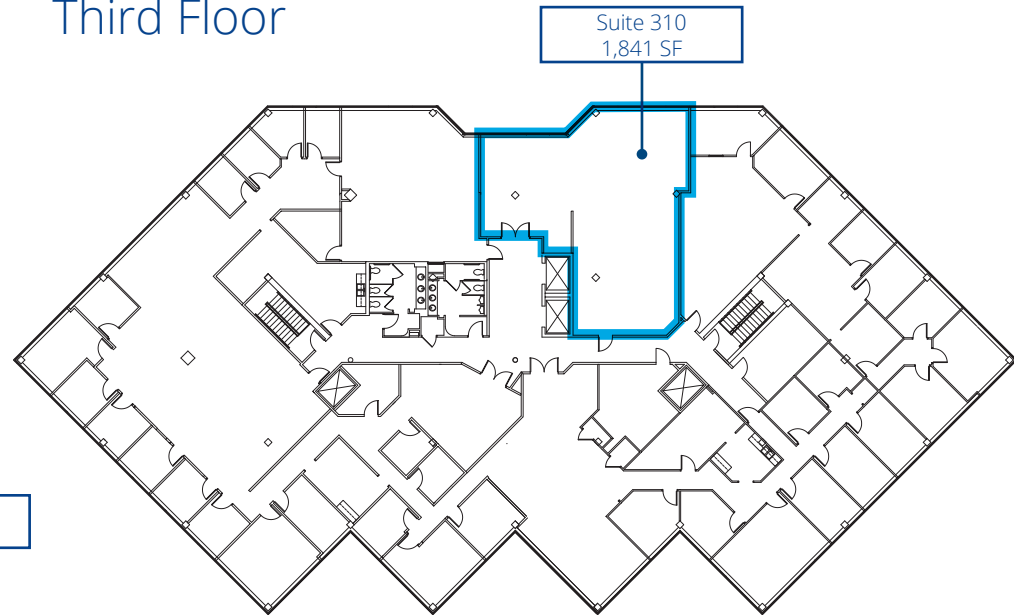


Suite	SF
126	2,057
204	3,452
310	1,841

Second Floor



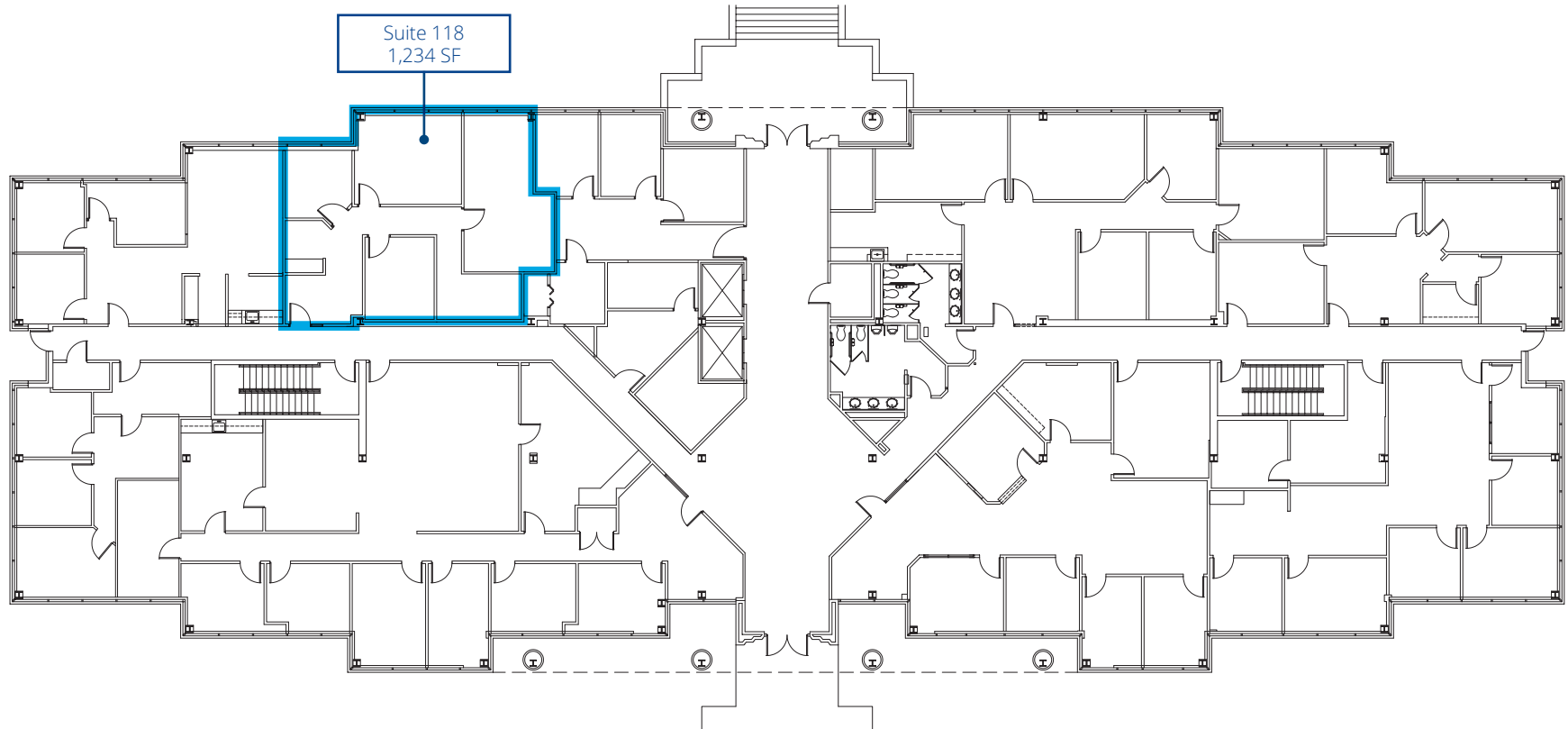
Third Floor



Moorefield II

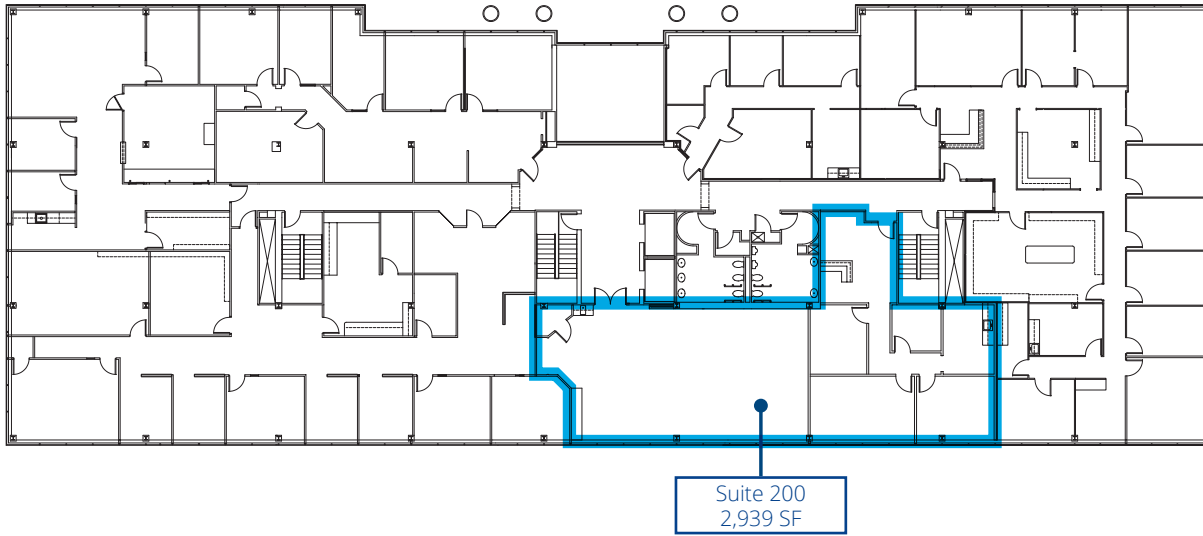
First Floor

Suite	SF
118	1,234



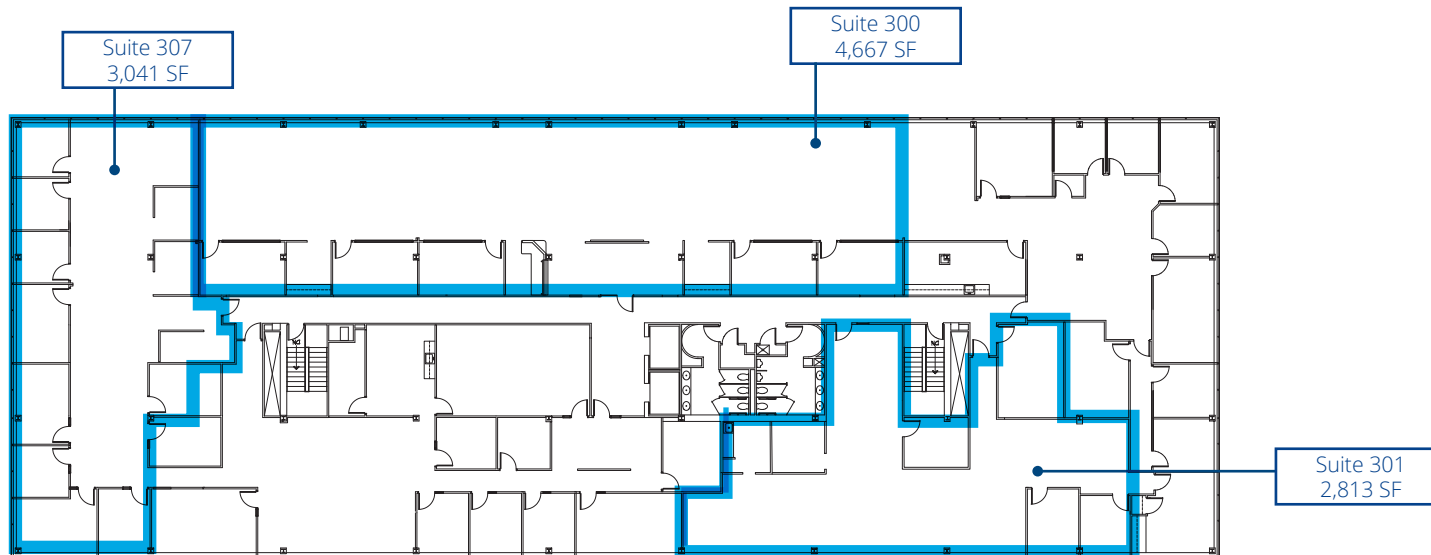
Moorefield III

Second Floor



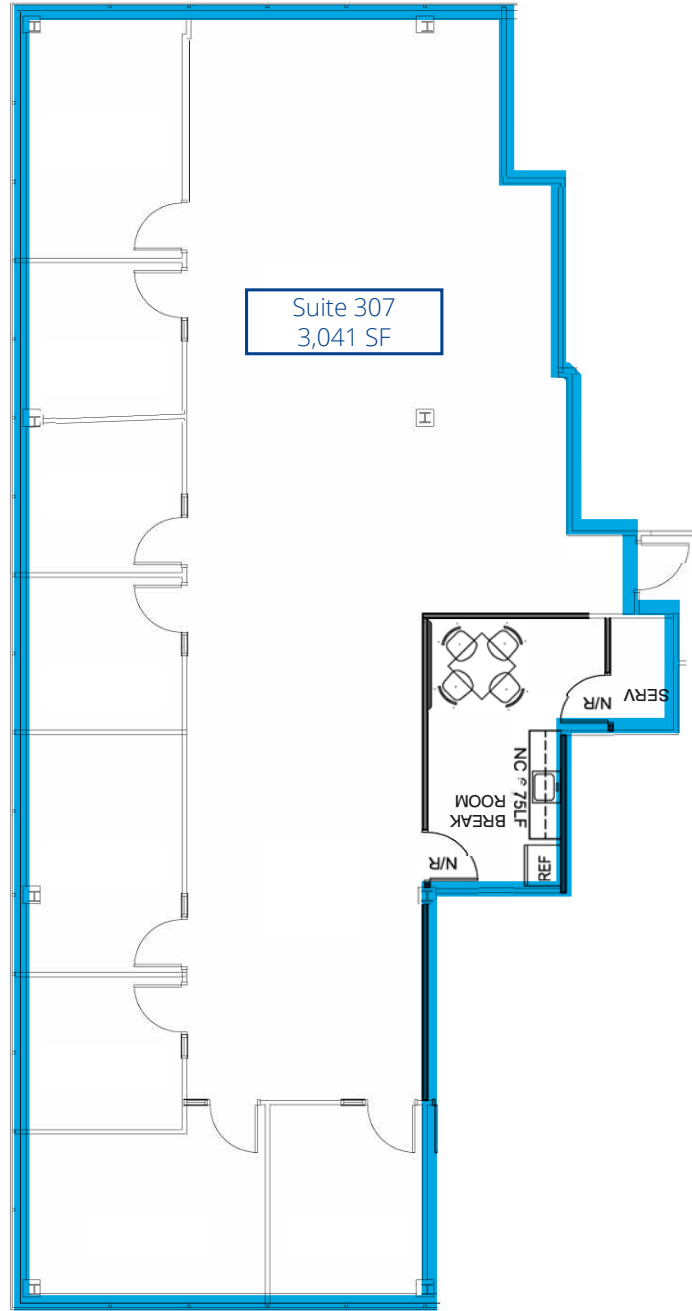
Suite	SF
200	2,939
300	4,667
301	2,813
307	3,041

Third Floor - Suites from 2,813 SF - 7,708 SF



Moorefield III

Third Floor - Spec Suite



Moorefield I, II & III



Drivetimes

Chesterfield Towne Center	4 mins
Johnston Willis Hospital	5 mins
Stony Point	13 mins.
Chippenham Hospital	10 mins.
Downtown Richmond	16 mins.
Richmond International Airport	30 mins.

Catherine Walker

Vice President
 +1 434 941 8341
 catherine.walker@colliers.com

Gray Bryant

Associate Vice President
 +1 804 237 8087
 gray.bryant@colliers.com

Rich McDaniel

Associate
 +1 804 320 7451
 richmond.mcdaniel@colliers.com



2221 Edward Holland Dr
 Suite 600 | Richmond, VA
 P: +1 804 320 5500
 colliers.com/richmond