

FLEX SPACE FOR LEASE

± 4,100 SF (Warehouse ± 2,070 SF, Office ± 2,030 SF)
6881 Kingspointe Pkwy, Unit 10, Orlando, FL 32819

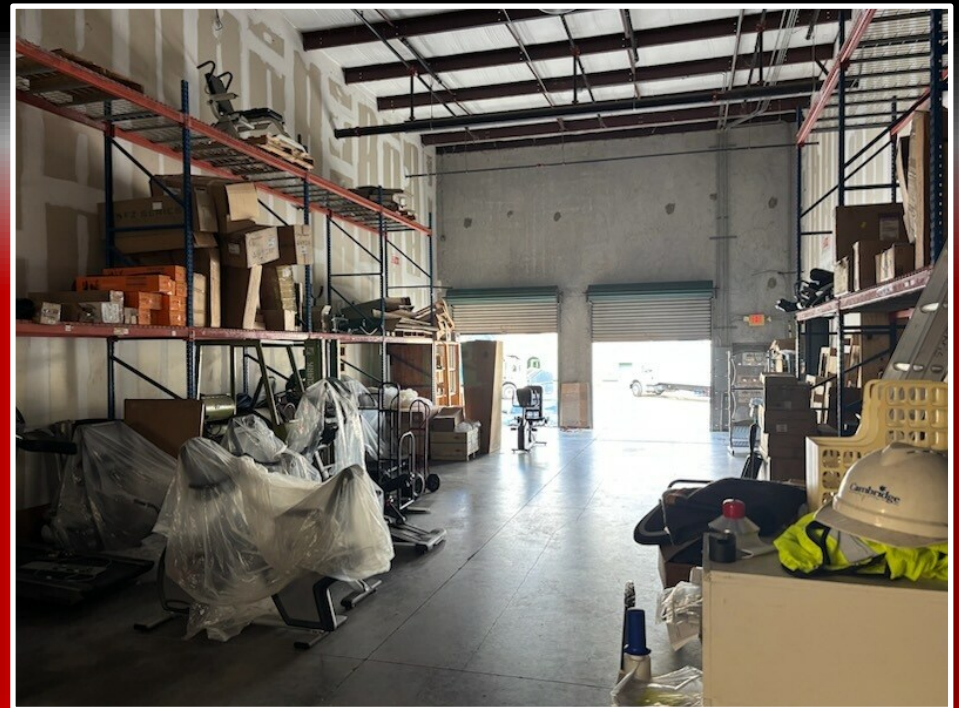
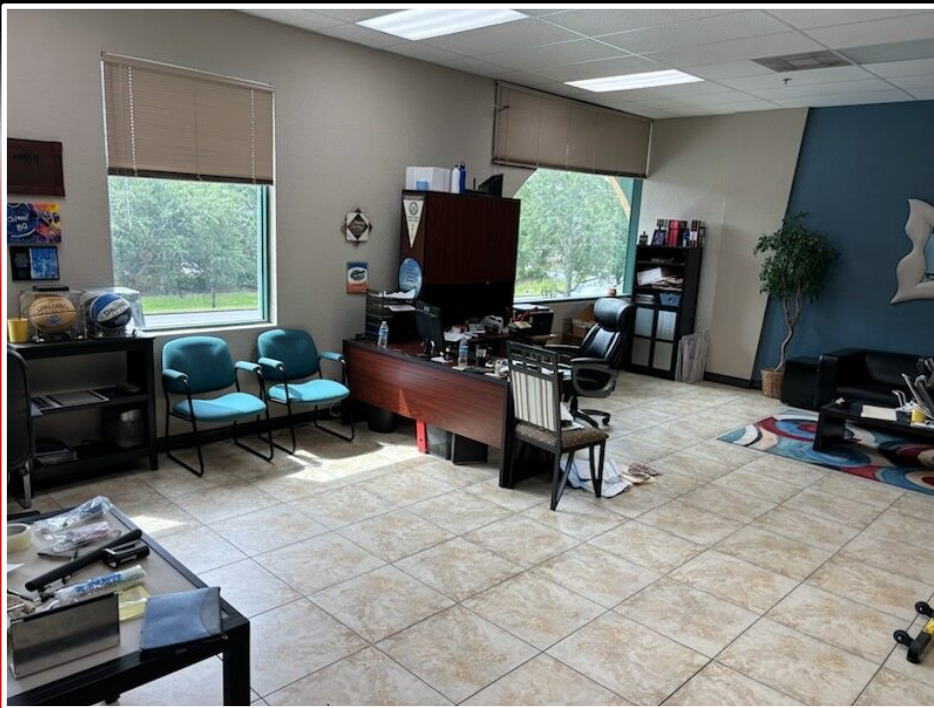


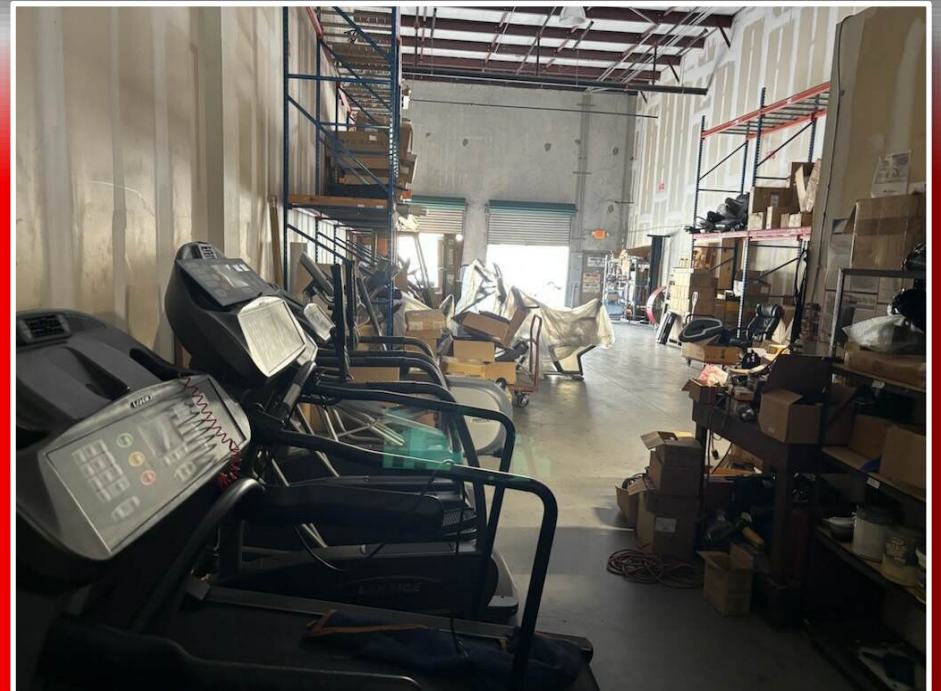
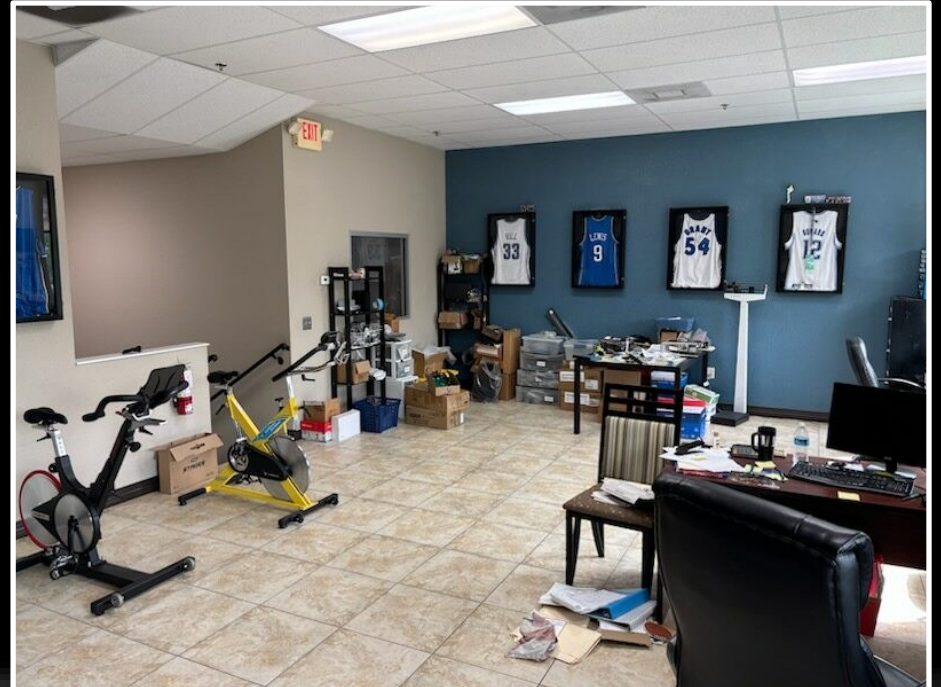
- Tailor-made for distribution, light manufacturing, service, or logistics enthusiasts!
- Situated in the vibrant Kingspointe Business Park, this property offers lightning-fast access to I-4, Florida's Turnpike, 408, and other major thoroughfares, providing swift connectivity to Downtown Orlando, Orlando International Airport, and the region's key distribution corridors.

Flex Unit - 4,100 SF nestled in one of Orlando's most strategically located business parks!

This unit boasts 2,030 +/- SF of sleek, professional office buildout and 2,070 +/- SF of versatile warehouse space.

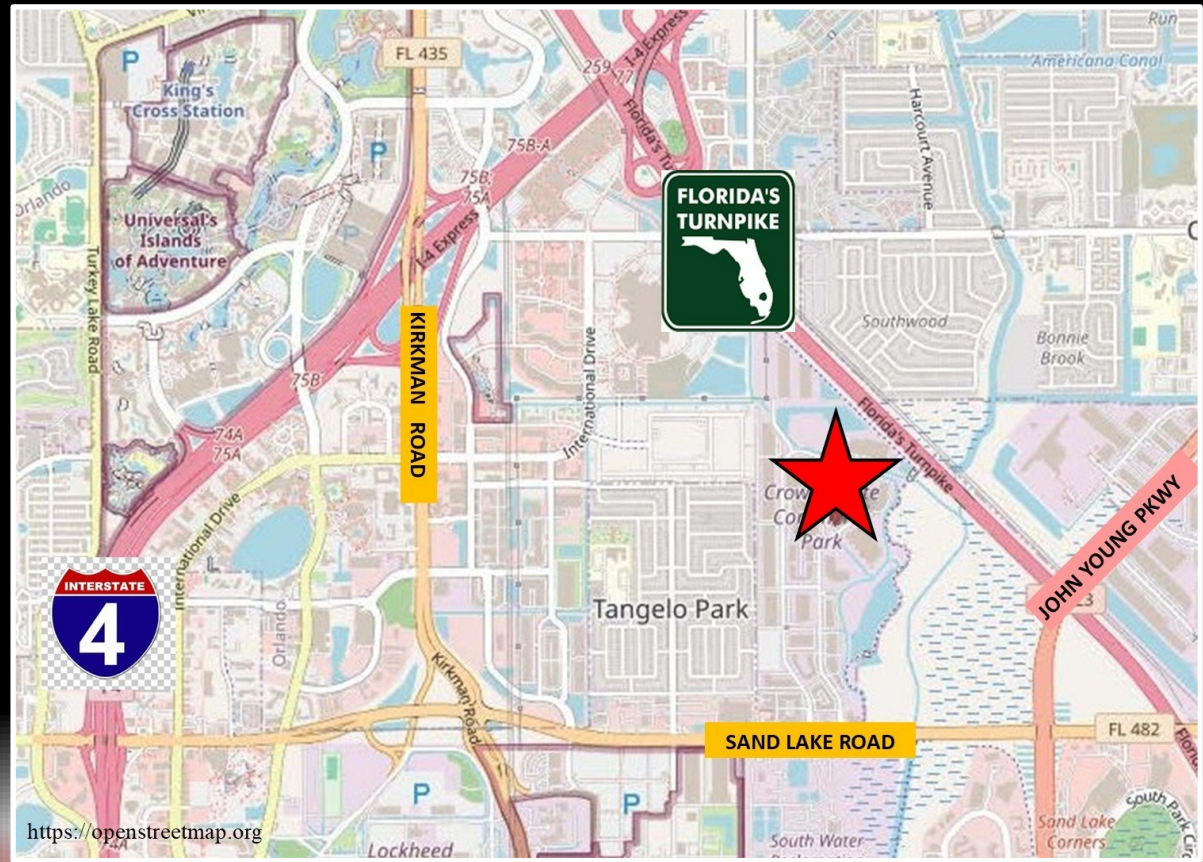
The Warehouse features two dock-loading doors and robust 3-phase 200A/208V power with an impressive 23-25 foot clear height , ensuring seamless operations and equipment efficiency.





Unit Size	±4,100 sf
Warehouse Size	±2,070 sf
Office Size	±2,030sf
Year Built	2006
Power	3 Phase 200A/208V
Ceiling Height	23-25 ft
Roll-up Doors	(2) 9'x10' Dock
Lease Rate	\$20/ SF NNN

(Expenses \$6.50 PSF)



Greg Kainz
(407) 310-2718
gkainz@cepadvisors.com



David Lundberg
(407) 701-4400
dlundberg@cepadvisors.com



LEGAL DISCLAIMER:

INFORMATION GIVEN HERewith IS OBTAINED FROM SOURCES CONSIDERED RELIABLE; HOWEVER, WE ARE NOT RESPONSIBLE FOR MISSTATEMENT OF FACTS, ERRORS, OMISSIONS, PRIOR SALE, AND WITHDRAWAL FROM MARKET, CHANGE IN PRICE OR AVAILABILITY WITHOUT NOTICE. THE INFORMATION SUPPLIED HEREIN IS FOR INFORMATION PURPOSES ONLY AND SHALL NOT CONSTITUTE A WARRANTY OR ASSURANCE THAT SAID INFORMATION IS CORRECT. ANY PERSON INTENDING TO RELY UPON THE INFORMATION SUPPLIED HEREIN SHOULD VERIFY SAID INFORMATION INDEPENDENTLY.