

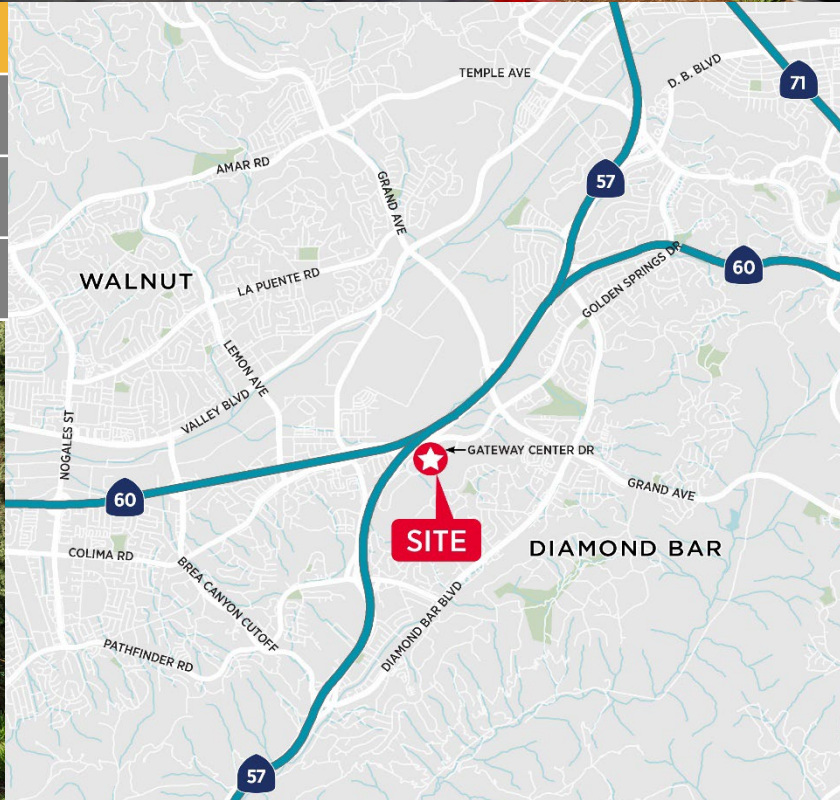
GATEWAY CORPORATE CENTER

21680 Gateway Center Drive | Diamond Bar | CA



LEASE RATE: \$3.25 FSG

SUITE	SQ. FT.	AVAILABLE
230	2,596	Now
310	2,370	Now



For more information, please contact:

SEAN KERN

909.942.4691
sean.kern@cushwake.com
Lic. #01377294

RYAN RUSSELL

909.942.4697
ryan.russell@cushwake.com
Lic. #01505274

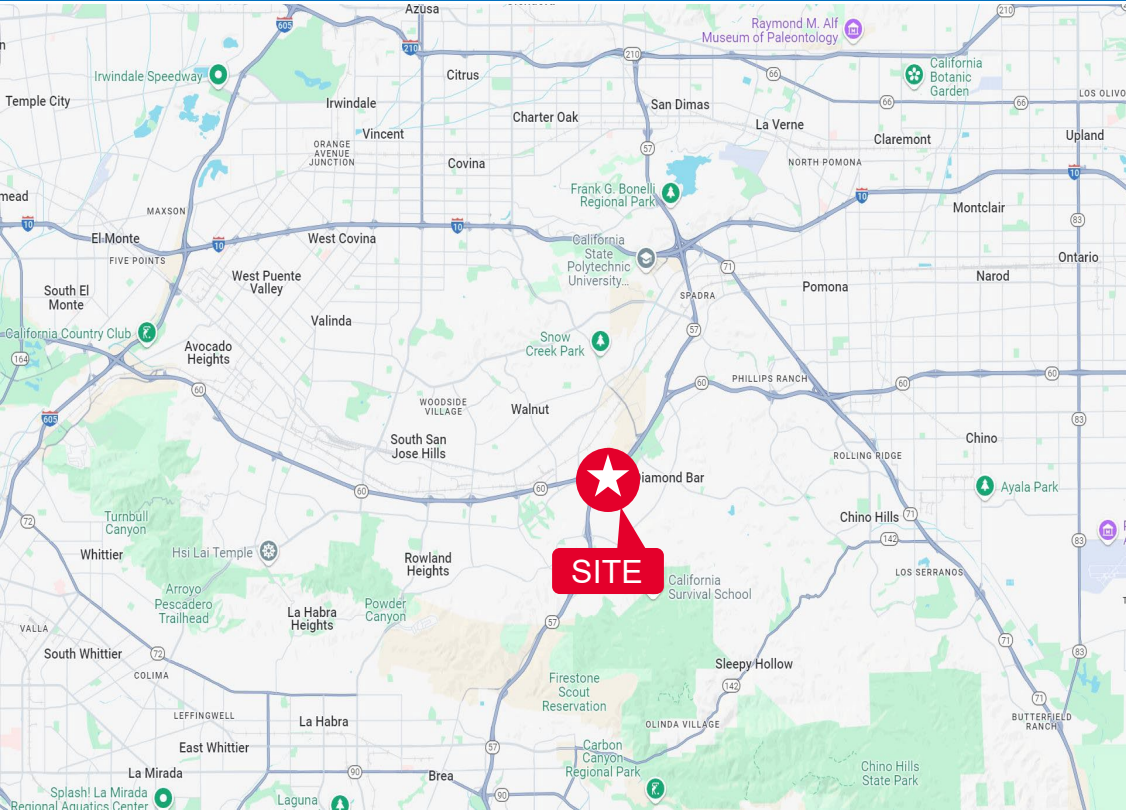
RYAN CAMPBELL

909.348.0606
rcampbell@naicapital.com
Lic. #01341826



GATEWAY CORPORATE CENTER

21680 Gateway Center Dr | Diamond Bar | California



FEATURES:

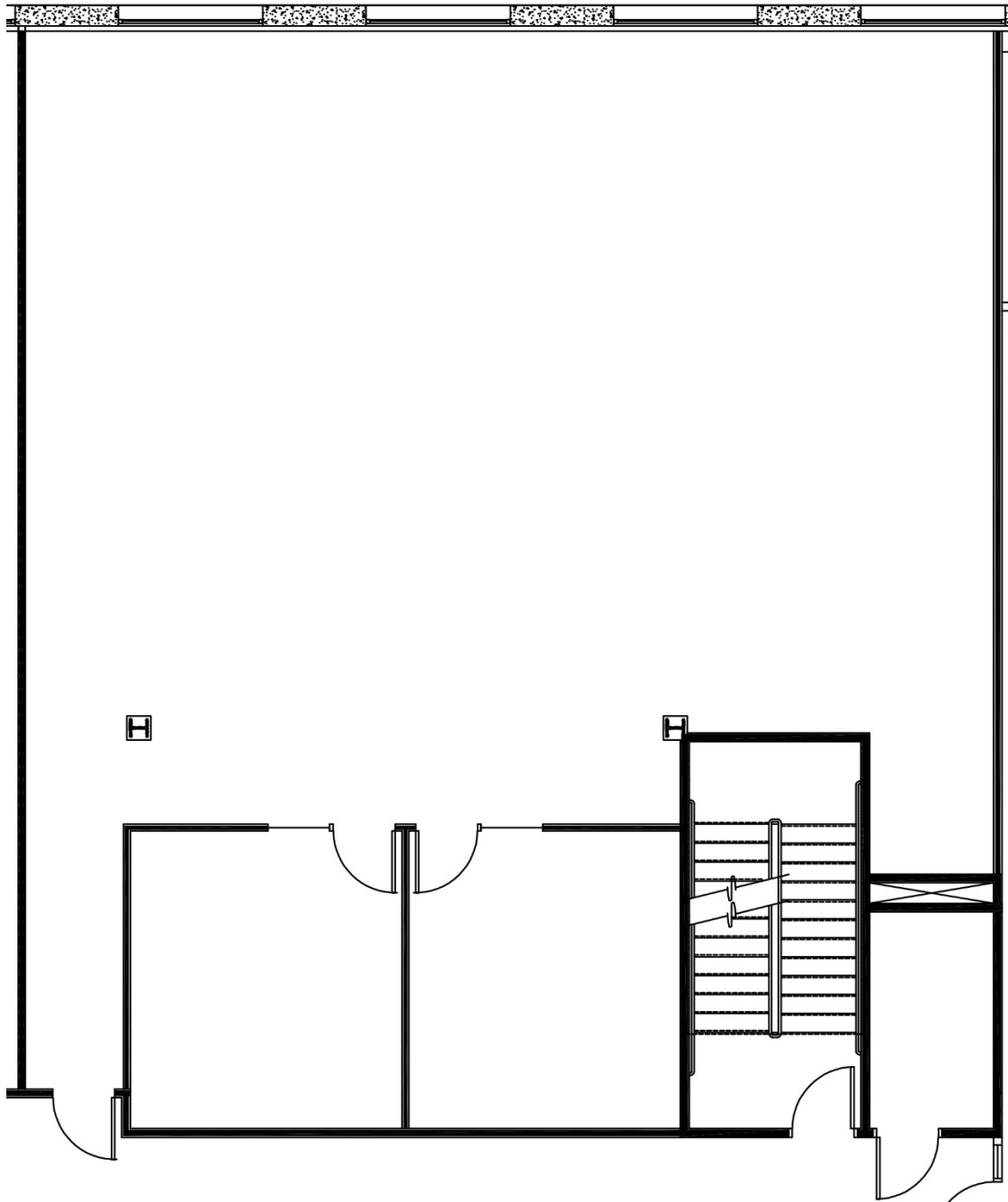
- Located minutes from the 57, 10, 60 & 71 Freeways
- Centrally located – Gateway to four counties
- Close to Ontario International Airport, hotels, restaurants, business services and retail
- Campus-like environment
- Professionally managed
- 24-Hour access
- Outdoor seating
- 5/1000 parking
- On-site deli



GATEWAY CORPORATE CENTER

21680 Gateway Center Dr | Diamond Bar | California

Suite 230 | 2,596 SF | 1 office, 1 conference room, storage room, open office area



For more information, please contact:

SEAN KERN

909.942.4691
sean.kern@cushwake.com
Lic. #01377294

RYAN RUSSELL

909.942.4697
ryan.russell@cushwake.com
Lic. #01505274

RYAN CAMPBELL

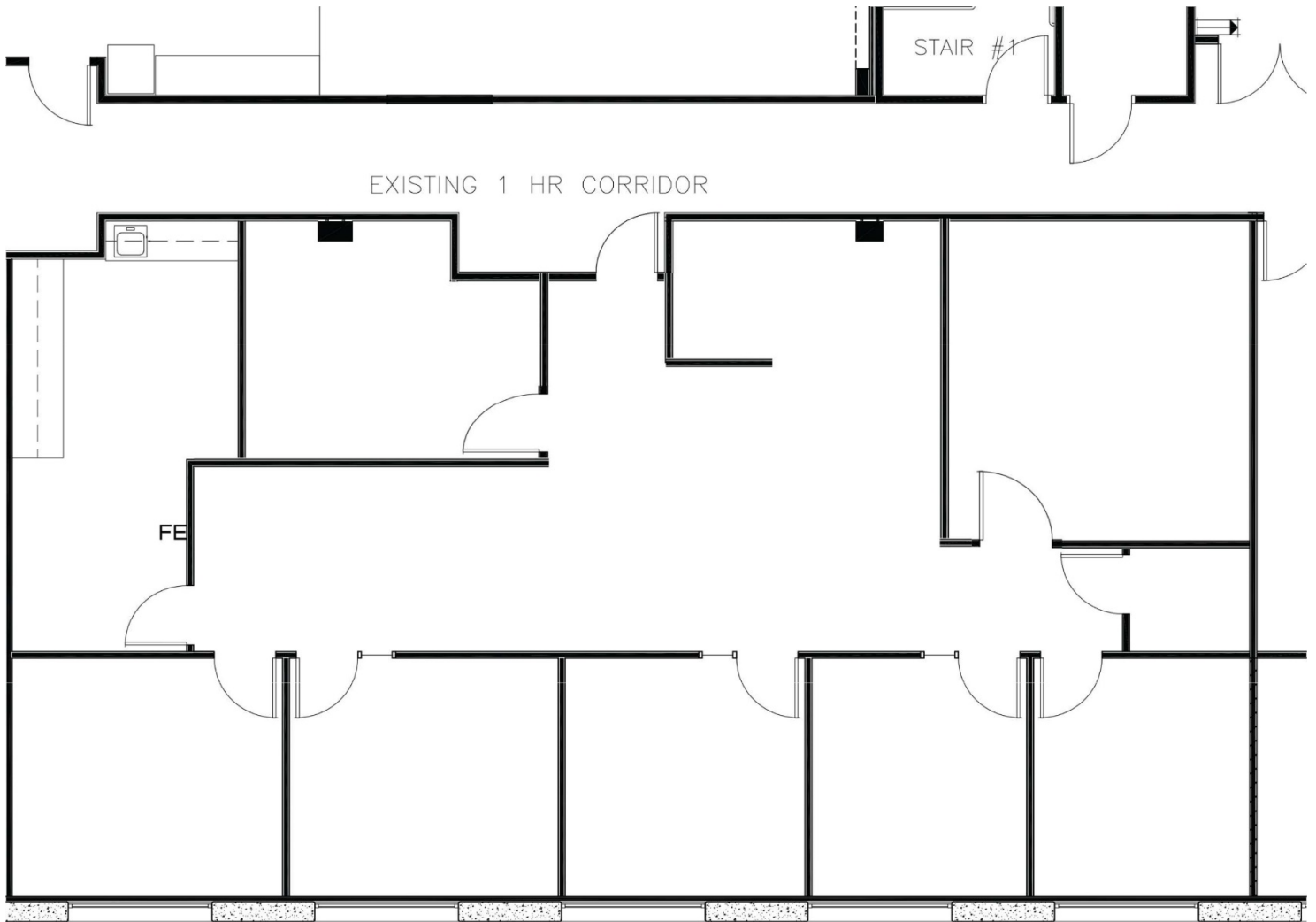
909.348.0606
rcampbell@naicapital.com
Lic. #01341826



GATEWAY CORPORATE CENTER

21680 Gateway Center Dr | Diamond Bar | California

Suite 310 | 2,370 SF | Available Now



For more information, please contact:

SEAN KERN

909.942.4691
sean.kern@cushwake.com
Lic. #01377294

RYAN RUSSELL

909.942.4697
ryan.russell@cushwake.com
Lic. #01505274

RYAN CAMPBELL

909.348.0606
rcampbell@naicapital.com
Lic. #01341826

