



205  
-215  
LEXINGTON

FURNISHED & WIRED FULL FLOOR

215 LEXINGTON — ENTIRE 18TH FLOOR

# TURNKEY WORKSPACE WITH SWEEPING SKYLINE VIEWS

AN ELEVATED WORKSPACE CRAFTED FOR TEAMS LOOKING TO HIT THE GROUND RUNNING—FEATURING ERGONOMIC WORKSTATIONS, MODERN FINISHES, AND A PRIVATE TERRACE WHERE YOU CAN ENJOY STUNNING CITY VIEWS.

SPACE  
18TH FLOOR

SIZE  
6,670 SQ FT

RENT  
INQUIRE

TERM  
NEGOTIABLE



205  
-215  
LEXINGTON

# PHOTO GALLERY



# FLOOR PLAN

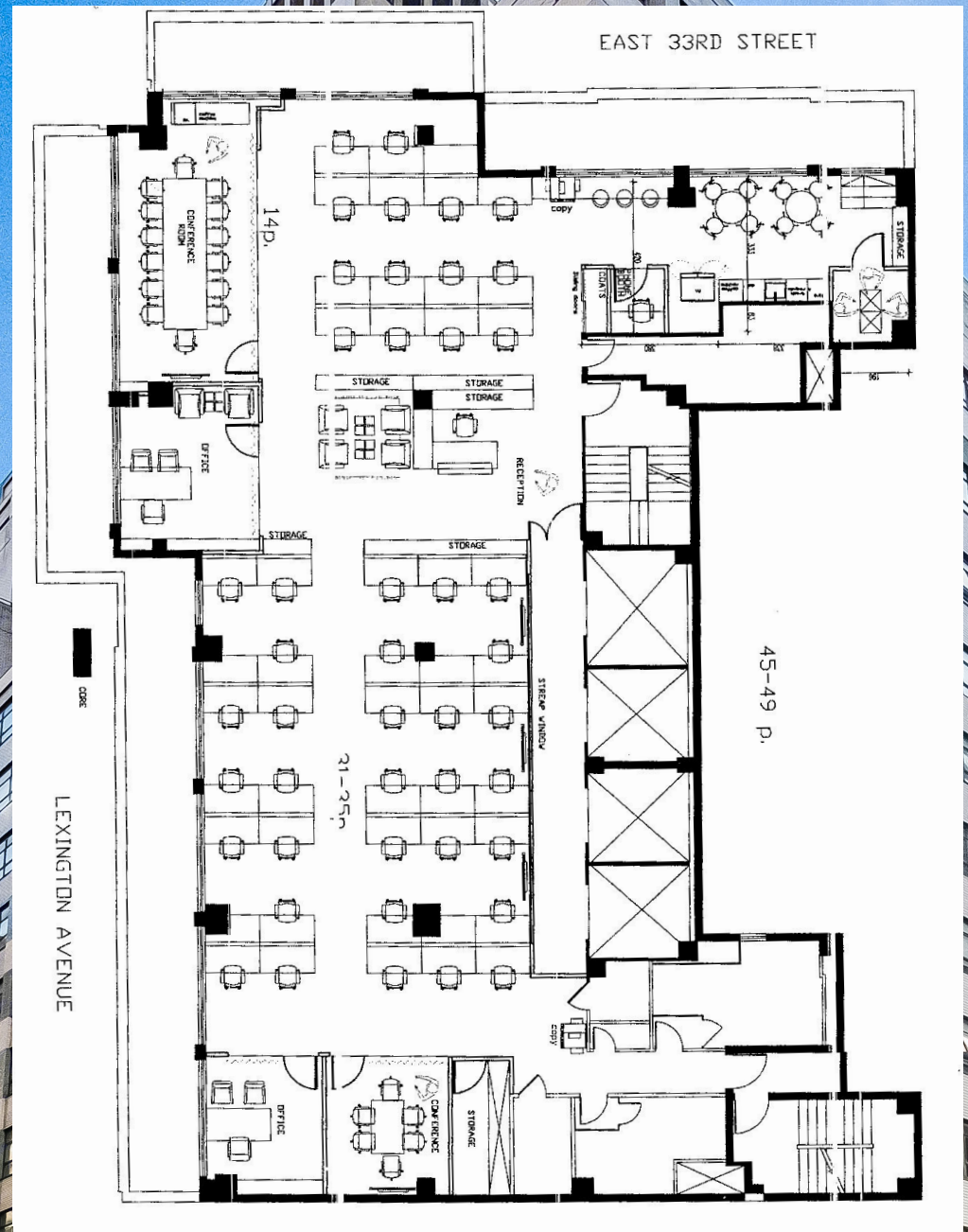
6,670 SQUARE FEET

1 GLASS-FRONTED CONFERENCE ROOM

3 GLASS-FRONTED MEETING ROOMS

45 SIT-STAND WORKSTATIONS

1 PANTRY WITH BAR HEIGHT SEATING



# NEIGHBORHOOD & TRANSIT

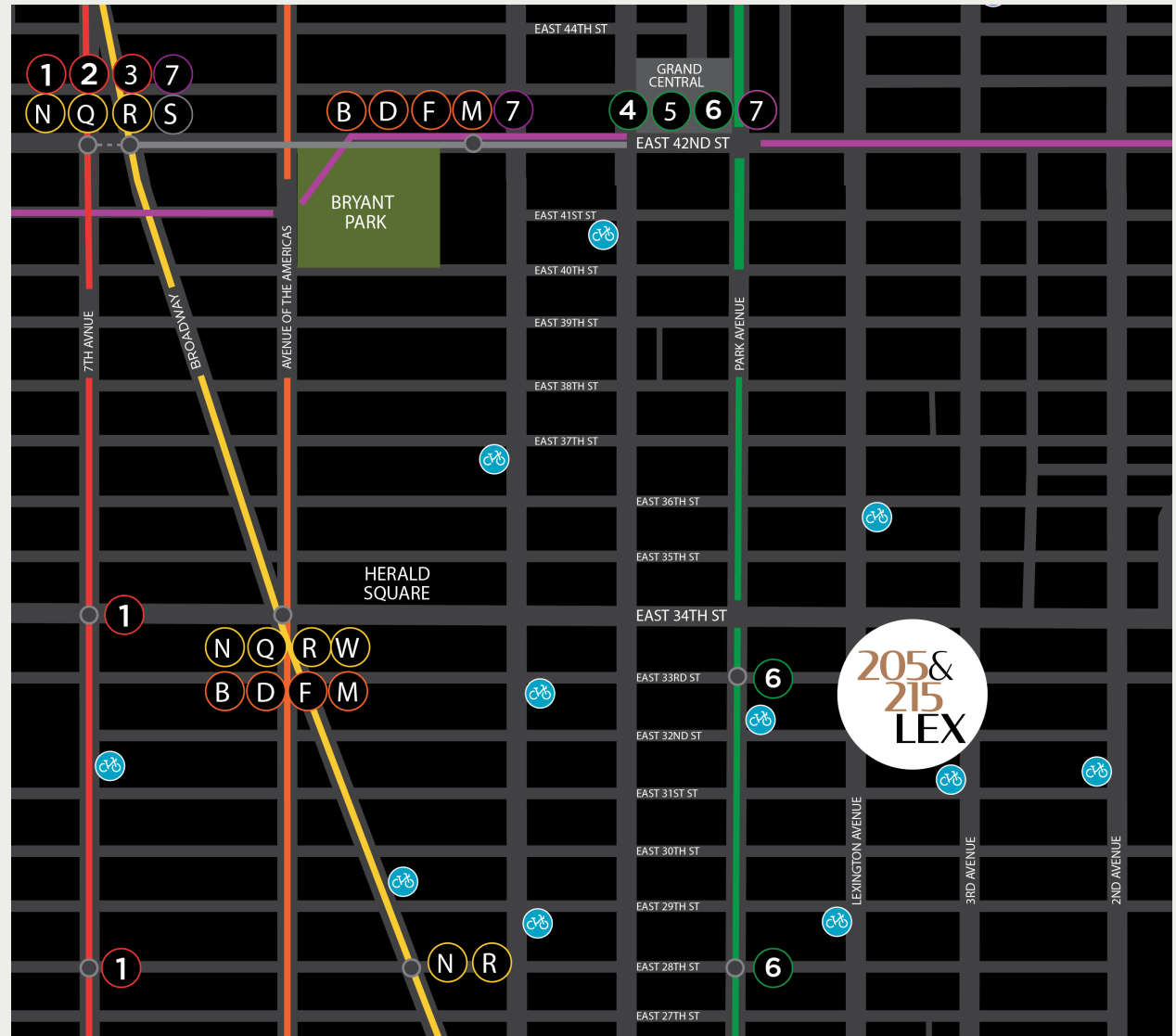
CLOSE TO MAJOR TRANSIT HUBS AND  
SUBWAY CONNECTIONS. LESS THAN  
15 MINUTES FROM METRONORTH,  
LIRR, PATH, NJ TRANSIT, AND AMTRAK.

1 STOP FROM  
GRAND CENTRAL

2 MINUTE WALK TO  
THE M34 SBS STOP

10 MINUTE WALK  
TO PENN

8 MINUTE WALK  
TO 33RD ST PATH



205  
-215  
LEXINGTON

## LEASING CONTACT

JARED STERNBERG  
KAUFMAN LEASING CO.  
212.471.4352  
JAREDS@KFMN.NYC



**THE SOMERSET GROUP**  
INVESTMENT | DEVELOPMENT | MANAGEMENT