

Grenoble Commerce Center

2,064 SF Up To 13,527± SF Available

2419 Grenoble Road
Richmond, Virginia 23294

\$12.00/SF, NNN (\$1.20/SF) - Ability To Subdivide



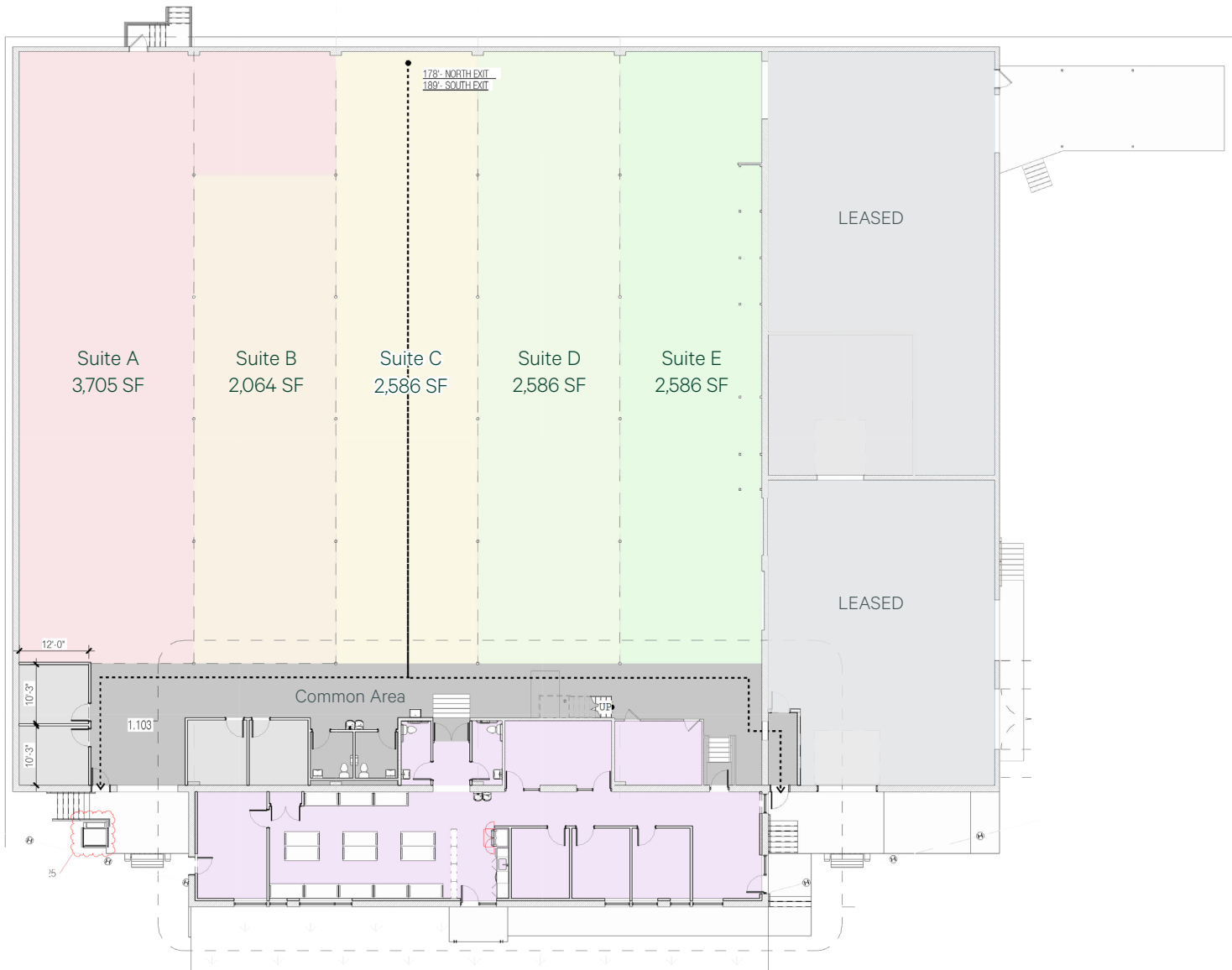
Grenoble Commerce Center

2419 Grenoble Road | Richmond, Virginia 23294

Property Features

- + 23,189 SF industrial warehouse located in the Staples Mill/ Parham Road corridor
- + Flexible warehouse bays ranging from 2,064 SF to 3,705 SF
- + M-1 Light Industrial Zoning
- + 12' clear heights for versatile storage and operations
- + Features 3 loading dock positions, including 2 truck-height docks
- + Ample on-site parking available
- + Excellent connectivity with proximity to I-64 and Glenside Drive
- + For Lease: \$12.00/SF, NNN (\$1.20/SF)

Floor Plan





23K

Total Building SF

12'

Clear Heights

M-1

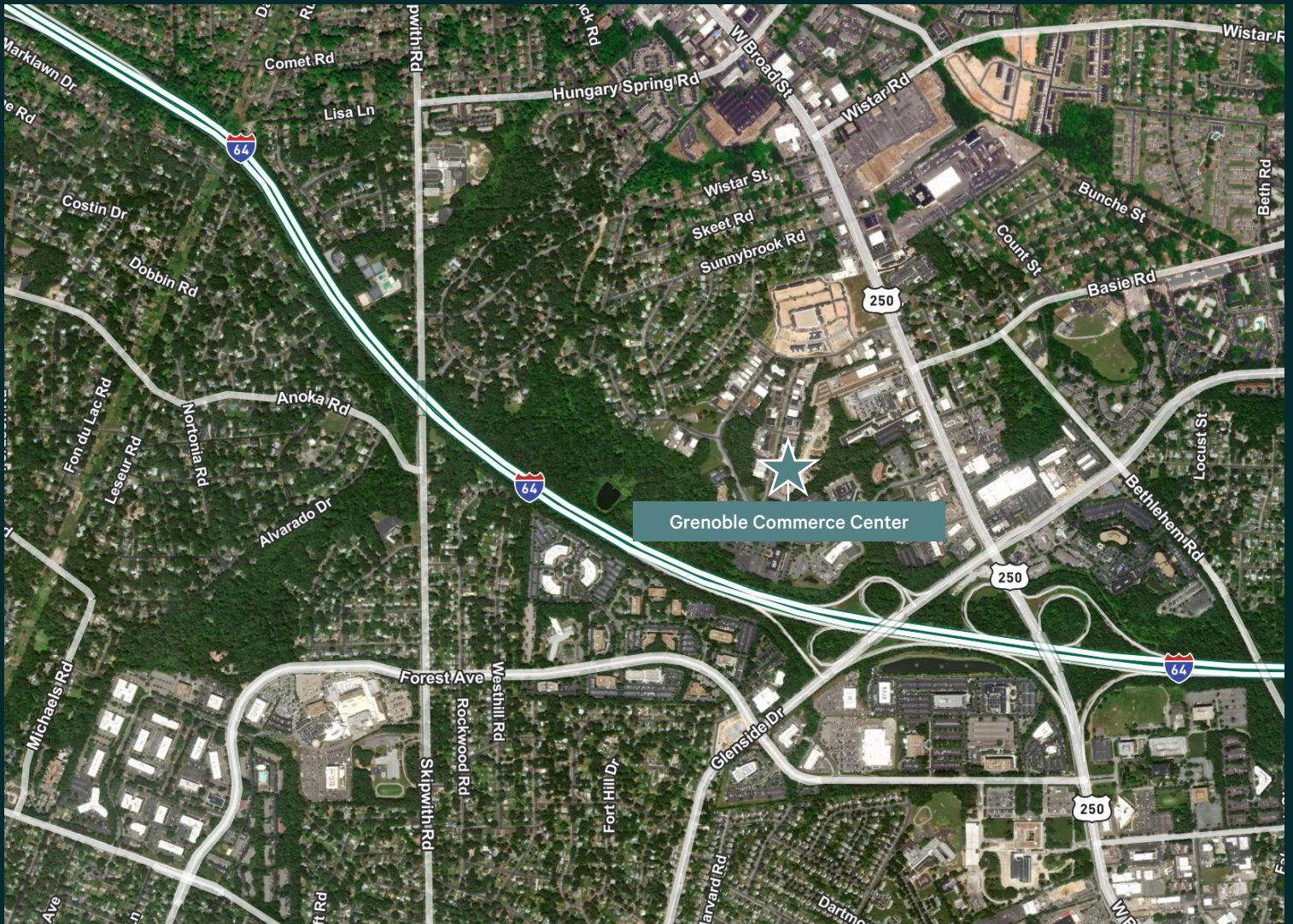
Light Industrial Zoning District

Area Demographics	1 Mile	3 Miles	5 Miles
Population	10,032	96,849	226,386
Households	4,139	40,172	97,450
Average Household Income	\$89,467	\$107,277	\$119,412
Businesses	1,581	8,833	16,291
Employees	15,274	74,131	143,177

Grenoble Commerce Center

2419 Grenoble Road | Richmond, Virginia 23294

For Lease



Contact Us

Matt Hamilton

Senior Vice President

+1 804 401 4005

matt.hamilton@cbre.com

CBRE

1802 Bayberry Court

Suite 201

Richmond, VA 23226

© 2026 CBRE, Inc. All rights reserved. This information has been obtained from sources believed reliable, but has not been verified for accuracy or completeness. You should conduct a careful, independent investigation of the property and verify all information. Any reliance on this information is solely at your own risk. CBRE and the CBRE logo are service marks of CBRE, Inc. All other marks displayed on this document are the property of their respective owners, and the use of such logos does not imply any affiliation with or endorsement of CBRE. Photos herein are the property of their respective owners. Use of these images without the express written consent of the owner is prohibited.