

100 N 1ST STREET
Burbank, CA

OFFICE SPACES
FOR LEASE



LEE & ASSOCIATES
COMMERCIAL REAL ESTATE SERVICES
Corporate ID #01191898

TODD WUSCHNIG
Principal
818.933.0301

twuschnig@lee-re.com
DRE #01367230

JENNIFER DONALDSON
Principal
818.933.0347

jdonaldson@lee-re.com
DRE #01317737

100 N 1ST STREET

Burbank, CA

OFFICE SPACES FOR LEASE



PROPERTY DETAILS

Location: 100 N 1st Street

Availability: Suite 400 - 5,197 SF
Suite 402 - 2,581 SF

**Suite 400 is divisible down to 803 SF*

***Suites 400 & 402 are contiguous for a total of 7,778 SF*

Lease Rate: \$3.30/RSF Full Service Gross

Parking: 5/1,000 SF at \$95/mo. (Unreserved)

SUITE HIGHLIGHTS

- Private Balconies
- Kitchen
- Corner Suite with Great Window Line
- Light and Bright Suite

PROPERTY HIGHLIGHTS

- Prime Downtown Burbank Location
- On-site Dog Park
- Beautiful Landscaping and Outdoor Seating Areas
- Immediate Access to the 5 Freeway
- Bus Lines and Metrolink Nearby
- Public Parking Lot with Free 2-Hour Parking Across the Street
- Walking Distance to many Restaurants, Banking, Shopping and more!



100 N 1ST STREET
Burbank, CA

OFFICE SPACES
FOR LEASE



100 N 1ST STREET
Burbank, CA

OFFICE SPACES
FOR LEASE



100 N 1ST STREET
Burbank, CA

OFFICE SPACES
FOR LEASE



100 N 1ST STREET Burbank, CA

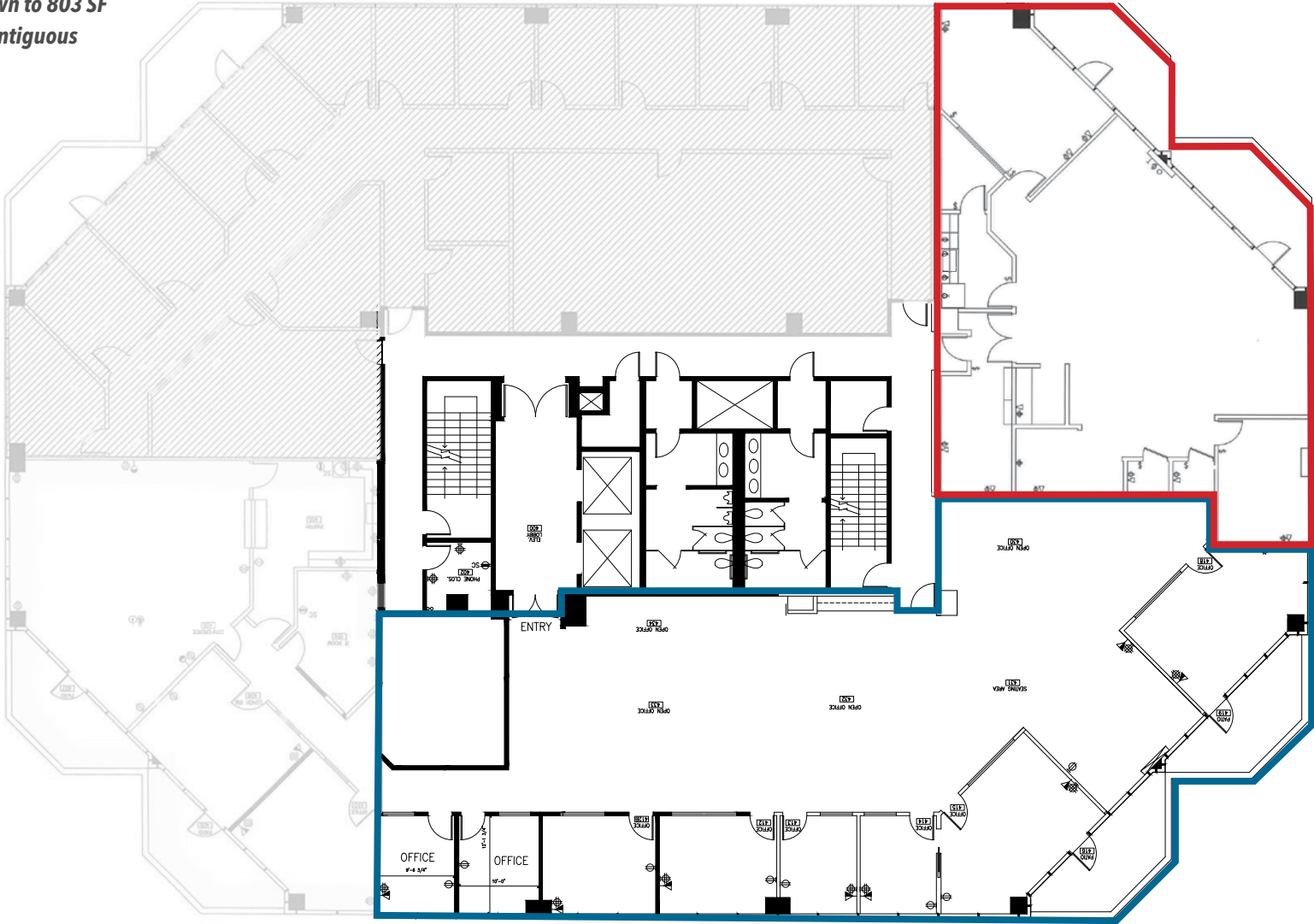
OFFICE SPACES FOR LEASE

Suite 400 - 5,197 SF

Suite 402 - 2,581 SF

**Suite 400 is divisible down to 803 SF*

****Suites 400 & 402 are contiguous
for a total of 7,778 SF**



NOT TO SCALE

100 N 1ST STREET Burbank, CA

OFFICE SPACES FOR LEASE

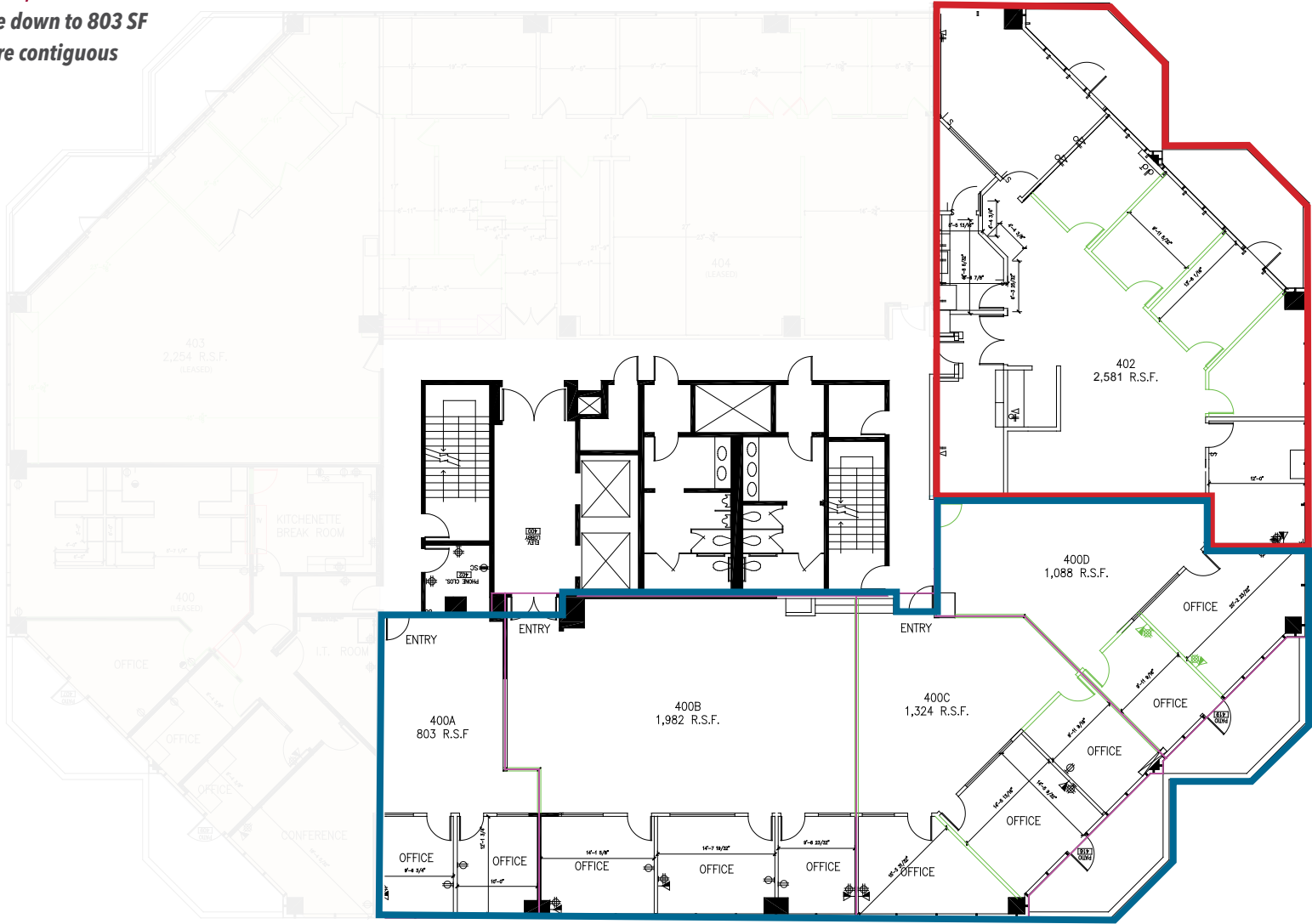
Suite 400 - 5,197 SF

Suite 402 - 2,581 SF

**Suite 400 is divisible down to 803 SF*

***Suites 400 & 402 are contiguous
for a total of 7,778 SF*

Hypothetical Plans



100 N 1ST STREET
Burbank, CA

OFFICE SPACES
FOR LEASE



100 N 1ST ST
BURBANK, CALIFORNIA

S SAN FERNANDO BLVD

ORANGE GROVE AVE

WOOD RANCH
BBQ & GRILL

N 1ST ST

OLIVE AVE

Logix

100 N 1ST STREET Burbank, CA

OFFICE SPACES FOR LEASE



For leasing information
please contact:

Todd Wuschnig

Principal
818.933.0301
twuschnig@lee-re.com
DRE #01367230

Jennifer Donaldson

Principal
818.933.0347
jdonaldson@lee-re.com
DRE #01317737

Lee & Associates® - LA North/Ventura, Inc.
A Member of the Lee & Associates® Group of Companies • Corporate ID #01191898
15060 Ventura Blvd., Suite 100 • Sherman Oaks, CA 91403 • P:818.986.9800
F:818.783.9260 • www.leelanorth.com



All information furnished regarding the property is from sources deemed reliable, but no warranty or representation is made as to the accuracy thereof. This information is submitted subject to errors, omissions, change of price or terms, prior sale or lease, or withdrawal without notice. No liability of any kind is to be imposed on the broker herein.