

SEMI-FURNISHED SUBURBAN OFFICE SPACE



6 ROSLYN ROAD

WINNIPEG, MB

FOR SALE/LEASE



PRESLEY BORDIAN, Vice President, Sales & Leasing
(204) 985-1356
presley.bordian@capitalgrp.ca

RENNIE ZEGALSKI, Principal
(204) 985-1368
rennie.zegalski@capitalgrp.ca
Services provided by Rennie Zegalski Personal Real Estate Corporation

PROPERTY DETAILS

BUILDING AREA (+/-)	9,177 sq. ft.
LAND AREA (+/-)	10,229 sq. ft.
AREA AVAILABLE (+/-)	Unit 101: 2,709 sq. ft.
GROSS RENT	\$23.00 per sq. ft. (inclusive of common area, maintenance, property tax and utilities)
SALE PRICE	\$1,500,000
PROPERTY TAXES	\$36,742.78 (2026)
STOREYS	4
ZONING	RMFM - Res - Multifamily
YEAR BUILT	1914
ROLL NO.	12032443000
PARKING	21 on-site parking stalls
TRAFFIC COUNT	8,800 (average daily traffic count on Elizabeth Road) (2024 City of Winnipeg Traffic Flow Map)
AVAILABILITY	Immediately

HIGHLIGHTS

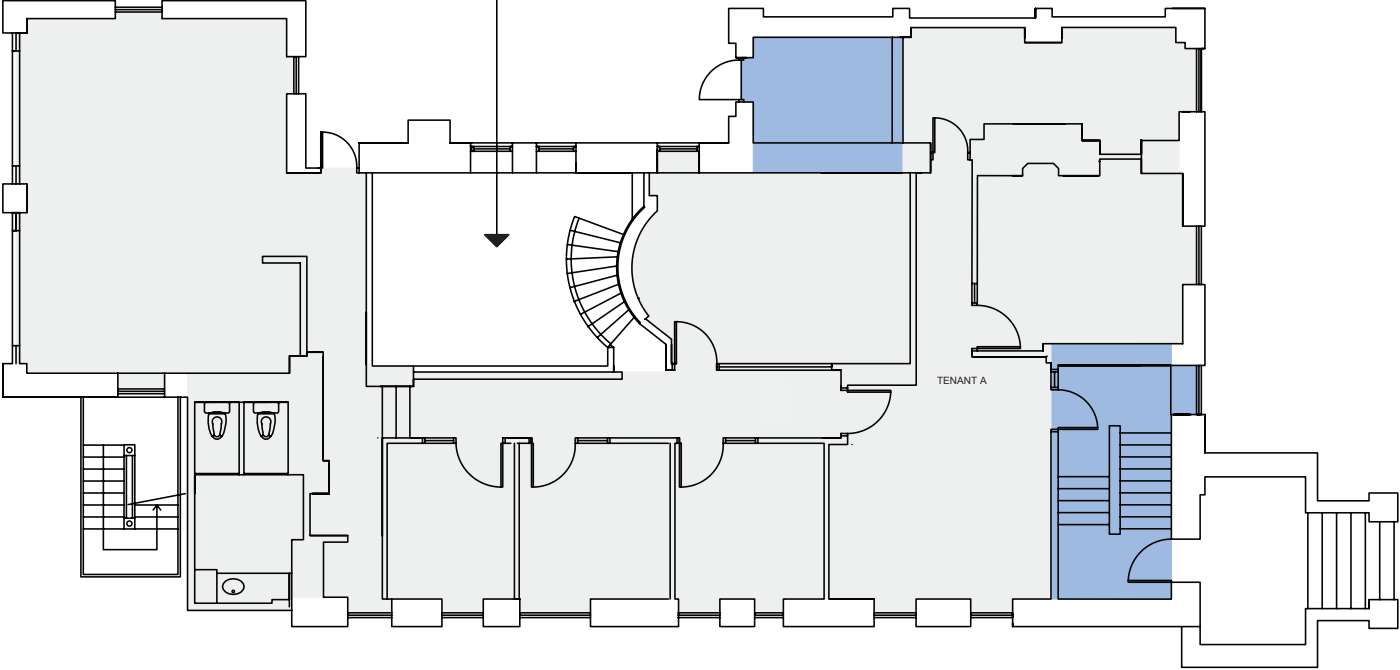
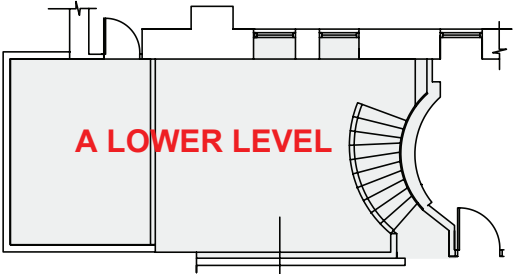
- Opportunity for end user to occupy Unit 101: 2,709 sq. ft.
- Suburban office with build-out improvements in-place
- Steps away from the many shops and restaurants of Osborne Village
- On-site reserved parking for staff and guests; parking revenue in-place
- Stable income with favourable lease terms in-place



FLOOR PLAN

FIRST FLOOR

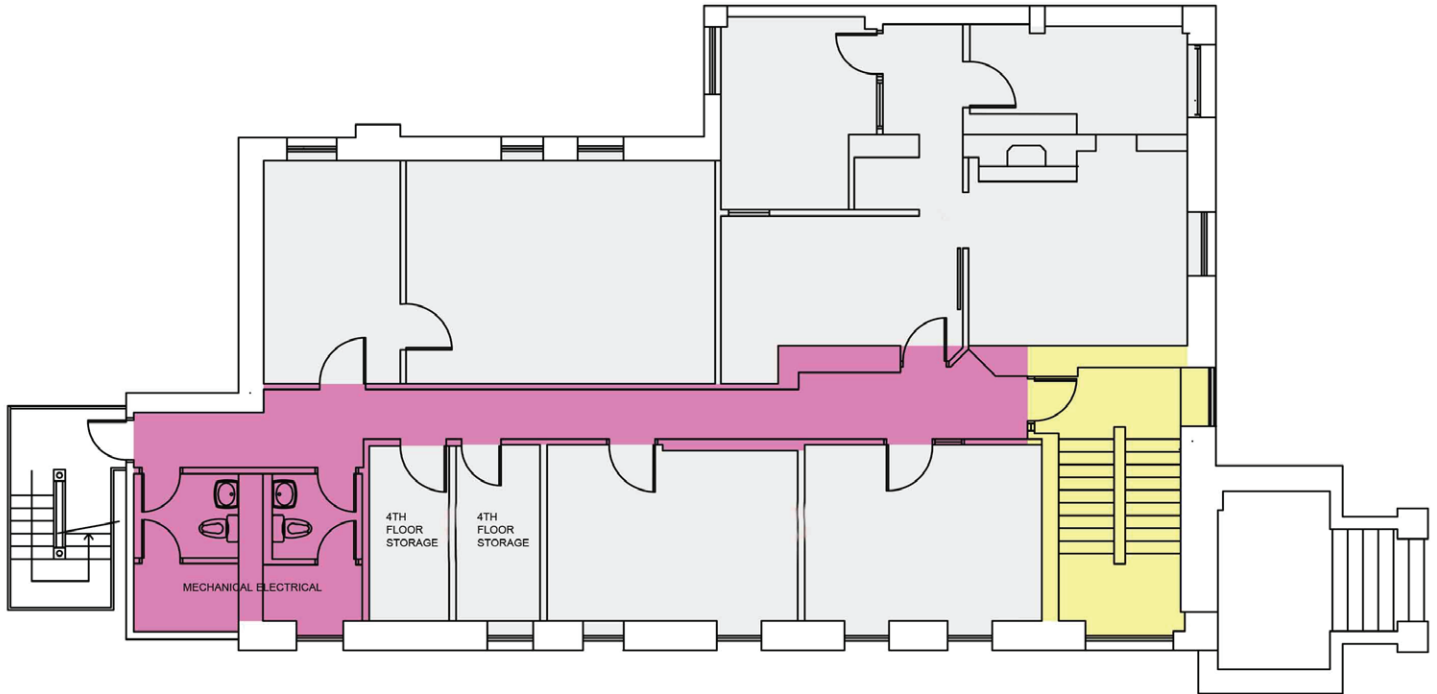
*Area Available for Lease: 2,709 sq. ft.



FLOOR PLAN

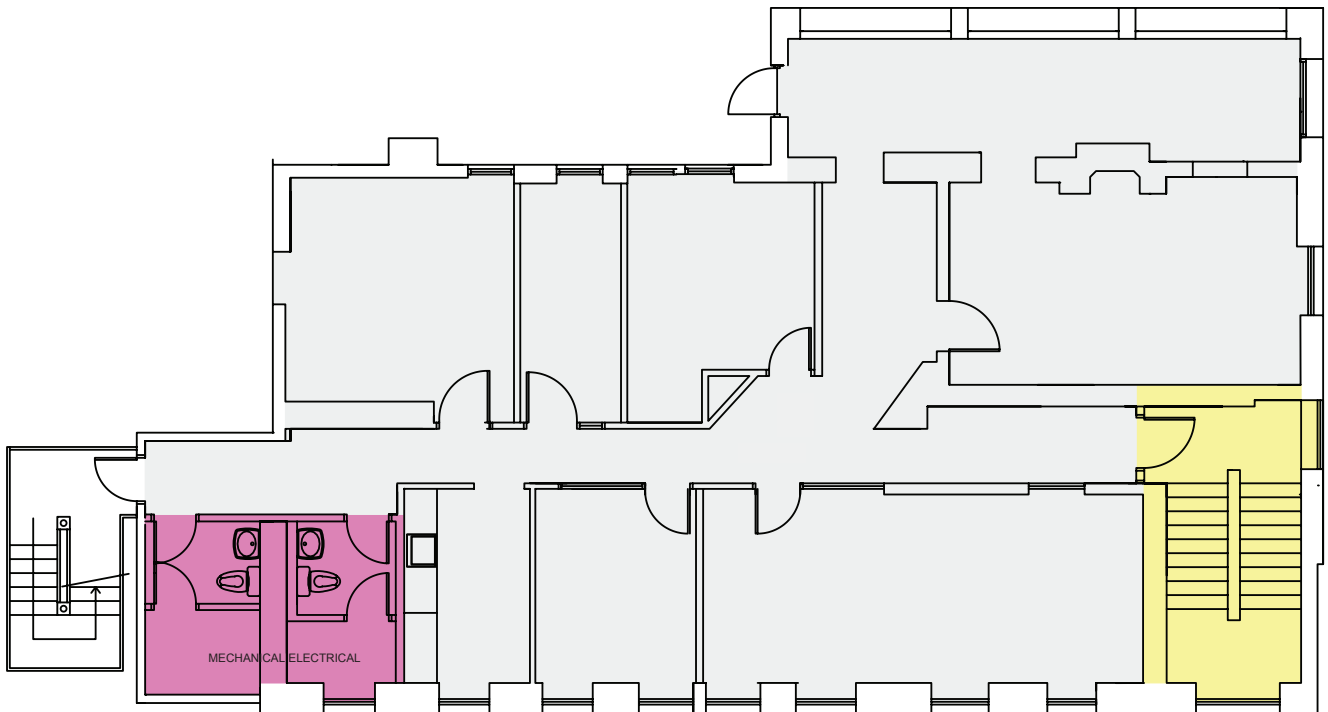
SECOND FLOOR

**Fully Leased*



THIRD FLOOR

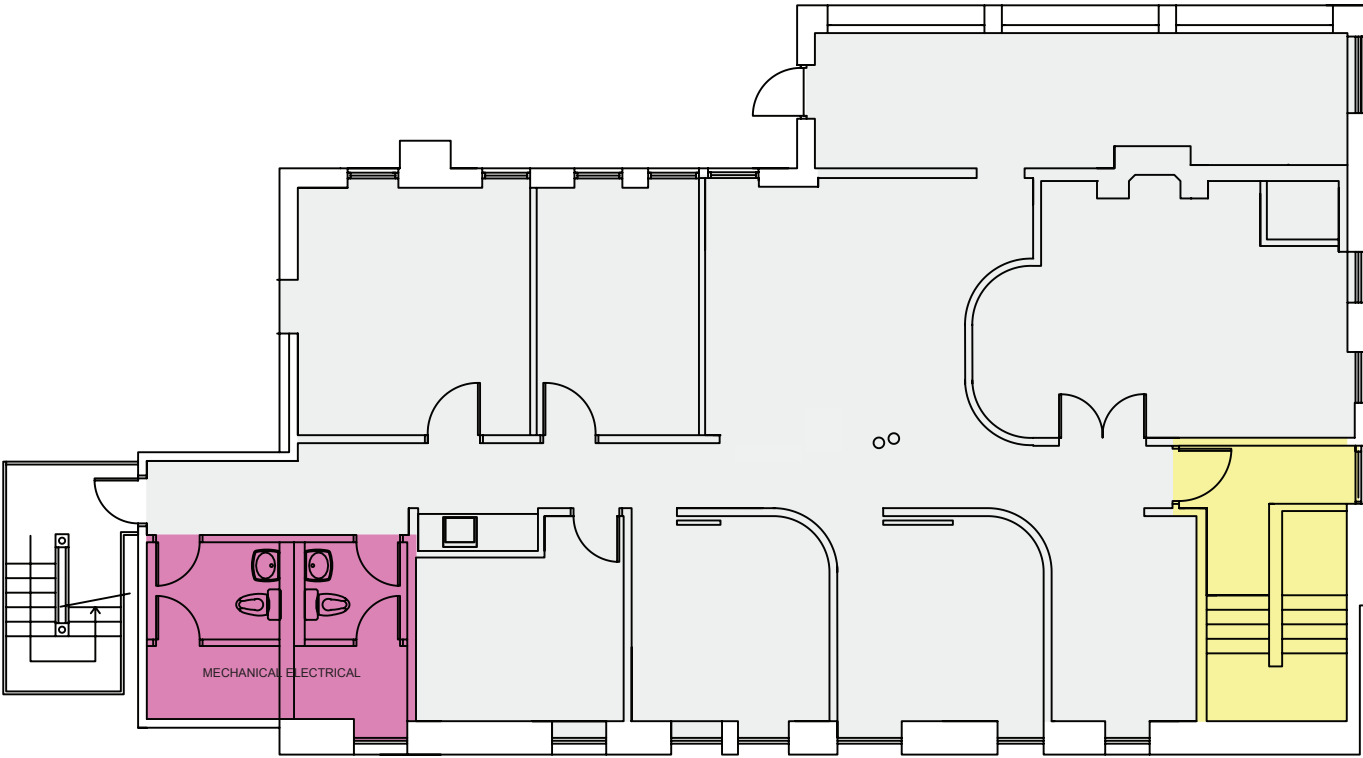
**Fully Leased*



FLOOR PLAN

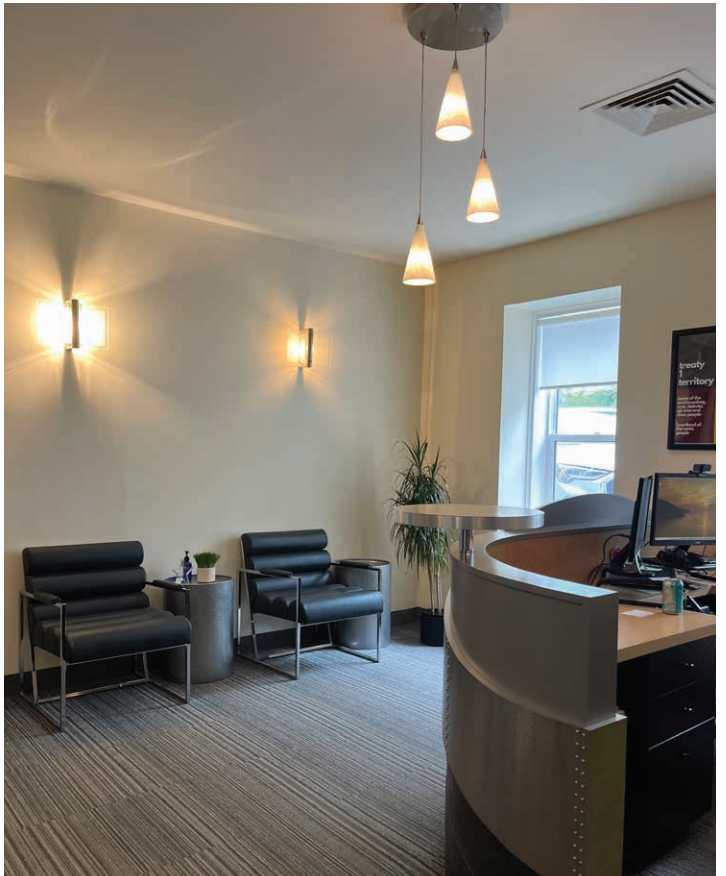
FOURTH FLOOR

*Fully Leased



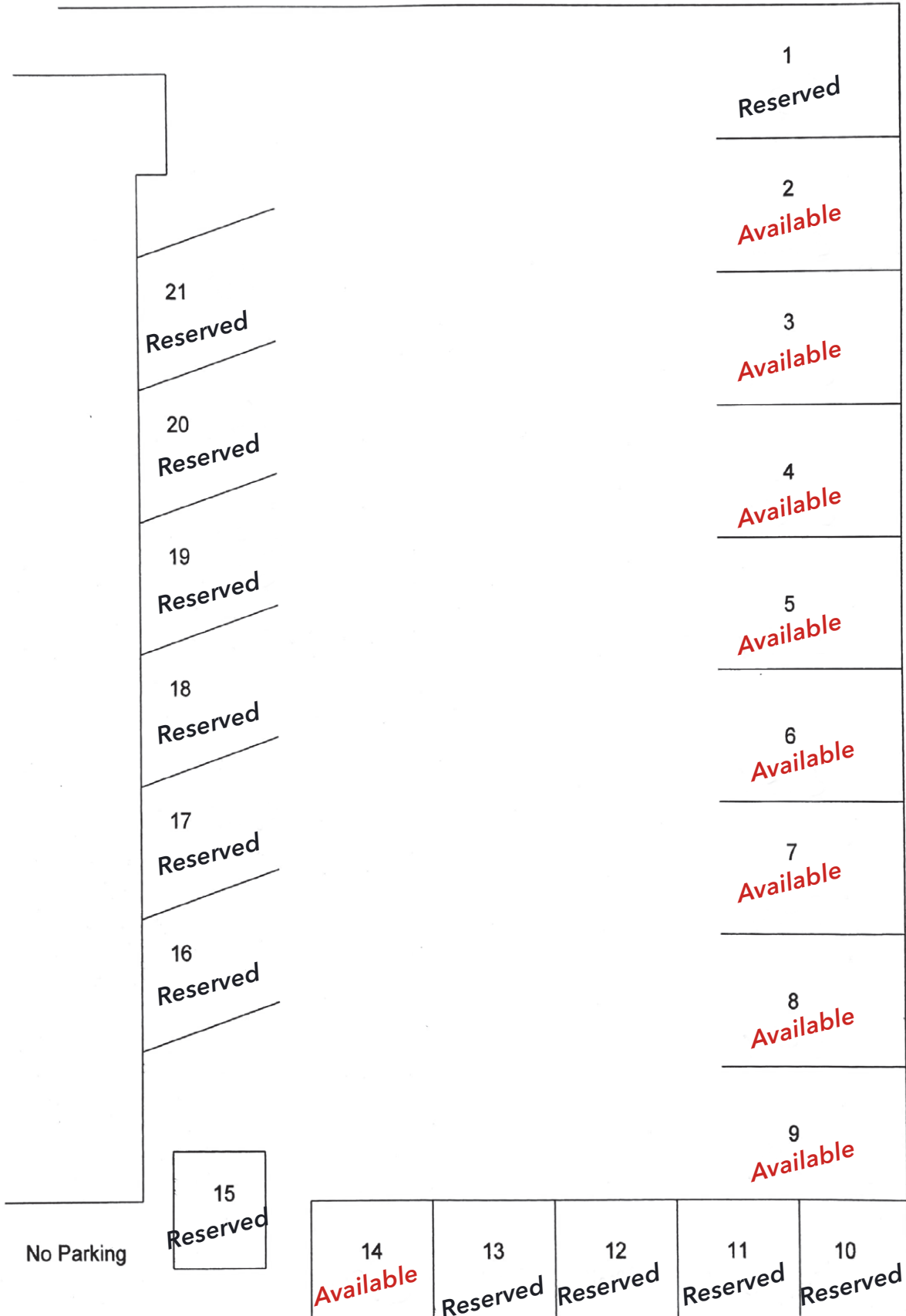
PHOTOS

FIRST FLOOR

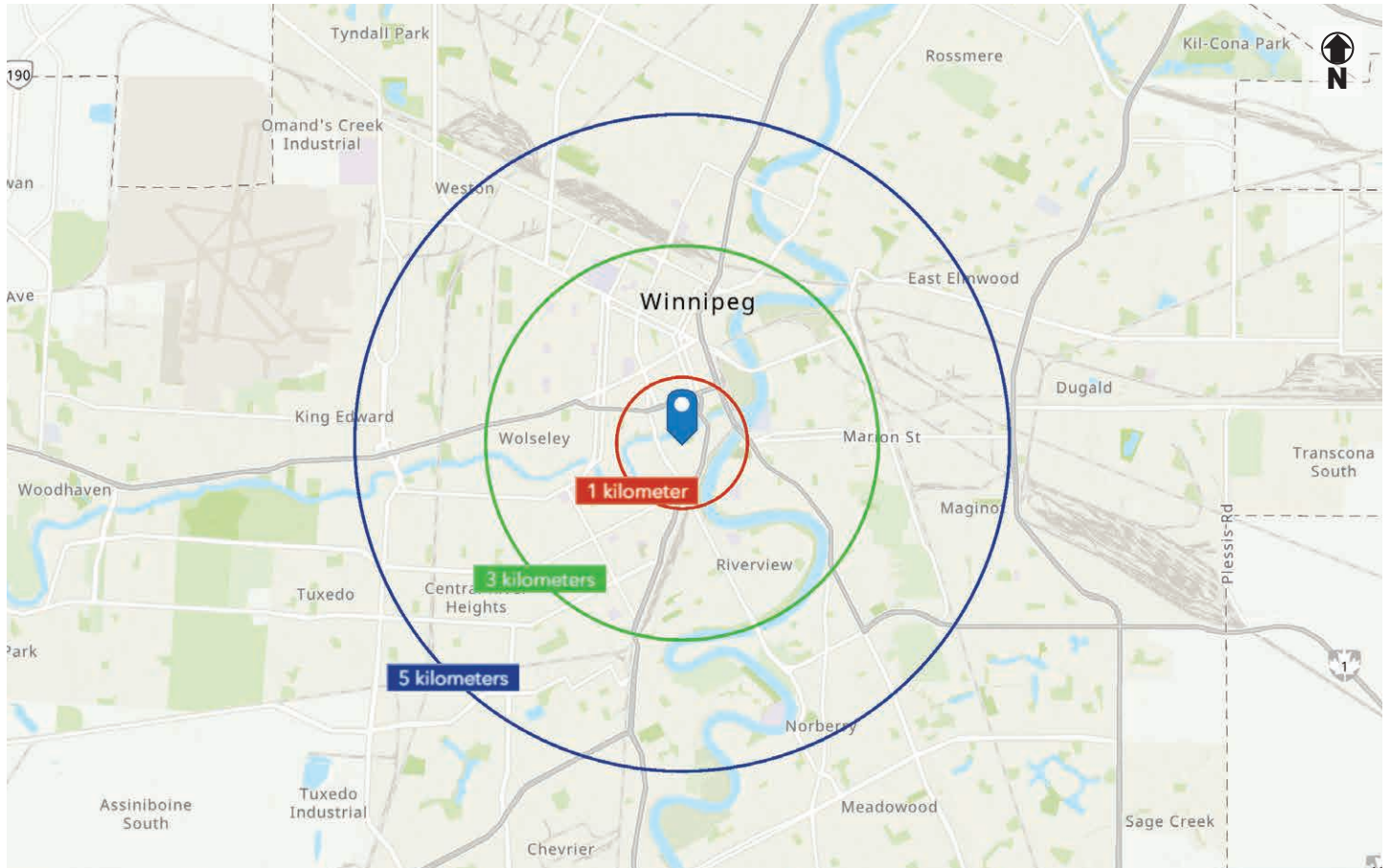


PARKING PLAN

Roslyn Road



DEMOGRAPHIC ANALYSIS



POPULATION

1 km

24,840

3 km

128,563

5 km

247,853

Projected (2030)

26,969

134,673

257,034



HOUSEHOLD INCOME

1 km

\$70,931

3 km

\$86,273

5 km

\$93,186

Projected (2030)

\$82,964

\$99,611

\$107,757



HOUSEHOLDS

1 km

14,713

3 km

60,658

5 km

108,618



MEDIAN AGE

1 km

34.5

3 km

36.4

5 km

37.1

Contact

PRESLEY BORDIAN, Vice President, Sales & Leasing

(204) 985-1356

presley.bordian@capitalgrp.ca

RENNIE ZEGALSKI, Principal

(204) 985-1368

rennie.zegalski@capitalgrp.ca

Services provided by Rennie Zegalski Personal Real Estate Corporation

CAPITAL COMMERCIAL REAL ESTATE SERVICES INC.

300-570 Portage Avenue, Winnipeg, MB R3C 0G4 | T (204) 943-5700 | F (204) 956-2783 | capitalgrp.ca

Disclaimer: Capital Commercial Real Estate Services Inc. ("Capital") does not accept or assume any responsibility or liability, direct or consequential, for the information set out herein, including, without limitation, any projections, images, opinions, assumptions and estimates obtained from third parties. This information has not been verified by Capital, and Capital does not guarantee the accuracy, correctness and completeness of this information. The recipient of this information should take such steps as the recipient may deem necessary to verify the information in this document prior to placing any reliance upon it. The information may change and any property described in this document may be withdrawn from the market at any time without notice or obligation to the recipient from Capital.