

**FOR SALE OR LEASE**

# 1,295 SF Office/ Warehouse with Yard

**241 NE 32ND COURT**

Oakland Park, FL 33334

**PRESENTED BY:**

**STEVE DAVIS**

C: 954.650.7824  
steve@svncr.com

**KEITH KIDWELL, SIOR,  
CCIM**

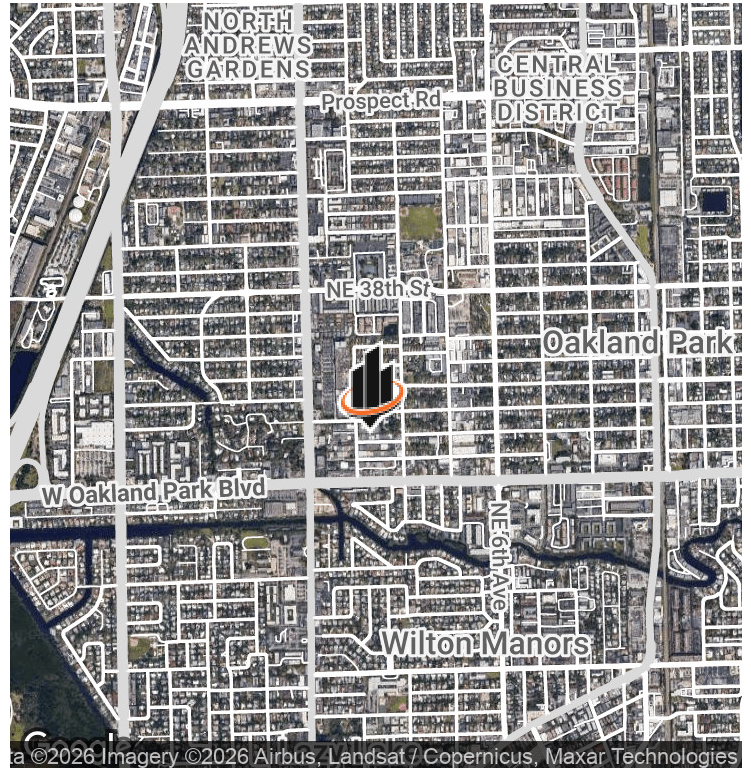
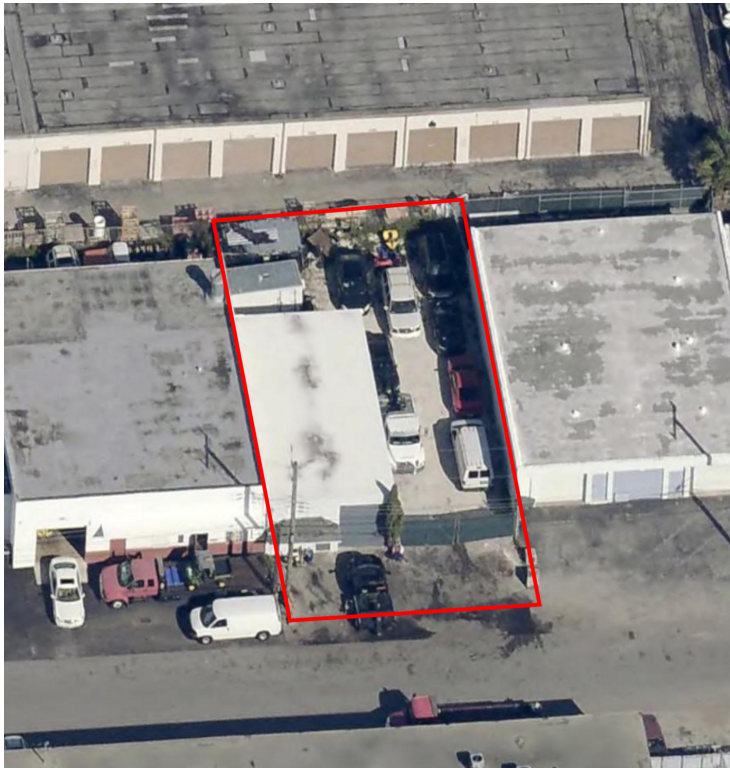
C: 954.234.8777  
keith@svncr.com

**LES BYRON, SIOR, CCIM**

C: 954.401.4713  
les@svncr.com



# PROPERTY SUMMARY



## OFFERING SUMMARY

<b>SALE PRICE:</b>	\$750,000
<b>LEASE RATE:</b>	Inquire
<b>BUILDING SIZE:</b>	1,295 SF
<b>LOT SIZE:</b>	4,858 SF
<b>YEAR BUILT:</b>	1967
<b>ZONING:</b>	I-1
<b>APN:</b>	49-42-22-20-0710

## PROPERTY OVERVIEW

For sale or lease 1,295 SF freestanding office/warehouse building with yard. Ideal location for all types of service companies and light manufacturers. Easy access to I-95.

## PROPERTY HIGHLIGHTS

- Two (2) Grade Level Overhead Doors (12' H & 8' H)
- 10' x12' High Front Door
- 12' Clear Concrete Roof
- Drive Thru Bay to Yard
- Fully Fenced & Gated
- New LED Lighting Throughout
- Mini Split AC in Office
- Epoxy Floors in Office
- Storage Loft Above Office
- Possible Man Cave
- Immediate Occupancy
- I-1 Zoning, City of Oakland Park

**STEVE DAVIS**  
C: 954.650.7824  
steve@svncr.com

**KEITH KIDWELL, SIOR, CCIM**  
C: 954.234.8777  
keith@svncr.com

**LES BYRON, SIOR, CCIM**  
C: 954.401.4713  
les@svncr.com

## ADDITIONAL PHOTOS



**STEVE DAVIS**  
C: 954.650.7824  
steve@svncr.com

**KEITH KIDWELL, SIOR, CCIM**  
C: 954.234.8777  
keith@svncr.com

**LES BYRON, SIOR, CCIM**  
C: 954.401.4713  
les@svncr.com