

QSW THREE FORTY ONE

Flagship Retail for Lease
341 Queen Street West, Toronto



CBRE urban retail team

THREE FORTY ONE QSW

Property Highlights

Unparalleled double-height frontage for maximum brand exposure on Queen West

Incredible adjacencies including Aritzia, MEC, Arc'teryx, Lululemon, Reigning Champ, Shoppers Drug Mart, Aldo, Adidas, Timbuk2, LCBO, Knix and many more

Unbeatable downtown location, steps to the Entertainment District and Financial Core, as well as easy access to the TTC (Osgoode Station/501 Queen Streetcar)

GROUND LEVEL
5,628 SF

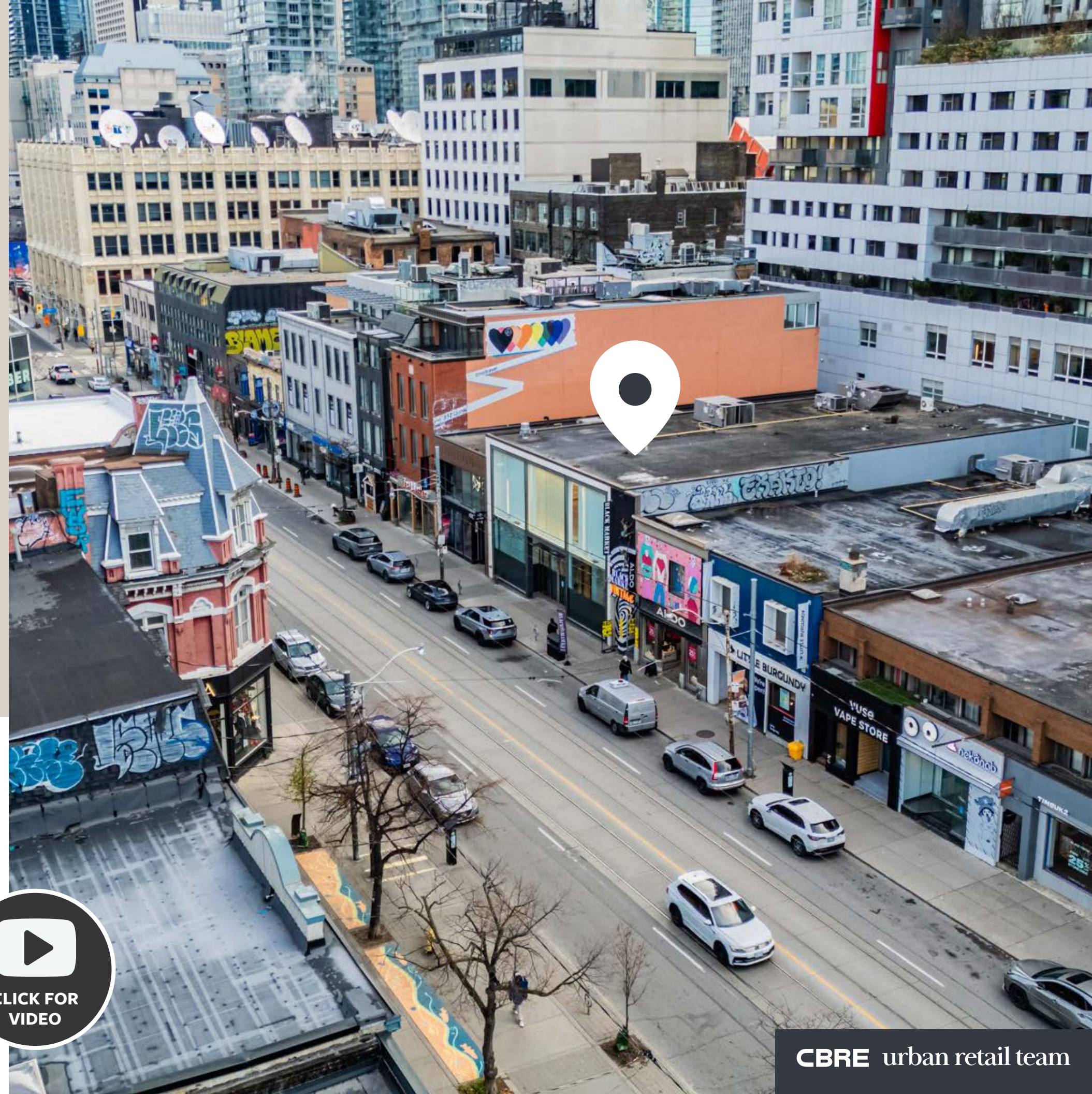
SECOND LEVEL
5,640 SF

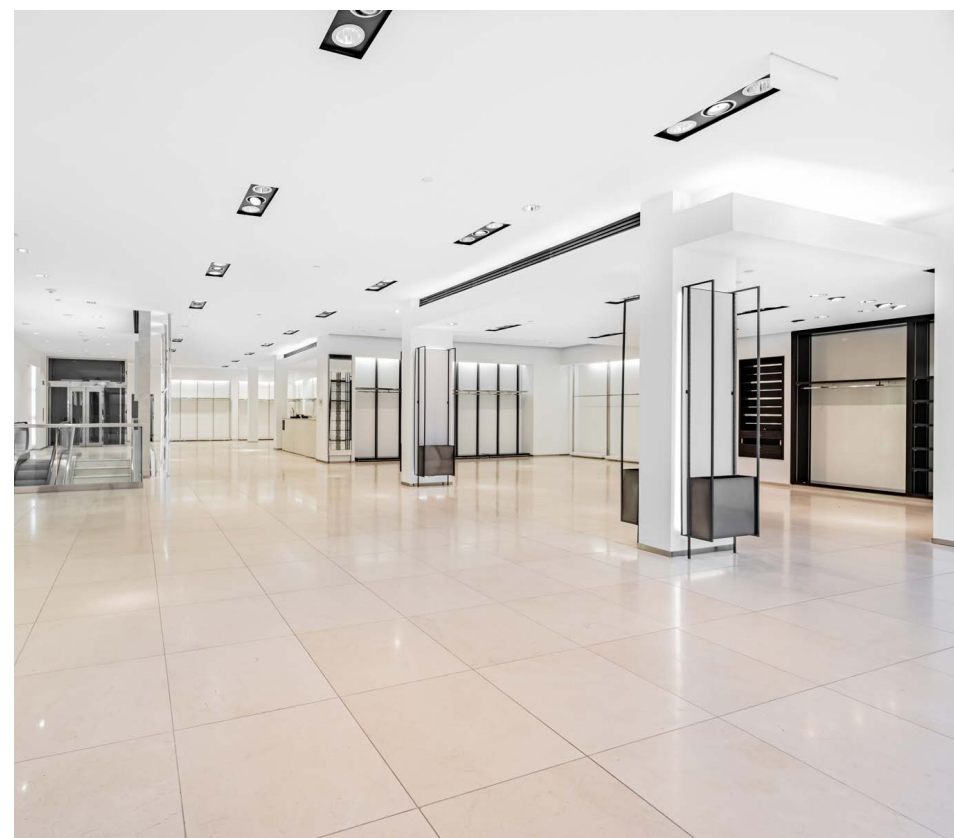
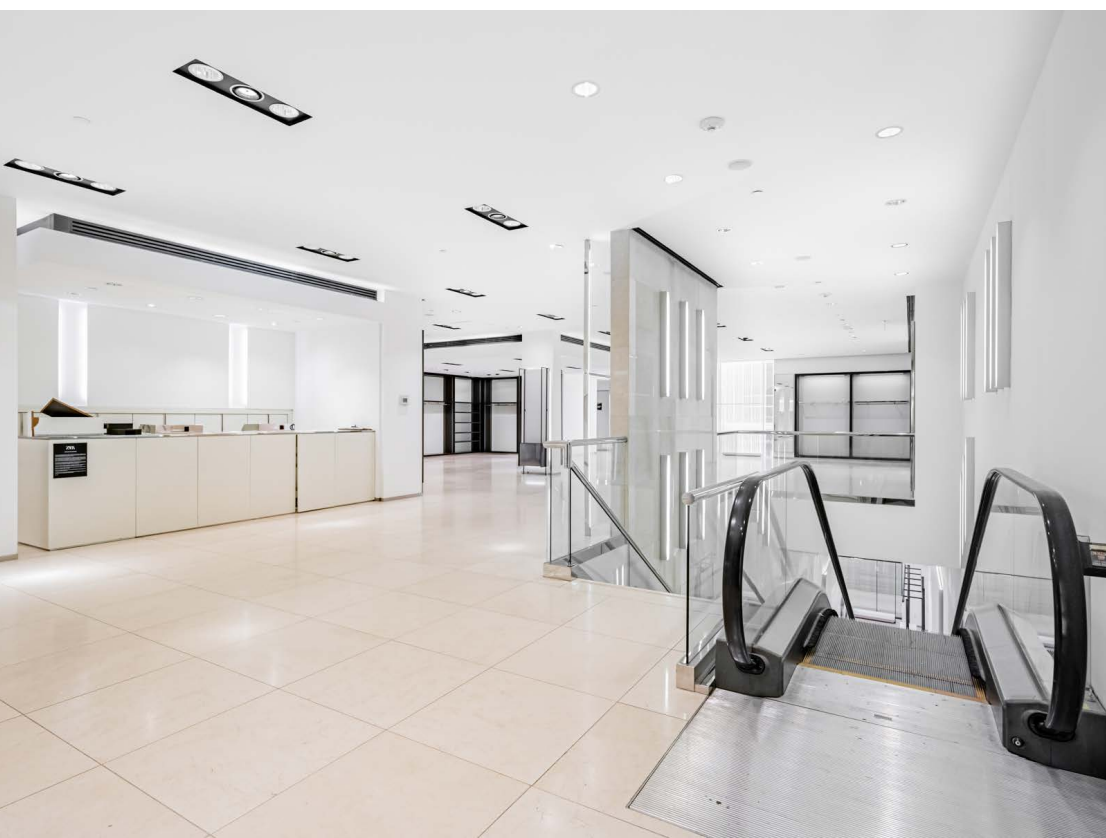
BASEMENT
3,096 SF

NET RENT
Please contact us

TMI
TBD

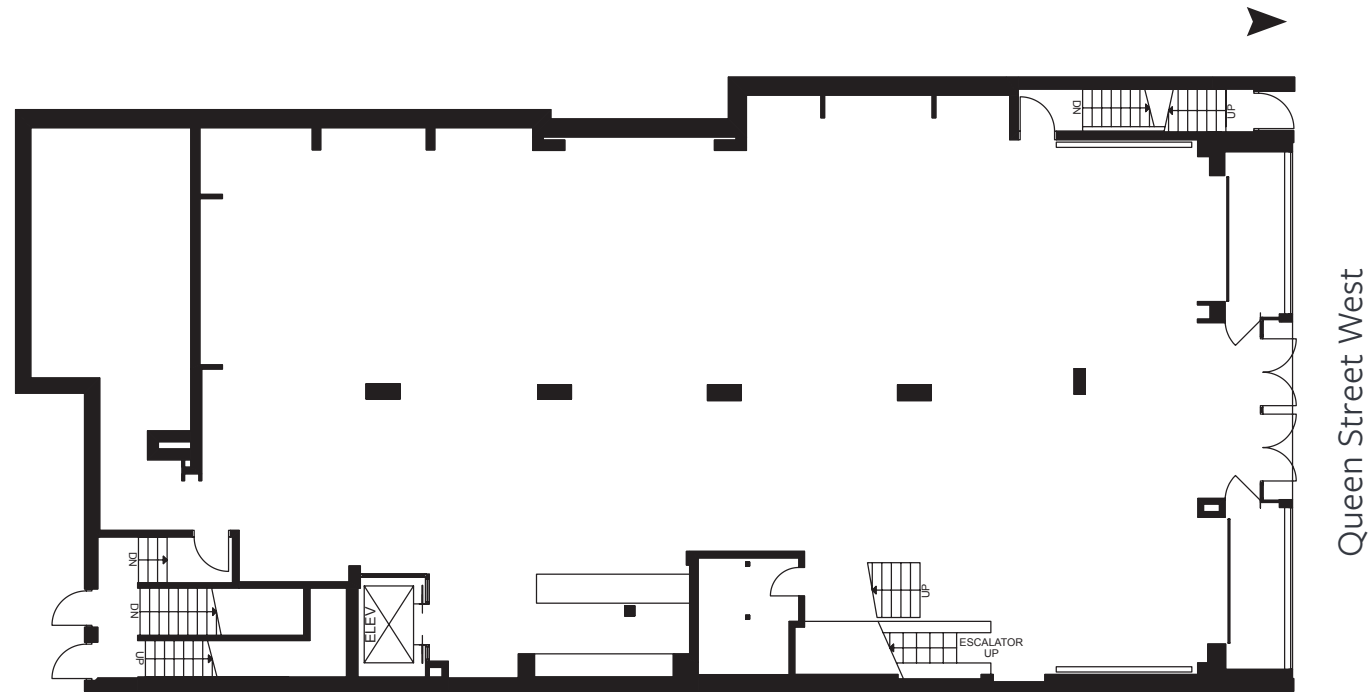
AVAILABLE
Immediately



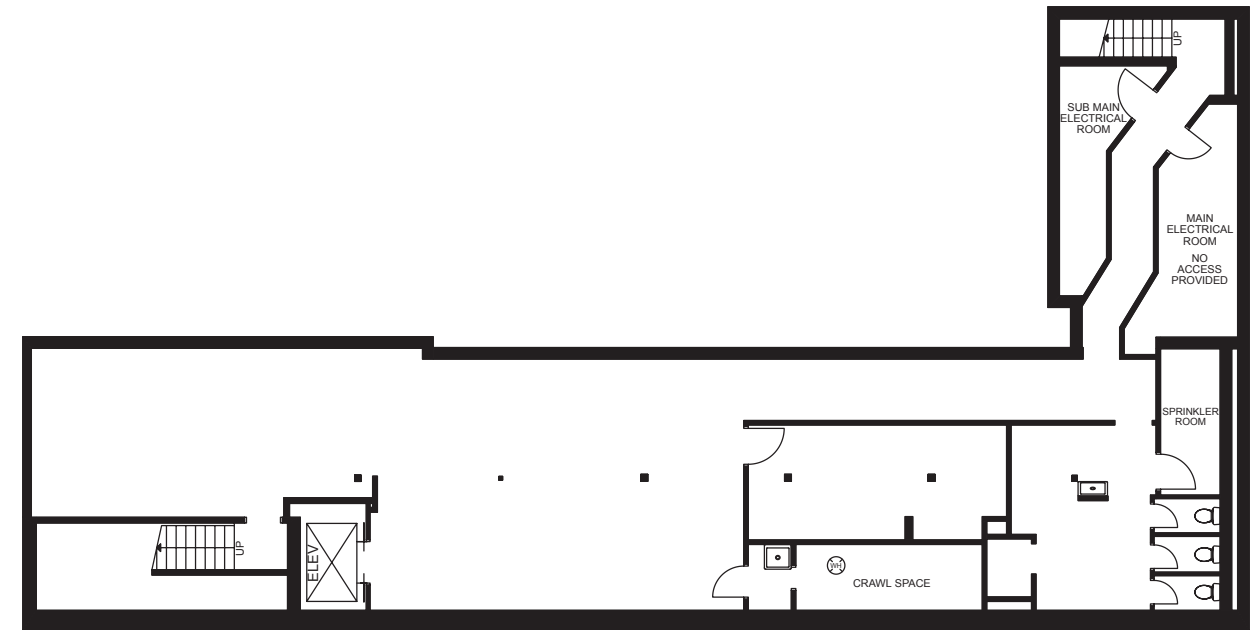


Floor Plans

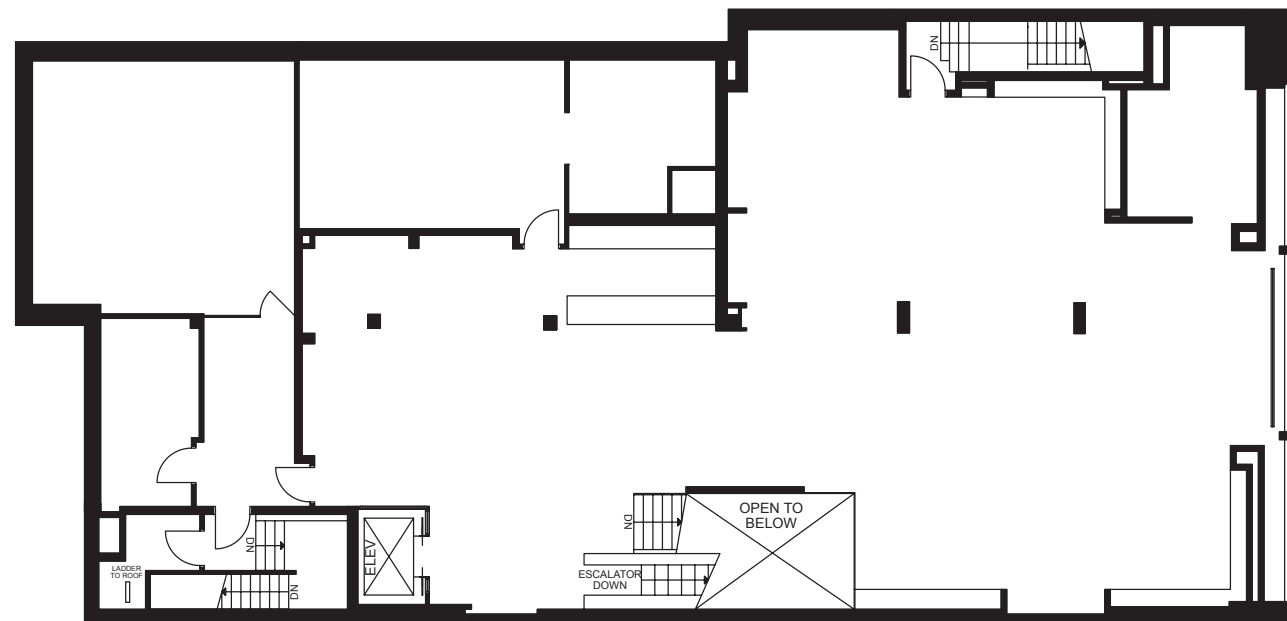
Ground - 5,628 sq. ft.



Basment - 3,096 sq. ft.



Second - 5,640 sq. ft.





THREE FORTY ONE
QSW

The Location

341 Queen Street West is located in the heart of one of Canada's most prominent retail hubs, Queen Street West.

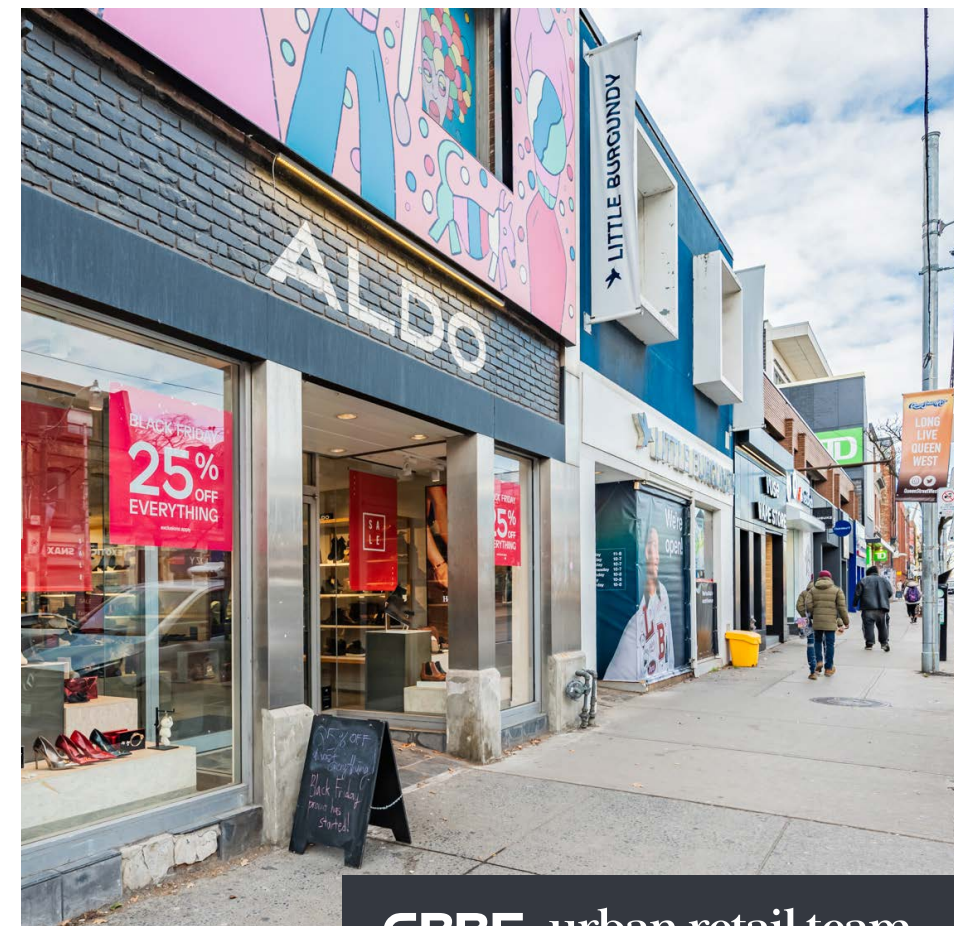
Queen West is known for its mix of trendy fashion boutiques and premium international brands including Club Monaco, Aritzia, Reigning Champ, Lululemon, MAC, Fjällräven and many more.

Queen West's central location in Downtown Toronto, along with the significant residential/employment growth in the immediate area, allows the node to continue its ability to attract premium retail brands, restaurants and bars creating significant pedestrian traffic seven days a week.



**CLICK FOR
VIDEO**

Queen Street West





Advisory Team

ARLIN MARKOWITZ*

Executive Vice President
416 815 2374
arlin.markowitz@cbre.com

ALEX EDMISON*

Senior Vice President
416 874 7266
alex.edmison@cbre.com

JACKSON TURNER**

Senior Vice President
416 815 2394
jackson.turner@cbre.com

TEDDY TAGGART*

Vice President
416 847 3254
teddy.taggart@cbre.com

EMILY EVERETT*

Sales Associate
647 943 4185
emily.everett@cbre.com

*Sales Representative **Broker

CBRE

This disclaimer shall apply to CBRE Limited, Real Estate Brokerage, and to all other divisions of the Corporation; to include all employees and independent contractors ("CBRE"). The information set out herein, including, without limitation, any projections, images, opinions, assumptions and estimates obtained from third parties (the "Information") has not been verified by CBRE, and CBRE does not represent, warrant or guarantee the accuracy, correctness and completeness of the Information. CBRE does not accept or assume any responsibility or liability, direct or consequential, for the Information or the recipient's reliance upon the Information. The recipient of the Information should take such steps as the recipient may deem necessary to verify the Information prior to placing any reliance upon the Information. The Information may change and any property described in the Information may be withdrawn from the market at any time without notice or obligation to the recipient from CBRE. CBRE and the CBRE logo are the service marks of CBRE Limited and/or its affiliated or related companies in other countries. All other marks displayed on this document are the property of their respective owners. All Rights Reserved.