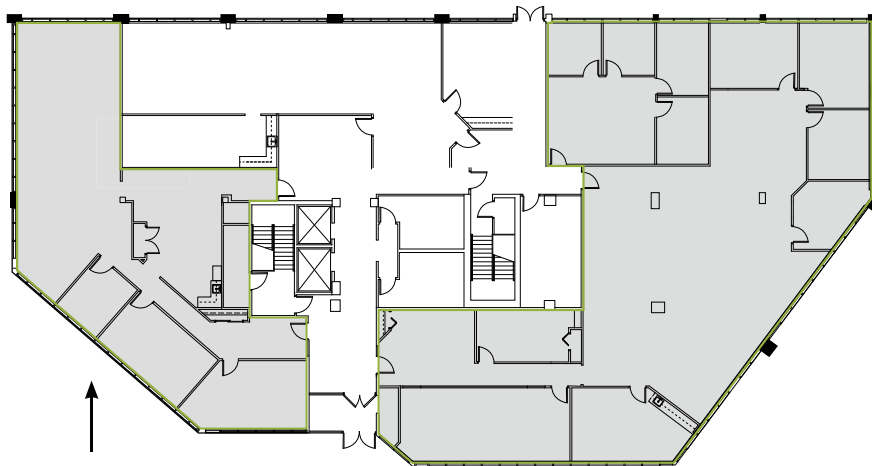


# Fort Washington Collection

BROOKWOOD PHILADELPHIA PORTFOLIO

220 COMMERCE DRIVE  
Fort Washington, PA 19034



↑  
**SUITE 101**  
2,535 RSF

↑  
**SUITE 105**  
5,310 RSF

## BUILDING HIGHLIGHTS

- Building Size: 46,838 s.f.
- Current Availability: 1,342 s.f. to 6,685 s.f.
- Parking Ratio: 4.44/1,000
- Institutional quality ownership
- Renovated lobbies, common areas and restrooms
- Highly Accessible via PA Turnpike, Route 309 and SEPTA Regional Rail
- Surrounded by numerous amenities including Lifetime Fitness, Hilton Garden Inn, Dunkin and Wawa
- New roof

## FOR LEASING INFORMATION

### Adam Shute

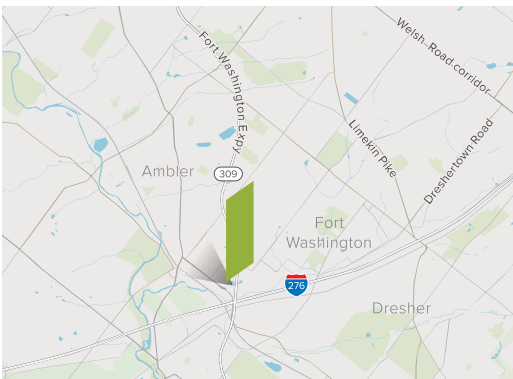
Executive Vice President  
+1 610 249 2272  
adam.shute@jll.com

### Patrick Grenko

Executive Vice President  
+1 215 399 1831  
patrick.grenko@jll.com

### Jones Lang LaSalle Brokerage, Inc.

550 E. Swedesford Road, Suite 260  
Wayne, PA 19087  
+1 610 249 2255



Although information has been obtained from sources deemed reliable, JLL does not make any guarantees, warranties or representations, express or implied, as to the completeness or accuracy as to the information contained herein. Any projections, opinions, assumptions or estimates used are for example only. There may be differences between projected and actual results, and those differences may be material. JLL does not accept any liability for any loss or damage suffered by any party resulting from reliance on this information. If the recipient of this information has signed a confidentiality agreement with JLL regarding this matter, this information is subject to the terms of that agreement. ©2026 Jones Lang LaSalle Brokerage, Inc. All rights reserved.

