



40,000 SF Retail for Lease at the corner of Red Hill and Warner Avenues in Orange County



# Three Distinct *Retail Zones*

## The Street Shops

- Located at the main entry to The Row facing Redhill.
- Designed for daily-use retail, cafes, and customer-friendly storefronts with short-term parking and outdoor dining connections.



## The Plaza Shops

- A prominent open-air structure blending garden spaces with storefronts.
- Offers a more integrated indoor/outdoor feel, encouraging lingering and community activation.



## The Garden Shops

- Sits at the corner of Warner and Redhill with pedestrian access and outdoor seating.
- Adjacent to gathering areas like a beer garden and landscaped spaces to enhance leisure experiences.

## Building A

### Available Spaces

**Suite D** - 1,746 SF

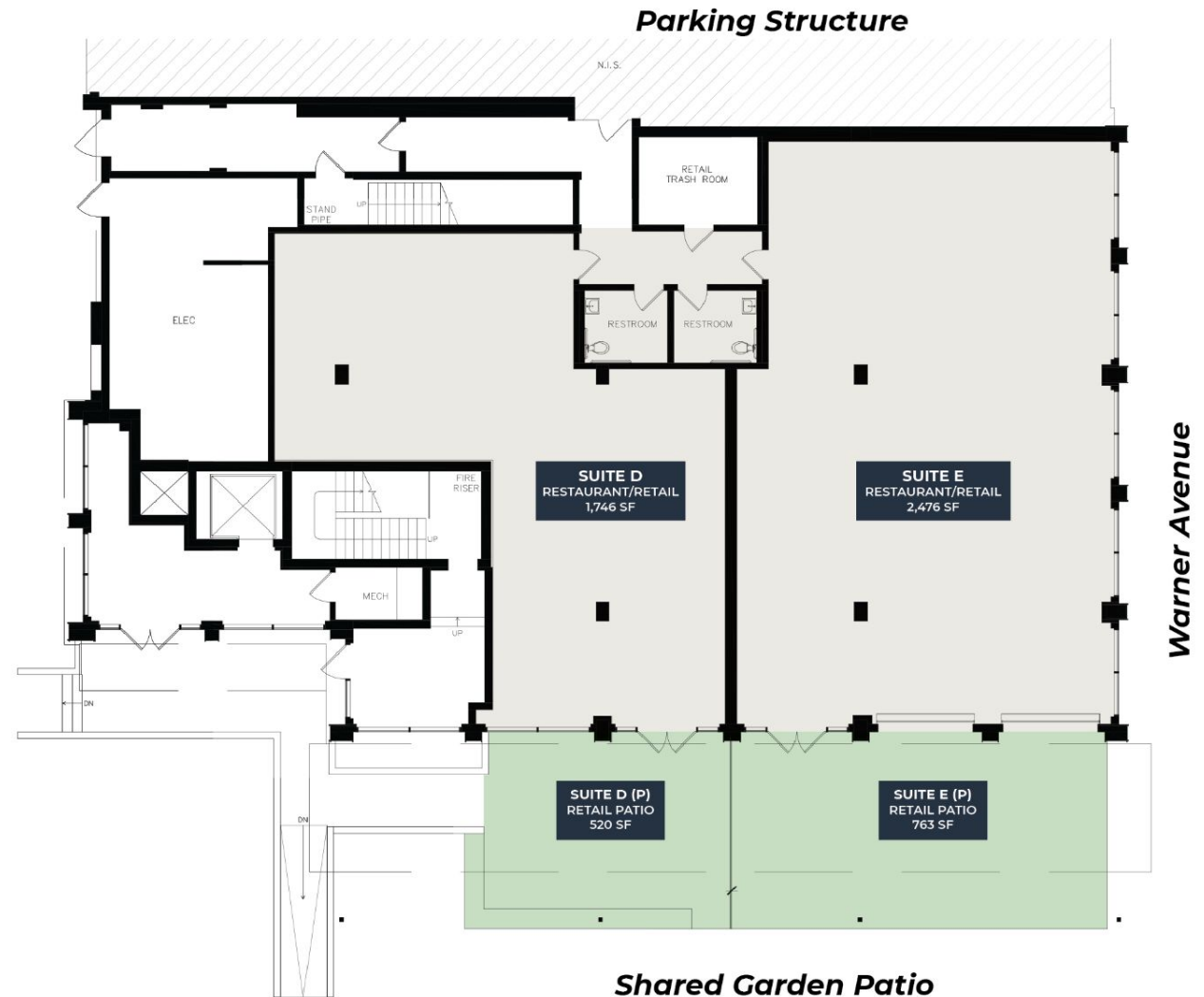
Suite D Patio - 520 SF

**Suite E** - 2,476 SF

Suite E Patio - 763 SF

### Parking

*Building A features direct access to a connected parking structure with dedicated retail guest parking.*



## Building B

### Available Spaces

**Suite A** - 5,623 SF

Patio 1 - 976 SF

Patio 2 - 585 SF

**Suite B** - 2,425 SF

Patio 1 - 771 SF

Patio 2 - 286 SF

**Suite C** - 3,449 SF

Patio 1 - 1,088 SF

Patio 2 - 585 SF

**Suite D** - 3,247 SF **(Leased)**

Patio - 1,122 SF

**Suite K** - 5,428 SF

Patio 1 - 2,291 SF

Patio 2 - 504 SF



Suites can be combined to allow for flexible sizing 2,400 SF+

## Building C

### Available Spaces

**Suite A** - 2,053 SF

Suite A Patio - 772 SF

**Suite B** - 2,278 SF *(Leased)*

**Suite C** - 2,559 SF

**Suite D** - 2,851 SF *(Leased)*

Suite D Patio - 825 SF

**Suite E** - 1,284 SF

**Suite F** - 1,911 SF

**Suite G** - 1,772 SF

**Suite H** - 1,804 SF

### Parking

*Building C features direct access to a connected parking structure with dedicated retail guest parking.*

